

OVER 50 YEARS OF CONTINUOUS INNOVATION.



Plant 1 - Vasai



Ebco was founded in 1963 as a Tool Room and diversified into mass production of critical components such as Cartridge Links for Ordnance Factories. In 1987, Ebco diversified into furniture hardware and has since become India's leading manufacturer of intelligent home and office furniture fittings.

Today, Ebco's product range spans Office Furniture Fittings, Drawer Slides and Hinges, General Hardware, Joinery Fittings & Screws, Furniture Locks, Retail Display Systems, Window-Door & Glass Hardware, Kitchen Systems & Accessories, Aluminium Profiles & Handles, Bed & Wardrobe Fittings & Accessories, Furniture Lights – LED. Our strengths include a range of core competencies in manufacturing, an ever-widening product range, stringent quality standards, affordable prices and an all-India distribution network.



Plant 3 - Palghar



Palghar Factory

INFRASTRUCTURE

We have a state of the art design and product development department which uses the latest 3D design software and CNC Machining Technology. This enables us to launch many new products every month. Our Tool Room capacities have increased significantly which has reduced product development lead time. Our corporate office is located in India's financial capital, Mumbai; we have three manufacturing plants and multiple warehousing facilities north of Mumbai in the towns of Vasai and Palghar, Maharashtra.

Our plants use state-of-the-art roll forming and sheet metal pressing technology. Our products are engineered to perform and our quality department helps ensure that we consistently achieve this goal. Our Quality Assurance Laboratory at the Vasai manufacturing plant performs rigorous cycle tests, load tests and other checks in accordance with certified international quality norms. Our Window Fittings Plant in Palghar has been expanded to increase production capacity and we have commissioned two new warehouses in Palghar which have significantly increased our storage capacity.



Press Shop – Unit 2



Design & Development Dept



Roll Forming Production Line

PRODUCT RANGE

Our products are organised in to 11 verticals under 3 brands, each of which are unique, comprehensive and satisfy a variety of requirements.

WORKSMART – ERGONOMIC HARDWARE FOR OFFICES

Already a market leader in this category, we continue to offer great products to facilitate better working habits and enhance productivity. Our Office Furniture Fittings segment includes a variety of new Monitor Arms, Smart Lifts – Height Adjustable Desks, Computer Keyboard Stations, CPU Stations, Cable Organisers and other accessories.

EBCO – SIMPLIFYING LIVES

Known for quality with value for money pricing and a wide range, we truly embody the drive to Make in India – we make almost all products under 7 verticals at our plants here in India. Over the past two years, we have significantly widened our range of products with a special focus on the Architectural Hardware and Window Fittings segments. Our newly introduced products include Pole Shelving System, Furniture Locks, Concealed Drawer Slides, Speciality Hinges, Friction Stays, Door Hinges and more.

LIVSMART – INTELLIGENT HARDWARE FOR HOMES

Our Kitchen Systems and Accessories segment includes Drawer Systems and Accessories, Corner Solutions, Overhead Systems, Midway Systems, Waste Bins, Roll Top Shutters and more. With a special focus on strengthening our Bedroom Furniture Fittings segment we have widened our range of products which includes Wardrobe Sliding Systems and Accessories, Pro Lift & Electric Bed Fittings and related products.

Our strengths in these segments include our broad product range, best-in-segment quality standards, cutting edge features and fair pricing.



Rain Water Harvesting Tank Below Front Lawn – Unit 1 Vasai



Rooftop Solar Panels at Unit 2 Palghar



Ebco Factory Garden

CERTIFICATIONS

Quality products, the protection of our environment and nurturing our people have always been our priorities.

As a company, we are BIFMA Compliant. Our manufacturing plant at Vasai houses our Design and Development department, Tool Room, Press Shop, Hardening, Phosphating and Assembly departments and has been certified in ISO 9001: 2015 – Quality Management System, ISO 14001: 2015 – Environmental Management System, ISO 45001:2018 – Occupational Health and Safety Management System.



ISO 9001: 2015 Quality Management Systems
ISO 14001: 2015 Environmental Management Systems
ISO 45001 : 2018 Occupational Health and Safety Management Systems

BIFMA

Our products are BIFMA compliant.

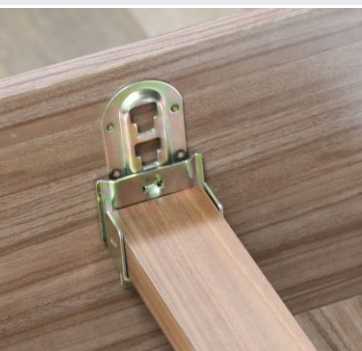
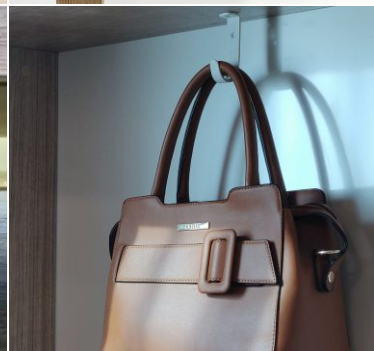
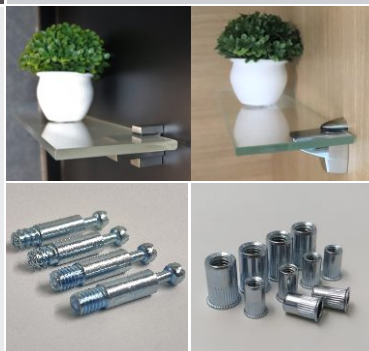


BIS Certification

Bureau of Indian Standards

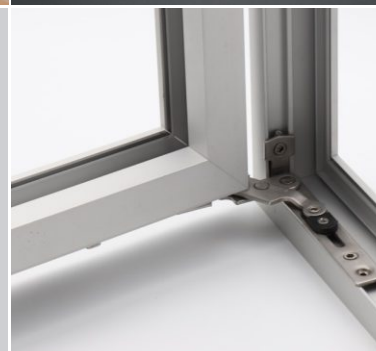


LISTED
R40012



CONTENTS

DRAWER SLIDES & HINGES	8 - 12
GENERAL HARDWARE	13 - 17
JOINERY FITTINGS & SCREWS	18 - 19
FURNITURE LOCKS	20 - 24
RETAIL DISPLAY SYSTEMS	25 - 27
WINDOW, DOOR & GLASS HARDWARE	28 - 38





DRAWER SLIDES AND HINGES

DRAWER SLIDES

01

PREMIUM SLEEK TELESCOPIC SLIDES -
SOFT CLOSE - 45KG



WIDEST RANGE:

- Over 600 variations.
- Load Capacity from 10kg to 125kgs.
- Lengths from 200mm to 900mm.

ADVANCED TECHNOLOGY:

- Available in Regular, Soft-Close & Push-Open.

CYCLE TESTED:

- As per BIFMA & FIRA norms

02

BOTTOM MOUNTING DRAWER SLIDES



03

FULL PANEL WITH 6MM BOTTOM TRACK



04

FULL PANEL QUICK FIT (HT. 54, 86, 125MM)



05

SLEEK TELESCOPIC
DRAWER SLIDES - (I) 30



07

SLEEK TELESCOPIC
DRAWER SLIDE - (I) 35/45



06

SLEEK TELESCOPIC DRAWER
SLIDES - 35KG



08

SLEEK TELESCOPIC
DRAWER SLIDE - (I) 35 -
SOFT CLOSE



09

SLEEK TELESCOPIC DRAWER
SLIDE - (I) 35 - PUSH OPEN



01 - Size (L): 300, 350, 400, 450, 500, 550, 600 mm. Load Capacity: 45kgs Finish: Zinc White. **02** - Size: 300, 350, 400, 450, 500 mm. Load Capacity: 20kgs Finish: Ivory, Brown & Black. **03** - Size (H): 54mm & 86mm (L): 350-500mm. Size (H): 125mm (L): 350, 400, 450, 500mm. Size (H): 150mm (L): 350-500mm. Load Capacity: 25kgs. Finish: Ivory **04** - Size (H): 54, 86, 125mm (D): 400mm (W): 400, 450mm Load Capacity: 25 kgs Finish: Ivory. **05** - Size 250, 300, 350mm. Finish: Zinc White Size 400, 450, 500mm. Finish: Zinc White/Zinc Black Load Capacity: 30kgs. **06** - Size (L): 350, 400, 450, 500, Load capacity : 35 Kgs. Finish: Zinc White/Zinc Black. **07** - Size For 35 Kgs (L): 200, 250, 300, 350, 400, 450, 500, 550, 600mm. Finish: Zinc White/Zinc Black. Size (L): 750, 900mm. Finish: Zinc White. Size For 45 Kgs (L): 250, 300, 350, 400, 450, 500, 550, 600, 750, 900mm. Finish: Zinc White/Zinc Black. **08** - Size (L): 300, 550, 600 mm. Finish: Zinc White. Size (L): 350, 400, 450, 500 mm. Load Capacity: 35kgs. Finish: Zinc White/Zinc Black. **09** - Size (L): 350, 400, 450, 500mm. Load Capacity : 35Kgs. Finish : Zinc White.

10 CONCEALED DRAWER SLIDE (PUSH OPEN)



FEATURES

- Highly stable and uses minimal space below the drawer (27mm clearance).
- Available with fascia bracket for wooden drawers and without fascia bracket for undermount kitchen baskets.
- Flexible 3D adjustment allow fascia brackets to adjusted in 3 directions.

CONCEALED DRAWER SLIDE (SOFT CLOSE)



- Size (L) : Push Open : 350, 400, 450, 500mm
Soft Close : 300, 350, 400, 450, 500, 550, 600mm
For Kitchen Baskets (w/o fascia bracket) : 500mm
- For Undermount Kitchen Baskets : 450mm
- Load Capacity : 35Kgs
- Finish : Zinc White

CONCEALED DRAWER SLIDE 2 (PARTIAL EXTENSION)



Size (L) : 285,335,385,435,485mm
Load Capacity - 20 Kgs

11 SLEEK TELESCOPIC DRAWER SLIDES - 35KGS (SS304)



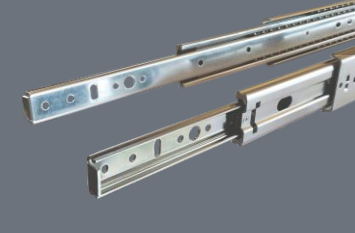
12 SLEEK TELESCOPIC DRAWER SLIDES - 35KGS (SS304) SOFT CLOSE



13 STEEL FURNITURE DRAWER SLIDES (35KG)



14 HEAVY DUTY DRAWER SLIDES 90KGS



15 HEAVY DUTY DRAWER SLIDES 125 (125/90KGS)



16 COMPUTER KEYBOARD SLIDE WITH FULL EXTENSION



17 COMPUTER KEYBOARD SLIDE



18 COMPUTER KEYBOARD SLIDE (ECO)SERIES



19 TWO WAY SLIDE



11 - Size (L) : 400, 450, 500mm. Load Capacity: 35kgs. Finish: Stainless Steel.

12 - Size (L): 400, 450, 500mm. Load Capacity: 35kgs. Finish: Stainless Steel

13 - Size (L): 400, 450, 500, 550mm. Load Capacity: 35kgs. Finish: Zinc White.

14 - Size (L): 450, 500, 600, 750, 900 mm. Load Capacity: 90kgs. Finish: Zinc White.

15 - Size For 125kg. (L) 450,500,550,600,750,900mm. For 90kg. (L) 1050,1200mm.. Finish: Zinc White.

16 - Size (L): 250mm. Load Capacity: 12kgs. Finish: Black.

17 - Size (L): 350. Load Capacity: 35kgs. Finish: Zinc White/Zinc Black.

18 - Size (L): 350 mm. Load Capacity: 12kgs. Finish: Zinc White/Zinc Black.

19 - Size (L): 200, 300, 375mm. Load Capacity: 12kgs. Finish: Zinc White/ Zinc Black.



DRAWER SLIDES AND HINGES

HINGES

SPECIALITY HINGES

01 E SOFT LINEAR HINGE – 3D



02 125° HINGE - SOFT CLOSE



03 155° HINGE - ZERO PROTRUSION (SOFT CLOSE)



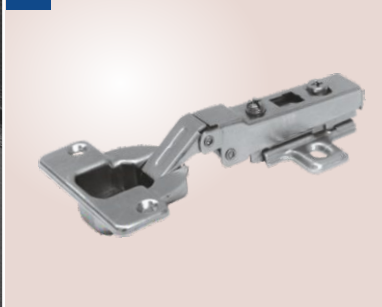
04 THICK DOOR HINGE 15-35MM SOFT CLOSE / 05 THICK DOOR HINGE 15-35MM (WITH 3D MOUNTING PLATE)



06 THICK DOOR HINGE - SOFT CLOSE



07 THICK DOOR HINGE



08 MINI HINGE



09 FOLDING DOOR HINGE / FOLDING DOOR HINGE (I)



10 BLIND CORNER HINGE 3D-SC



11 BLIND CORNER HINGE - EURO



01 - Max Opening: 105°. Shutter Size: 35" x 24" (900mm x 600mm) for 2 hinges. Shutter Thickness: 14 to 22mm. Shutter Cavity: Ø35mm, 11.4mm deep. Finish: Nickel plated & Titanium. **02** - Max opening: 125°. Shutter size: 34" x 22" (850 mm x 550 mm) for 2 hinges. Shutter Thickness: 16 to 19mm. Shutter cavity: Ø35mm, 13mm deep, cavity 4mm from edge. Finish: Nickel plated. **03** - Max Opening: 155°. Shutter Cavity: Ø35mm, 11.5mm deep. Shutter Thickness: 14 to 24 mm. Cabinet Side panel Thickness: 17-21 mm. **04** - Shutter Cavity: Ø35mm. Max Opening: 95°. Shutter Thickness: 15 to 35mm. Available with 3D mounting plate. **05** - Shutter Cavity: Ø35mm. Max Opening: 95°. Shutter Thickness: 15 to 35mm. Available with 3D mounting plate. **06** - Max Opening: 95°. Shutter Size: 34" x 22" (850mm x 550mm). Shutter Thickness: 18 to 30mm. Shutter Cavity: Ø40mm, 14mm deep, 4mm from edge. **07** - Max Opening: 100°. Shutter Size: 34" x 22" (850mm x 550mm). Shutter Thickness: 18 to 30mm. Shutter Cavity: Ø40mm, 14mm deep, 4mm from edge. **08** - Max Opening: 100°. Shutter Size: 24" x 18" (600mm x 450mm). Shutter Thickness: 12 to 18mm. Shutter Cavity: Ø26mm, 10mm deep, 4mm from edge. **09** - Ø35mm. Max Opening: 180°. Shutter Thickness: 15 to 23mm / Hinge (I): 16 to 26mm. **10** - Ø35mm. Max Opening: 90°. Shutter Thickness: 16 to 19mm **11** - Max Opening: 105°. Shutter Size: 34" x 22" (850mm x 550mm). Shutter Thickness: 16 to 19mm.

12 BLIND CORNER HINGE - SOFT CLOSE



17 GLASS DOOR HINGE - Ø 26



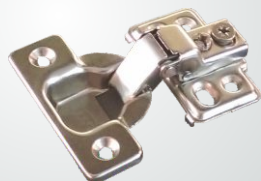
HINGE DRILLING TEMPLATE



23 PIVOT HINGE SS (INSET)



13 SHORT ARM HINGE WITH 4 HOLE MOUNTING PLATE



18 GLASS DOOR HINGE (SOFT CLOSE) - Ø 35



HINGE FOR ALU. PROFILE 3D - OVERLAY / HALF OVERLAY



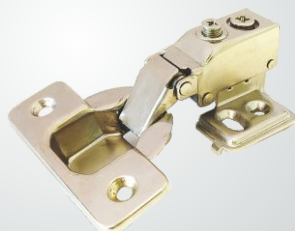
Finish:
Nickel Plated / Titanium



24 PIVOT GLASS HINGE - 8mm



14 SHORT ARM HINGE WITH 4 HOLE MOUNTING PLATE - SOFT CLOSE



19 GLASS HINGE - INSET



22 PIVOT HINGE WITH SPRING (FOR STEEL FURNITURE)



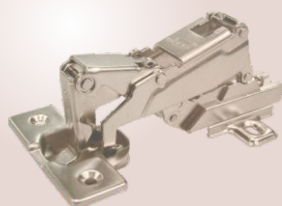
25 RECESSED HINGE SOFT CLOSE - L/R



15 270° HINGE



20 165° HINGE (I)



16 45° CROSS CORNER HINGE - EURO



21 INLINE HINGE



12 - Max Opening: 100°. Shutter Size: 34" x 22" (850mm x 550mm). Shutter Thickness: 16 to 19 mm. **13** - Shutter Cavity: Ø35mm. Max Opening: 100°. Shutter Thickness: 16 to 19mm. **14** - Max Opening: 100°. Shutter Size: 34" x 22" (850mm x 550mm) for 2 hinges. Shutter Thickness: 16 to 19mm. Shutter Cavity: Ø35mm, 12mm deep, 4mm from edge. **15** - Max. opening : 270°. Shutter size: 34" x 22" (850mm x 550mm) for 2 hinges. Shutter cavity : Ø35mm, 12mm deep. Shutter Thickness: 16 to 19mm. **16** - Max Opening: 105°. Shutter Size: 34" x 22" (850mm x 550mm). Shutter Thickness: 16 to 19 mm. **17** - Max. opening : 100°. Shutter size : 600mm x 350mm for 2 hinges. Shutter Thickness: 4 to 6mm. Shutter Cavity: Ø26mm, 4mm from edge. **18** - Max. opening : 105°. Max Shutter size : 600mm x 400mm for 2 hinges. Shutter Thickness: 4 to 6mm. Shutter cavity : Ø35mm, 4mm from edge. **19** - Max Shutter Size: 800mm x 350mm. Glass Shutter Thickness : 4 to 6mm. • Built in catch for flush fitting glass shutters. **20** - Max Opening: 165°. Shutter Size: 85" x 24" (2135mm x 600mm). Shutter Thickness: 16 to 26 mm. Shutter Cavity: Ø35mm, 12mm deep, 4mm from edge. **21** - • Ideal for folding shutters. Finish: Black. **22** - • Ideal for steel cabinet. • Spring loaded latch mechanism for long lasting use. **23** - Max Load: 2.6 Kgs/set. Finish: SS 304. **24** - Glass Thickness: 6 to 10 mm. Min. Ply Thickness: 18 mm. **25** - Finish: Titanium.



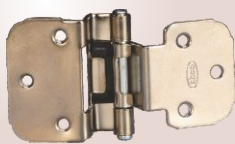
DRAWER SLIDES AND HINGES

HINGES

26 CABINET HINGE



27 SPRING LOADED HINGE



28 CRANKED HINGE



SOFT CLOSE / PUSH OPEN HINGES

29 EURO SLOW MOTION HINGE - 2 HOLE/ 4 HOLE MOUNTING PLATE



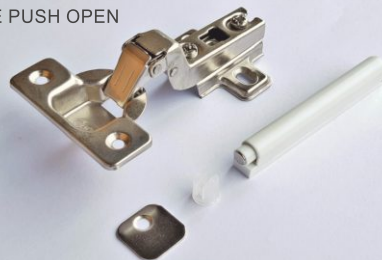
30 HINGE SLOW MOTION - 2 HOLE/ 4 HOLE MOUNTING PLATE



31 HINGE SLOW MOTION - 3D



32 HINGE PUSH OPEN



SS 304 HINGES

33 EURO SLIP ON HINGE SS 304 WITH 4 HOLE MOUNTING PLATE



34 HINGE SLOW MOTION - SS304 WITH 4 HOLE MOUNTING PLATE



35 SHORT ARM HINGE WITH 4 HOLE MOUNTING PLATE - SS304



26 - Max Opening: 180°. Horizontal and Vertical Adjustments provided. Finish: Anthracite, White Mat, Silver. **27** - Max Opening: 180°. Finish: Black, Brown. **28** - Max Opening: 180°. Max Shutter Size: 34" x 22" (850mm x 550mm). Plate Recess Depth : 1.5mm. **29** - Max Opening: 105°. Shutter Size: 34" x 22" (850mm x 550mm). Shutter Thickness: 16 to 19mm. Shutter Cavity: Ø35mm, 12mm deep, 4mm from edge. **30** Ø35mm. Max Shutter Size: 34" x 22" (850mm x 550mm) for 2 hinges. Shutter Thickness: 16 to 19mm. **31** - Max Opening: 105°. Shutter Size: 34" x 22" (850mm x 550mm) for 2 hinges. Shutter Thickness: 16 to 19mm. Shutter Cavity: Ø35mm, 12mm deep, 4mm from edge. **32** - Max. Opening: 105°. Shutter Size: 34" x 22" (850mm x 550mm) for 2 hinges. Shutter Thickness: 16mm to 19mm. Shutter cavity: Ø35mm, 12mm deep, 4mm from edge. **33** - Max Opening: 105°. Shutter Size: 34" x 22" (850mm x 550mm). Shutter Thickness: 16 to 19mm. Shutter Cavity: Ø35mm, 12mm deep, 4mm from edge. **34** - Max. opening: 105°. Shutter size: 34" x 22" (850 mm x 550 mm) for 2 hinges. Shutter thickness: 16 to 19mm. Shutter cavity: Ø35mm, 12mm deep, cavity 4mm from edge. **35** Ø35mm. Max opening: 100°. Shutter Thickness: 16 to 19mm. **36** - Max opening: 105°. Shutter size: 34" x 22" (850mm x 550mm) for 2 hinges. Shutter Thickness: 16mm to 19mm. Shutter cavity: Ø35mm, 12mm deep, 4mm from edge. Available in 4 hole mounting plate/4 hole mounting plate (30mm). **37** - Ø35mm. Max Opening: 105°. Shutter Size: 34" x 22" (850mm x 550mm) for 2 hinges. Shutter Thickness: 16 to 19mm.

PRIMARY SERIES

36 SLIP ON HINGE - EURO / SLIP ON HINGE EURO WITH 4 HOLE MOUNTING PLATE / 4 HOLE (30mm)



37 CLICK ON HINGE (I) / CLICK ON HINGE (I) WITH 4 HOLE MOUNTING PLATE



HINGE ACCESSORIES



DOWEL FOR HINGE - EURO



Ø 35MM COVER CAP



GENERAL HARDWARE



TABLE BRACKETS

- These table brackets are ideal space saving solution for fold away table or shelf where space is limited.
- Suitable for multipurpose applications for home, offices, retail stores, etc.
- Available with special release knob feature that folds when not in use.
- Available in various options - Table Bracket Mini, Recessed, With Damper and more.

01 TABLE BRACKET MINI



02 TABLE BRACKET RECESSED



03 TABLE BRACKET



04 TABLE BRACKET DAMPER



05 TABLE TOP FOR TABLE BRACKET



06 FOLDING TABLE MOUNT



13 PRO LIFT SOFT CLOSE



14 PRO-LIFT / PRO LIFT PROGRESSIVE



15 PRO LIFT HEAVY DUTY



07 FOLDING BRACKET 350 & 450



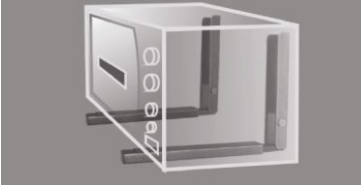
08 FOLDING UTILITY TABLE



09 AC MOUNTING BRACKET



10 MULTI UTILITY FOLDING BRACKET



11 TABLE LIFT - 200 WITH DAMPER



12 TABLE LIFT 300 - WITH DAMPER



01 - Size: 225, 325mm. Max. load: 80kgs. Finish: Brown/ Anthracite / White Matt. **02** - Size: 300, 400, 500mm. Max. Load: 100 kgs. Finish: Anthracite / White Matt. **03** - Size: 300, 400, 500, 600mm. Max. load: 100kgs (300/400/500mm) & 150kgs (600mm). Finish: Anthracite/ Brown/White Matt. **04** - Size: 200, 400mm. Max. Load: 20N & 40N. Finish: Anthracite. **05** - Size (mm): 400(D) x 600 (W) x 18(T) Compatible with Table Bracket TB30; 400(D) x 700(W) x 18(T) Compatible with Table Bracket TB40; 575(D) x 800 (W) x 18(T) Compatible with Table Bracket TB50. Finish: Frosty White/Walnut. **06** - Size: Ø76mm, 154 x 154mm. Finish: Black. **07** - Size: 350x60x22mm, 450x60x22mm. Finish: Anthracite / White Matt / Brown. **08** - Size: 600, 750, 900 & 1200mm. Max. Load: 70 kgs. Finish: Anthracite. **09** - Size: 500mm. Max. Load: 120 kgs. Finish: White Texture. **10** - Size: 340mm - 500mm. Max. Load: 120 kgs. Finish: Black. **11** - Load Capacity: 11 kgs. max. Recommended Table Size: 4 x 2 feet. Lift up by 200mm. Finish: Table Lift 200- Black/Anthracite. Table Lift 200 with Damper - Anthracite. **12** - Load Capacity 11 kgs. max. Recommended Table Size: 4 x 2 feet. Lift up by 300mm. Finish: Table Lift 200- Black/Anthracite. Table Lift 300 with Damper - Anthracite. **13** - Force: 60N, 80N, 100N, 120N, 150N. Finish: Grey. **14** - Finish: Silver. Force: 60N, 80N, 100N, 120N, 150N, 200N & 250N. **15** - Finish: Anthracite. Force: 250N, 300N, 350N.



GENERAL HARDWARE

16 CABINET STAY



PLINTH BASE - ADJUSTABLE

Load Capacity: 500kgs
Finish: Zinc Yellow



23 SOFA BASE

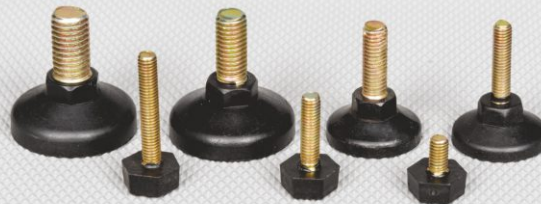


17 CABINET STAY - HEAVY



PLINTH SCREWS

Plinth Screw - BB



Plinth Screw

24 PEDESTAL CASTOR/ PEDESTAL CASTOR RECESSED



18 LID STAY



20 BALL HEAD PLINTH SCREW



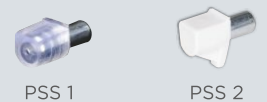
21 BASE PLINTH



CABINET SHELF SUPPORT



PIN SHELF SUPPORT



19 FLAP STAY



FURN FELT



With Pin/Adhesive

PLINTH BUSH



PLINTH BUSH WITH PIN



22 PLINTH PIN



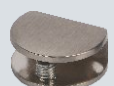
25 ADJUSTABLE GLASS SHELF SUPPORT



GLASS SHELF SUPPORT & GLASS SHELF SUPPORT (SCREW)



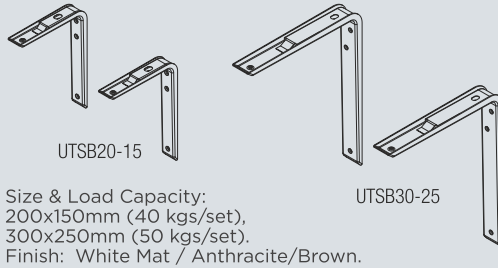
26 GLASS SHELF BRACKET



16 - Max. Load: 2kgs (1 stay), 4.5kgs (2 stays). Finish: Plated. **17** - Max. Load: 6kg (1 stay), 13.3kgs (2 stays). Finish: Nickel Plated. **18** - Finish: SS304. **19** - Size: Regular (180mm) / Large (230mm) / Ex-Large (280mm). Finish: Plated/ Brown. Load: 12kgs. **20** - Load Capacity: 800kgs/ piece. **21** - Load Capacity: BP 616 - 1000kgs / piece, BP 1418 - 1200kgs / piece. **22** - Size: 15(D) x 8(H) x 6mm (nail). Finish: White/Black. **23** - Easy to mount foot base for sofas and cabinets. Size: SB332: 70x70x45mm, SB333: 70x70x75mm, Finish: Brown. SB282: 45x200x45. SB283: 45x200x75. Finish: Chrome Plated. Load Capacity: 500kg/pc. **24** - For PC28: Load Capacity: Static - 500kgs, Dynamic - 300kgs. Set Height: 28mm, For PCR35: Load Capacity: 400kgs, Set Height: 5 & 7mm. Finish: Black. **25** - AGSS1/2 - Size: 6mm - 12mm. Finish: Silver/Nickel Plated Satin. AGSS3 - Size: 5mm - 15mm, AGSS4 - Size: 3mm - 20mm. Finish: Chrome Plated/Nickel Plated Satin. **26** - Size: 8mm, 10mm, 12mm. Finish: Nickel Plated Satin



UTILITY SHELF BRACKET



35 VENTILATION GRILL - RECTANGULAR



Kitchen



Dressing Table

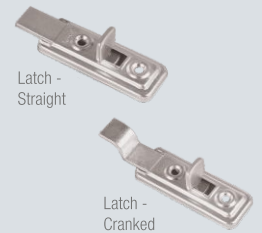


Study Room



Balcony Garden

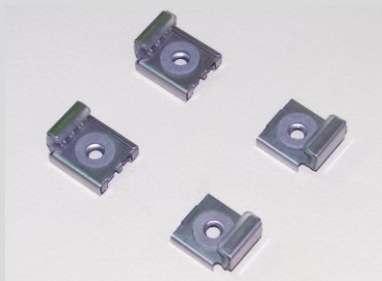
36 CUPBOARD LATCH



27 WALL SHELF ROD - HD



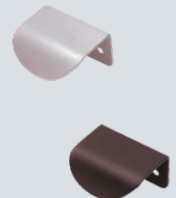
MIRROR HOLDER



33 SPRING CLIP



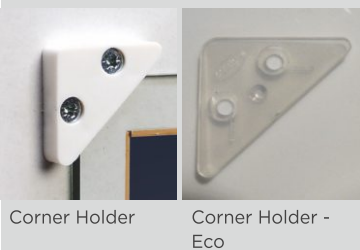
37 TONGUE HANDLE



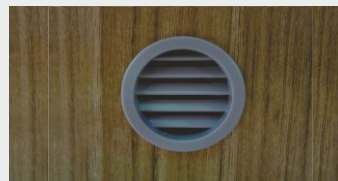
28 WALL SHELF ROD ADJUSTABLE



30 GLASS CORNER HOLDER / GLASS CORNER HOLDER - ECO



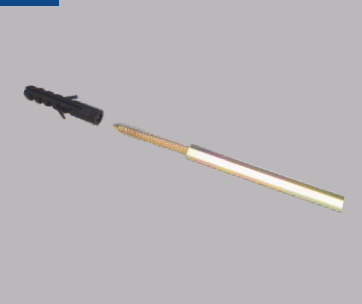
34 VENTILATION GRILL - DIA 40MM



38 GLASS HANDLE



29 WALL SHELF ROD



31 GLASS SIDE HOLDER



32 GLASS CLAMP

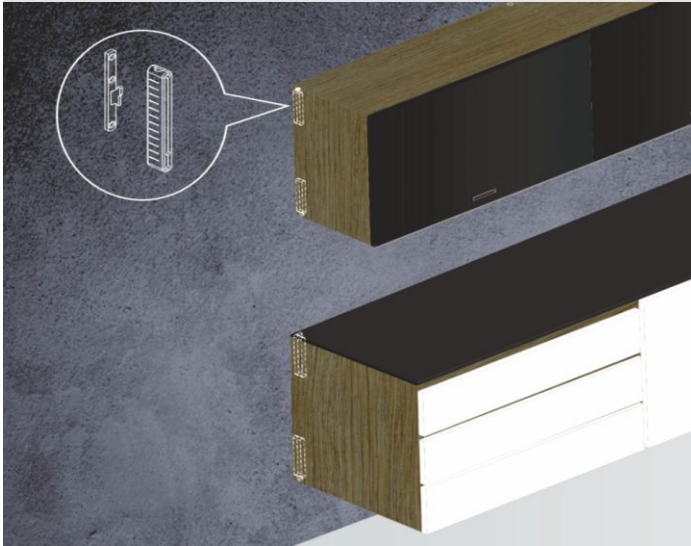


27 - These are heavy duty, plastic cover moulded, built in with plug and with better grip. **Size:** Ø10 x 100, Ø10 x 145, Ø14 x 140. **Finish:** Brown. **28 - Size:** 150, 200, 250mm. **Finish:** Zinc Plated White. **29 - Size:** 100mm, 150mm. **Finish:** Zinc Plated Yellow. **30 - Size:** 4mm. **Finish:** Ivory/Clear. **31 - Size:** 4mm. **Finish:** Ivory/Clear. **32 - Size:** 4mm. **Finish:** Clear. **33 - Max. Shutter Size:** Cupboard: 2000x750mm (80"x30"). **Max. Load Capacity:** 3.5kgs. **Finish:** Zinc Plated White. **34 - Finish:** Black/Grey/White. **35 - Size:** 34 X 168mm. **Finish:** Black/Grey/White. **36 - Size:** 56, 96, 150mm. **Finish:** Zinc Plated Black & White/SS304. **37 - Size:** 50x40mm, 82x40mm. **Finish:** Black/Brown/Silver/White Matt. **38 - Finish:** Chrome Plated. **Glass Shutter Thickness:** 4-6mm



GENERAL HARDWARE

CABINET HANGER CONCEALED



- Heavy duty cabinet hanger.
- Ideal for kitchen cabinets (base unit & wall units)
- Bathroom vanity units & similar applications.
- Size: 141x 21mm.
- Load Capacity: 300kgs/pair.
- Min. Panel Thickness: 18mm.
- Finish: Mocha.
- Slides in for easy storage.



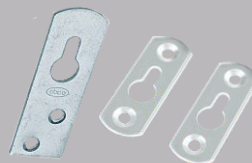
40 HANGER BRACKET



41 HANGER BRACKET - HEAVY DUTY



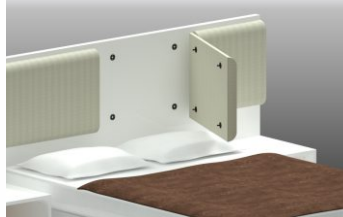
42 HANGER / HANGER PLATE



43 ADJUSTABLE CORNER BRACKET



44 PANEL CATCH



BUMPERS



SAFETY CORNER BUMPER S
SCBS35
Size: 35X35X25mm



SAFETY CORNER BUMPER R
SCBR41
Size: 41X41X15mm



SAFETY DOOR SPACER
SDS 2560
Size: 88X70X22mm



BS1-7



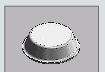
BS1-18



BS1-29



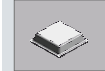
BS1-19



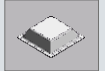
BS2-1



BS2-5



BS2-20



BS2-32



BS2-6



BS2-34

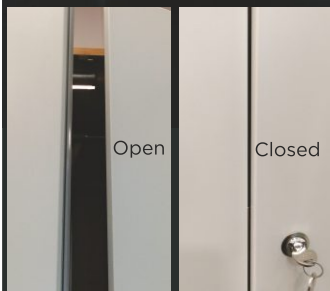
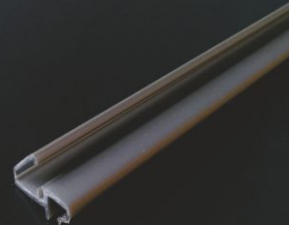


BS2-35



CB-5

45 DOOR SEAL PROFILE



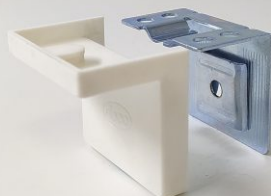
46 SOFA CONNECTORS



39 BAG HOOK

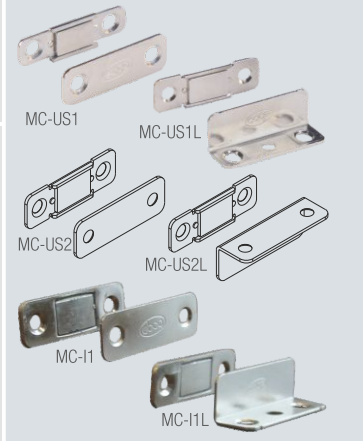
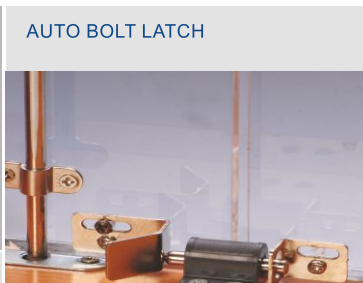
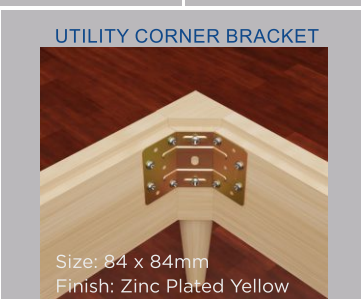
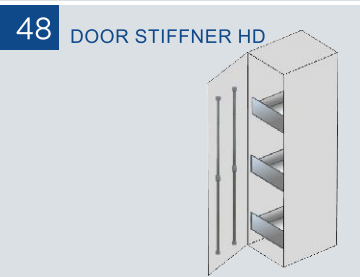


CABINET HANGER BRACKET



Size: 48x43x33mm
Finish: White / Brown

39 - Ideal for hanging bags, helmets etc. beneath the table. Easy to mount under or on the side wall of desk. **Size:** 100x20x3mm. **Finish:** White. **40** - **Size:** Regular/ Mini. **Load Capacity:** 45kgs (Regular), 30kgs (Mini). **Finish:** Black/Anthracite. **41** - **Size:** 60 x 59 x 10mm. **Load Capacity:** 150kgs. **Finish:** Zinc Plated Yellow. **42** - **Size:** For Hanger - 60mm, 80mm, 100mm. **Load Capacity:** 80 kgs/piece. **Size:** For Hanger Plate - 46mm. **Load Capacity:** 80 kgs/piece. **43** - **Load Capacity:** 60 kgs/piece. **Finish:** Plated / White. **44** - Ideal for joining multiple panel installations. **Size:** Ø32 x 25.5mm. **Finish:** Black. **45** - **Finish:** Silver/Anthracite. **46** - **Size:** 76x64x2mm **Load Capacity:** 150kg, **Finish:** Zinc Yellow.



47 - Length: 2000mm (For Door Height 1600-2000mm). **Length:** 2400mm (For Door Height 2000-2400mm). **48** - For Door Height 1000-2700 mm. **49** - Size: 2010mm. **Finish:** Aluminium/Black. **50** - Size: 6mm. **Finish:** Opaline/ Silver. **51** - Finish: White/Brown. **52** - Size: 4" and 6". **Load/Set:** 1200kgs. **Finish:** Zinc Plated Yellow. **53** - Size: 140x64mm. **Finish:** Zinc Plated Yellow. **54** - Size: 38x38x 38mm. **55** - Size: 165x165x 35mm. **Finish:** Black/White Matt/Anthracite. **56** - Size: 100, 150, 200mm. **Load Capacity:** 50 kgs, 75 kgs, 100 kgs. **57** - Stroke: 12mm/ 40mm. **Push Force/Piece:** 3.5kgs (12mm), 3kgs (40mm). **Finish:** Grey / Black. **58** - Stroke: 38mm. **Push Force/Piece:** 2.5kgs. **Finish:** Grey. **59** - Size: Ø8 x 10mm. **Catch Plate provided.** **Pull force:** 750gms. **Finish:** White/Mocha/ Grey. **60** - **Pull force:** MC-US1 - 2.25kgs, MC-US1L - 3.25kgs, MC-US2 - 5kgs, MC-US2L - 5.50kgs, MC-I1 - 2.50kgs, MC-I1L - 2.75kgs.



JOINERY FITTINGS & SCREWS



- Ideal furniture fastener providing high pull-out resistance.
- Manufacture to international specifications and standards.
- Choice of diameters & lengths ensure proper selection for each application.
- Material: C-1022 steel heat treated case hardened or SS304 grade stainless steel.



Pozi Recess CSK Head Chipboard Screw



Pozi Recess CSK Head Screw with Saw-Thread



SS304 Pozi Recess CSK Head Chipboard Screw



Pozi Recess PAN Head Chipboard Screw



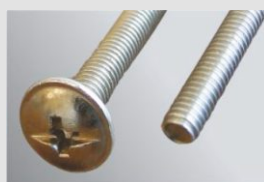
Phil Recess CSK Head Drill Screw



Phil Recess PAN Head Drill Screw



M6 Allen Socket CSK Head Screw

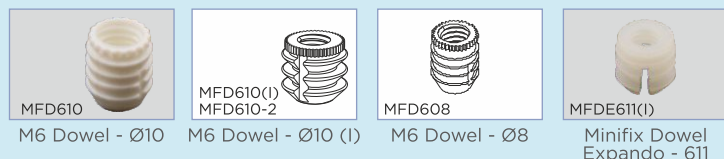
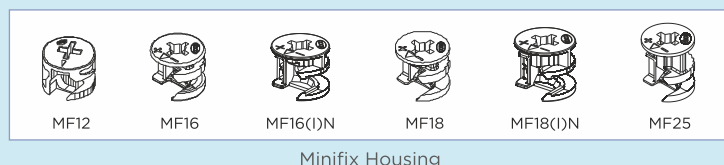
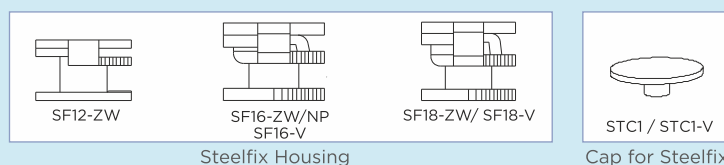


Handle Fitting Screw

STEEL FIX AND MINI FIX



- New Steelfix Housing made out of MS is very strong & usable with existing ebco mini fix screws.



SELF TAPPING SCREWS (FLAT TIP)

Size: 3.5x13mm
Finish: Zinc Plated White

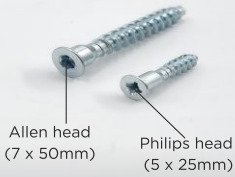


DOWEL FIX



Size: Ø12x9mm
Finish: Zinc Plated White

04 MODULAR FURNITURE SCREW



CAP FOR MODULAR FURNITURE SCREW-7mm ALLEN HEAD



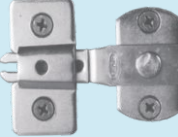
M10 PHILIPS HEAD SCREW & CAP



07 MAXI CONNECTOR



TABLE CONNECTOR



Finish: Zinc Black

11 M4 SLEEVE CONNECTING SCREW



13 DOWELS



MODULAR CLIP



Finish: Zinc Plated White

SHELF CAM



Size: Ø20mm
Finish: Frosty White / Brown

CONCEALED SHELF SUPPORT



Size : Ø 15mm
Finish : Frosty White

PUSH FIX



Finish : Zinc Plated White

01 SELF TAPPING INSERTS



02 RIVET NUTS



WALL PLUG



Size: 10x50mm
Finish: Grey

03 CROSS NUT / BARREL NUT / SLEEVE NUT



05 WALL PLUG 535



06 ANCHOR PLUG WITH SCREW HEX HD/CSK HD



Anchor Plug Hex Head with Twin Thread



Anchor Plug with CSK Head

08 RIGHT ANGLE BRACKET/SS304



09 STRAIGHT BRACKET - SMALL/ BIG



Small



Big

10 RIGHT ANGLE CONNECTOR



RIGHT ANGLE BLOCK



Finish : Ivory

01 - Size: TN-M4x10, M4x20, M6x11, M6x13, M6x16, M6x20, M8x18, TNC-M6x13/M6x16mm. **Finish:** Zinc Plated White/Yellow. **02** - Size: M3x10, M4x10, M5x11.5, M6x14, M8x16.5. **Finish:** Zinc Plated White. **03** - Size: **Cross Nut** - M6x10, M6x12, M8x10, M10x13. **Barrel Nut** - M6x12. **Finish:** Zinc Plated White. **Sleeve Nut** - M6xØ8x11. **Finish:** Nickel Plated. **04** - Size: For Allen Head - 5x50, 7x50, Phillips Head - 5x25, 5x50. **Finish:** Zinc Plated White. **05** - Size: 5x35, 6x30. **Finish:** White/Grey. **06** - For Hex Head: Size: M10x80/100/120/140/ 160mm. For CSK Head: Size: M10x80/100/120/140/160mm & M8 x 60/80/100mm **Finish:** Ebco Blue. **07** - Size: 65, 100, 150mm. **Finish:** Zinc Plated White. **08** - Sizes: 20x20, 40x40, 60x60, 80x80, 20x40, 50x25, 80x26. For SS304: 20x20, 40x40mm. **09** - Sizes: Small-30x50, Big-30x70. **Finish:** Zinc Plated White. **10** - Sizes: 20x20, 40x40, 25x35. **Finish:** Zinc Plated White & White Matt. **11** - Sizes: 21/29/33/41/47mm **Finish:** Nickel Plated. **12** - Sizes: Ø5x20/25/30/35/40mm. **Finish:** Nickel Plated. **13** - Sizes: Ø6x20/25/30/35 & Ø8x30/35/40mm. **Finish:** Wooden.



FURNITURE LOCKS

PREMIUM SERIES



Special Features of Premium Locks

MASTER KEY SYSTEM:

Each batch of locks can have master key which can open every different lock from the same batch.

CORE REMOVAL SYSTEM:

Also known as 'Service Key' The core can be removed from a lock and is interchangeable with any type of locks from the premium series.

SET LOCKS:

Has a possibility of providing set locks (several locks with same key no.) in same or different type of locks from the premium series.

FOLDING KEY



- Unique Wave key technology.
- Thicker than any furniture lock key, reduces chances of key breaking.
- Easy serviceability.

FLIP KEY



- Patented Design.
- Double Wave Key System.
- Complete folding.
- Flip to open & use.

5000 COMBINATIONS



PREMIUM LOCKS WITH "ACTIVE PIN SYSTEM"

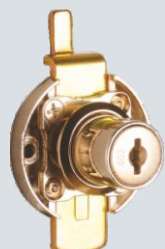


The Active Pin elevates the level of security to another level. It works instantaneously on unauthorised insertion of a different numbered key.

01 MULTI PURPOSE LOCK - ROUND



Straight



Cranked

02 SQUARE LOCK



Straight



Extended Bolt

03 FRONT MULTI DRAWER LOCK



Wooden Drawer

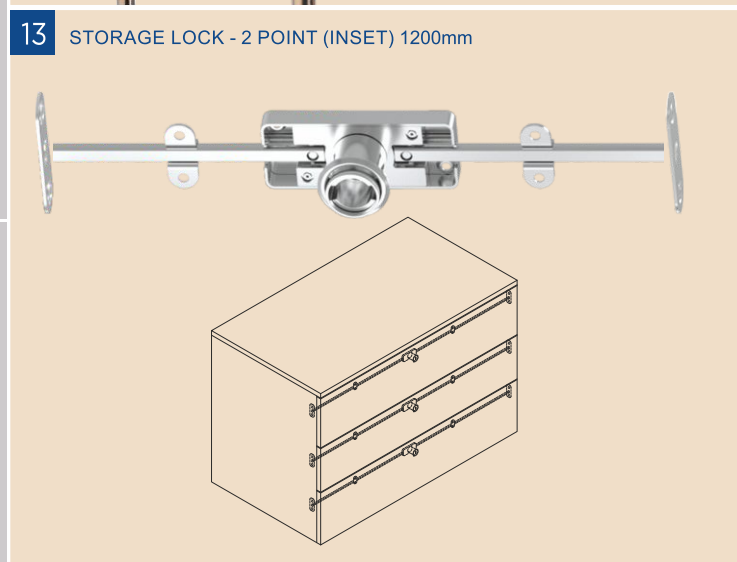
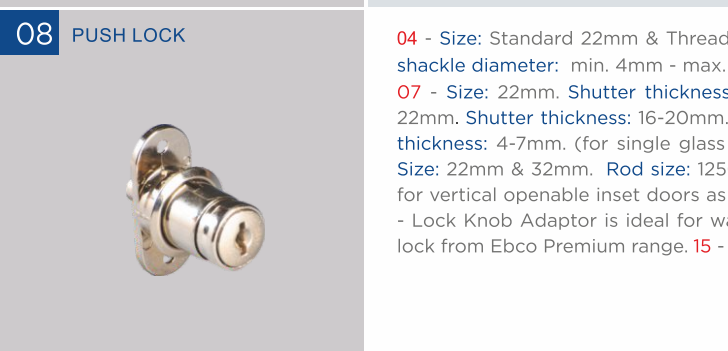
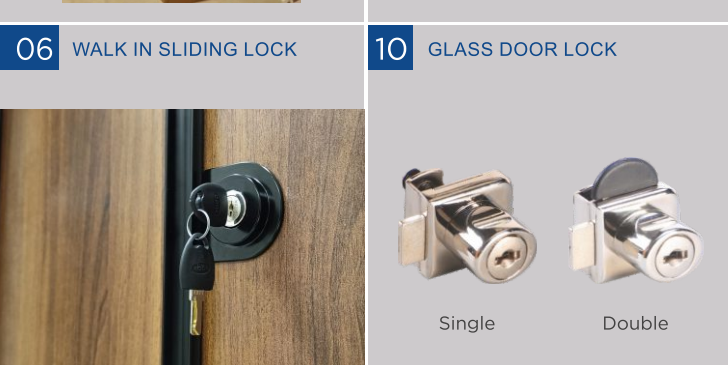
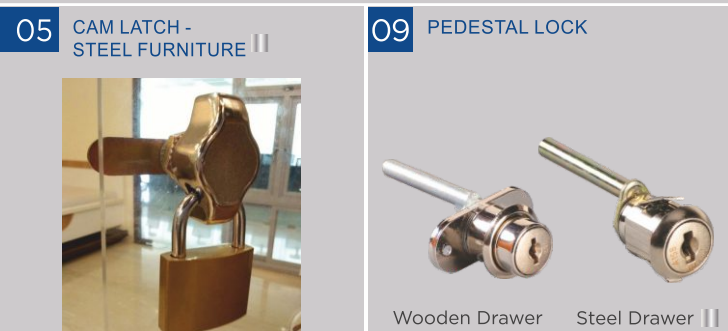
Steel Cabinet



01 - Size : 22mm.
Shutter thickness : 16-20mm.

02 - Size : 22mm & 32mm.
Shutter thickness: 16-20mm. (for 22mm and extended bolt)
24-30mm. (for 32mm) Extended bolt: extension: 21.5mm & width: 19.5 mm

03 - Shutter thickness: 16-20mm. (for wooden drawer) 0.6-1mm (for metal drawer) can lock as many as 4 drawers with 580mm locking strip.



04 - Size: Standard 22mm & Threaded 25 / 30mm. **05** - Size: 20mm. 90° rotary cam movement. Pad lock shackle diameter: min. 4mm - max. 6mm. **06** - Finish: Nickel Plated, Champagne & Special. Cam: 37/45mm. **07** - Size: 22mm. Shutter thickness: 16-20mm. **08** - Size: 22mm. Shutter thickness: 16-20mm. **09** - Size: 22mm. Shutter thickness: 16-20mm. (for wood) & 0.6-0.9mm (for steel). **10** - Sizes: 9mm & 12mm. Shutter thickness: 4-7mm. (for single glass shutters) & 4-10mm (for double glass shutters) **11** - Size: 22mm. **12** - Size: 22mm & 32mm. Rod size: 1250mm.(for 22 & 32mm.) & 1500mm.(for overlay model). **13** - Applicable for vertical openable inset doors as well as horizontal wide drawers (upto 1200mm). Rod size: 600mm. **14** - Lock Knob Adaptor is ideal for wardrobes, drawers and cabinets. Its oval design can be adaptor to any lock from Ebco Premium range. **15** - Standard core applicable to any lock from the Premium range.

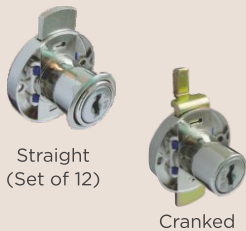


FURNITURE LOCKS

Secutek LOCKS

- Upto 200 combinations.
- Size: 20mm
- Option of Master Key system.
- Option of set locks.
- Die cast Body.

16 MULTI PURPOSE LOCK - ROUND



17 SQUARE LOCK



18 FRONT MULTI DRAWER LOCK



19 CAM LOCK



20 CAM LOCK - STEEL FURNITURE ||



21 PUSH LOCK



22 PEDESTAL LOCK



23 MORTISE LOCK FOR SLIDING DOOR



24 CUPBOARD LOCK



25 26 LOCK RECEIVER PLATE BRACKET FOR BOTTOM MOUNTING DR. SLIDE & FULL PANEL DR. SLIDE



KEYS FOR SECUTEK LOCKS



SECUTEK LOCKS & TARGET LOCKS

TARGET LOCKS

- Up to 200 combinations
- Click action mechanism
- Option of set locks
- Sheet Metal body
- Options of metal key/ key with plastic cap

30 CAM LOCK



27 MULTI PURPOSE LOCK - ROUND



31 PUSH LOCK



32 PEDESTAL LOCK



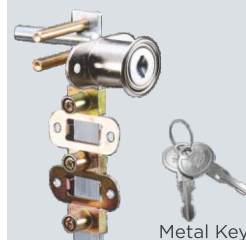
28 SQUARE LOCK



33 MORTISE LOCK FOR SLIDING DOOR



29 FRONT MULTI DRAWER LOCK (480MM & 580MM)



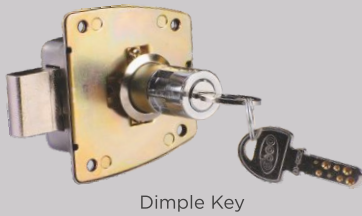
KEYS FOR TARGET LOCKS



16 - Size: 22mm. Available with Metal Key. 17 - Size : 22mm / 32mm. Available with Metal Key & folding Key. 18 - Size: 22mm. Height: 480mm & 580mm. 19 - Size: Standard 22mm and Threaded (16 / 25 / 30mm). 20 - Size: 20mm. Suitable for metal thickness: 0.6mm - 0.9mm. 21 - Size: 22mm. 22 - Size: 22mm. Available with metal key. 23 - Size: 22mm. 24 - • Having 6 lever construction & bolt operation from either side. • Can be mounted for vertical or horizontal operation. • Now available with longer key. 25/26 - Finish: Ivory / Zinc Plated Yellow. 27 - Size : 22mm. 28 - Size : 22mm & 32mm. Shutter thickness: 16-20mm. 29 - Size : 480mm & 580mm. Shutter thickness: 16-20mm. 30 - Size : Standard 22mm & Threaded (16 / 25 / 30mm). 31 - Size: 22mm. Shutter thickness: 16-20mm. 32 - Size: 20mm. Shutter thickness: 16-20mm. 33 - Size: 22mm. Shutter thickness: 16-22mm.

|| STEEL FURNITURE LOCKS

34 SecuRite CUPBOARD LOCK



Dimple Key



Brass Key

- Option of Dimple Key and Brass Key to choose from
- Master Key System (Optional)
- Stainless steel cover : non-magnetic and rivet-less.
- Long latch for additional safety - 20mm (For Cupboard Lock) & 15mm (For Drawer Lock)
- Click Action Mechanism
- Reversible Key insertion

37 CUPBOARD LOCK FOR - STEEL CABINET - 2 II



CUPBOARD LOCK - STEEL CABINET II



35 SecuRite DRAWER LOCK



Dimple Key

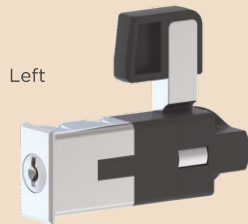


Brass Key

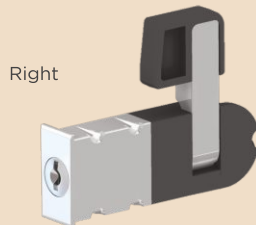
36 SLIDING WARDROBE LOCK



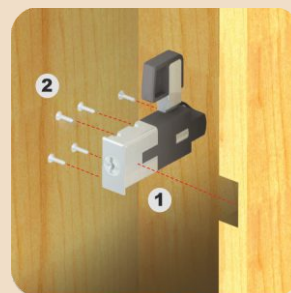
SLIDING WARDROBE LOCK (SIDE MOUNT) L/R



Left



Right



Finish : Nickel Plated



LOCKED



UNLOCKED

STEEL CABINET HANDLE



STEEL CABINET LOCK CUM HANDLE



5000 COMBINATION

CUPBOARD SLIDING LOCK



Size : 18-25mm/ 32-38mm
Finish : Nickel Plated

34 - Size: For Dimple Keys : 20, 23, 25, 29, 32, 35mm.

For Brass Keys : 20, 23, 25, 29, 32, 35mm.

35 - Size: For Dimple Keys : 16, 20, 23, 25, 29mm.

For Brass Keys : 16, 20, 23, 25, 29mm.

36 - Size: 19, 25, 32, 35mm

37 - Cut Out Dia.: 65.5 x 93.5 mm. Thickness : 0.6-1mm



FURNITURE LOCKS

4 DIGIT COMBINATION LOCKS

- Four digit combination lock for keyless operation.
- Ideal Applications:
 - Corporate Office, BPOs, Banks.
 - Home Furniture - Wardrobe, Kitchen, etc.
 - Lockers - Club, Gym, Hostel, Factory, etc.
 - Retail Showrooms.
 - Display Units - Watches, Jewellery, Gadgets, etc.
- Replace any standard furniture lock to get instant keyless access.
- Once unlocked, the housing doubles as a knob; just rotate 90° to unlatch.
- The combination can be reset to any four digit number, providing up to 10000 possible combinations.
- Two levels of code setting: Combi-Public and Combi-Personal.
- Resolve forgotten secret code easily & rapidly with secret code retriever key.

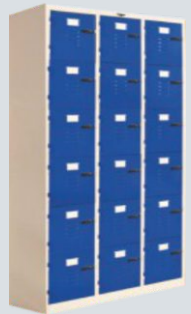


Note : Operating Instructions - Combination Lock Scan Here.

4 DIGIT COMBINATION LOCK - WOOD (L/R)



Size: 16 - 20mm
Finish: Black



4 DIGIT COMBINATION LOCK - PEDESTAL (L/R)



Size: 16 - 20mm
Finish: Black



4 DIGIT COMBINATION LOCK - STEEL CUPBOARD



4 DIGIT COMBINATION LOCK - WARDROBE 2 POINT INSET



Height : 2.4mm (1.2mm x 2)
For door thickness: 16 - 20mm

4 DIGIT COMBINATION LOCK - 2 POINT SWING (WITH ROD)

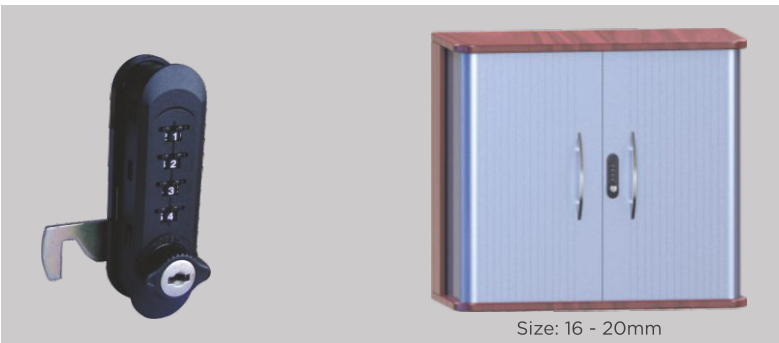


Size: For 16 - 20mm

STEEL FURNITURE LOCKS

SPECIALITY LOCKS & STEEL FURNITURE LOCKS

4 DIGIT COMBINATION LOCK - WOOD (VERTICAL) (L/R)



Size: 16 - 20mm

4 DIGIT COMBINATION LOCK - ZINC WOOD



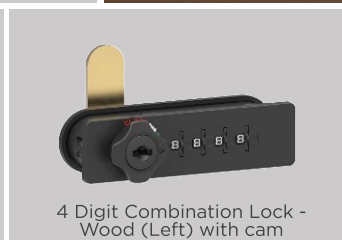
Size: For 16 - 20mm



3 Digit Combination Lock - Wood (Left) with cam



3 Digit Combination Lock - Pedestal (Right) with pin



4 Digit Combination Lock - Wood (Left) with cam



4 Digit Combination Lock - Pedestal (Right) with pin



Pole Shelving System



FEATURES

- This versatile Display System is equally suited for brand retail stores (Clothing, Apparels, Department) as well as walk-in wardrobes at home.
- It's highly flexible design enables to change the combination / layout of display without actually removing the pole systems installed.
- Multiple Adapter brackets can be chosen for Hangers, Shelves, Cabinets, Tilting Shelves, etc as per your desired application.
- Aluminium sections and die cast parts ensures strength and stability.
- Flexibility to mount the pole from floor to wall / ceiling as per the design requirement.
- Finish available: Brown / Silver / Champagne / Gold / Special Finish.



RETAIL DISPLAY SYSTEMS

POLE SHELVING SYSTEM APPLICATIONS

Living Room



Study / Work from Home



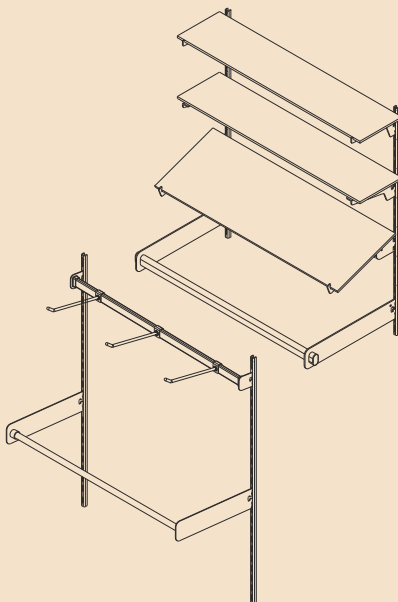
Bedroom



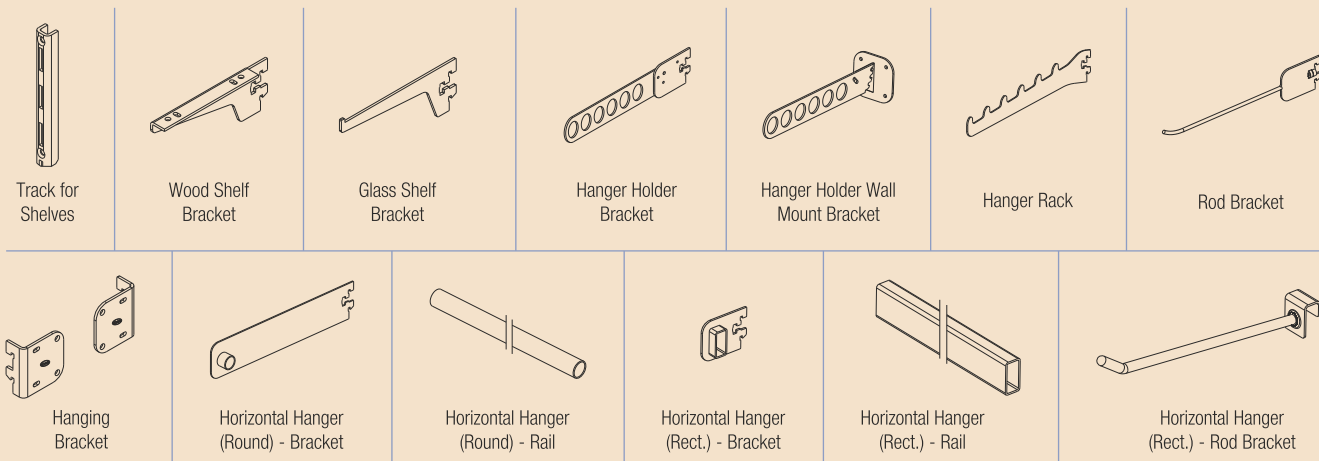
Bathroom



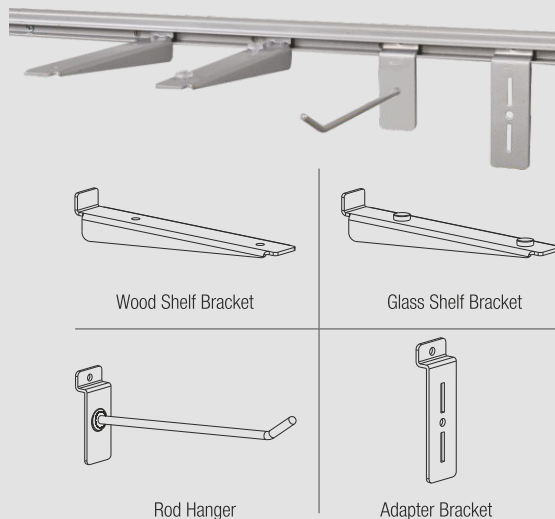
DISPLAY SHELVING SYSTEM - VERTICAL



- Elegantly designed to suit different needs.
- Available in a variety of models and sizes.
- It is ideal if you have different items to display from time to time.
- Specially designed to impart maximum strength and to eliminate play.
- A unique stabilizer screw and nut holds the shelf in place.
- Available with an Aluminium Track for light weight load and Steel Track for heavy load.
- The tracks which support the shelves are screwed on to the wall, so that they blend well with the decor.
- Available for glass, wood shelves and hanger systems.
- Track, Wood Shelf Bracket, Glass Shelf Bracket, Hanger Holder Brackets, Hanger Rack, Rod Bracket and Glass Shelf Support with Screw & Nut are also available in **SS304**.



DISPLAY SHELVING SYSTEM - HORIZONTAL





WINDOW, DOOR & GLASS HARDWARE

01 FRICTION STAY - HI LOAD (SS304)



04 CONCEALED CORNER HINGE 80 / 120 (WITH BEVELLED GROOVE)



05 WINDOW HANDLE - HEAVY (L/R)



08 MORTISE WINDOW HANDLE -3



06 ALUMINIUM WINDOW HANDLE - DELUXE 2



09 WINDOW-DOOR HANDLE WITH PUSH LATCH



07 MORTISE WINDOW HANDLE WITH LOCK 3



FEATURES

- Made of AISI 304 stainless steel.
- Pressure adjustable brake for stopping.
- Can be used for side hung horizontal axis opening ventilators, as well as top hung vertical axis opening windows.
- Self cleaning design.
- Max. opening angle: 90°
- Stack Height - 15mm (for 8" to 14") 18mm (for 16" to 28")
- Applicable in wooden, UPVC or aluminium windows.
- Also available in independent left and right hand working for better closing and alignment.
- Load capacity: 13-50Kg

02 FRICTION STAY 1319 (SS304)



03 FRICTION STAY HEAVY DUTY (SS304)



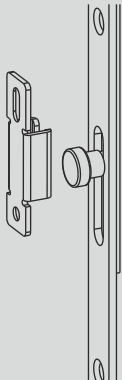
01 - Size: 8" (205mm) 10" (255mm) , 12" (305mm), 14" (355mm), 16" (405mm), 20" (510mm), 24" (610mm), 28" (710mm). **02** - Size : 10" (250mm), 12" (300mm), 14" (350mm). **03** - Size : 20" (500mm), 24" (600mm), 28" (700mm). **04** - Load : 80/120 Kgs. **05** - Finish: White/ Black **06** - Finish: White/ Black. **07** - Finish: White/ Black. **08** - Finish: White/Black. **09** - Finish: White/ Black.

TRANSMISSION LOCK STRIP FOR SWING DOORS



- Available in three lengths (600,1000,1600mm) with two & four locking points.
- Can be used for both left & right hand locking windows.
- Compatible with Ebco Mortise Window Handle with Lock (AWH-DML3/AWH-DM3)

TRANSMISSION LOCK STRIP FOR SLIDING DOORS



- Available in three lengths (600,1000,1600mm) with two & four locking points.
- Can be used for both left & right hand locking windows.
- Compatible with Ebco Mortise Window Handle with Lock (AWH-DML3/AWH-DM3)

10 WINDOW HANDLE (LOW / LOW 4-HOLE)



11 WINDOW HANDLE - EURO



12 EURO WINDOW HANDLE - 4 HOLE



13 CRESCENT LATCH



14 SLIDING WINDOW LOCK 1925



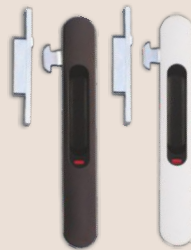
With Key

Manual

15 SLIDING WINDOW LATCH



16 SLIDING WINDOW LATCH - CLICK FIT



17 SLIDING WINDOW LATCH - CLICK FIT LONG



18 SLIDING WINDOW LATCH - EASY



SLIDING WINDOW LATCH CATCHES



SWL2-C



SWL3-D



SWL4-C



SWL5-CP



SWL6-CPH

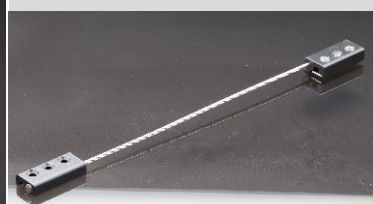


SWLC-F

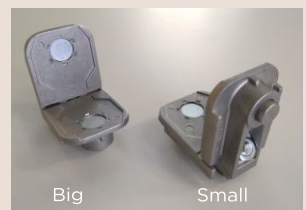
19 ALUMINIUM DOOR HANDLE



CONNECTOR ROPE FITTING



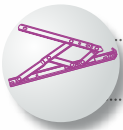
20 ALUMINIUM CORNER CLEAT



Big

Small

10 - Finish: Brown/Black/Window White/Silver/White Matt/ Champagne Gold. **11- Finish:** Brown/Black/Window White/Silver/White Matt. **12 - Finish:** Brown/Black/Window White/Silver/White Matt. **13 - Finish:** Brown/Black/Window White/Silver. **14 - Finish:** (with key) White/ Brown/Grey/Black, (manual) White/Brown/Black. **15 - Finish:** Brown/ Black/Window White/Silver/Champagne Gold. **16 - Finish:** Window White/Black/ Champagne/Brown. **17 - Finish:** Window White/ Black/ Champagne/ Brown. **18 - Finish:** Brown/Black/Window White/ Silver/ Champagne Gold. **19 - Finish:** White/Black. **20 - Size:** Big-36mm x 48mm thk. Small-22mm x 10.4mm thk.



WINDOW, DOOR & GLASS HARDWARE

SLIDING DOOR FITTING (125KGS)



SLIDING DOOR FITTINGS -
STANDARD



SLIDING DOOR FITTINGS -
FLUSH



SLIDING DOOR FITTINGS -
GLASS



Load capacity:
40, 80 & 120kgs
Finish: Black / Grey

**SOFT CLOSE KIT
FOR SDF 125**

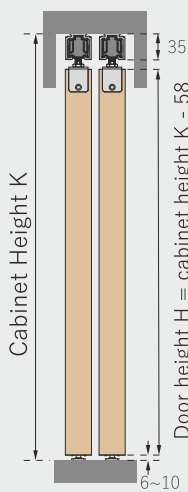
SLIDING DOOR SYSTEM 100 – SOFT CLOSE (FOR WOODEN / AL. FRAME & GLASS DOOR)



FEATURES

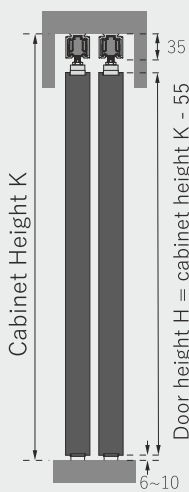
- Designed for Wooden, Al. Frame and Glass Door.
- High precise roller, stable, smooth & silent sliding.
- Easy to install and remove.
- Door Width : 580 -1200mm
- Door Weight : ≤80Kgs
- Door Thickness : 35-50mm (For Wooden & Al. Frame Door)
8-12mm (For Glass Door)

Top mounting rail



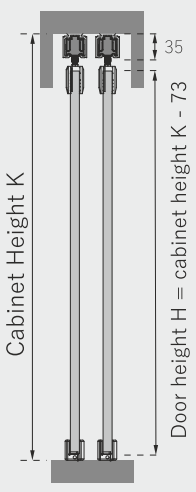
Wooden Door

Top mounting rail



Al. Frame Door

Top mounting rail



Glass Door

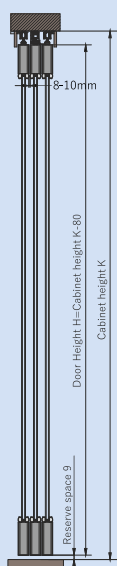
LINKED SLIDING PARTITION SYSTEM 100 – SOFT CLOSE (FOR WOODEN & AL. FRAME DOOR)



FEATURES

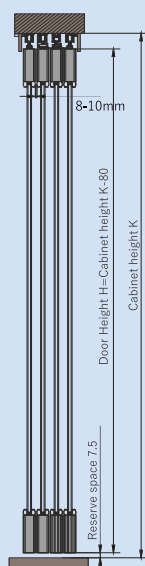
- Designed for Wooden & Al. Frame Doors.
- High precise roller, stable, smooth & silent sliding.
- Easy to install and remove.
- Door Width : 580 -1200mm (single) and 820 -1200mm (double)
- Door Weight : ≤80Kgs
- Door Thickness : 35-50mm

2+1 Door

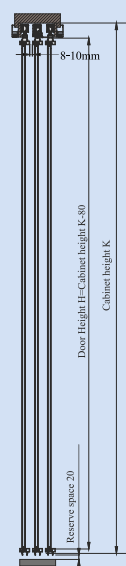


Wooden Door

3+1 Door

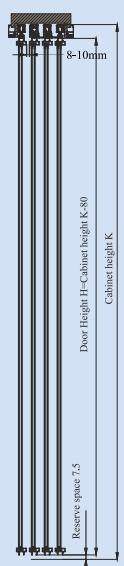


2+1 Door



Al. Frame Door

3+1 Door

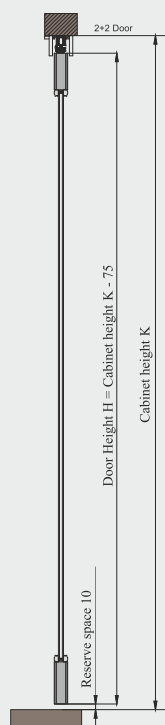


2 WAY SYNCRO SLIDING PARTITION SYSTEM 100 – SOFT CLOSE (FOR WOODEN & AL. FRAME DOOR)

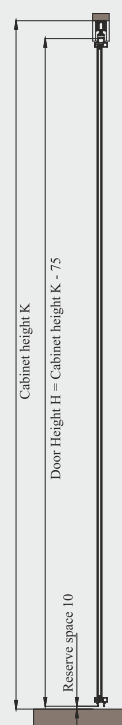


FEATURES

- Designed for Wooden & Al. Frame Partition Doors which can be opened & closed synchronously.
- High precise roller, stable, smooth & silent sliding.
- Easy to install and remove.
- Door Width : 580 - 1200mm (single) and 820 -1200mm (double)
- Door Weight : ≤80Kgs
- Door Thickness : 35-50mm



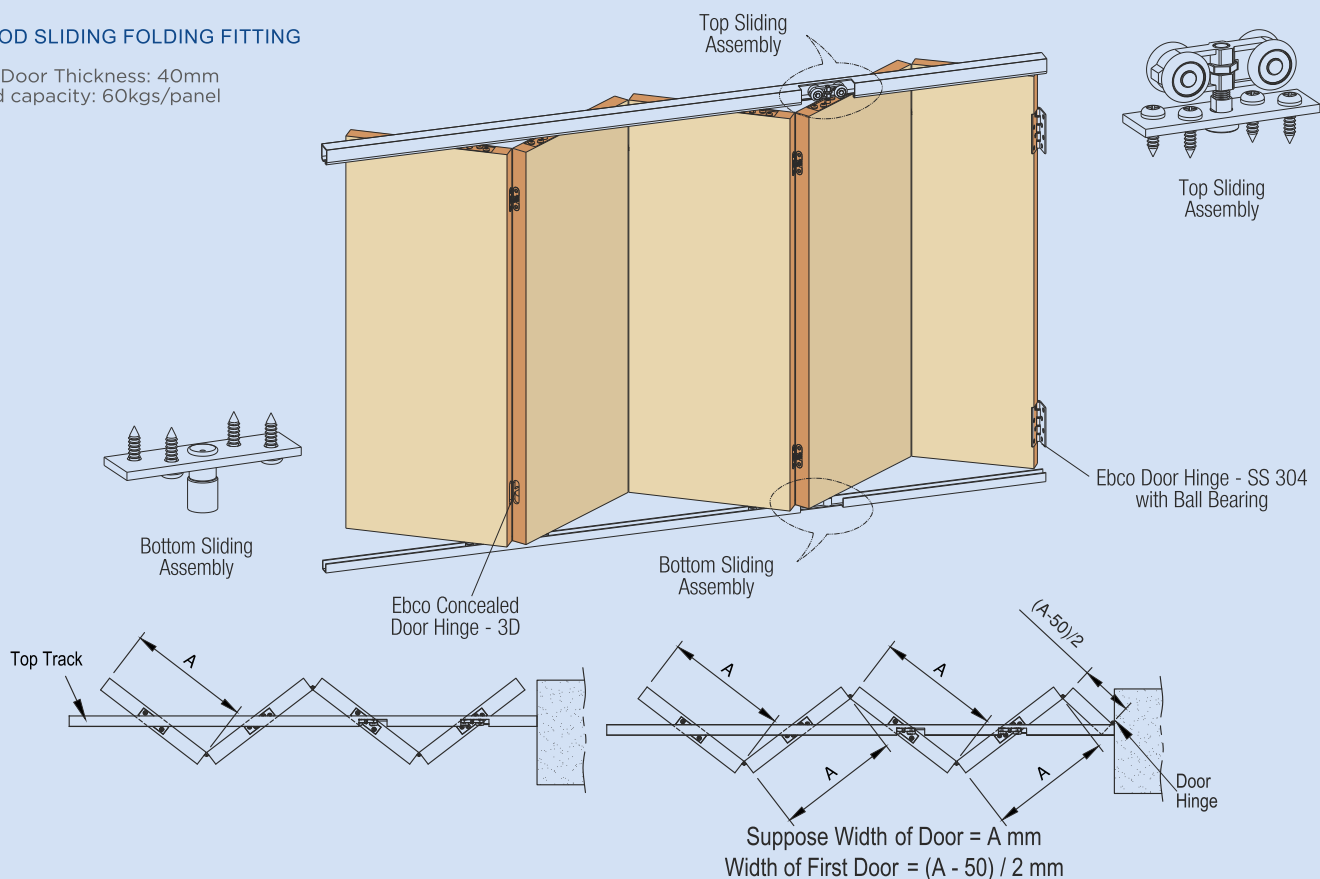
Wooden Door

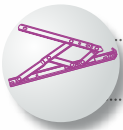


Al. Frame Door

WOOD SLIDING FOLDING FITTING

Min. Door Thickness: 40mm
Load capacity: 60kgs/panel





WINDOW, DOOR & GLASS HARDWARE

PRESTO - DOOR KNOB LOCK **PRESTO**



Anthracite

Available Finish



Nickel Satin



Antique Brass



Brushed Steel



Chrome Plated

BORING KIT FOR PRESTO LOCK



Size : 23mm & 42mm

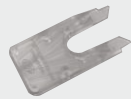
SLIDING DOOR LOCK - WOOD, SWING DOOR LOCK - WOOD / ALUMINIUM.



Sliding Door Lock



Swing Door Lock



Opening Tool



TO OPEN:
SIMPLY PRESS DOWN
ON THE TOP CAP



TO CLOSE:
LET GO OF THE TOP CAP

DOOR HINGES - SS 304 (WITH 2 BALL BEARING)



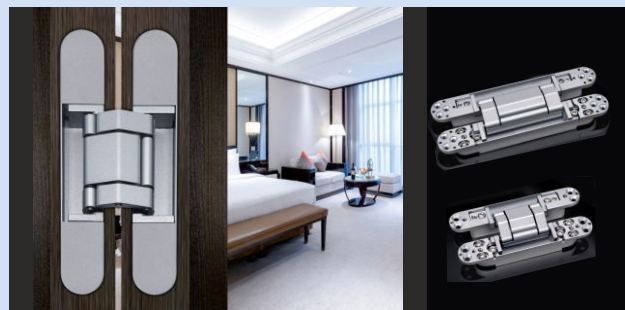
- Made out of SS304, the hinges are designed with precision ball bearings.
- Size: 75x75x2.0mm
125x75x2.5/3.0mm
100x75x2.5/3.0mm

BUTT HINGES SS 304 – WELDED (W/O BEARING)



- Made out of SS 304
- Suitable for doors of different sizes and weight.
- Available Sizes : 4 x 12", 5 x 12", 3 x 12"
- Available with screws.

CONCEALED HINGE - 3D



- Ideal for flush wooden door applications.
- 3-dimensional adjustment function allows vertical, horizontal and depth adjustment after hinge is installed.
- 300,000 cycles tested.
- Cover hides all screw for aesthetic looks.
- For 3D, Max. Door Weight, Min Door Thickness (T) & Width (W): For 40Kgs - 35mm (T) & 850mm (W), For 80Kgs - 40mm (T) & 1000mm (W), For 120Kgs - 45mm (T) & 1400mm (W). Max. Opening Angle: 180°.

SECURITY DOOR LATCH



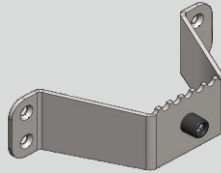
- For Main doors: apartments, villas & hotels.
- Open or block the door with easy to flip turn designed Security door latch.
- Only attaches to the door frame, no fitting on the door
- Comes with packing (optional) for thick doors.
- Minimum frame width: 38mm
- Finish: Brown/Anthracite/Transparent Gold

DOOR VIEWER



- This door viewer gives ultra clear view with 165° wide angle.
- Door Thickness : 25 - 60mm
- Drill Hole : Ø25mm
- Finish : Brushed Steel and Antique.

DOOR OPENER BRACKET



- Ebco Door Opener Bracket is an ideal solution, which eliminates the use of hand to open the door. Ideal for offices, hospitals, retail outlets, etc.
- Prevents contamination and spread of germs/viruses.
- Wall bumper to protect the wall from damage.
- Curved tooth design ensures better grip.
- To be used in commercial latch-less doors.

DOOR LATCH -SS 304



TURN LATCH



DOOR CLOSERS



21 - DC 101 Door Width : 850 mm. Door Weight : 65 kgs. Type : Hold Open. Opening Angle : 180°. DC 101-B2 Door Width : 800 mm. Door Weight : 45 kgs. Type : Non Hold Open. Opening Angle : 180°. **22** - DC 201 Door Width : 1050mm. Door Weight : 85 kgs. Type : Hold Open. Opening Angle : 180°. DC 201-B Door Width : 900mm. Door Weight : 65 kgs. Type : Non Hold Open. Opening Angle : 180°. DC 201-C Door Width : 1050mm. Door Weight : 85 kgs. Type : Without Hold Open. Opening Angle : 180°.

21

DOOR CLOSER - DC 101
DOOR CLOSER - DC 101-B2

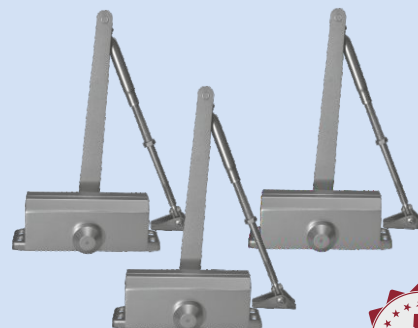


5,00,000
CYCLE TESTED



22

DOOR CLOSER - DC 201
DOOR CLOSER - DC 201-B
DOOR CLOSER - DC 201-C



5,00,000
CYCLE TESTED

DC 201-C



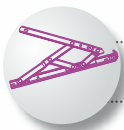
DC 201



DC 201-C

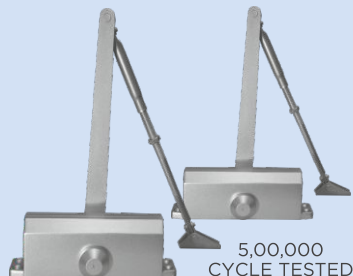


DC 201-B



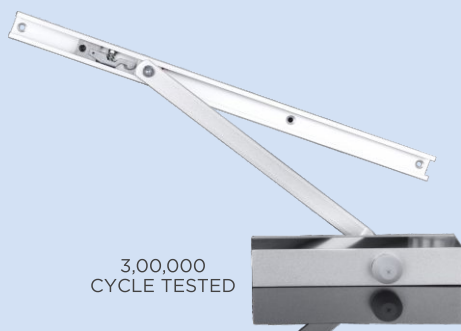
WINDOW, DOOR & GLASS HARDWARE

23 DOOR CLOSER - DC 301 DOOR CLOSER - DC 301-B



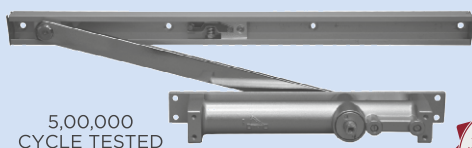
5,00,000
CYCLE TESTED

24 DOOR CLOSER - PELMET ARM



3,00,000
CYCLE TESTED

25 DOOR CLOSER - DC 1001



5,00,000
CYCLE TESTED



26 DOOR CLOSER - DC 1002



5,00,000
CYCLE TESTED



23 - DC 301 Door Width : 1200mm. Door Weight : 105 kgs. Type : Hold Open. Opening Angle : 180°. DC 301-B Door Width : 1200mm. Door Weight : 105 kgs. Type : Non Hold Open. Opening Angle : 180°. **24** - Door Width : 500 - 1000mm. Door Load Capacity: 30 - 80 kgs. Type : Hold Open. Opening Angle : 130°. **25** - Door Width : Up to 850mm. Door Weight : 65 kgs. Type : Hold Open. Opening Angle : 180°. **26** - Door Width : Up to 1000mm. Door Weight : 85 kgs. Type : Hold Open. Opening Angle : 150°.

FLOOR SPRING & ACCESSORIES



FLOOR SPRING - 84

- 20,00,000 cycle tested
- Universal Application - Load Adjustment From: 80kg - 100kg (For DFS 84-100C model) and 100kg - 130kg (For DFS 84-130C model)
- Max. Door Width: 900-1000mm (For DFS 84-100) and 1000-1100mm (For DFS 84-130).
- Max. Opening Angle - 130°
- 90° Hold Open Angle



DFS 84-100C

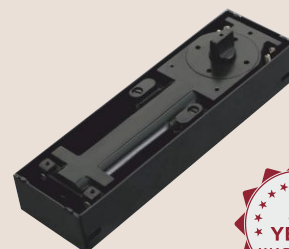


DFS 84-130C



FLOOR SPRING - 75V

- 20,00,000 cycle tested
- Universal application - Load adjustment from 60 to 150 kg
- Door Width - 1100mm
- Max opening angle - 360°
- Hold Open angle at 90° and at any point between - 105° to -105°



27 FLOOR SPRING - 60



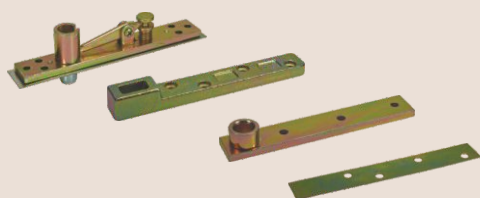
28 FLOOR SPRING - 90



29 FLOOR SPRING - 250



FLOOR SPRING DOOR ACCESSORIES (DFS-A1)



FLOOR SPRING DOOR ACCESSORIES (DFS-A2)



30 BOTTOM PIVOT (DPF4-01)



31 TOP PIVOT (DPF4-02)



PATCH FITTINGS (SS 304)

Glass Thickness: 10 - 12mm
Finish: Brushed Steel

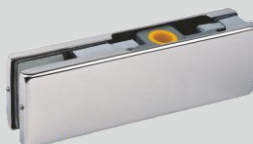
BOTTOM CORNER PATCH

DPF1-01



TOP CORNER PATCH

DPF1-02



CORNER 'L' PATCH WITH PIVOT

DPF1-04



CENTRE LOCK

DPF2-01



STRIKE PATCH FOR CENTRE LOCK

DPF2-02



SINGLE CONNECTOR PATCH

DPF3-01



CORNER 'L' PATCH WITHOUT PIVOT

DPF3-02



PATCH FITTINGS

Finish: Brushed Steel

OVER PANEL PATCH WITH PLATE

DPF1-03



QUAD CONNECTOR PATCH

DPF3-03



DOUBLE CORNER PATCH

DPF3-04

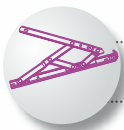


32 AUTO CLOSING PATCH

DACPI-100



27 - 5,00,000 cycle tested. Max. open angle : 116°. Hold open angle: 90° Max. Door Width : 700mm. Max. Door Weight: 60 kgs. **28** - 5,00,000 cycle tested. Max. open angle : 116°. Hold open angle: 90° Max. Door Width : 800-1000mm. Max. Door Weight : 90 kgs. **29** - 5,00,000 cycle tested. Door Width : 1200mm. Max. open angle : 130°. Hold open angle: 90°. Max. Door Weight : 250 kgs. **30** - To be used directly on the floor without floor spring. **31**- Top receiver pivot for wooden or ceiling installation. **32** - Max. open angle : 360°. Hold open angle: 90° Max. Door Width : 1100mm. Max. Door Weight: 100 kgs.



WINDOW, DOOR & GLASS HARDWARE

GLASS CONNECTORS (SS 304)

Glass Thickness: 8 - 12mm
Finish: Brushed Steel/ Polished SS

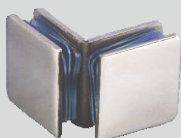
90° WALL TO GLASS OR FLOOR TO GLASS CONNECTOR



90° WALL TO GLASS CONNECTOR



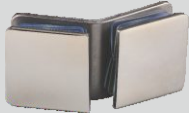
90° GLASS TO GLASS CONNECTOR



135° WALL TO GLASS CONNECTOR



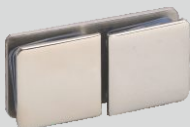
135° GLASS TO GLASS CONNECTOR



180° WALL TO GLASS CONNECTOR



180° GLASS TO GLASS CONNECTOR



3 WAY GLASS TO GLASS CONNECTOR



SHOWER HINGES (SS 304)

Glass Thickness: 8 - 12mm
Max. Load: 54kgs.
Finish: Brushed Steel/ Polished SS

SHOWER HINGE 90° (WALL TO GLASS) - T TYPE



SHOWER HINGE 90° (WALL TO GLASS) - L TYPE



SHOWER HINGE 135° GLASS TO GLASS



SHOWER HINGE 180° GLASS TO GLASS



SHOWER HINGE 90° GLASS TO GLASS



GLASS DOOR LOCKS (SS 304)

Finish: Brushed Steel
Glass Thickness: 10mm -12mm

OPENABLE GLASS DOOR LOCK - GLASS TO WOOD - SS304



OPENABLE GLASS DOOR LOCK - GLASS TO GLASS - SS304



OPENABLE GLASS DOOR LOCK - GLASS TO GLASS - SS304 - KNOB



SLIDING GLASS DOOR LOCK - GLASS TO WOOD - SS304



SLIDING GLASS DOOR LOCK - GLASS TO GLASS - SS304



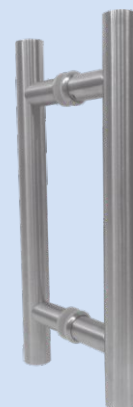
GLASS DOOR HANDLES (SS 304)

Finish: Brushed Steel

33 DOOR HANDLE - D



34 DOOR HANDLE - H



33 Sizes		Hole to hole
ØDia(mm)		ØDistance(mm)

Ø19mm	X	250mm
-------	---	-------

Ø22mm	X	300mm
-------	---	-------

Ø25mm	X	450mm
-------	---	-------

Ø32mm	X	600mm
-------	---	-------

34 Sizes		Hole to hole
ØDia(mm)		ØDistance(mm)

Ø22mm	X	150mm
-------	---	-------

Ø25mm	X	200mm
-------	---	-------

Ø25mm	X	300mm
-------	---	-------

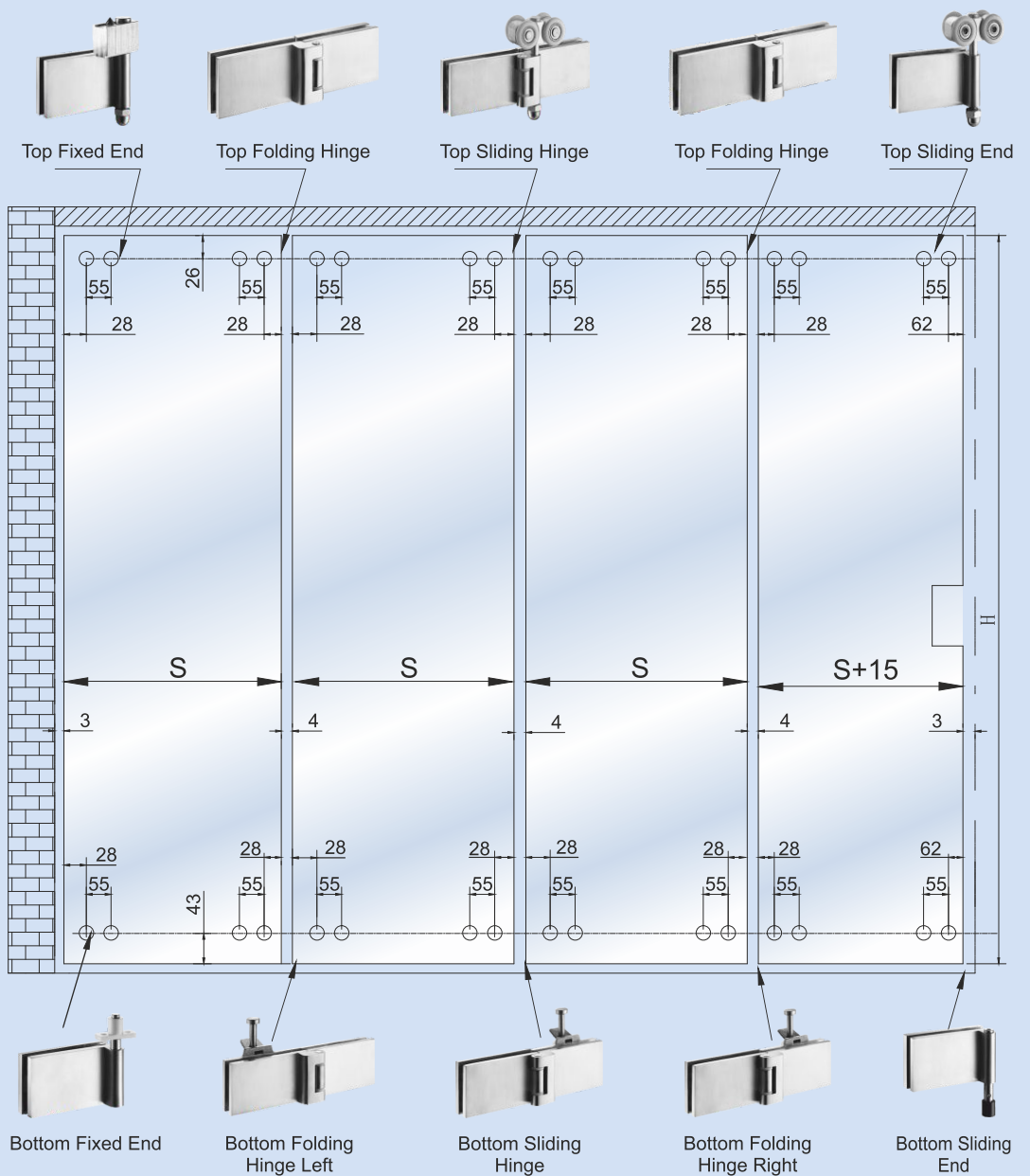
Ø32mm	X	450mm
-------	---	-------

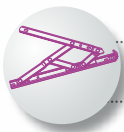
Ø32mm	X	750mm
-------	---	-------

GLASS SLIDING FOLDING SYSTEM 2 (SS 304)



Max. Door Width: 800mm
 Max. Door Height: 2000mm
 Max. Door Weight: 60kgs each
 Finish: Brushed Steel





WINDOW, DOOR & GLASS HARDWARE

SHOWER SLIDING FITTINGS - RECTANGULAR

- Made out of SS304
- Max. load - 60kgs.
- Suitable for 8mm to 10mm glass thickness .
- Max. installation length 2 mtrs.
- Glass to be toughened after making the holes.



SHOWER FITTINGS Finish: Brushed Steel/SSS/ Polished SS

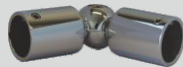
WALL TO TUBE
CONNECTOR -
19MM



TUBE TO GLASS
CONNECTOR -
19MM



TUBE TO TUBE
CONNECTOR -
19MM



SHOWER ROD
Ø 32 X 24



SHOWER
DOOR
KNOB



DOOR HANDLE -
DIA 19MM X 150MM X
450MM

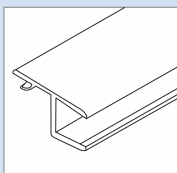


DOOR
STOPPER



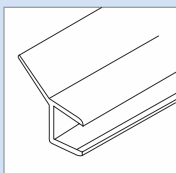
PLASTIC SEALS

35



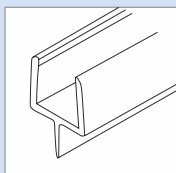
PVC SEAL
BPS1-10

36



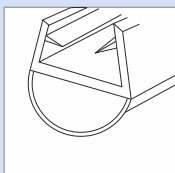
PVC SEAL
BPS2-12mm

37



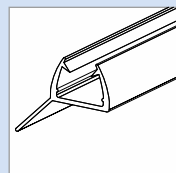
BOTTOM PVC SEAL
BPS3-08/12mm

38



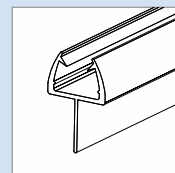
PVC SEAL
BPS7-S08/S12mm

39



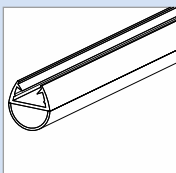
PVC SEAL
PS2-10/12

40



BOTTOM PVC SEAL
PS3-12

41



PVC SEAL
PS7-S10/S12

SLIDING GLASS DOOR HANDLE

42

SLIDING GLASS DOOR
HANDLE - SS304



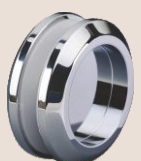
SGD1 BS/PS

43

SLIDING GLASS DOOR
HANDLE - ALUMINIUM



SGD2 AP



SGD3 AP

35 - Glass Thickness: 10mm (BPS1-10mm). 36 - Glass Thickness: 12mm (BPS2-12mm). 37 - Glass Thickness: 8 & 12mm (BPS3-08/12). 38 - Glass Thickness: 8 & 12mm (BPS7-08/12). 39 - Glass Thickness: 10 & 12mm (PS2-10/12). 40 - Glass Thickness: 12mm (PS3-12). 41 - Glass Thickness: 10 & 12mm (PS7-S10/S12). 42 - Glass Thickness: 8-12mm. Finish: Brushed Steel/SSS/Polished SS. 43 - Glass Thickness: 8-12mm. Finish: Aluminium Polished.

Furniture Fittings Care to last long

DO'S & DON'Ts



Install the products as per fitting instructions provided.



Ensure proper adjustments/alignments and after installation (including floor level and cabinet dimensions).



Hardware installation to be carried out only after civil & painting work is completed.



Always use a clean and dry cloth to wipe any part of the hardware. May be done twice a month.



For materials such as stainless steel etc., always use a special cleaner (if available) or clean water in a soft cloth or sponge (slightly damp, not wet) and re-wipe the area with a dry cloth once done.



If unsure about product installation, please download fitting instruction from www.ebco.in or contact our authorized distributor/dealer or company directly for assistance.



Do not use any kind of cleaning agents such as Thinner, Turpentine Oil, Colin, Detergent Solutions etc. to clean hardware components. Do not apply Paints, Polish, Varnish.



Do not abuse the product- i.e, hammering and forcefully exceeding the opening angles, forcefully pushing the channels without considering/checking for side gaps, exceeding the specified load capacity, exposing to heat or fire etc. (Do not alter or modify a product)



Do not lubricate the products without first checking the applicability of the lubricant with the company.



Do not open a product to inspect its internal parts without consulting an authorized distributor or the company directly.



Do not let saw dust and concrete rubble/dust enter any components of the hardware.



Our products are easily available through a network of 30 Authorized Distributors, which supply more than 5,000 dealers and hardware shops around the country. We have number of exclusive product display centers around the country – one in every major city of India and new ones opening every year. These are consistently updated to exhibit the latest additions to our ever-widening range; and provide venues for product training and after sales support for installation.



- **BROCHURES**
- **LEAFLETS**
- **CATALOGUES**