

Special Features

- Easy to install and use as foldaway table or shelf where space is limited.
- Ideal solution to keep your room organized and tidy.
- Load Capacity - 80kgs
- Suitable for multipurpose applications for home, offices, retail stores, etc.
- Special release latch helps to fold the table.
- Available in two length: 225 & 325mm.



Specifications

Code Nos.	Dim 'X' (mm)	Max. Load	Finish
TBM-225	225	80kgs	AT / BR / WM
TBM-325	325		



Fitting Instructions

1. Screw the Side Bracket to the wall with wall plugs and screws.(Ref. Fig.1). The wall must be of solid wood, brick work or concrete only. Do not use on plywood, blockboard etc.
2. It can be folded and kept while not in use. Press the latch as shown in Fig.2 & 2A the bracket will automatically fold.
3. Do not press and force the fittings to Fold as shown in Fig. 3.

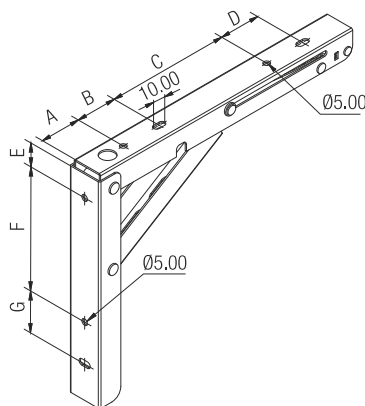


Fig. 1

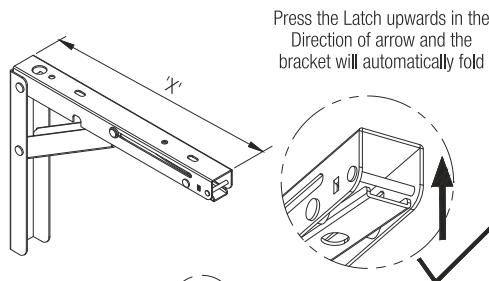


Fig. 2A

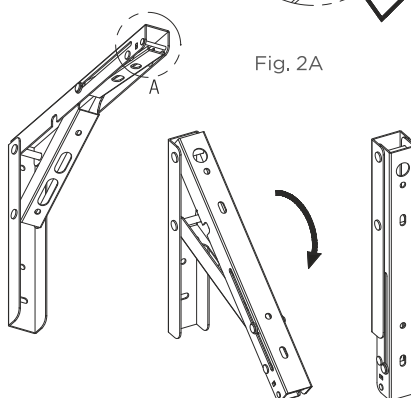


Fig. 2

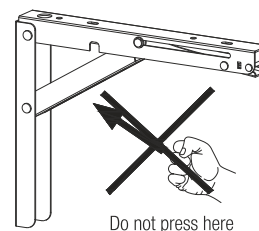


Fig. 3

Code Nos.	Dim 'A'	Dim 'B'	Dim 'C'	Dim 'D'	Dim 'E'	Dim 'F'	Dim 'G'
TBM225	32.0	32.0	96.0	32.0	18.50	96.0	32.0
TBM325	32.0	32.0	160.0	32.0	18.50	128.0	32.0