



Special Features

- Ideal for 19mm (3/4") section.
- Available as a pair for left and right hand sliding windows.
- Designed to engage automatically with a spring loaded slide catch.
- It also has a unique safety lock switch.
- Also available with Cranked Hook for 25mm (1") section.

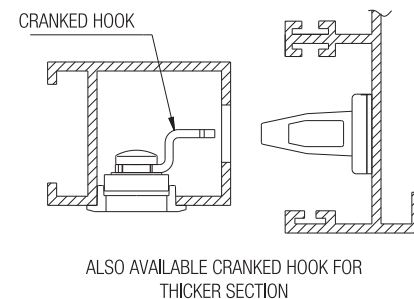
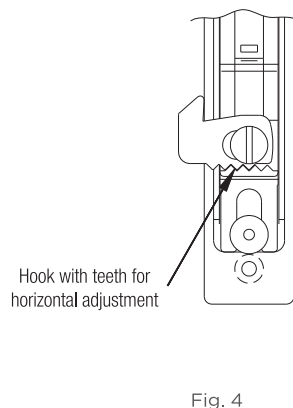
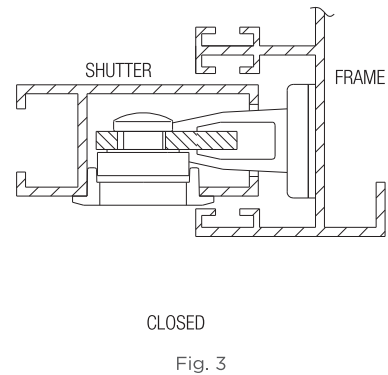
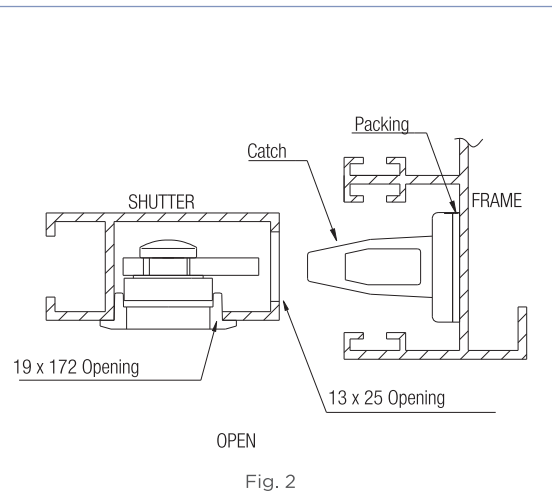
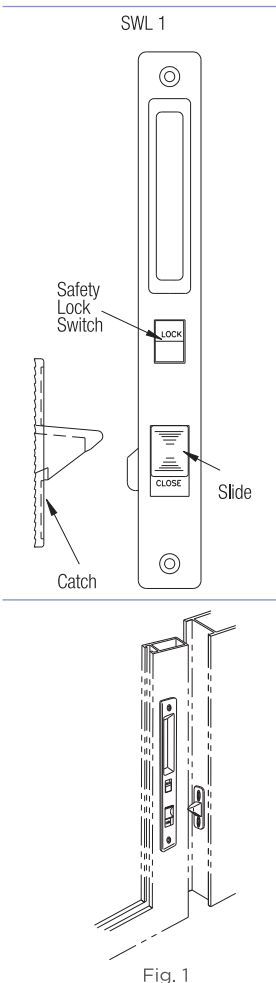
Specifications

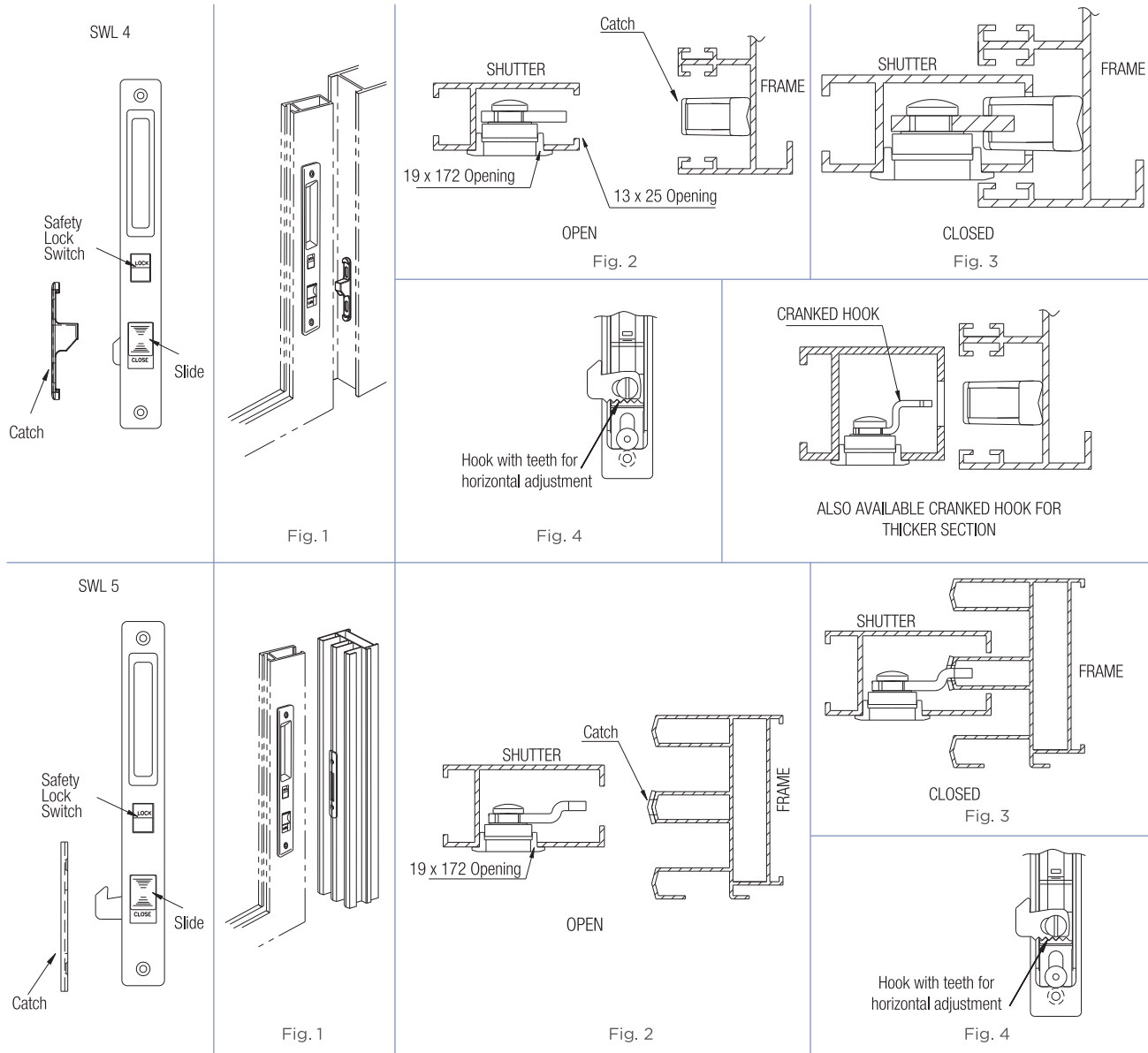
Item	Code Nos.	Receiver Plate	Finish
Sliding Window Latch	SWL 1	SWL 1-C	BR/BL/ WW SL/CG
Sliding Window Latch-Slide Catch	SWL 4	SWL 4-C	
Sliding Window Latch-Cranked	SWL 5	SWL 5-CP	



Fitting Instructions

1. Body is fitted onto the sliding window shutter (Refer Fig. 1).
2. It is fitted into a cavity of 19mm x 172mm (Refer Fig. 2).
3. An opening of 13mm x 25mm is required in the width of the section for the catch to engage with the hook (Refer Fig. 2).
4. Catch is fitted on the inside of the frame such that it engages with the hook when window is shut (Refer Fig. 3).
5. Hook can be unscrewed and shifted horizontally to suit different sections (Refer Fig. 4).





Hook Options for Sliding Window Latch

HSWL1	HSWL2	HSWL3	HSWL4	HSWL5	HSWL6
<p>17.7 24.2 9.5</p>	<p>17.7 32.0 9.5</p>	<p>17.7 31.5 13.5</p>	<p>17.7 45.4 9.5</p>	<p>17.7 43.3 15.75</p>	<p>17.7 37.0 23.00</p>
<p>9.50 12.00</p>	<p>17.0 20.0</p>	<p>16.5 19.5</p>	<p>30.5 33.5</p>	<p>28.5 31.5</p>	<p>22.0 25.0</p>