

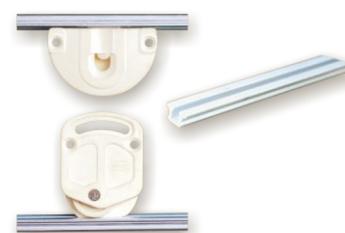
# SLIDING CABINET SHUTTER FITTING

## Special Features

- Ideal for sliding cabinet shutters.
- Special rollers for smooth silent running.
- Anodized Aluminium rails for long life.
- Eccentric arrangement for gap setting.
- PVC rail also available.

## Specifications

Item	Code Nos.	Load / Set	Finish
Sliding Cabinet Shutter Fitting	SCF-1	12 Kgs.	WH / BR
Aluminium Rail 2.44mtr. / 3mtr.	SCF-A1		AS
	SCF-A1-3M		
PVC Rail 2.44mtr.	SCFP-1-2		WH/ BR
PVC Rail 3.66mtr.	SCFP-1-3		



Shutter Thickness	Distance 'A' mm
16mm	21.0 Min.
19mm	24.0 Min

## Fitting Instructions

1. Use Ø35 mm cutter to make cavities on the inside of shutter as shown in Fig.1
2. Cavity should be 10mm deep.
3. Fit top housing and bottom housing in top and bottom cavities respectively.
4. Rail is fitted in a slot at top and bottom of cabinet. Groove should be 8 mm wide and 6 mm deep as shown in Fig.2
5. Wheel of bottom housing should sit in bottom rail.
6. Spring loaded guide in top housing is pulled down so as to engage in top rail there by retaining the shutter. (Refer Fig.3).

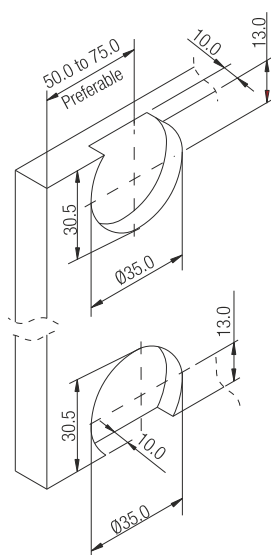


Fig.1

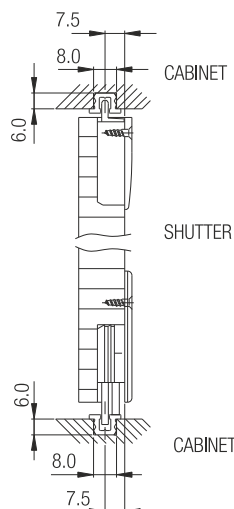


Fig.2

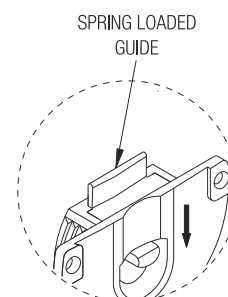


Fig.3

