

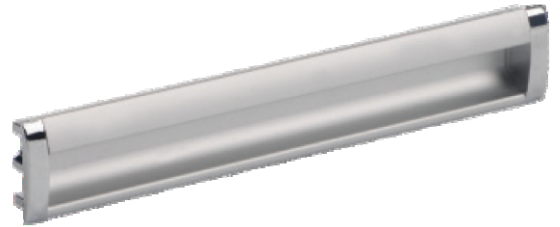
SHUTTER HANDLE - ALUMINIUM 3512

Special Features

- Ergonomically designed for good grip.
- System - 32 compatible.
- Required routing.

Specifications

Code Nos.	Distance 'A'	Distance 'B'	Finish
SH-3512-3	96	102	AS
SH-3512-5	160	166	
SH-3512-7	224	230	



Fitting Instructions

1. Make slot of 36 mm width and for Length & screw center Refer Distance A & B.(Ref. Fig.1).
2. End Brackets have M4 tapping with centre to centre distances compatible with System - 32.

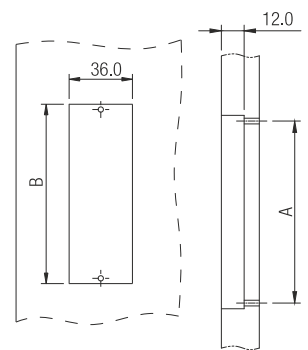
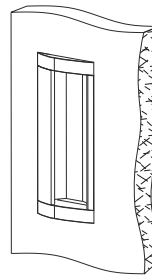
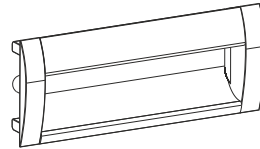


Fig.1