

# KEYBOARD TRAY FULL EXTENSION - SOFT PAD



## Special Features

- Specially designed with full extension slide.
- Smooth quiet movement with ball bearings.
- Soft palm provided to prevent fatigue while working.
- Height adjustment on mounting brackets.
- Length: 250mm
- Extension: 260mm
- Locks at extended position.
- Direct front installation.
- Max. load 12 Kgs.



## Specifications

Code No.	Finish
KTS25FE	BL

## Fitting Instructions

1. Minimum horizontal gap required 600mm.
2. Drill as per drilling diagram Fig.1.
3. Assemble height adjustment brackets on to slides using M4 screw provided as in Fig.2.
4. Height adjustment bracket should be adjusted for desired height.
5. Screw the mounting bracket onto the table as shown in Fig. 3.

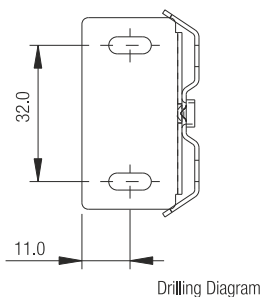


Fig. 1.

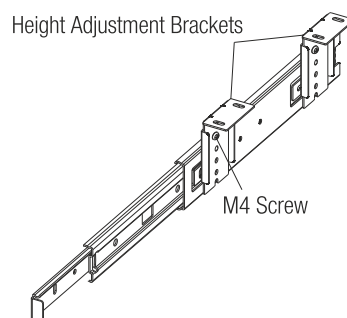


Fig. 2

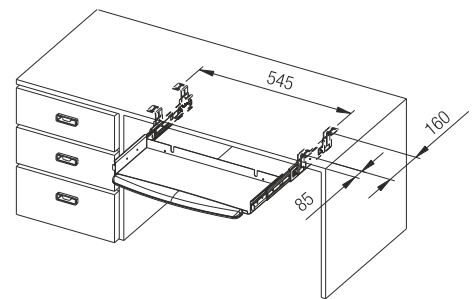
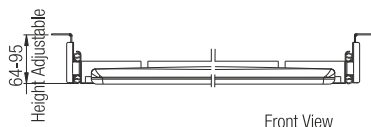


Fig. 3



Front View

