

SMART LIFT SINGLE LEG - GAS LIFT (CENTER POLE 3)



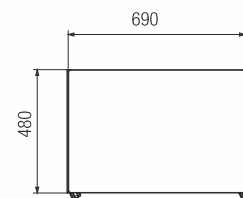
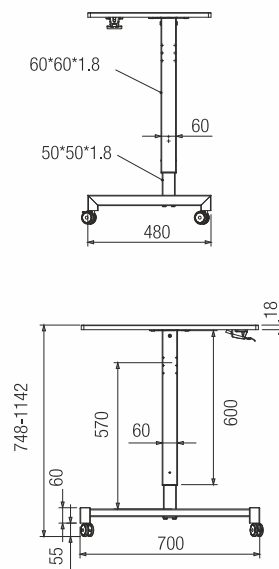
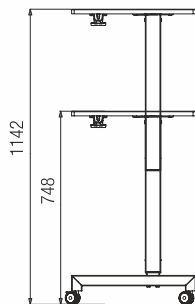
Special Features

- Ideal for offices, institutions and home applications.
- Raise or lower the desk at any desired height with in-built hand lever.
- Single pole structure with built-in castors enables easy movement.
- Height adjustment: 748 - 1142mm
- Table top size: 690 x 480 x 18mm
- Stroke: 394mm
- Load capacity: Dynamic - 5Kg, Static - 50kg



Specifications

Code No.	Height (mm)	Stroke mm	Capacity (kg.)	Finish
SLSL2 GTT-WM	748-1142	394	Dynamic 5 / Static:50	WH



Scan to view
fitting instructions