

HI SLIDE TOPPER 16-46

Special Features

- Specially designed mechanism which is top and bottom mounted, providing clear and easy access
- Ideal for 2 & 3 overlay top running shutters
- For wardrobes with extra-large shutters with effortless opening and sliding
- Soft closing & soft opening function allows the shutter to close in slow motion without banging
- Max Height: 2400mm
- Door Width: 750mm
- Max. weight per door - 80kgs/door
- Thickness of door ranging from 16mm to 46mm
- Add on soft close kit for Hi slide Topper 16-46 for 3 doors to prevent banging of 1st and 3rd (inner) shutters with each other while opening. The kit consists of 2 Upper Dampers and 1 Anti-Collide Stopper



Specifications

Item	Code Nos.	Size	Finish
Hi Slide Topper 16-46 For 2 doors (complete 2 door fittings with top & bottom soft close attachment kit)	HST16-46-802	Door Thickness 16mm-46mm Max Weight per door: 80Kg	AS
Hi Slide Topper 16-46 For 3 doors (complete 3 door fittings with top & bottom soft close attachment kit)	HST16-46-803	Door Thickness: 16mm-46mm Max Weight Per Door: 80kg	AS
Aluminium Track for Hi Slide Topper 16-46 (set of top and bottom tracks in 2.44 metres)	HST16-46-T2	2.44m	AS
Aluminium Track for Hi Slide Topper 16-46 (set of top and bottom tracks in 3.66 metres)	HST16-46-T3	3.66m	AS
Soft Close Kit For Hi Slide Topper 16-46 For 3 Doors-2 Upper Dampers +1 Anti Collide Stopper	HST16-46-803SCK	—	GR
Centro - Soft Close attachment for 3 Door fittings (Topper 16 - 46)	HSTC1	—	GR



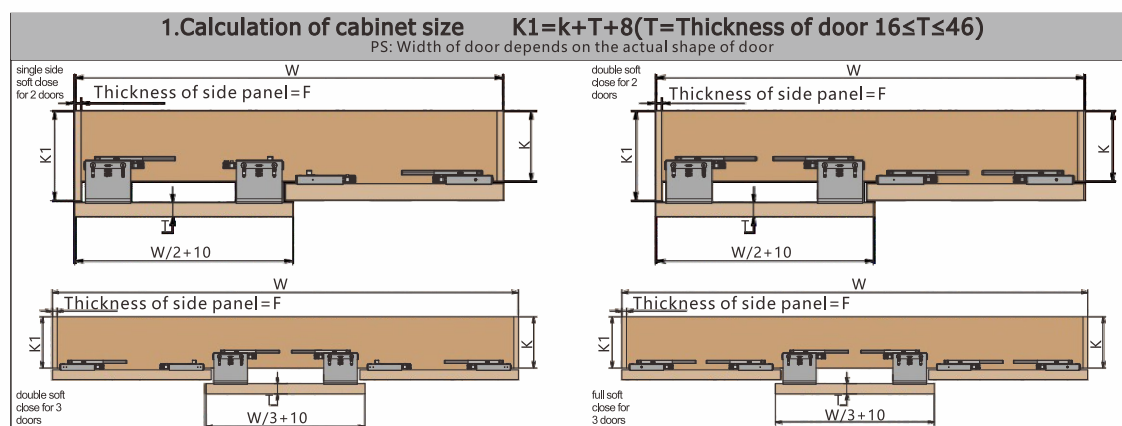
YouTube

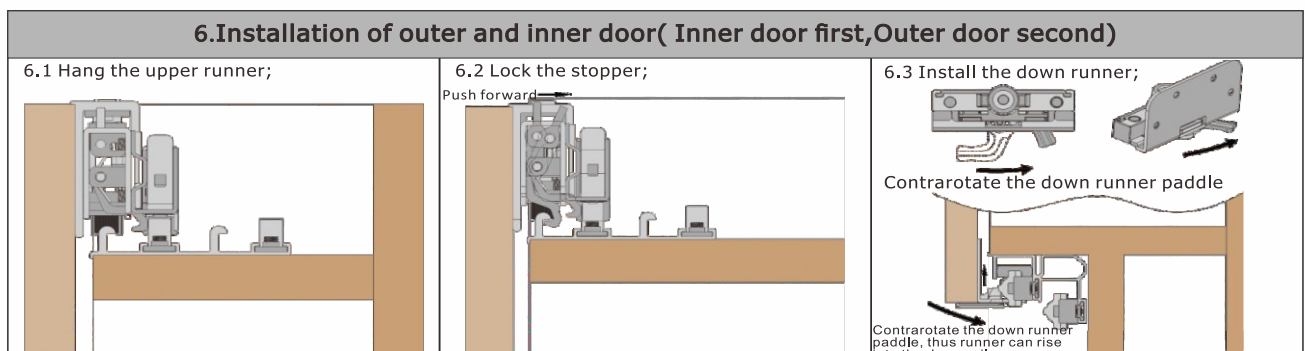
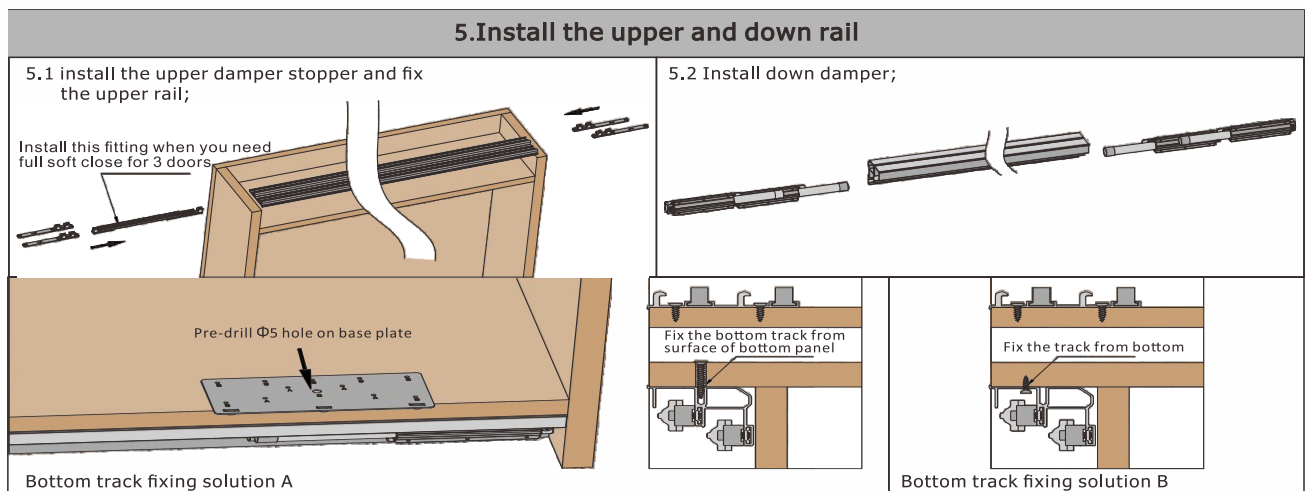
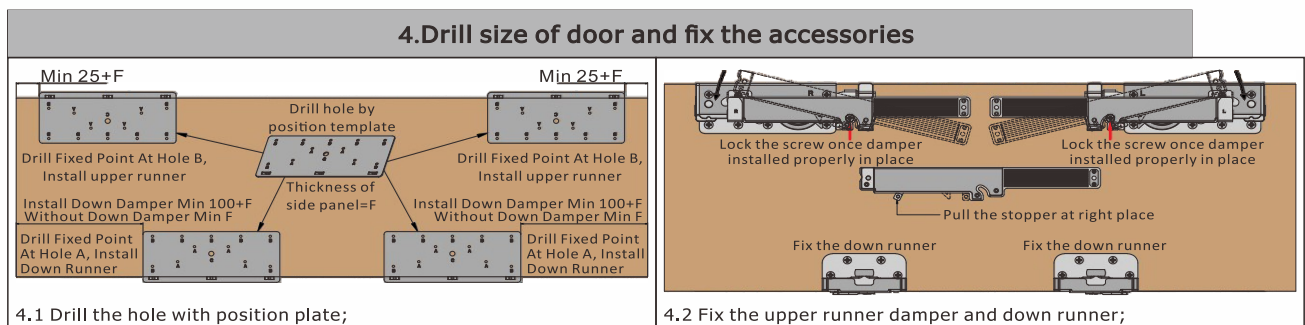
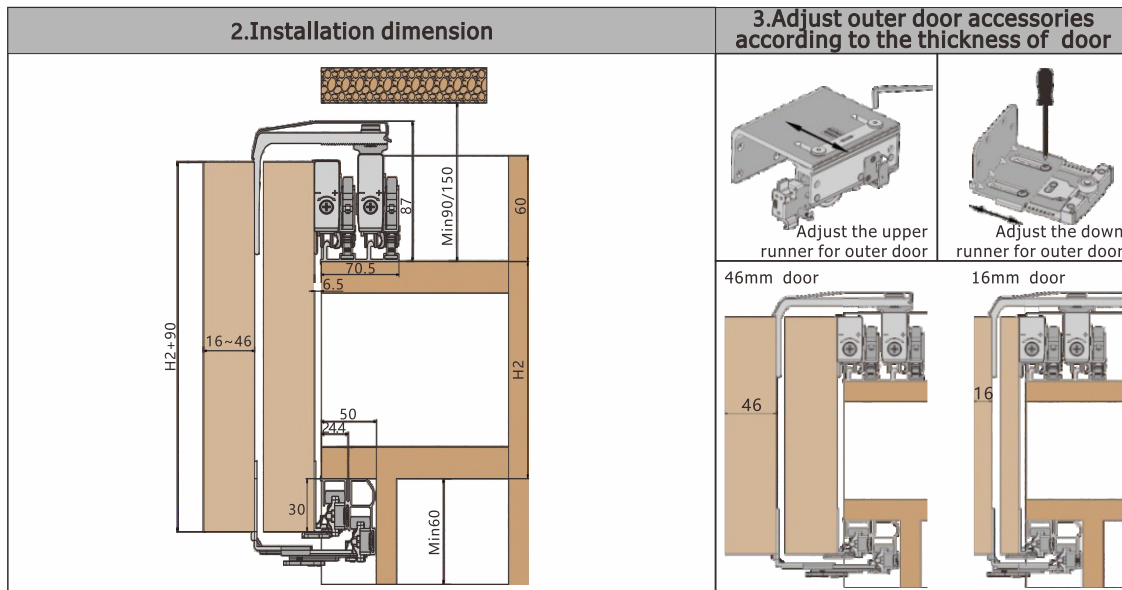
WATCH VIDEO

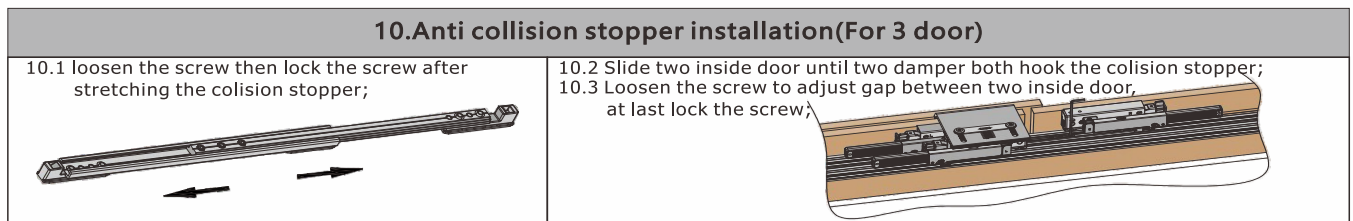
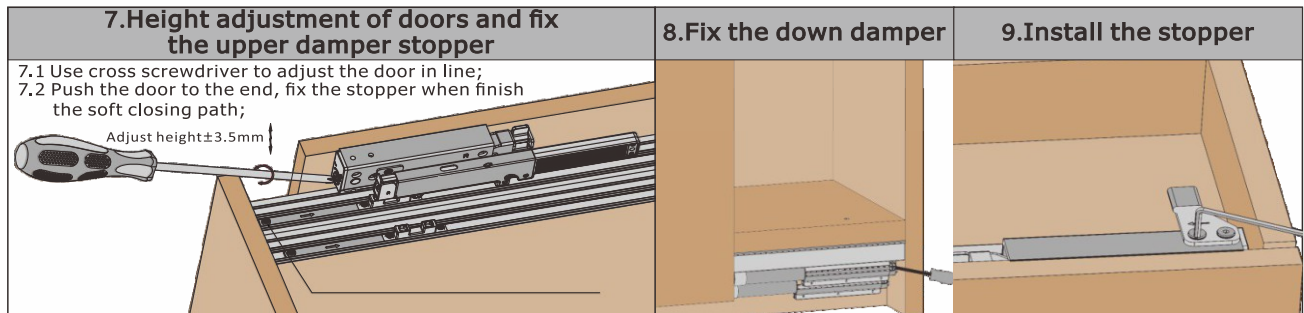


PDF

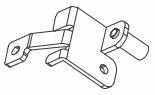
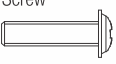

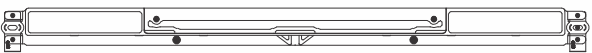
LIVSMART BROCHURE

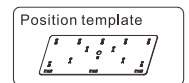
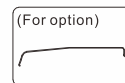
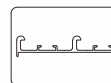
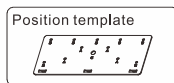
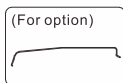
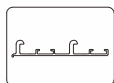


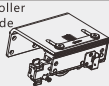
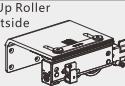







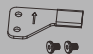






Accessories for Centro (Topper 16 - 46)

Stopper  Qty: 1	M4 x 16 Screw  Qty: 2	ST4 x 16 Cross Recessed Countersunk Head Tapping Screw  Qty: 4	Centro Soft Close Attachment  Qty: 1
---	---	---	--

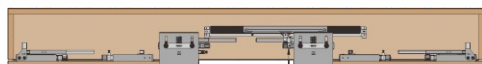


Accessory	QTY				Accessory	QTY				Accessory	QTY			
	single side soft close for 2 doors	double soft close for 2 doors	double soft close for 3 doors	full soft close for 3 doors		single side soft close for 2 doors	double soft close for 2 doors	double soft close for 3 doors	full soft close for 3 doors		single side soft close for 2 doors	double soft close for 2 doors	double soft close for 3 doors	full soft close for 3 doors
Left Up Roller For Outside Door 	1	1	1	1	Right Up Roller For Outside Door 	1	1	1	1	Up Damper 	2	4	4	6
Left Up Roller For Inside Door 	1	1	2	2	Right Up Roller For Inside Door 	1	1	2	2	Down Damper 	2	4	4	4
Down Roller For Outside Door 	2	2	2	2	Down Roller For Inside Door 	2	2	4	4	Stopper 	2	4	4	4
Stopper 	1	1	2	2	Anti-collide stopper 	0	0	0	1	St4x16 Cross Recessed Flat Head Tapping Screw 	40	40	60	60

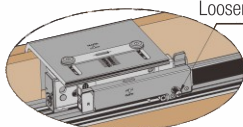
HI SLIDE TOPPER 16-46

CENTRO INSTALLATION INSTRUCTION

Installation Instruction



Remove screw:

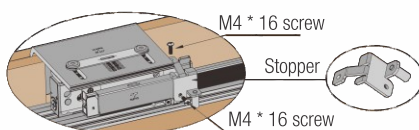


Loosen the screw: Stopper on right hand of middle door

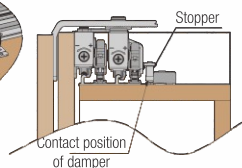
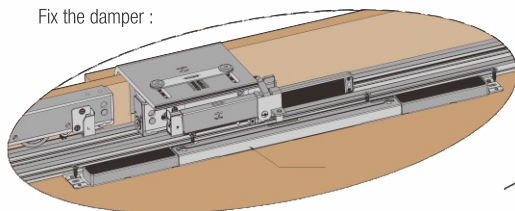
1. Remove screw M4 * which is fixing on the damper of right outer door runner

Fix the stopper

2. Installation the stopper by fixing M4*16 screw



Fix the damper :



3. Installation the stopper to the contact position of damper, adjust the middle door to the middle position, then fixing the damper by screw.