

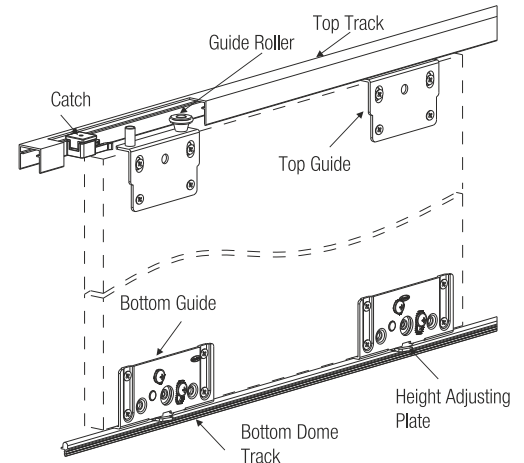
HI SLIDE - 90 (DOME TRACK)

Special Features

- For Flush Mounted Sliding Shutters.
- Bottom Dome Track for Smooth Rolling.
- Bottom Running Shutters upto 90Kgs.
- Special guide rollers provided to avoid voice while sliding.
- Load Capacity : 90 Kg door.
- System 32 Compatible.

Specifications

Item	Code Nos.	Finish
Hi Slide 90 Dome Track	HS-90-DT	BL
Al. Profile Track HS-90DT (for Top)	HS-90-TT-AS-2	AS
	HS-90-TT-3M-AS	
	HS-90-TT-AS-3	
Al. Profile Track HS-45DT/HS-90DT (for Bottom)	HS-45-DT-AS-2	AS
	HS-45-DT-3M-AS	
	HS-45-DT-AS-3	
Al. Profile Hi Slide 90 Twin Track - Top	HSDT-TTT-2	AS
	HSDT-TTT-3M	
	HSDT-TTT-3	
Al. Profile Hi Slide Dome Twin Track-Bottom (for HS-90 & HS-45)	HSDT-TDT-2	AS
	HSDT-TDT-3M	
	HSDT-TDT-3	



Fitting Instructions

1. Cut a Slot of 2mm wide & 6.5mm deep on bottom of Cabinet, & Insert the Dome track into the slot as shown in Fig. 2 for dimensions refer Fig.1.
2. Slide the catch into the top track from either sides as shown in Fig.3.
3. Fix top track onto the top inner face of the cabinet as shown in Fig. 4, for dimensions refer Fig.1.
4. Drill Ø52mm cavity 14mm deep on the bottom of the shutter as shown in Fig.5. & screw the Bottom guide.
5. Fit the Top guide onto the top side of the shutter as shown in Fig 1.
6. Engage the top side into the top track as shown in Fig. 6 & then rest the bottom guide into the Dome track as shown in Fig.7.
7. Loosen the M5 screw in Bottom guide & adjust the height to desired position as shown in Fig.8..

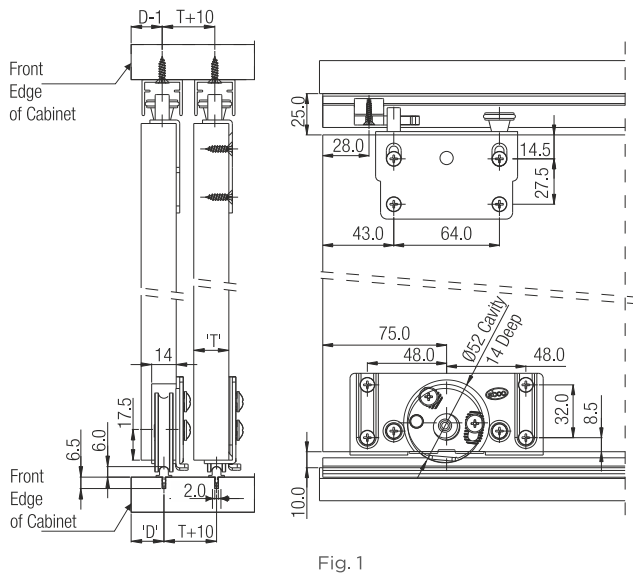


Fig. 1

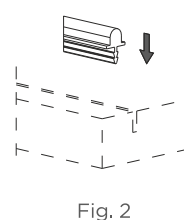


Fig. 2

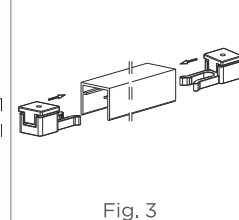


Fig. 3

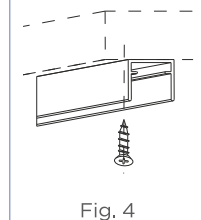


Fig. 4

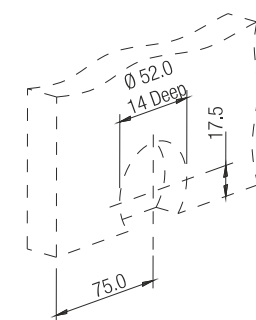


Fig. 5

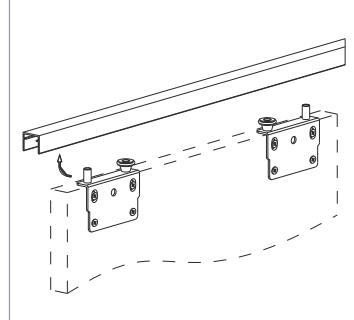


Fig. 6

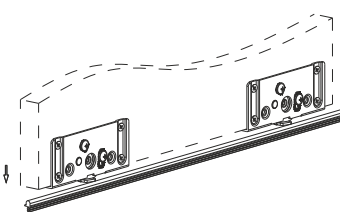


Fig. 7

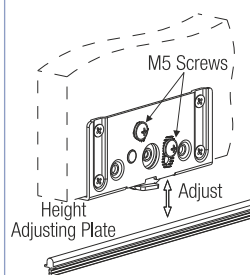
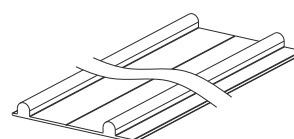


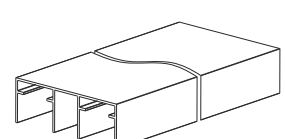
Fig. 8

Optional

For Shutter thickness upto 25mm.



Dome Twin Track Bottom



Twin Track Top