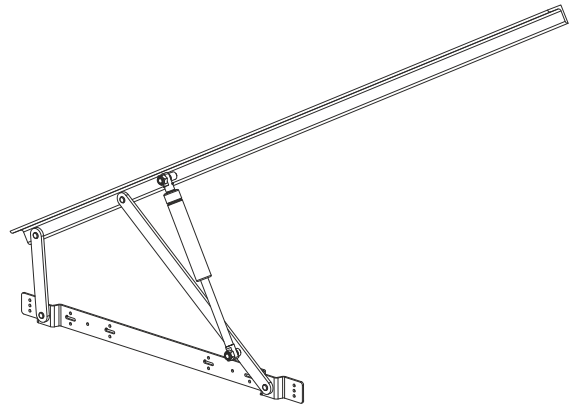


PRO LIFT BED FITTINGS EASY FIT - EXTENDED ARM HEAVY DUTY (W/O GAS LIFTS)



Special Features

- Ideal for storage under bed.
- 30° opening angle allows easy access.
- Easy to lift (with the weight of top board) with minimum force.
- Easy access as the gas lift keeps the bed top stay.
- Easy to Fit.
- Long brackets provided for better support to the bed platform.
- Finish : Anthracite.



Specifications

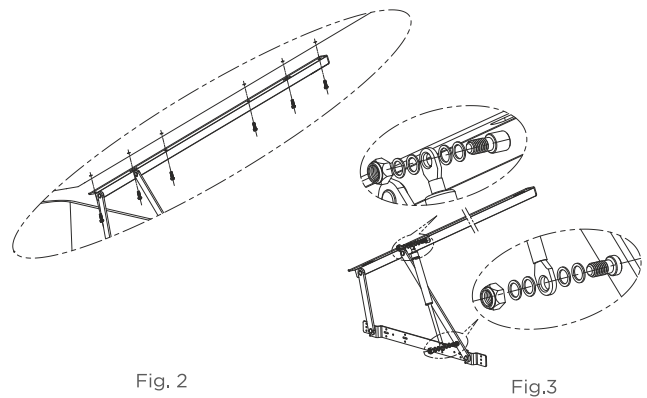
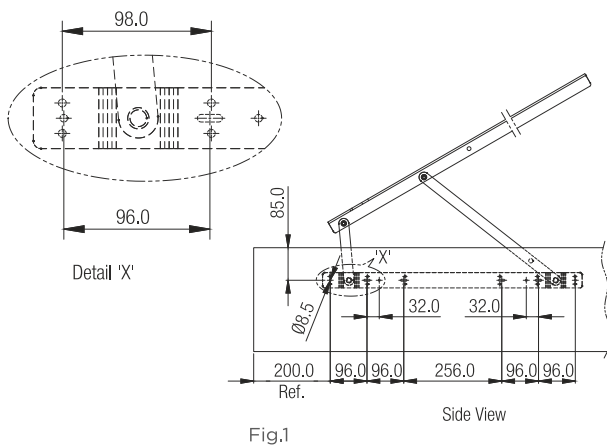
| Item | Code No. | Max. Force (Kgs.) | Recommended bed size | |
|--|--------------|-------------------|----------------------|---------------|
| | | | Width (Feet) | Length (Feet) |
| Pro-Lift Bed Fitting Easy Fit - Extended Arm Heavyduty | PLBF-EF-E-HD | -- | -- | -- |
| Gas Lift 1750N | PLBF-175C-HD | 175 | 5 to 6 feet | 6 to 6.5 feet |
| Gas Lift 2000N | PLBF-200C-HD | 200 | | |

Fitting Instructions

1. Fit the Fix Brackets on bed frame as per given dimensions (Refer Fig.1) without the gas spring fitted.
2. Now fix the bed platform to the top brackets (Refer Fig. 2).
3. Lastly fit gas spring as shown in diagram (Refer Fig.3).

* Special Note:

Installation dimensions are only recommendation and will vary depending on type of construction design.



Caution

- Gas springs used are highly pressured, do not dismantle or damage and do not expose to heat or fire.
- Ensure that the top bed is locked properly with the bed frame.
- Do not tighten nut fully, Gas Spring should be able to rotate.

Different types of Applications (options)

