



## ALUMINIUM HANDLES & KNOBS

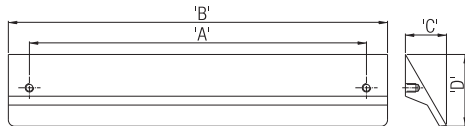
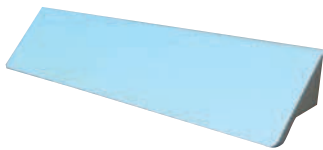


### Special Features

- Variety of designs to select from.
- Ergonomically designed for good grip.
- Available in different lengths as per system - 32.
- Various finishes to suit your furniture.

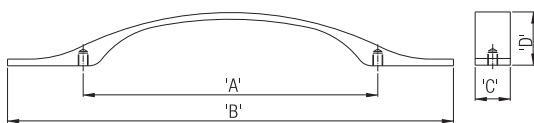


### Aluminium Handle- A



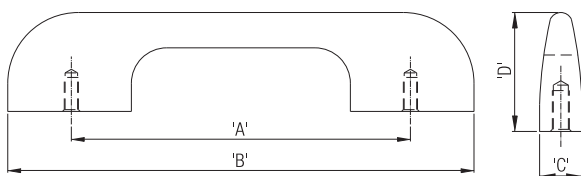
| Item               | Code Nos. | Finish          | 'A' | 'B' | 'C' | 'D' |
|--------------------|-----------|-----------------|-----|-----|-----|-----|
| Aluminium Handle-A | AAH - 160 | Anodized Silver | 160 | 180 | 19  | 35  |
|                    | AAH - 192 |                 | 192 | 212 | 19  | 35  |
|                    | AAH - 256 |                 | 256 | 276 | 19  | 35  |
|                    | AAH - 320 |                 | 320 | 340 | 19  | 35  |

### Aluminium Handle- B



| Item               | Code Nos.  | Finish         | 'A' | 'B' | 'C' | 'D' |
|--------------------|------------|----------------|-----|-----|-----|-----|
| Aluminium Handle-B | BAH 128 SF | Special Finish | 128 | 197 | 20  | 24  |
|                    | BAH 160 SF |                | 160 | 229 | 20  | 24  |
|                    | BAH 224 SF |                | 224 | 293 | 20  | 24  |

### Aluminium Handle - C



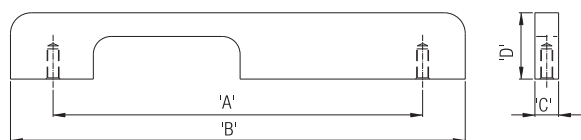
| Item               | Code Nos.    | Finish         | 'A' | 'B' | 'C' | 'D' |
|--------------------|--------------|----------------|-----|-----|-----|-----|
| Aluminium Handle-C | CAH - 96 SF  | Special Finish | 96  | 132 | 10  | 28  |
|                    | CAH - 160 SF |                | 160 | 196 | 10  | 28  |
|                    | CAH - 192 SF |                | 192 | 228 | 10  | 28  |
|                    | CAH - 320 SF |                | 320 | 356 | 10  | 28  |



## ALUMINIUM HANDLES & KNOBS

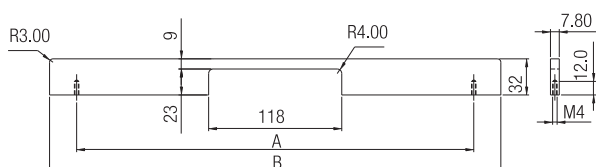


### Aluminium Handle - C1



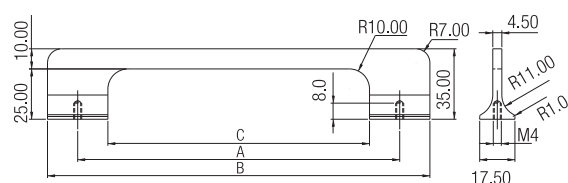
| Item                | Code Nos.  | Finish | 'A' | 'B' | 'C' | 'D' |
|---------------------|------------|--------|-----|-----|-----|-----|
| Aluminium Handle-C1 | C1AH - 160 | Silver | 160 | 180 | 8   | 30  |
|                     | C1AH - 192 |        | 192 | 212 | 8   | 30  |
|                     | C1AH - 224 |        | 224 | 244 | 8   | 30  |
|                     | C1AH - 288 |        | 288 | 308 | 8   | 30  |

### Aluminium Handle- C2



| Item                | Code Nos.   | Finish | 'A' | 'B' |
|---------------------|-------------|--------|-----|-----|
| Aluminium Handle-C2 | C2AH 224 AB | AB     | 224 | 272 |
|                     | C2AH 288 AB |        | 288 | 336 |
|                     | C2AH 352 AB |        | 352 | 400 |
|                     | C2AH 224 AC | AC     | 224 | 272 |
|                     | C2AH 288 AC |        | 288 | 336 |
|                     | C2AH 352 AC |        | 352 | 400 |
|                     | C2AH 224 CP | CP     | 224 | 272 |
|                     | C2AH 288 CP |        | 288 | 336 |
|                     | C2AH 352 CP |        | 352 | 400 |
|                     | C2AH 224 AS | AS     | 224 | 272 |
|                     | C2AH 288 AS |        | 288 | 336 |
|                     | C2AH 352 AS |        | 352 | 400 |

### Aluminium Handle- C3



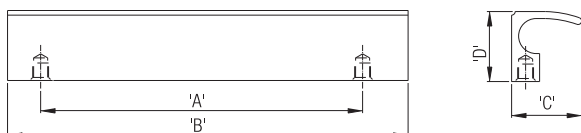
| Item                | Code Nos.   | Finish | 'A' | 'B' | 'C' |
|---------------------|-------------|--------|-----|-----|-----|
| Aluminium Handle-C3 | C3AH 160 CP | CP     | 160 | 190 | 130 |
|                     | C3AH 224 CP |        | 224 | 254 | 194 |
|                     | C3AH 160 AB | AB     | 160 | 190 | 130 |
|                     | C3AH 224 AB |        | 224 | 254 | 194 |
|                     | C3AH 160 AC | AC     | 160 | 190 | 130 |
|                     | C3AH 224 AC |        | 224 | 254 | 194 |



## ALUMINIUM HANDLES & KNOBS

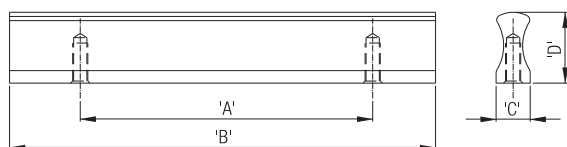


### Aluminium Handle - G



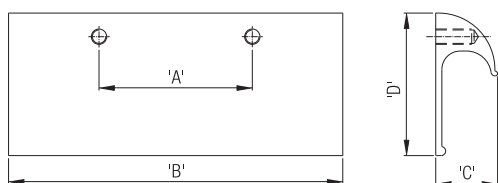
| Item                | Code Nos.  | Finish         | 'A' | 'B' | 'C' | 'D'  |
|---------------------|------------|----------------|-----|-----|-----|------|
| Aluminium Handle -G | GAH - 32   | Silver         | 32  | 50  | 20  | 19.5 |
|                     | GAH - 64   |                | 64  | 90  | 20  | 19.5 |
|                     | GAH - 96   |                | 96  | 120 | 20  | 19.5 |
|                     | GAH - 160  |                | 160 | 200 | 20  | 19.5 |
|                     | GAH - 224  |                | 224 | 300 | 20  | 19.5 |
|                     | GAH - 288  |                | 288 | 350 | 20  | 19.5 |
|                     | GAH 96 SF  | Special Finish | 96  | 120 | 20  | 19.5 |
|                     | GAH 160 SF |                | 160 | 200 | 20  | 19.5 |
|                     | GAH 224 SF |                | 224 | 300 | 20  | 19.5 |

### Aluminium Handle - I



| Item                | Code Nos.  | Finish         | 'A' | 'B' | 'C' | 'D' |
|---------------------|------------|----------------|-----|-----|-----|-----|
| Aluminium Handle -I | IAH - 32   | Silver         | 32  | 50  | 9   | 17  |
|                     | IAH - 64   |                | 64  | 90  | 9   | 17  |
|                     | IAH - 96   |                | 96  | 120 | 9   | 17  |
|                     | IAH - 160  |                | 160 | 200 | 9   | 17  |
|                     | IAH - 224  |                | 224 | 300 | 9   | 17  |
|                     | IAH 32 SF  | Special Finish | 32  | 50  | 9   | 17  |
|                     | IAH 64 SF  |                | 64  | 90  | 9   | 17  |
|                     | IAH 96 SF  |                | 96  | 120 | 9   | 17  |
|                     | IAH 160 SF |                | 160 | 200 | 9   | 17  |
|                     | IAH 224 SF |                | 224 | 300 | 9   | 17  |

### Aluminium Handle- J

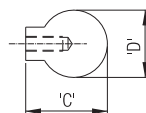
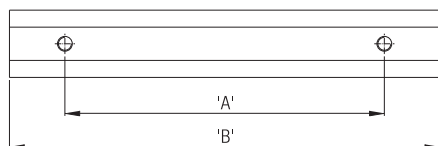


| Item                | Code Nos.    | Finish         | 'A' | 'B' | 'C'  | 'D' |
|---------------------|--------------|----------------|-----|-----|------|-----|
| Aluminium Handle -J | JAH - 32     | Silver         | 32  | 50  | 19.5 | 43  |
|                     | JAH - 64     |                | 64  | 90  | 19.5 | 43  |
|                     | JAH - 96     |                | 96  | 120 | 19.5 | 43  |
|                     | JAH - 160    |                | 160 | 200 | 19.5 | 43  |
|                     | JAH - 224    |                | 224 | 300 | 19.5 | 43  |
|                     | JAH - 96 SF  | Special Finish | 96  | 120 | 19.5 | 43  |
|                     | JAH - 160 SF |                | 160 | 200 | 19.5 | 43  |
|                     | JAH - 224 SF |                | 224 | 300 | 19.5 | 43  |



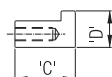
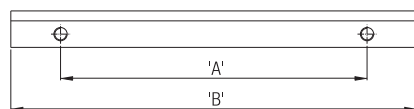
## ALUMINIUM HANDLES & KNOBS

### Aluminium Handle- K



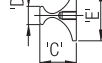
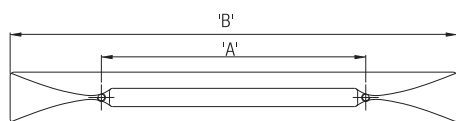
| Item                | Code Nos.    | Finish         | 'A' | 'B' | 'C'  | 'D' |
|---------------------|--------------|----------------|-----|-----|------|-----|
| Aluminium Handle -K | KAH - 32     | Silver         | 32  | 50  | 19.5 | 13  |
|                     | KAH - 64     |                | 64  | 90  | 19.5 | 13  |
|                     | KAH - 96     |                | 96  | 120 | 19.5 | 13  |
|                     | KAH - 160    |                | 160 | 200 | 19.5 | 13  |
|                     | KAH - 224    |                | 224 | 300 | 19.5 | 13  |
|                     | KAH - 96 SF  | Special Finish | 96  | 120 | 19.5 | 13  |
|                     | KAH - 160 SF |                | 160 | 200 | 19.5 | 13  |
|                     | KAH - 224 SF |                | 224 | 300 | 19.5 | 13  |

### Aluminium Handle - L



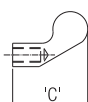
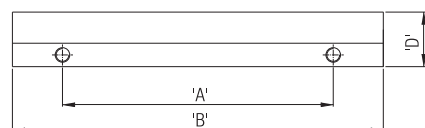
| Item                 | Code Nos.  | Finish         | 'A' | 'B' | 'C' | 'D' |
|----------------------|------------|----------------|-----|-----|-----|-----|
| Aluminium Handle - L | LAH 96 SF  | Special Finish | 96  | 128 | 17  | 11  |
|                      | LAH 160 SF |                | 160 | 192 | 17  | 11  |
|                      | LAH 224 SF |                | 224 | 256 | 17  | 11  |

### Aluminium Handle - M



| Item                 | Code Nos.  | Finish | 'A' | 'B' | 'C' | 'D' | 'E' |
|----------------------|------------|--------|-----|-----|-----|-----|-----|
| Aluminium Handle - M | MAH 160 AB | AB     | 160 | 250 | 18  | 9   | 25  |
|                      | MAH 224 AB |        | 224 | 320 | 18  | 9   | 25  |
|                      | MAH 160 CP | CP     | 160 | 250 | 18  | 9   | 25  |
|                      | MAH 224 CP |        | 224 | 320 | 18  | 9   | 25  |

### Aluminium Handle - R



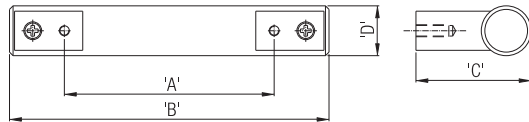
| Item                 | Code Nos.  | Finish         | 'A' | 'B' | 'C' | 'D' |
|----------------------|------------|----------------|-----|-----|-----|-----|
| Aluminium Handle - R | RAH 96 SF  | Special Finish | 96  | 128 | 21  | 15  |
|                      | RAH 160 SF |                | 160 | 192 | 21  | 15  |
|                      | RAH 224 SF |                | 224 | 256 | 21  | 15  |



## ALUMINIUM HANDLES & KNOBS

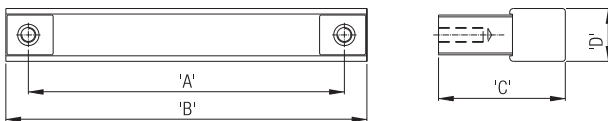


### Aluminium Handle - RD



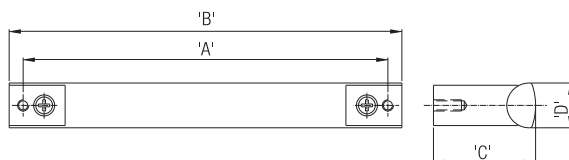
| Item                  | Code Nos.  | Finish         | 'A' | 'B' | 'C' | 'D' |
|-----------------------|------------|----------------|-----|-----|-----|-----|
| Aluminium Handle - RD | RDH 160 SF | Special Finish | 160 | 198 | 39  | 18  |
|                       | RDH 224 SF |                | 224 | 262 | 39  | 18  |
|                       | RDH 320 SF |                | 320 | 358 | 39  | 18  |

### Aluminium Handle - SQ



| Item                  | Code Nos.   | Finish         | 'A' | 'B' | 'C' | 'D' |
|-----------------------|-------------|----------------|-----|-----|-----|-----|
| Aluminium Handle - SQ | SQAH 160 SF | Special Finish | 160 | 176 | 37  | 16  |
|                       | SQAH 224 SF |                | 224 | 240 | 37  | 16  |
|                       | SQAH 320 SF |                | 320 | 336 | 37  | 16  |

### Aluminium Handle - SR

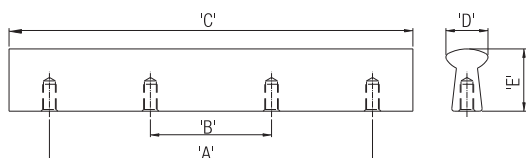
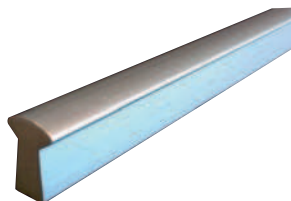


| Item                 | Code Nos.   | Finish | 'A' | 'B' | 'C'  | 'D' |
|----------------------|-------------|--------|-----|-----|------|-----|
| Aluminium Handle -SR | SRAH 224 AS | AS     | 224 | 234 | 36,5 | 16  |
|                      | SRAH 288 AS |        | 288 | 298 | 36,5 | 16  |
|                      | SRAH 352AS  |        | 352 | 362 | 36,5 | 16  |
|                      | SRAH 224 AC | AC     | 224 | 234 | 36,5 | 16  |
|                      | SRAH 288 AC |        | 288 | 298 | 36,5 | 16  |
|                      | SRAH 352 AC |        | 352 | 362 | 36,5 | 16  |



## ALUMINIUM HANDLES & KNOBS

### Aluminium Handle - Y



| Item                               | Code Nos.  | Finish | 'A' | 'B' | 'C' | 'D'  | 'E'  |
|------------------------------------|------------|--------|-----|-----|-----|------|------|
| Aluminium Handle -Y                | YAH 96     | AS     | 96  | --- | 120 | 12.5 | 18.5 |
|                                    | YAH 160    |        | 160 | --- | 200 | 12.5 | 18.5 |
|                                    | YAH 224    |        | 224 | --- | 300 | 12.5 | 18.5 |
|                                    | YAH 384    |        | 384 | 128 | 450 | 12.5 | 18.5 |
|                                    | YAH 512    |        | 512 | 192 | 600 | 12.5 | 18.5 |
|                                    | YAH 800    |        | 800 | 288 | 900 | 12.5 | 18.5 |
| Aluminium Handle -Y Special Finish | YAH 96 SF  | SF     | 96  | --- | 120 | 12.5 | 18.5 |
|                                    | YAH 160 SF |        | 160 | --- | 200 | 12.5 | 18.5 |
|                                    | YAH 224 SF |        | 224 | --- | 300 | 12.5 | 18.5 |
|                                    | YAH 384 SF |        | 384 | 128 | 450 | 12.5 | 18.5 |
|                                    | YAH 512 SF |        | 512 | 192 | 600 | 12.5 | 18.5 |
|                                    | YAH 800 SF |        | 800 | 288 | 900 | 12.5 | 18.5 |
| Aluminium Handle - Y Metallic Blue | YAH 96 MB  | MB     | 96  | --- | 120 | 12.5 | 18.5 |
|                                    | YAH 160 MB |        | 160 | --- | 200 | 12.5 | 18.5 |
|                                    | YAH 224 MB |        | 224 | --- | 300 | 12.5 | 18.5 |
|                                    | YAH 384 MB |        | 384 | 128 | 450 | 12.5 | 18.5 |
|                                    | YAH 512 MB |        | 512 | 192 | 600 | 12.5 | 18.5 |
|                                    | YAH 800 MB |        | 800 | 288 | 900 | 12.5 | 18.5 |

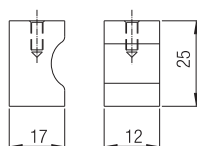
### Aluminium Knob



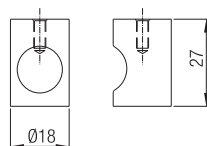
KNB 11 SF



KNB 32 SF



KNB 11 SF



KNB 32 SF

| Item           | Code Nos. | Finish         |
|----------------|-----------|----------------|
| Aluminium Knob | KNB 11 SF | Special Finish |
|                | KNB 32 SF |                |