

DOOR CLOSER - CONCEALED

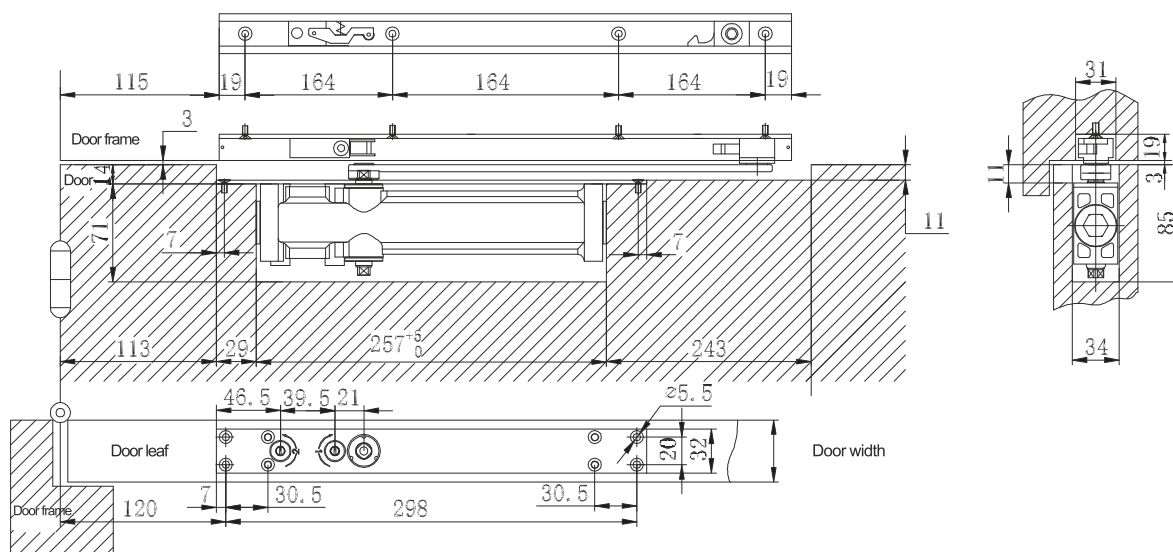
Special Features

- Hold open facility.
- Hold open angle 90° to 160°.
- Latching and Closing speed adjust valve.
- Right hand and left hand opening door.
- Door opening angle of 180° max.
- 5,00,000 cycles tested.
- 5 years warranty.

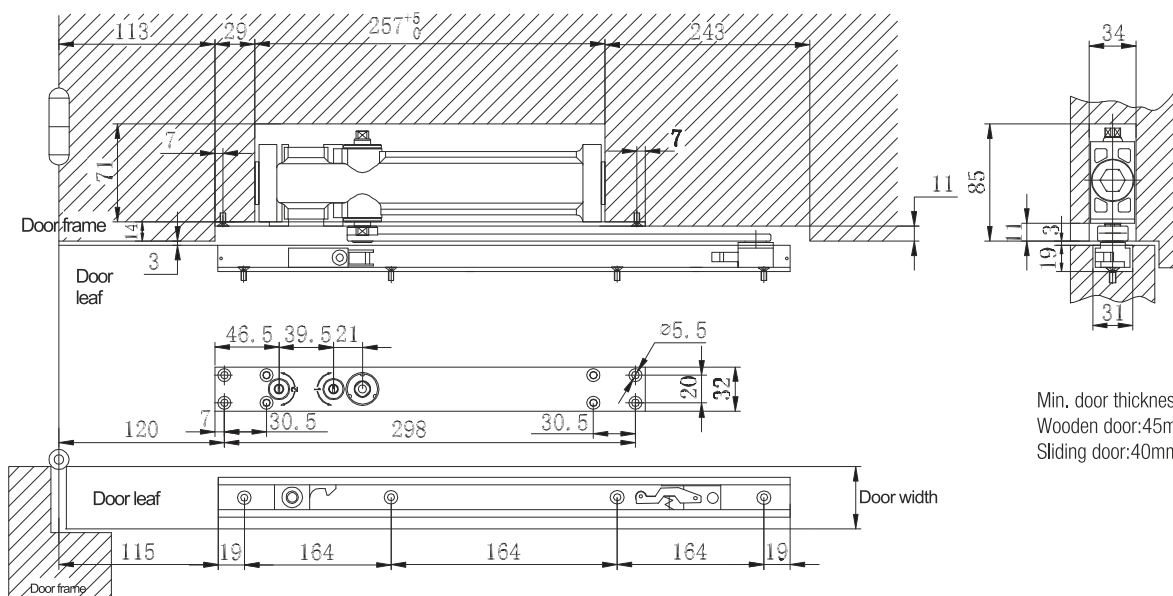


Specifications

Item Code No.	Hold Open Facility	Fire Rated	Latching and Closing Speed Adjust Valve	Technical Parameter			Finish
				Door Width	Door Weight	Door Opening Angle	
DC1001	Yes	Yes	Available	850mm	65kg	180°	SL
DC1002	Yes	Yes	Available	1000mm	85kg	150°	



Top jamb mounting of left hand(LH)-view from push side

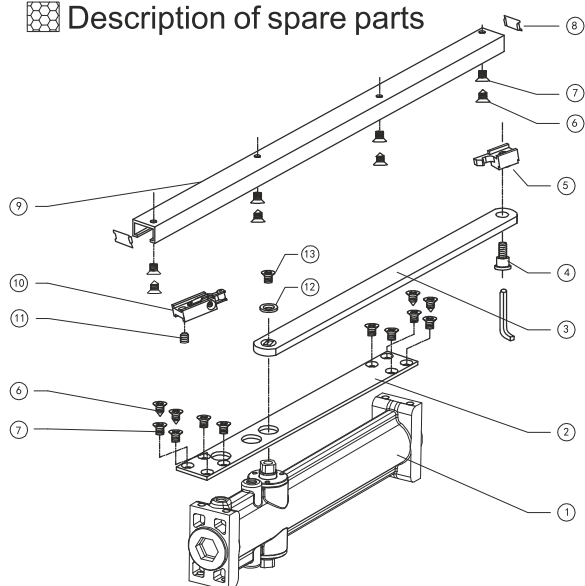


Min. door thickness:
Wooden door: 45mm
Sliding door: 40mm

DOOR CLOSER - CONCEALED



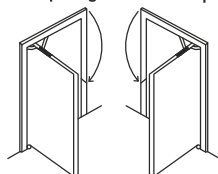
Description of spare parts



NO	Description	Qty
①	Body	1
②	Fixing plate	1
③	Main arm	1
④	Fixing bolt	1
⑤	Hold open hook	1
⑥	ST4.8×25	8
⑦	M5×15	12
⑧	Slide track end cover	2
⑨	Slide track	1
⑩	Hold open mouldle	1
⑪	Hexagon set screw	1
⑫	Cushion ring	1
⑬	M6×12	1

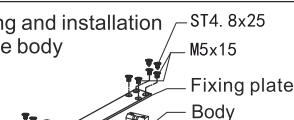
Right side opening

Left side opening



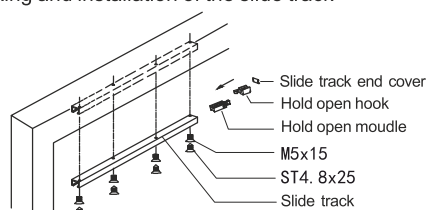
Installation Steps (suit for left/right side opening use)

① Fixing and installation of the body

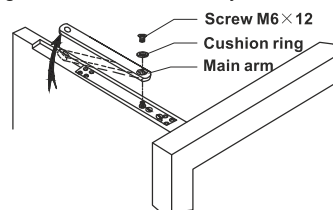


CAUTION: Please close fully the regulating valves (Turning to the end clockwise) opposite to the side of the fixing plate after mounting of the fixing plate.
The screw hole for the M5×0.8 screws should be chamfer.

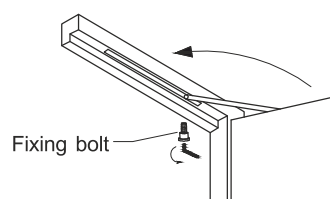
② Fixing and installation of the slide track



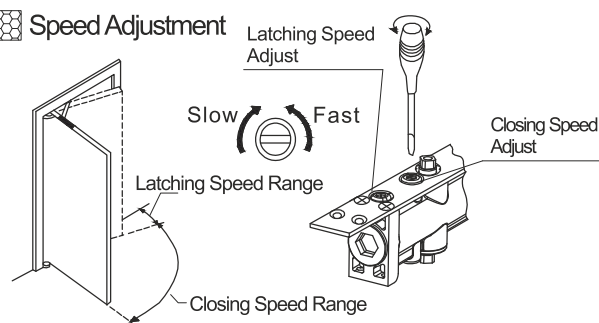
③ Combining the main arm and body



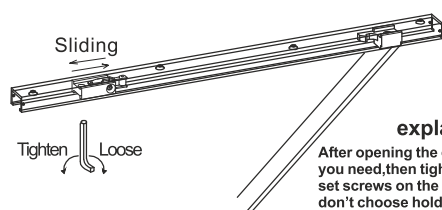
④ Combining the main arm and the slider in the track



Speed Adjustment



Open Angle (Hold Open Adjustment)



explanation:

After opening the door to the angle which you need, then tighten the hexagon socket set screws on the hold open mouldle. If you don't choose hold open, then loose the screw.

⑤ Opening angle and closing speed adjustment

