

# DOOR CLOSER - 301 with HOLD OPEN

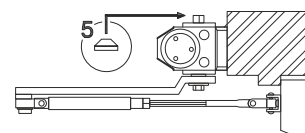
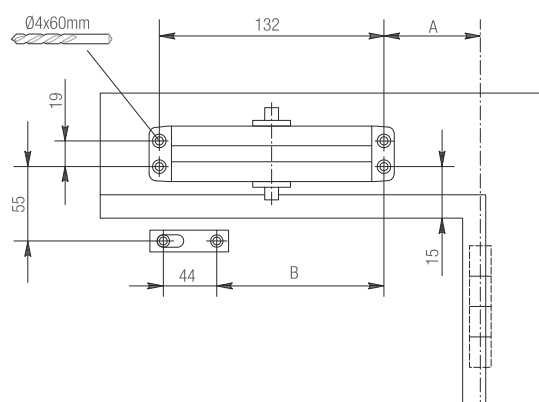
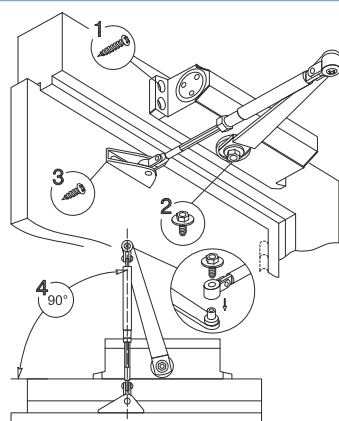
## Special Features

- Hold open facility.
- Hold open angle 90° to 160°.
- Latching and Closing speed adjust valve.
- Right hand and left hand opening door.
- Door width 900-1200mm.
- Door weight 105kgs.
- Door opening angle of 180° max.
- 5,00,000 cycles tested.
- 3 years warranty.

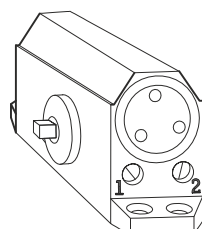
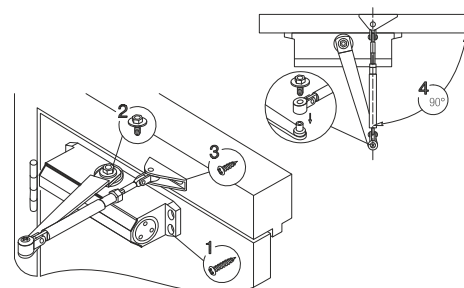
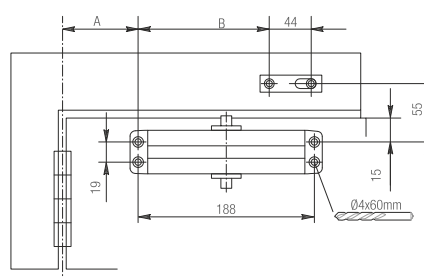
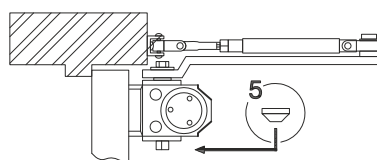


## Specifications

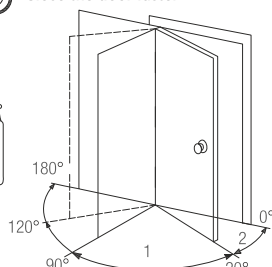
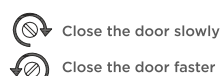
Item Code No.	Body Size in mm			Hold Open Facility	Latching and Closing Speed Adjust Valve	Technical Parameter		Finish
	L	W	H			Door Width	Door Weight	
DC301	206	45	67	Yes	Available	900 - 1200mm	105kgs	SL



Model	A(mm)	B(mm)	Opening angle
DC 301 (W)	90	130	180°
DC 301 (D)	70	130	90°

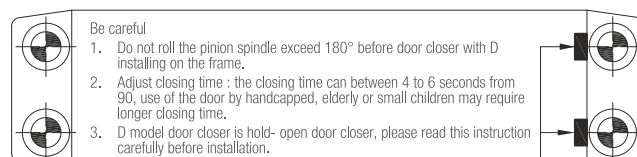


1 - control 180-20 closing speed  
2 - control 20-0 latching speed



Warning users:

1. Do not turn speed regulating valve exceed the maximum turns, avoid oil leakage, it can lead to run instability.
2. Let the door closer close by itself, please do not add external forces, or it may damage the door closer.
3. Please read this instruction carefully before installation, we won't be responsible for any results which are caused by the wrong mounting ways.



Speed regulating valves toward hinge.