



# TONGUE HANDLE

## Special Features

- Designed for inset drawers.
- System-32 compatible.
- Available in 4 colours and 2 sizes.

## Specifications

Code Nos.	'A' in mm	'B' in mm	Finish
TOH32-1	50,0	32,0	BL/BR/ WM/SL
TOH64-1	82,0	64,0	

## Fitting Instructions

1. Make slots in front facia of drawer as shown in diagram (Refer Fig.1). For overlay drawers make extra slot vertically inside face of front facia to avoid the gap while closing.
2. Screw the Tongue handle to the front facia. (Refer Fig.2).

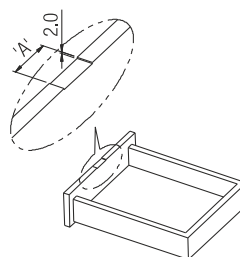
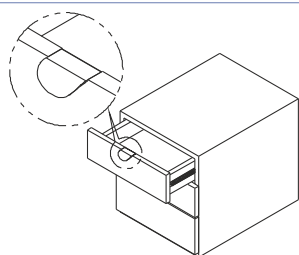
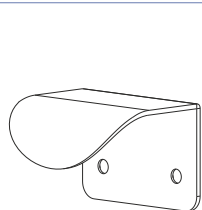
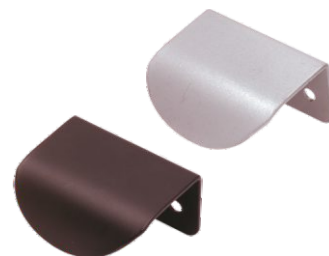


Fig1

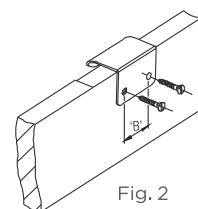


Fig. 2