



SLEEK TELESCOPIC DRAWER SLIDE - 45KG (SS304)



Special Features

- Manufactured out of Stainless Steel 304 grade.
- Precision ball bearing with full extension of drawer.
- Direct fitting from front.
- Removable drawer with Latch.
- System 32 installation.
- Load capacity 45 Kgs.



Specifications

Code Nos.	Length (mm)	Extension (mm)	Gap/Side (mm)	Max. Load (kgs)	Finish
STDS 40-45SS	400	405	12.7 to 13.0	45	SS 304
STDS 45-45SS	450	458			
STDS 50-45SS	500	520			
STDS 55-45SS	550	570			

Fitting Instructions

1. To install Sleek Telescopic Drawer Slide (SS304), 12.7 to 13.0 mm side gap per side is required between cabinet and drawer (Refer Fig. 1).
2. Depress latch and remove the Inner slide (Refer Fig. 2).
3. Fit Outer (Fixed) slide on to the inside of the cabinet, access to holes can be got through slots in Intermediate slide.
4. Slides should be fitted parallel and screws tightened fully to avoid gaps.
5. Fit Inner slide on to the outside of the drawer.
6. Now slide the drawer with inner slide fitted on to the intermediate slides on the cabinet till the latch will automatically engage.

DRILLING DIAGRAM FOR CABINET

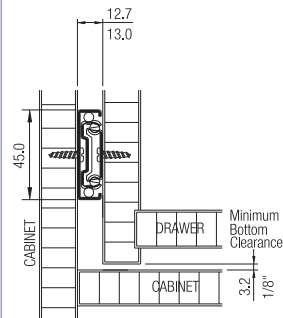
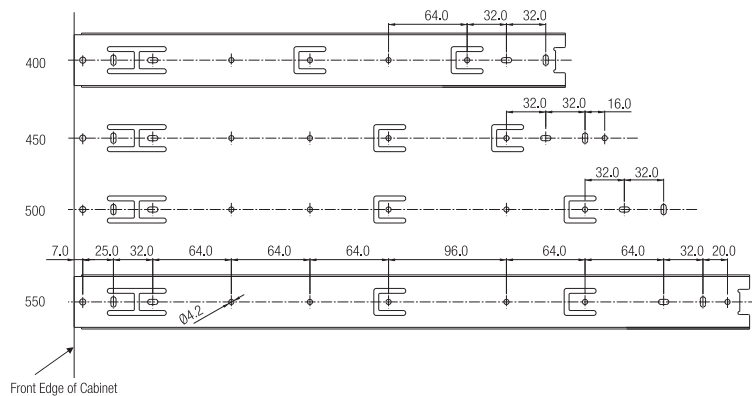


Fig. 1

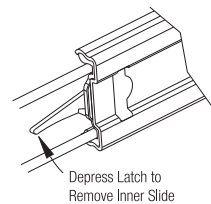
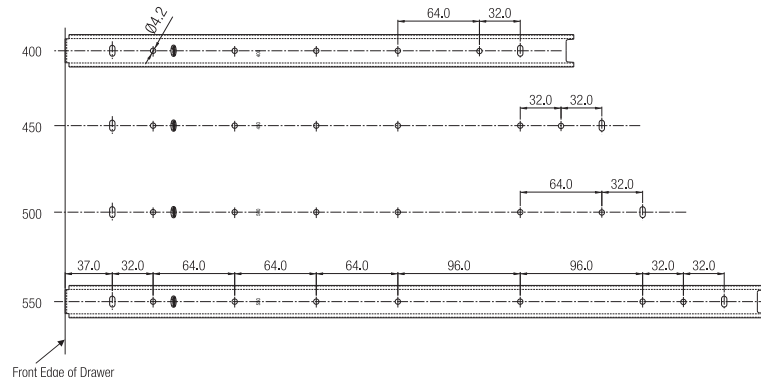


Fig. 2

DRILLING DIAGRAM FOR DRAWER



Caution

- For efficiency and durability.
- Strictly maintain 12.7 to 13.0 mm side gap.
 - Fit slides parallel and at equal heights.
 - Do not apply paint or polish.
 - Do not let saw dust enter into the slides.