



## Special Features

- Push type installation.
- Self and soft closing function make the drawer close safely, without effect of weight.
- No need of tool to install and uninstall the drawer.
- Height adjustable ( $\pm 2$ mm) drawer by turning the wheel in the Release Clip.
- Saves space due to reduced side gap.
- 'System 32' compatible.
- Load capacity : 30 kgs.
- Cr-free galvanized steel.



## Specifications

Code Nos.	Drawer Length (A)mm	Min. Cabinet Depth mm	Hole Distance (B)mm	Gap/ Side (mm)	Max. Load (Kgs.)	Finish
P-CDS-30-SC(I)	300	313	160	4.0	30	Galvanized
P-CDS-35-SC(I)	350	363	160			
P-CDS-40-SC(I)	400	413	256			
P-CDS-45-SC(I)	450	463	256			
P-CDS-50-SC(I)	500	513	288			
P-CDS-55-SC(I)	550	563	288			

## Fitting Instructions

1. Side panels of drawer should not exceed 16 mm thickness (Refer Fig.1).
2. Drill  $\varnothing 6$ mm hole at the rear of drawer to anchor the rear end of slides (Refer Fig. 1).
3. Fix the Mounting brackets of slide parallel and at equal height inside the cabinet leaving 6mm from the front edge of the cabinet as shown in Fig. 2.
4. Fix the Release clips under the drawer in front of the
5. facia as shown in Fig. 3.
6. Place the drawer horizontally on the slides, push towards the cabinet until the drawer gets locked automatically (Refer Fig. 4).
7. Drawers can be removed out by pressing both the release clips as shown in Fig. 5.
8. Drawer height can be adjusted by +2 mm by turning the wheel in the release clip (Refer Fig. 6).

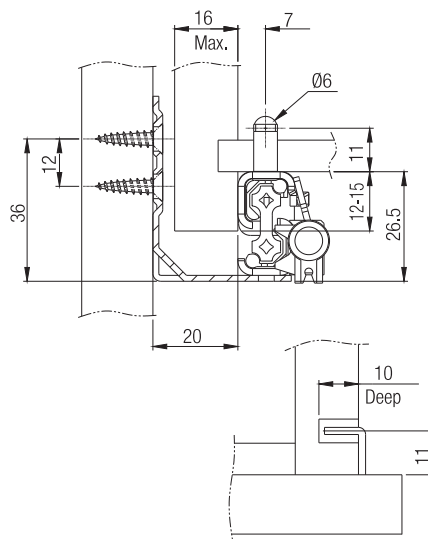
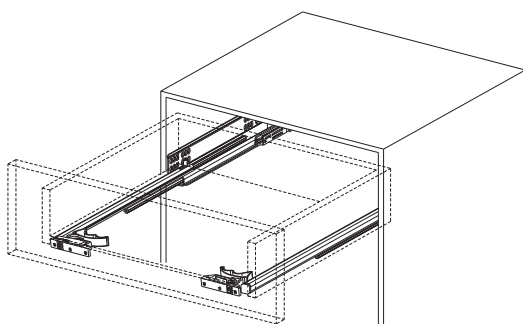


Fig. 1

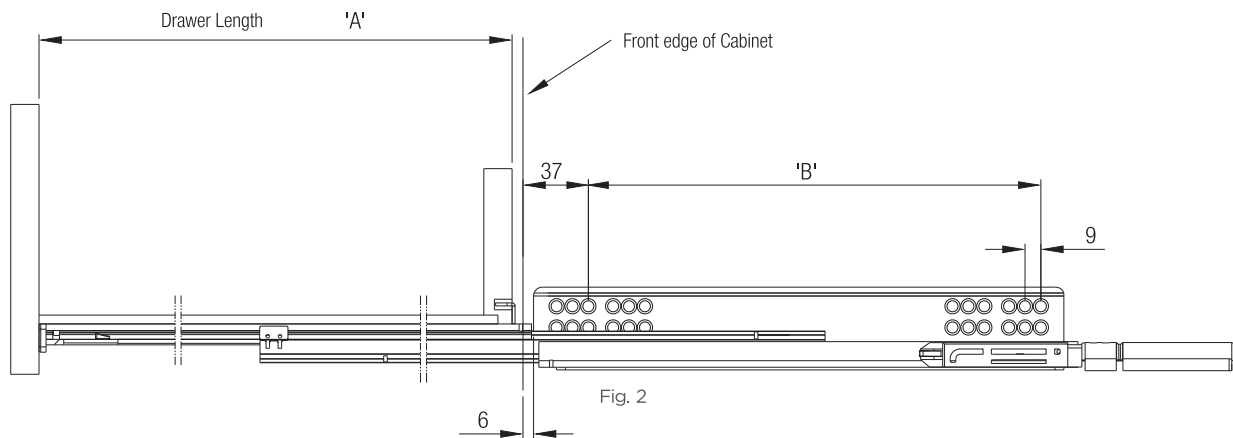


Fig. 2

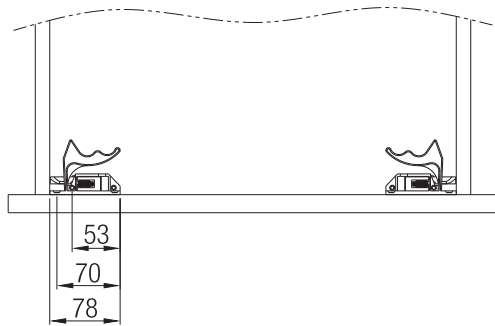


Fig. 3

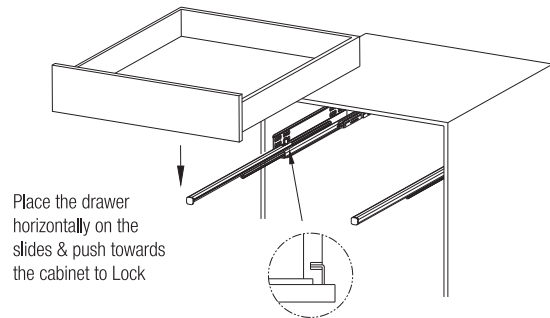


Fig. 4

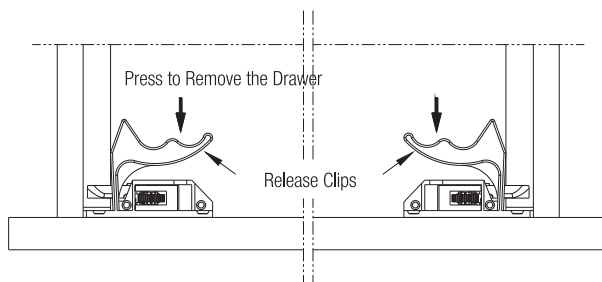


Fig. 5

±2mm height adjustment

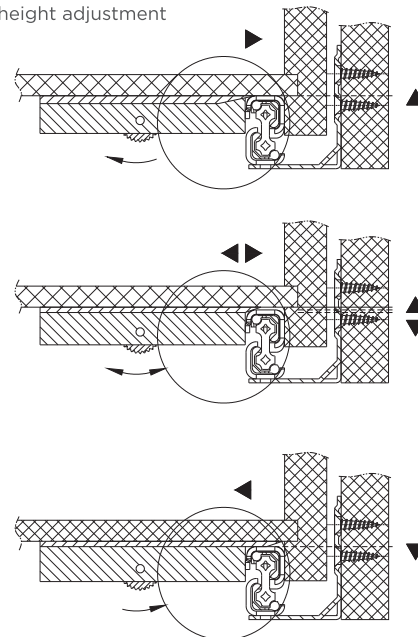


Fig. 6