



[Home](#) » [Pro - Motion Drawer System 120 - Slim 2](#)



Pro - Motion Drawer System 120 - Slim 2

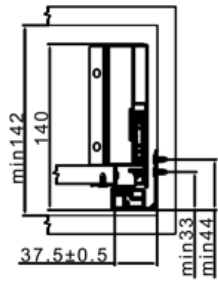
- New Pro - Motion Drawer System - S2 Series now available in 120mm height.
- Suitable for all types of applications including kitchens, wardrobe, living rooms and office furniture.
- Depth available: 450, 500 & 550mm.
- Drawer width can be designed freely with automatic error adjustment.
- Full extension with soft close.
- Weight capacity: 50Kgs.

Specifications

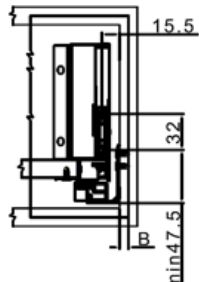
Model	Code	Size (mm)	Internally Usable Drawer Depth	Minimum Installation Depth of Drawers	Finish
Pro-Motion Drawer System 120- Slim 2	PMDS2-45-S2	450	424 mm	450 mm	White / Anthracite
	PMDS2-50-S2	500	474 mm	500 mm	
	PMDS2-55-S2	550	524 mm	550 mm	

Fitting Instructions

Inside Cabinet Dimension

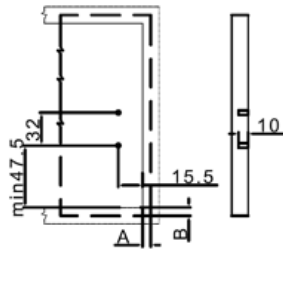


Front Panel Mounting Positions



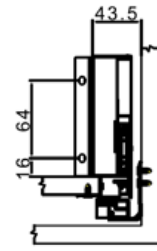
B Side overlay(user-defined)

Front Fixing Brackets Positions

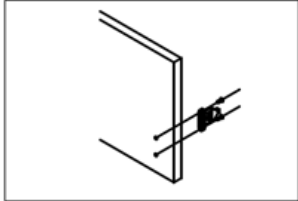


A.B Side overlay(user-defined)

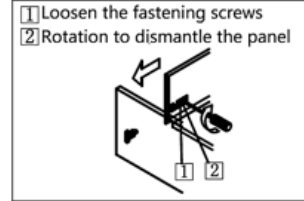
Back Panel Mounting Positions



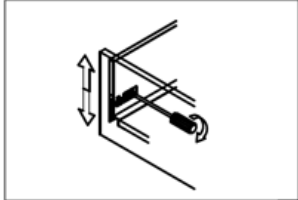
Front fixing brackets mounting



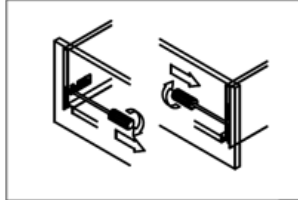
Front panel removing



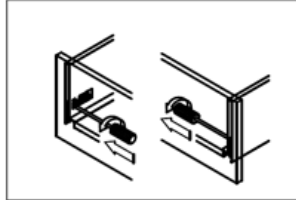
Front panel height adjustment: ±2mm



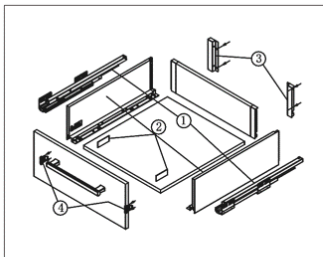
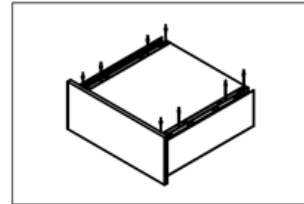
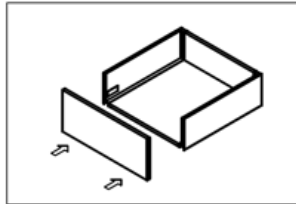
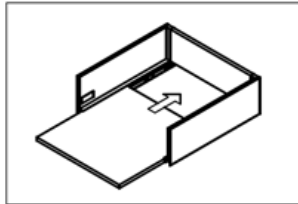
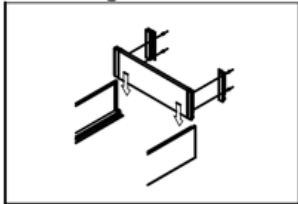
Front panel side adjustment: right1mm



Front panel side adjustment: left1mm

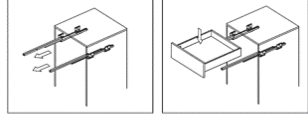


Mounting the drawer

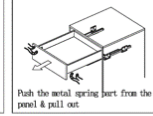


- 1. Guide Left/Right Length: 450mm, 500mm, 550mm
- 2. Drawer Side & Decorative Cap Left/Right Length: 450mm, 500mm, 550mm
- 3. Back connector Left / Right
- 4. Front connector Left / Right

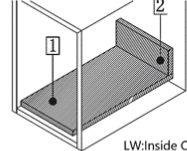
Installing the drawer



Removing the drawer

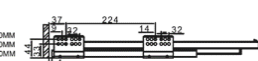


Technology pivot:
Bottom and Back Panel Measurement
16MM Density Panel



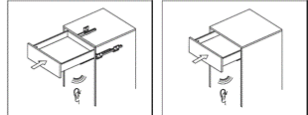
- 1 Bottom panel width=Inside Cabinet Width-75±0.5
Bottom panel length=Runner length-10MM
- 2 Back panel height= 100MM
Back panel width=Inside Cabinet Width-87±0.5

Runner Installation(mm)



Basic length:450/500/550

Function of the damper



Push the metal spring part from the panel & pull out