

SMART LADDER - 2 STEP Design Reg.: 210096

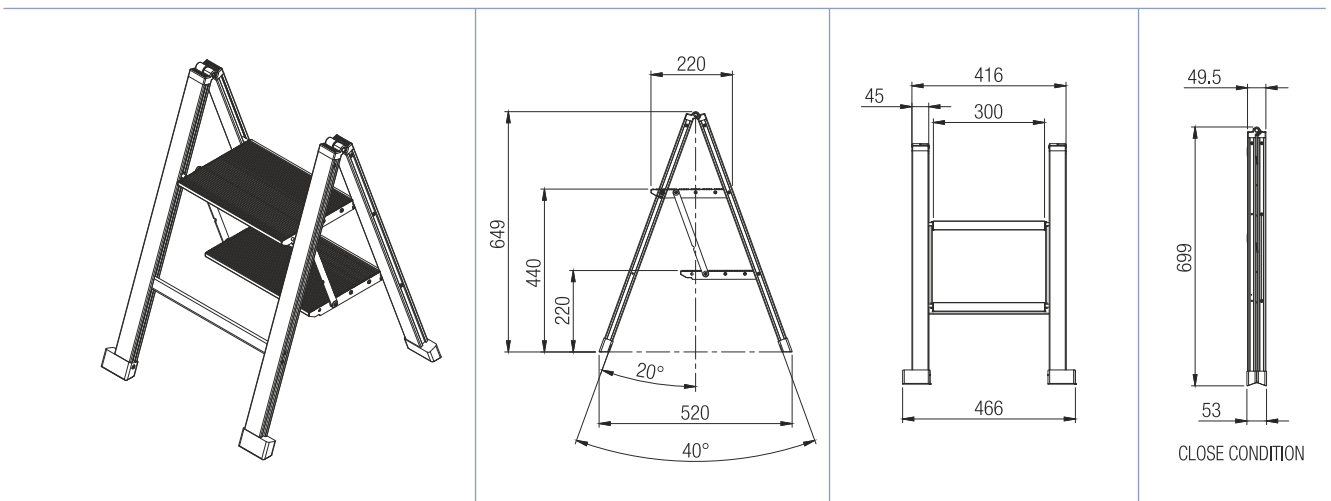


Special Features

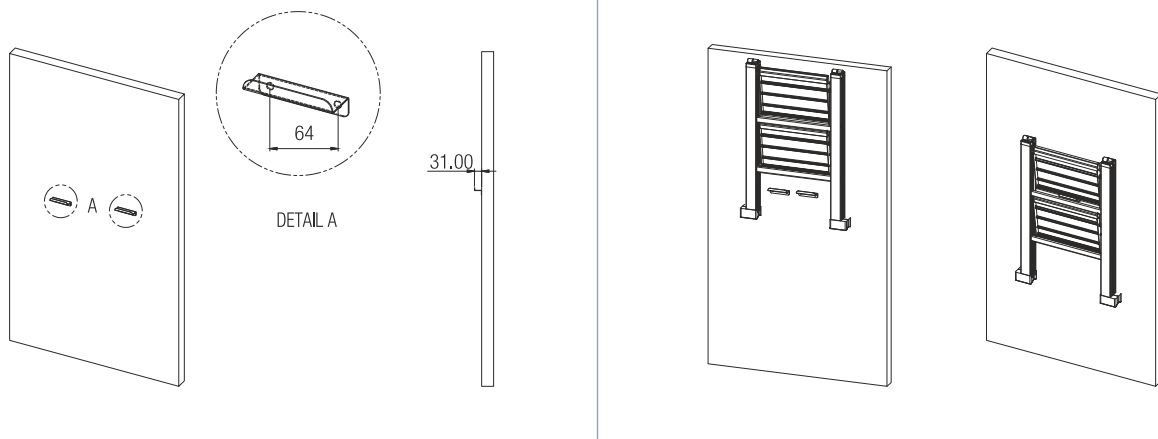
- Easy to use & store.
- Aluminium sections ensure light weight and strength.
- Load capacity :- 100 kg
- Open condition : 649 x 520 x 466mm
- Close condition : 669 x 466 x 53mm

Specifications

Code No.	Finish
SL-2	AS



SMART LADDER STEP 2 - VERTICAL HANGING



Caution

1. Ensure all four feet are on levelled surface when ladder is in open condition.
2. Keep your body between the side rails for safety and do not over reach.