

# PLINTH FITTINGS



## Special Features

- Made out of reinforced Glass filled Nylon.
- Models available with minimum shut height 75mm, 95mm, 105mm & 150mm.
- Adjustment of height - 25 mm
- Additional screw can be provided from below to prevent rotation.
- Skirting clip with bracket to attach skirting boards to the front of pedestal units.
- Load capability 150 Kgs. each.
- Finish : Black.

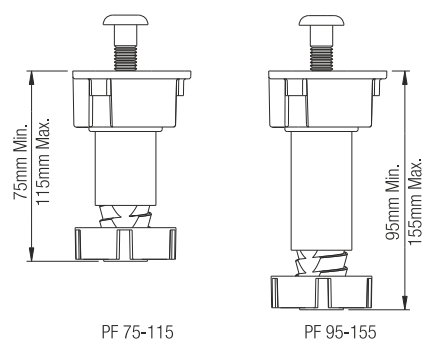
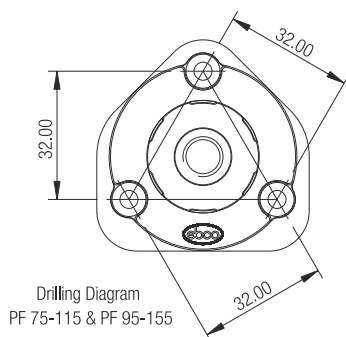
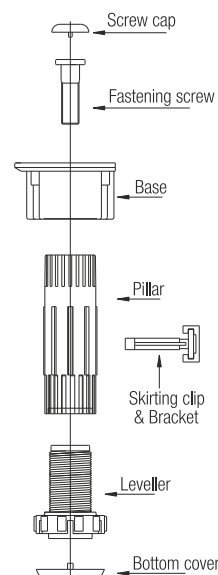
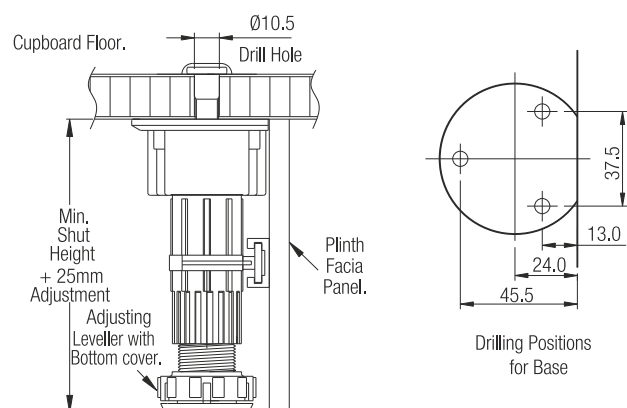


## Specifications

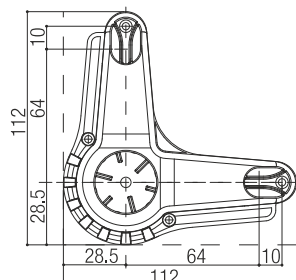
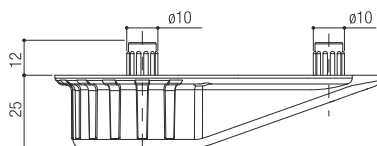
Item	Code Nos.	Minimum Shut Height	Range mm
Plinth Fittings (without screw)	PF75	75 mm	75 to 100
	PF75-115	75 mm	75 to 115
	PF105	105 mm	105 to 130
	PF95-155	95 mm	95 to 155
	PF150	150 mm	150 to 175
Plinth Screw with Cap	PFSC-1032	--	--
Skirting Clip with Bracket	PFSCB1	--	--
Skirting Clip	PFSCB2	--	--
Plinth Clip	PFSCA	--	--

## Fitting Instructions

1. The fastening screw for plinth adjusting foot is secured through a Ø10.5mm hole in the cupboard floor.



# PLINTH FITTING - TRIANGULAR W/O SCREW



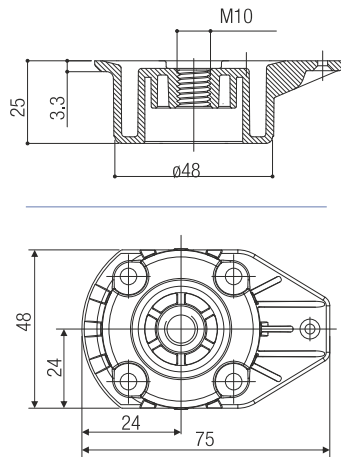
## Special Features

- Better stability with triangular base supporting vertical panel.
- Height adjustment legs with screw.
- Available in 100mm and 150mm heights.
- Load capacity: 460kgs.

## Specifications

Items	Code Nos.	Size	Finish
Plinth Fitting - Triangular Basew/o screw	PFT-100	100 mm	BL
	PFT-150	150 mm	

# PLINTH FITTING-OVAL BASE



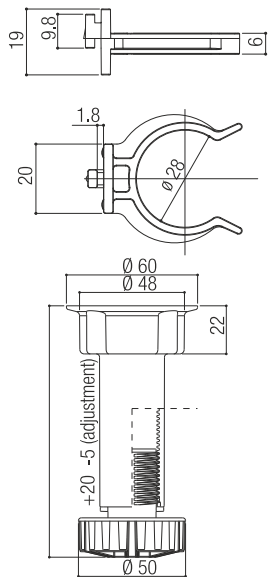
## Special Features

- Better stability with oval base supporting vertical panel.
- Height adjustment legs with screw.
- Available in 100mm and 150mm heights.
- Load capacity: 460kgs.

## Specifications

Items	Code No.	Size	Finish
Plinth Fitting - Oval Base	PFO-100	100 mm	BL
	PFO-150	150 mm	

# SKIRTING CLIP FOR Q PLINTH/ Q PLINTH WITH SCREW



## Special Features

- Easy to slide-in to the skirting and clip to the legs.
- Quick fit system.
- Height adjustment legs with screw.
- Available in 100 and 150mm heights.
- Load capacity: 460kgs.

## Specifications

Items	Code Nos.	Size	Finish
Skirting Clip for Q Plinth	Q-PFSCB1	-	BL
Q Plinth 100 (without screw)	Q-PF-100-WO	100 mm	BL
Q Plinth 150 (without screw)	Q-PF-150-WO	150 mm	
Screw for Q Plinth	QPFS1035	10 X 35	ZW