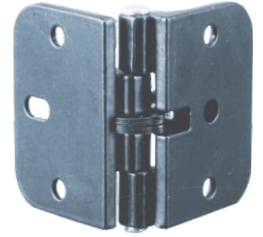


INLINE HINGE



Special Features

- Ideal for folding shutters.
- Spring loaded with adjustment.
- Die cast and powder coated.
- Used in walk in closets.
- Finish: Black

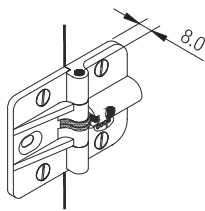


Specifications

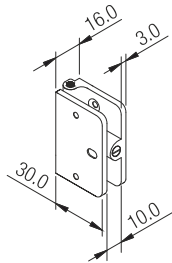
Code No. | HI1

Fitting Instructions

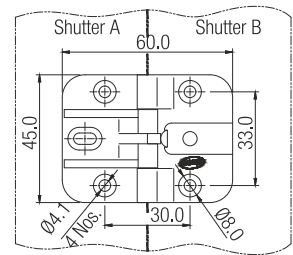
1. Hinges are fitted one above the other as per Fig. 1 on the inside of the folding shutter A & B.
2. A handle (not provided) outside helps fold shutters by pulling.
3. Load adjustment is possible with a screw driver as per Fig. 2.



Close Condition



Open Condition



Drilling Diagram