



HI SLIDE 50 PLUS



Special Features

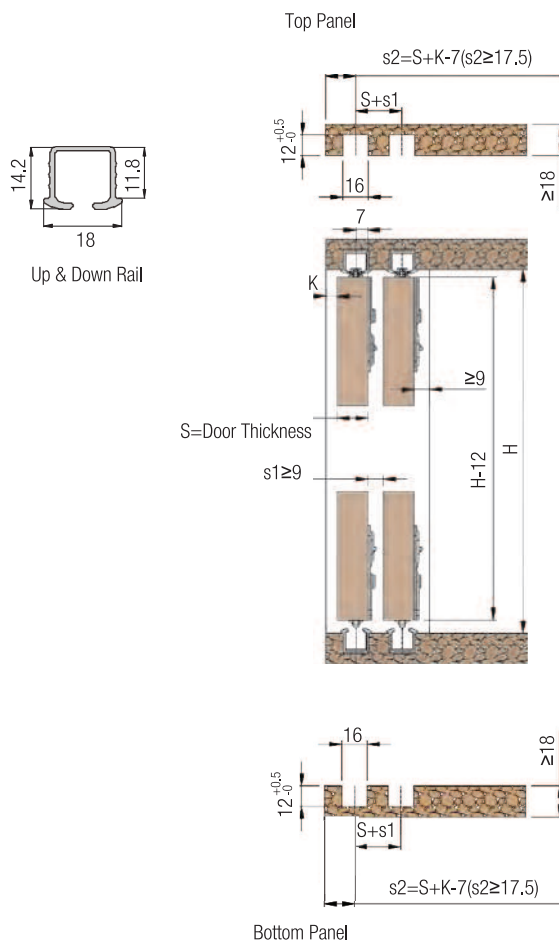
- For flush mounted sliding shutters.
- Bottom dome track for smooth rolling.
- Soft closing & Soft opening allows the shutter to close & open in Slow motion without banging, thus increasing the life of furniture.
- Load capacity - 50 Kgs.

Specifications

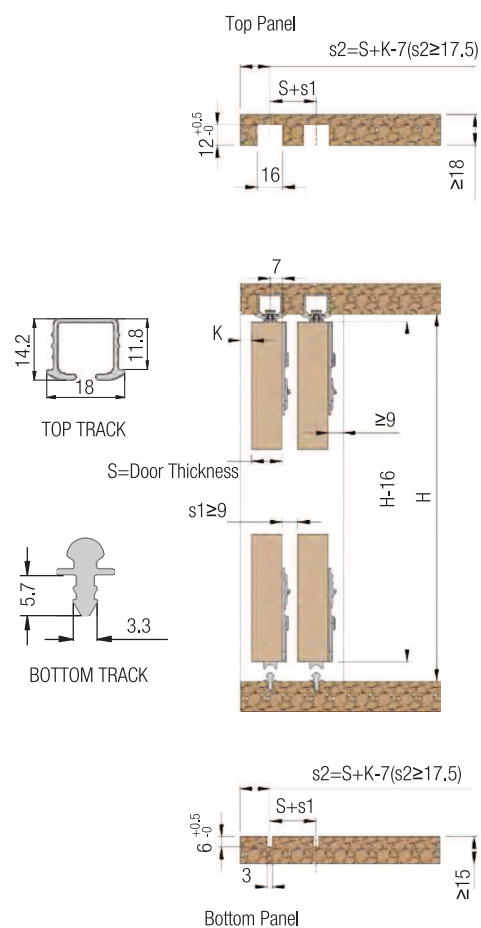
Item	Code Nos.	Finish
Hi Slide 50 Plus (Regular Track) - 2 Doors Soft Close	HS50PRT-2	Zinc White
Al. Profile Track for HS50PRT-2 (Set of Top & Bottom 2.44mtr for single door)	HS50PRT-T2	Anodized Silver
Al. Profile Track for HS50PRT-2 (Set of Top & Bottom 3.66mtr for single door)	HS50PRT-T3	
Hi Slide 50 Plus (Dome Track) - 2 Doors Soft Close	HS50PDT-2	Zinc White
Al. Profile Track for HS50PDT-2 (Set of Top & Bottom 2.44mtr for single door)	HS50-T2	Anodized Silver
Al. Profile Track for HS50PDT-2 (Set of Top & Bottom 3.66mtr for single door)	HS50-T3	

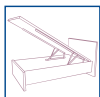


Wardrobe Size (Regular Track)



Wardrobe Size (Dome Track)

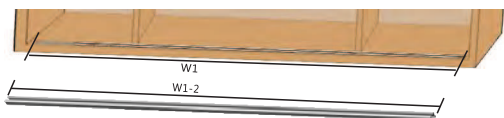




HI SLIDE 50 PLUS



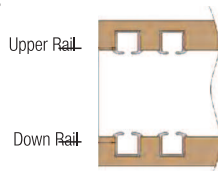
1. Rail Length



2. Damper installation



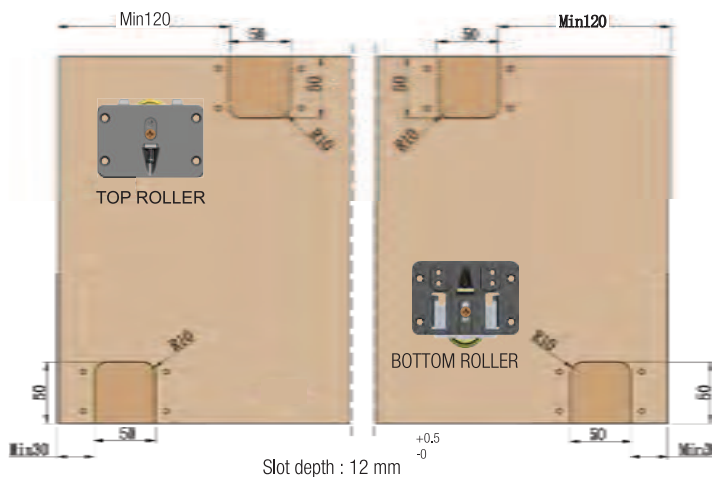
3. Put the rail in the wardrobe as shown in the picture (Rails should fit closely and firmly)



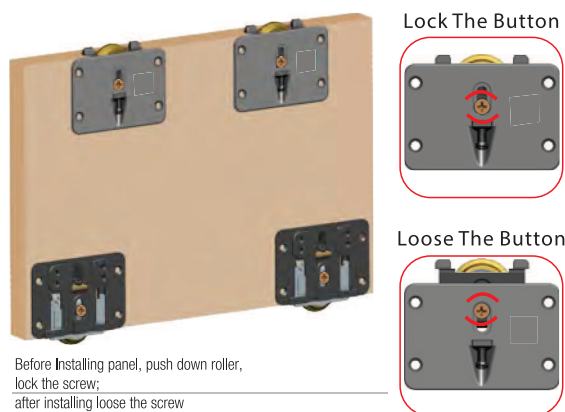
4. Adjust the damper hook



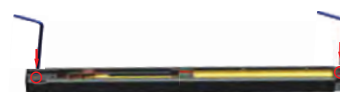
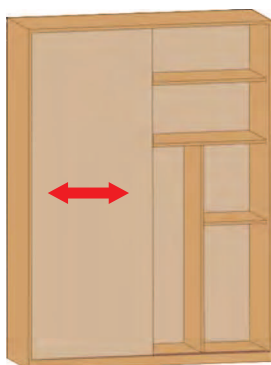
5. Door Groove Milling Photo



6. Install Runners



7. Regulation



7.1. Push Sliding Door, Position the damper

7.2. Adjust the gap by regulating up roller

7.3. Lock the damper

HS 50PRT2

Accessories	Picture	Qty	Accessories	Picture	Qty
TOP ROLLER		4	BOTTOM ROLLER		4
Damper		4	4*16 Cross Tapping Screw		32
2mm Allen Key		1			

HS 50PDT2

Accessories	Picture	Qty	Accessories	Picture	Qty
TOP ROLLER		4	BOTTOM ROLLER		4
Damper		4	4*16 Cross Tapping Screw		32
2mm Allen Key		1			