

# GLASS DOOR LOCK



## Special Features

- For single glass shutters thickness from 4-7mm/4-10mm
- Can be used for opening shutters.
- Cylinder housing also functions as handle.
- Easy installation.
- No glass drilling required.



Single

Double

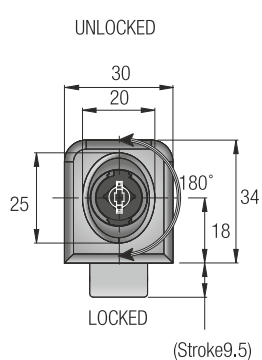
## Specifications

Item	Code Nos.	Size	Finish
Single Glass Door Lock	P-GDLS1*	9 mm	NP
	P-GDLS2*	12 mm	
Double Glass Door Lock	P-GDLD1*	9 mm	NP
	P-GDLD2*	12 mm	

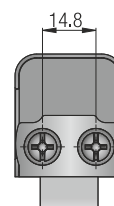
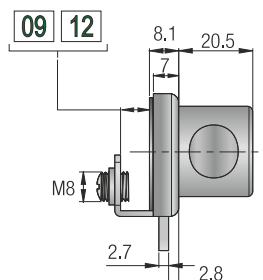


\*Add K3 to the item code for lock with 3 keys | Add K5 to the item code for lock with 5 keys | Add FL to the item code for lock with flip key | Add FL5K to the item code for lock with flip key from 5000 combination series | Add FL5K K3 to the item code for lock with 3 flip keys from 5000 combination series

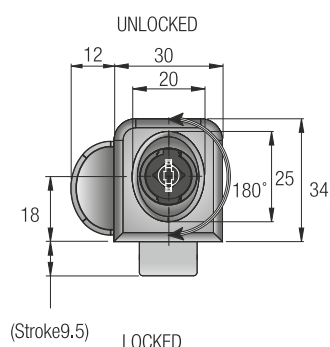
### Single



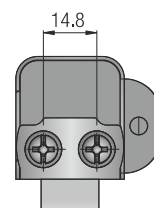
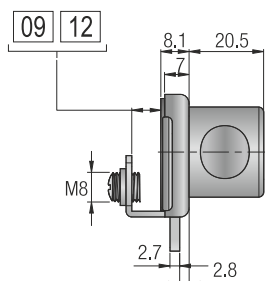
#### BL BRACKET LENGTH



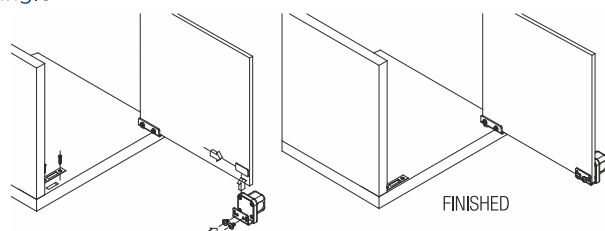
### Double



#### BL BRACKET LENGTH



### Single



### Double

