

# FLOOR SPRING - 90



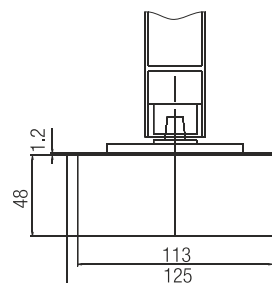
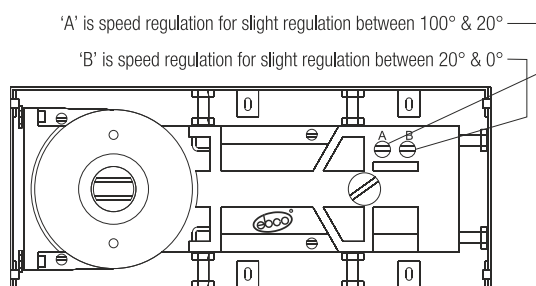
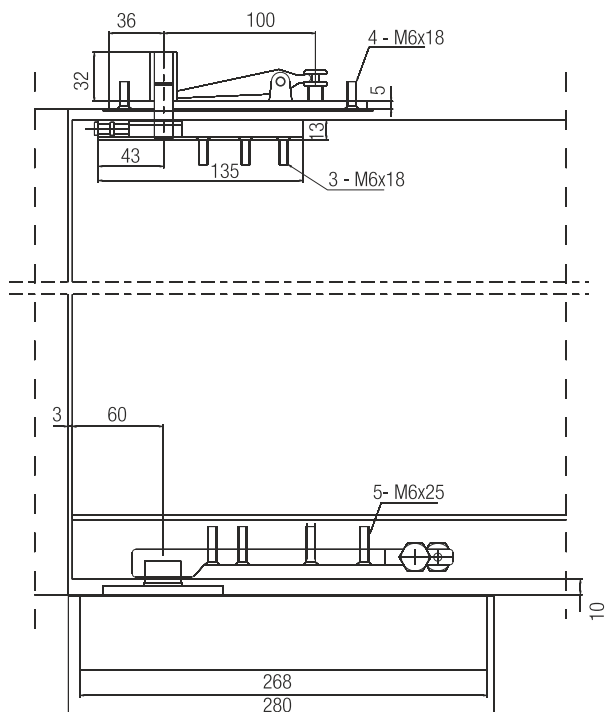
## Special Features

- 5,00,000 cycles tested
- Max. open angle 116°
- Hold open angle 90°
- Door width 1000mm
- Max. door weight : 90 Kgs.
- Open in both directions
- 1 year warranty.

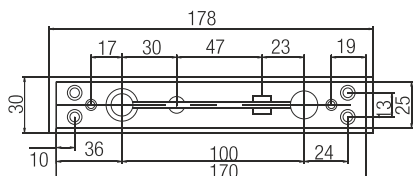


## Specifications

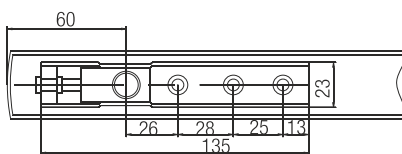
Item Code	Max. Door Width (mm)	Max Door Weight (kgs)	Finish
DFS90	800-1000	90	BS



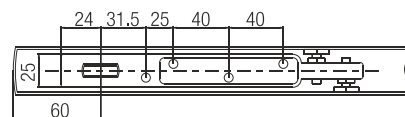
Top of Door Frame



Top of Door Leaf



Foot of Door Leaf



Bottom Pivot



DPF4-01

To be used directly on the floor without floor spring.

Top Pivot



DPF4-02

Top receiver pivot for wooden or ceiling installation.

Floor Spring door accessories DFS-A1

