

PRO-MOTION DRAWER SYSTEM - 'N SERIES'

Design Reg. No: 206160/06



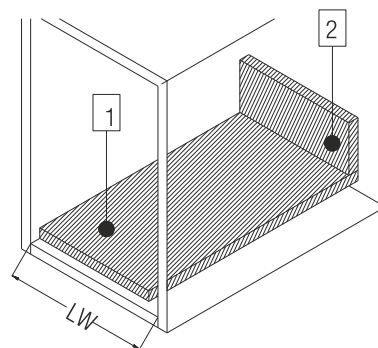
Pro Motion Drawer System 80mm



Special Features

- Length: 400, 450, 500 & 550mm
- Side panel height: 80mm
- Drawer width can be designed freely with automatic error adjustment.
- Load capacity: 30kg for 400/450mm length & 65kg for 500/550mm length
- Full extension of drawer with soft close feature
- Quick to installation and dismantle.
- Facia panel system for internal drawers
- Option of add-on gallery to increase stability of drawer.
- Finish: Silver Grey (SG), White (WH), Anthracite (AT)

Bottom and Back Panel measurement - 16 mm thickness



LW: INSIDE CABINET WIDTH

1. • Bottom Panel Width = $LW - 75\text{mm} \pm 0.5\text{mm}$
• Bottom Panel Length = Runner Length - 10 mm

BACK PANEL HEIGHT

2. • Back Panel Height = 68
• Back Panel Width = Inside Cabinet Width - 87mm ± 0.5

PRO-MOTION DRAWER SYSTEM - 'N SERIES'

Design Reg. No: 206160/06



Pro Motion Drawer System 80mm



Specifications

Item	Code Nos.	Min. installation height required (mm)	Internal usable depth (mm)
Pro Motion Drawer System 80	PMDS1-40-N	105	374
	PMDS1-45-N	105	424
	PMDS1-50-N	105	474
	PMDS1-55-N	105	524



PMDS1 (N) Facia Connector - D	PMDS1-FC-D
-------------------------------	------------



Facia Handle Profile	PMDS3-FHP-D
----------------------	-------------



Add-on Gallery (Pro-motion 'N' Series)	PMDS-G1-45
	PMDS-G1-50
	PMDS-G1-55



PRO-MOTION DRAWER SYSTEM - 'N SERIES'

Design Reg. No: 206160/06



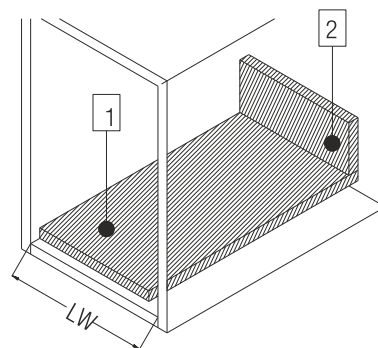
Pro Motion Drawer System 176mm



Special Features

- Length: 400, 450, 500 & 550mm
- Side panel height: 176mm
- Drawer width can be designed freely with automatic error adjustment.
- Load capacity: 30kg for 400/450mm length & 65kg for 500/550mm length
- Full extension of drawer with soft close feature
- Quick to installation and dismantle.
- Options of Drawer Partition System
- Facia panel system for internal drawers
- Finish: Silver grey (SG), White (WH), Anthracite (AT)

Bottom and Back Panel measurement - 16 mm thickness



LW: INSIDE CABINET WIDTH

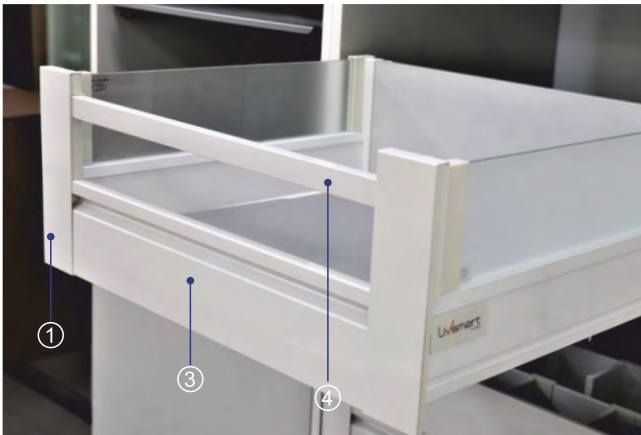
1. • Bottom Panel Width = $LW - 75\text{mm} \pm 0.5\text{mm}$
• Bottom Panel Length = Runner Length - 10 mm
2. • Back Panel Height = 176
• Back Panel Width = Inside Cabinet Width - 87mm ± 0.5

PRO-MOTION DRAWER SYSTEM - 'N SERIES'

Design Reg. No: 206160/06



Pro Motion Drawer System 176mm



Specifications

Item	Code Nos.	Min. installation height required (mm)	Internal usable depth (mm)
Pro Motion Drawer System 176 with Aluminium Panel	PMDS3A-40-N	215	374
	PMDS3A-45-N	215	424
	PMDS3A-50-N	215	474
	PMDS3A-55-N	215	524

Profile Drawer System 176 with Glass Panel	PMDS3G-40-N	215	374
	PMDS3G-45-N	215	424
	PMDS3G-50-N	215	474
	PMDS3G-55-N	215	524

PMDS3 (N) Facia Connector for Rail- D	PMDS3-FCR-D
---------------------------------------	-------------

PMDS3 (N) Facia Connector for Al Panels/Glass-D	PMDS3-FCPG-D
---	--------------

Facia Handle Profile	PMDS3-FHP-D
----------------------	-------------

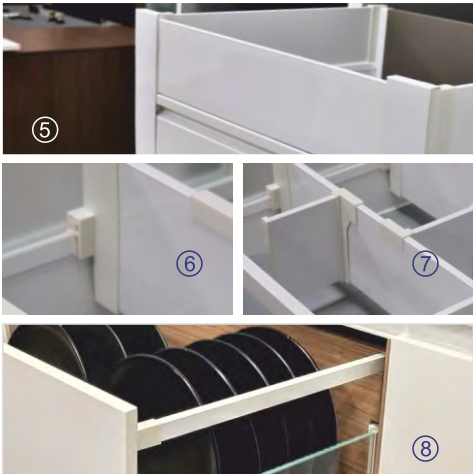
Facia Aluminium Rail Handle for PMDS3 (N)	PMDS3-RH-1
---	------------

PRO-MOTION DRAWER SYSTEM - 'N' SERIES'

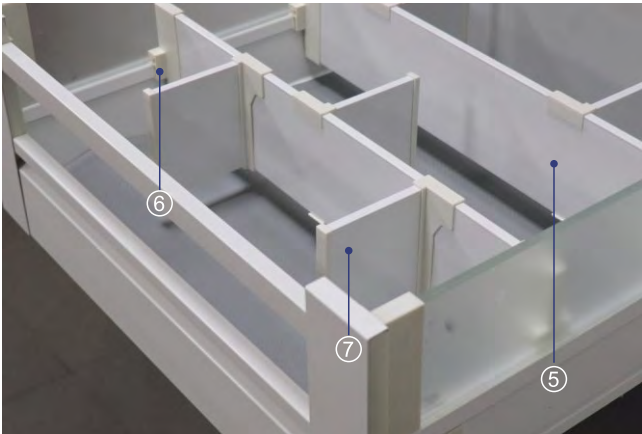
Design Reg. No: 206160/06



Pro Motion Drawer System 176mm



Facia - Side Partition Panel	PMDS3-FAP
Drawer Partition Bracket	PM-DPB
Drawer Divider	PM-DD
Add-on Gallery (Pro-motion 'N' Series)	PMDS-G1-45
	PMDS-G1-50
	PMDS-G1-55



Plates & Thali Organisers for drawers



Drawer Plate Organiser
Page-397



Kitchen Drawer Rack - Plate
Page-398



Kitchen Drawer Rack - Thali
Page-398

PRO-MOTION DRAWER SYSTEM - 'N SERIES'

Design Reg. No: 206160/06



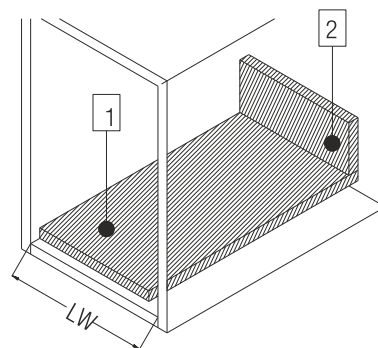
Pro Motion Drawer System 185mm



Special Features

- Length: 400, 450, 500 & 550mm
- Side panel height: 185mm
- Drawer width can be designed freely with automatic error adjustment.
- Load capacity: 30kg for 400/450mm length & 65kg for 500/550mm length
- Full extension of drawer with soft close feature
- Quick to installation and dismantle.
- Options of Drawer Partition System
- Option of add-on gallery to increase stability of drawer.
- Finish: Silver grey (SG), White (WH), Anthracite (AT)

Bottom and Back Panel measurement - 16 mm thickness



LW: INSIDE CABINET WIDTH

1. • Bottom Panel Width = $LW - 75\text{mm} \pm 0.5\text{mm}$
• Bottom Panel Length = Runner Length - 10 mm
2. • Back Panel Height = 185mm
• Back Panel Width = Inside Cabinet Width - 87mm ± 0.5

PRO-MOTION DRAWER SYSTEM - 'N SERIES'

Design Reg. No: 206160/06



Pro Motion Drawer System 185mm

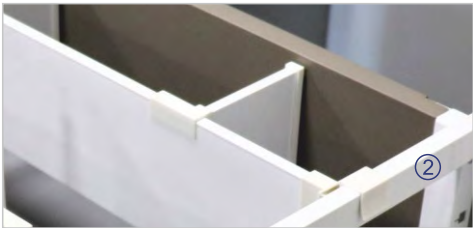


Specifications

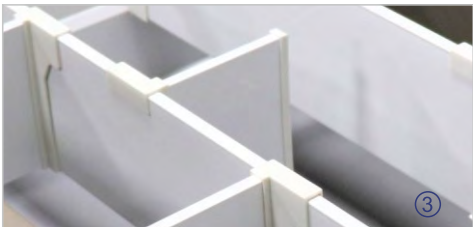
Item	Code Nos.	Min. installation height required (mm)	Internal usable depth (mm)
Pro-Motion Drawer System 185	PMDS3-40-N	225	374
	PMDS3-45-N	225	424
	PMDS3-50-N	225	474
	PMDS3-55-N	225	524



Drawer Partition Bracket	PM-DPB2
--------------------------	---------



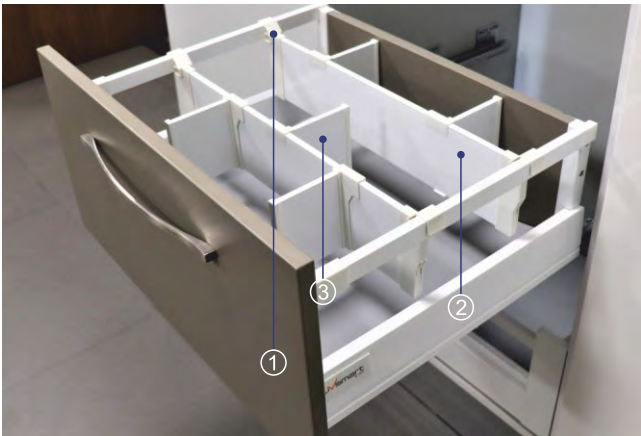
Facia - Side Partition Panel	PMDS3-FAP
------------------------------	-----------



Drawer Divider	PM-DD
----------------	-------



Add-on Gallery (Pro-motion 'N' Series)	PMDS-G1-45
	PMDS-G1-50
	PMDS-G1-55



PRO-MOTION DRAWER SYSTEM - 'N SERIES'

Design Reg. No: 206160/06



Pro Motion Drawer System - N Series

Dimension for cabinet drilling

System 80

Inside Cabinet Dimensions	Front Panel Mounting Positions	Front Fixing Brackets Positions	Back Panel Mounting Positions
	B Side Overlay (user - defined)	AB Side Overlay (user - defined)	

System 185

	B Side Overlay (user - defined)	AB Side Overlay (user - defined)	

System 176

	B Side Overlay (user - defined)	AB Side Overlay (user - defined)	

Drawer Assembly Instruction

Front fixing brackets mounting	Installed panel Remember to tighten the fixing screw	Front panel removing	1. Loosen the fastening screws 2. Rotate to dismantle the panel
Front panel height adjustment : ±2mm	Front panel side adjustment : right 1mm	Front panel side adjustment : left 1mm	

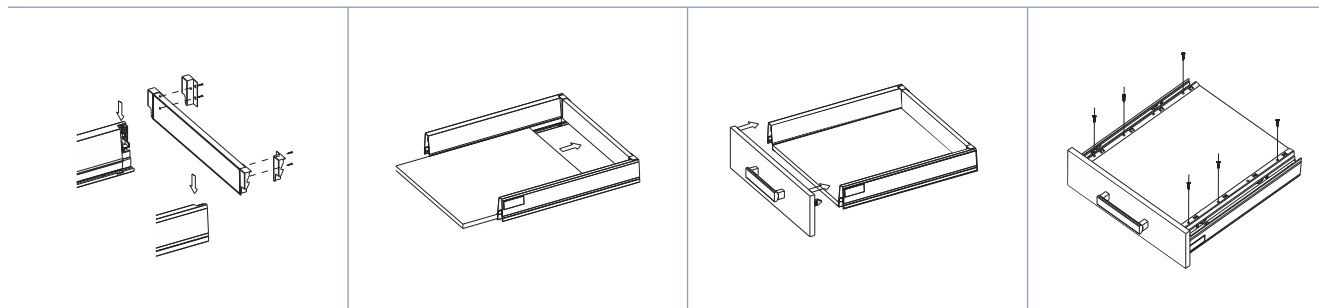
PRO-MOTION DRAWER SYSTEM - 'N SERIES'

Design Reg. No: 206160/06

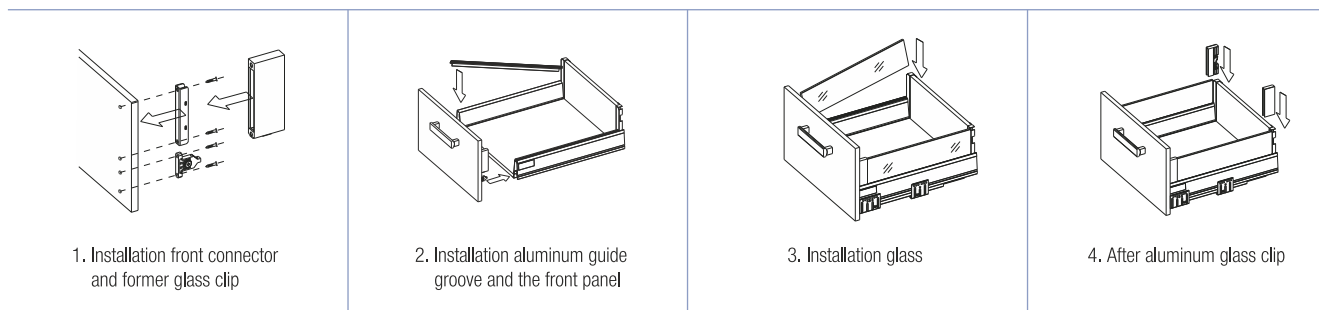


Pro Motion Drawer System - N Series

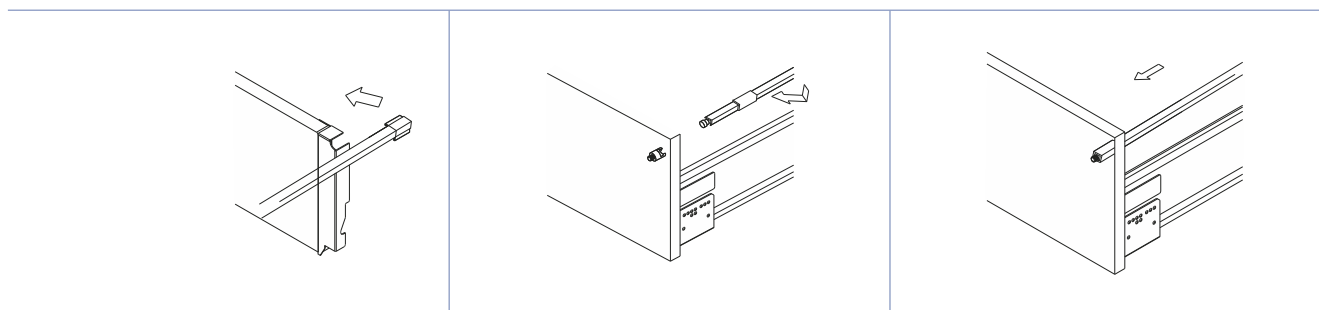
Mounting the drawer



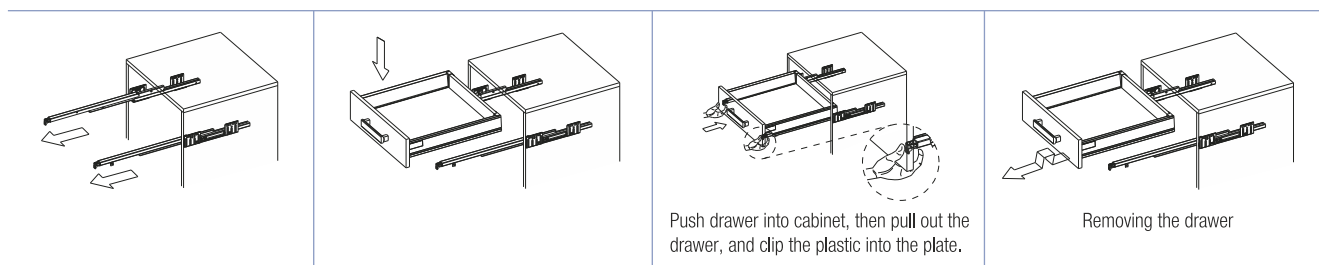
Glass / Aluminium Panel Installation - System 176



Gallery Installation - System 185



Installing the drawer



Function of the damper

