

PRO-MOTION DRAWER SYSTEM - 'S2 SERIES'



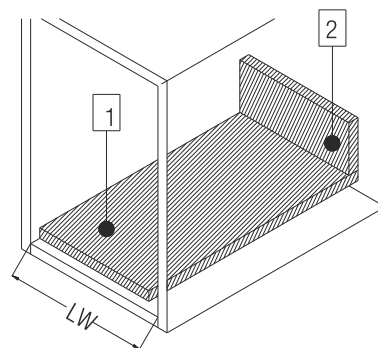
Pro-motion Drawer System 90mm - Slim 2



Special Features

- Length: 300, 350, 400, 450, 500, 550 & 600mm
- Side panel height: 88mm
- Drawer width can be designed freely with automatic error adjustment.
- Load capacity: 50kg
- Full extension of drawer with soft close feature
- Quick to install and dismantle.
- Facia panel system for internal drawers
- Option of add-on gallery to increase stability of drawer
- Finish: White (WH), Anthracite (AT)

Bottom and Back Panel measurement - 16 mm thickness



LW: INSIDE CABINET WIDTH

- Bottom Panel Width = $LW - 75\text{mm} \pm 0.5\text{mm}$
 - Bottom Panel Length = Runner Length - 10 mm
- Back Panel Height = 68mm
 - Back Panel Width = Inside Cabinet Width - 87mm ± 0.5



PRO-MOTION DRAWER SYSTEM - 'S2 SERIES'



Pro-motion Drawer System 90mm - Slim 2



Specifications

Item	Code Nos.	Min. installation height required (mm)	Internal usable depth (mm)
Pro-Motion Drawer System 90 - Slim 2	PMDS1-30-S2	110	274
	PMDS1-35-S2	110	324
	PMDS1-40-S2	110	374
	PMDS1-45-S2	110	424
	PMDS1-50-S2	110	474
	PMDS1-55-S2	110	524
	PMDS1-60-S2	110	574



Facia Connector for PMDS1 'S2' Series	PMDS1S2-FC
---------------------------------------	------------



Aluminium Facia Panel for PMDS3 'S' Series	PMDS3S-FP
--	-----------



Add-on Gallery (Pro-motion 'Slim 2' Series)	PMDS-G1-45-S2
	PMDS-G1-50-S2
	PMDS-G1-55-S2
	PMDS-G1-60-S2



PRO-MOTION DRAWER SYSTEM - 'S2 SERIES'



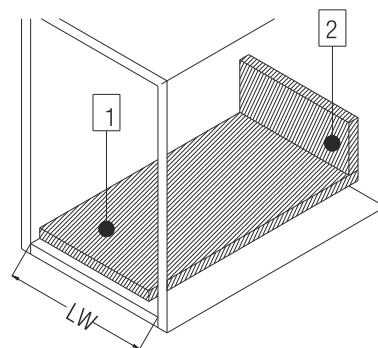
Pro-motion Drawer System 120mm - Slim 2



Special Features

- Length: 300, 350, 400, 450, 500, 550 & 600mm
- Side panel height: 120mm
- Drawer width can be designed freely with automatic error adjustment.
- Load capacity: 50kg
- Full extension of drawer with soft close feature
- Quick to install and dismantle.
- Option of add-on gallery to increase stability of drawer
- Finish: White (WH), Anthracite (AT)

Bottom and Back Panel measurement - 16 mm thickness



LW: INSIDE CABINET WIDTH

1. • Bottom Panel Width = $LW - 75\text{mm} \pm 0.5\text{mm}$
• Bottom Panel Length = Runner Length - 10 mm

2. • Back Panel Height = 100mm
• Back Panel Width = Inside Cabinet Width - 87mm ± 0.5

PRO-MOTION DRAWER SYSTEM - 'S2 SERIES'



Pro-motion Drawer System 120mm - Slim 2



Specifications

Item	Code Nos.	Min. installation height required (mm)	Internal usable depth (mm)
Pro-Motion Drawer System 120 - Slim 2	PMDS2-30-S2	142	274
	PMDS2-35-S2	142	324
	PMDS2-40-S2	142	374
	PMDS2-45-S2	142	424
	PMDS2-50-S2	142	474
	PMDS2-55-S2	142	524
	PMDS2-60-S2	142	574

Add-on Gallery (Pro-motion 'Slim 2' Series)	PMDS-G1-45-S2
	PMDS-G1-50-S2
	PMDS-G1-55-S2
	PMDS-G1-60-S2

PMDS-S2 Series-Living room application



Height - 90/120/175mm
Depth/Length - 300/350mm

PRO-MOTION DRAWER SYSTEM - 'S2 SERIES'



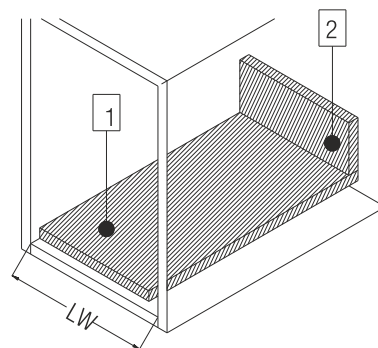
Pro-motion Drawer System 175mm - Slim 2



Special Features

- Length 300, 350, 400, 450, 500, 550 & 600mm
- Side panel height: 171mm
- Drawer width can be designed freely with automatic error adjustment.
- Load capacity: 50kg
- Full extension of drawer with soft close feature
- Quick to install and dismantle.
- Facia panel system for internal drawers
- Option of add-on gallery to increase stability of drawer
- Finish: White (WH), Anthracite (AT)

Bottom and Back Panel measurement - 16 mm thickness



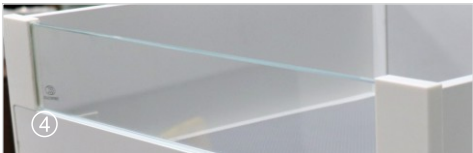
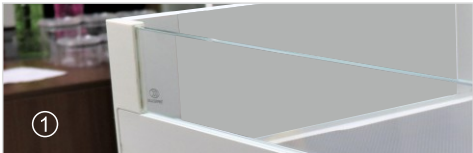
LW: INSIDE CABINET WIDTH

- Bottom Panel Width = $LW - 75\text{mm} \pm 0.5\text{mm}$
 - Bottom Panel Length = Runner Length - 10 mm
- Back Panel Height = 151mm
 - Back Panel Width = Inside Cabinet Width - 87mm ± 0.5

PRO-MOTION DRAWER SYSTEM - 'S2 SERIES'



Pro-motion Drawer System 175mm - Slim 2



Specifications

Item	Code Nos.	Min. installation height required (mm)	Internal usable depth (mm)
Pro-Motion Drawer System 175 - Slim 2	PMDS3-30-S2	193	274
	PMDS3-35-S2	193	324
	PMDS3-40-S2	193	374
	PMDS3-45-S2	193	424
	PMDS3-50-S2	193	474
	PMDS3-55-S2	193	524
	PMDS3-60-S2	193	574

Fascia Connector for PMDS3 'S2' Series for Glass/Aluminium Panel	PMDS3S2-FC-GP
--	---------------

Fascia Connector for PMDS3 'S2' Series for Rail	PMDS3S2-FC-R
---	--------------

Aluminium Fascia Panel for PMDS3 'S' Series	PMDS3S-FP
---	-----------

Glass Fascia Panel for PMDS3 'S' Series	PMDS3-S-FG-45
	PMDS3-S-FG-60
	PMDS3-S-FG-90

Aluminium Fascia Rail for PMDS3 'S' Series	PMDS3-FR
--	----------

Add-on Gallery (Pro-motion 'Slim 2' Series)	PMDS-G1-45-S2
	PMDS-G1-50-S2
	PMDS-G1-55-S2
	PMDS-G1-60-S2

PRO-MOTION DRAWER SYSTEM - 'S2 SERIES'



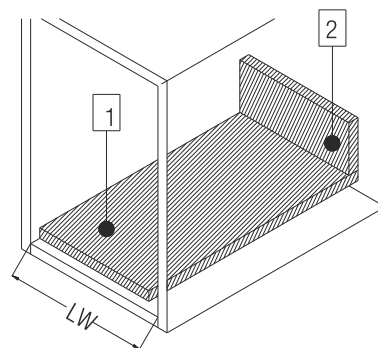
Pro-motion Drawer System 203mm - Slim 2



Special Features

- Length: 450, 500 & 550mm
- Side panel height: 203mm
- Drawer width can be designed freely with automatic error adjustment.
- Load capacity: 50kg
- Full extension of drawer with soft close feature
- Quick to install and dismantle.
- Option of add-on gallery to increase stability of drawer
- Finish: White (WH), Anthracite (AT)

Bottom and Back Panel measurement - 16mm thickness



LW: INSIDE CABINET WIDTH

- Bottom Panel Width = $LW - 75\text{mm} \pm 0.5\text{mm}$
 - Bottom Panel Length = Runner Length - 10 mm
- Back Panel Height = 183mm
 - Back Panel Width = Inside Cabinet Width - 87mm ± 0.5

PRO-MOTION DRAWER SYSTEM - 'S2 SERIES'



Pro-motion Drawer System 203mm - Slim 2



Specifications

Item	Code Nos.	Min. installation height required (mm)	Internal usable depth (mm)
Pro-Motion Drawer System 203 - Slim 2	PMDS4-45-S2	225	424
	PMDS4-50-S2	225	474
	PMDS4-55-S2	225	524



Add-on Gallery (Pro-motion 'Slim 2' Series)	PMDS-G1-45-S2
	PMDS-G1-50-S2
	PMDS-G1-55-S2
	PMDS-G1-60-S2

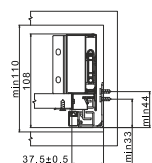
PRO-MOTION DRAWER SYSTEM - 'S2 SERIES'



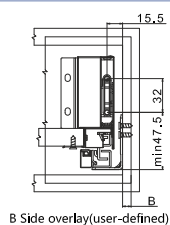
Pro-motion Drawer System - Slim 2

System 90mm - Slim 2

Inside Cabinet Dimensions

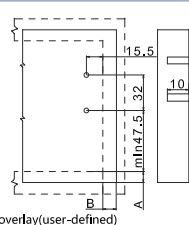


Front Panel Mounting Positions



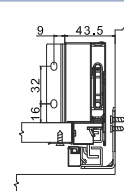
B Side overlay(user-defined)

Front Fixing Brackets Positions



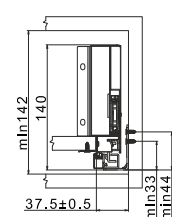
A.B Side overlay(user-defined)

Back Panel Mounting Positions

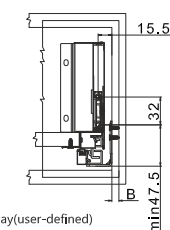


System 120mm - Slim 2

Inside Cabinet Dimensions

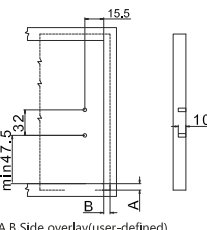


Front Panel Mounting Positions



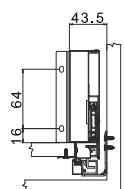
B Side overlay(user-defined)

Front Fixing Brackets Positions



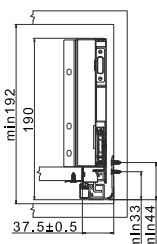
A.B Side overlay(user-defined)

Back Panel Mounting Positions

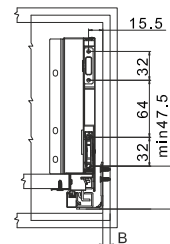


System 175mm - Slim 2

Inside Cabinet Dimensions

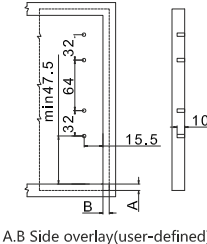


Front Panel Mounting Positions



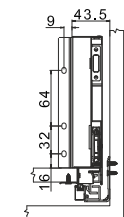
B Side overlay(user-defined)

Front Fixing Brackets Positions



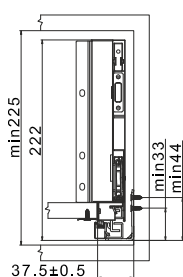
A.B Side overlay(user-defined)

Back Panel Mounting Positions

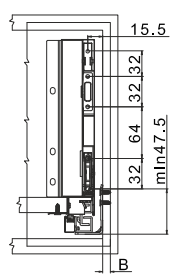


System 203mm - Slim 2

Inside Cabinet Dimensions

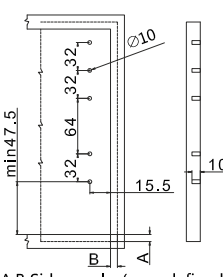


Front Panel Mounting Positions



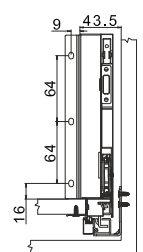
B Side overlay(user-defined)

Front Fixing Brackets Positions

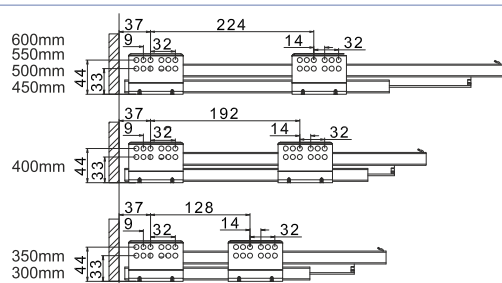


A.B Side overlay(user-defined)

Back Panel Mounting Positions



Runner Installation Dimensions(mm)



Basic length:300/350/400/450/500/550/600

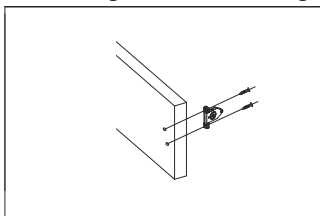
PRO-MOTION DRAWER SYSTEM - 'S2 SERIES'



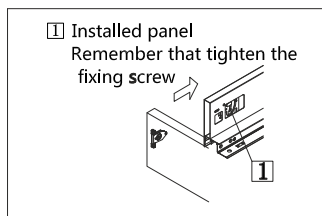
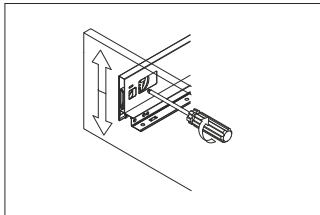
Pro-motion Drawer System - Slim 2

System 90/120 mm

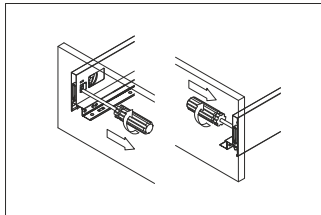
Front fixing brackets mounting



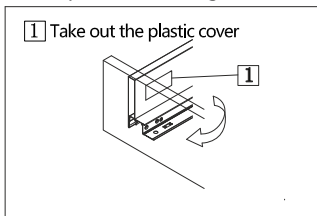
Front panel height adjustment: ± 2 mm



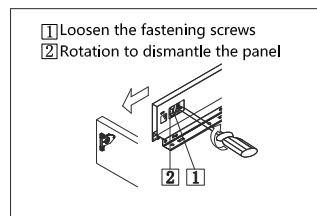
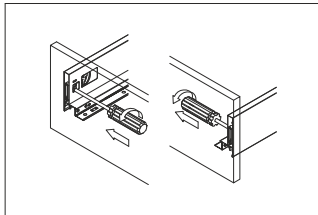
Front panel side adjustment: right 1mm



Front panel removing

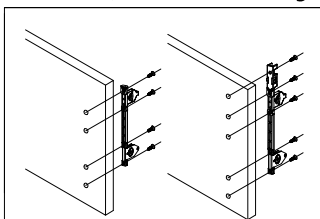


Front panel side adjustment: left 1mm

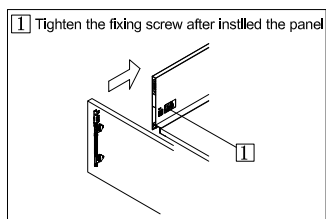
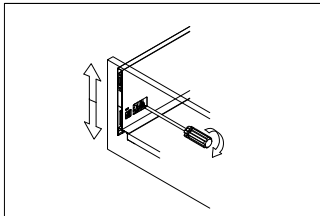


System 175/203 mm

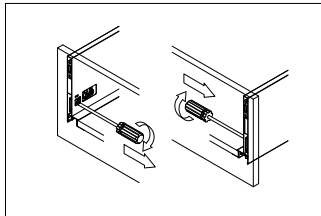
Front fixing brackets mounting



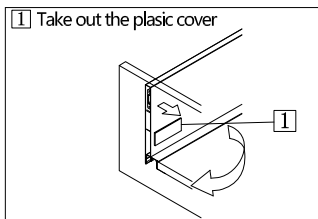
Front panel height adjustment : ± 2 mm



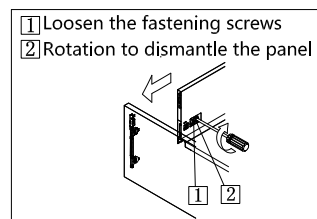
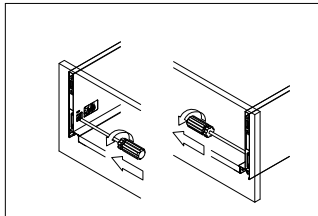
Front panel side adjustment : right 1mm



Front panel removing

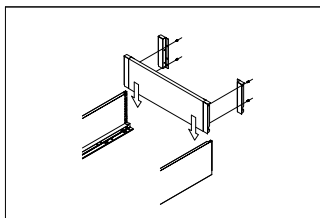


Front panel side adjustment : left 1mm

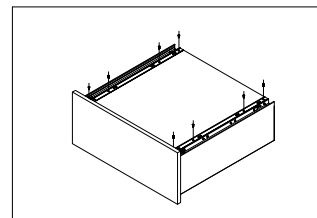
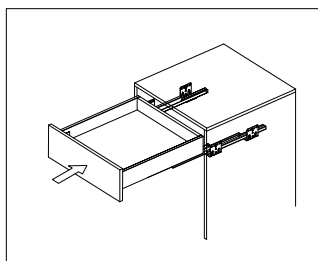
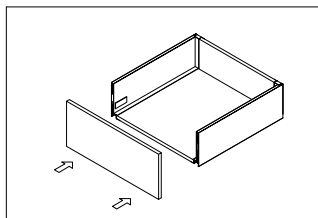
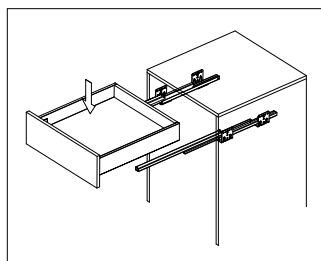
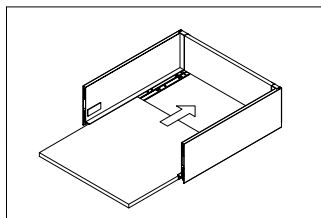
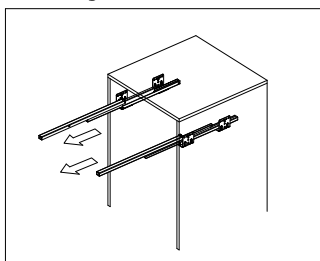


System 90/120/175/203 mm

Mounting the drawer



Installing the drawer



Removing the drawer

