



DOUBLE CORNER PULLOUT 450



Special Features

- Ideal for corner cabinets.
- Aesthetically designed with chrome lining & gallery.
- Base mount design ensures high load capacity & trouble-free working.
- Trays can be pulled out individually.
- Unique anti-slip melamine base.
- Available as left-opening & right-opening.
- With soft close & soft open feature.

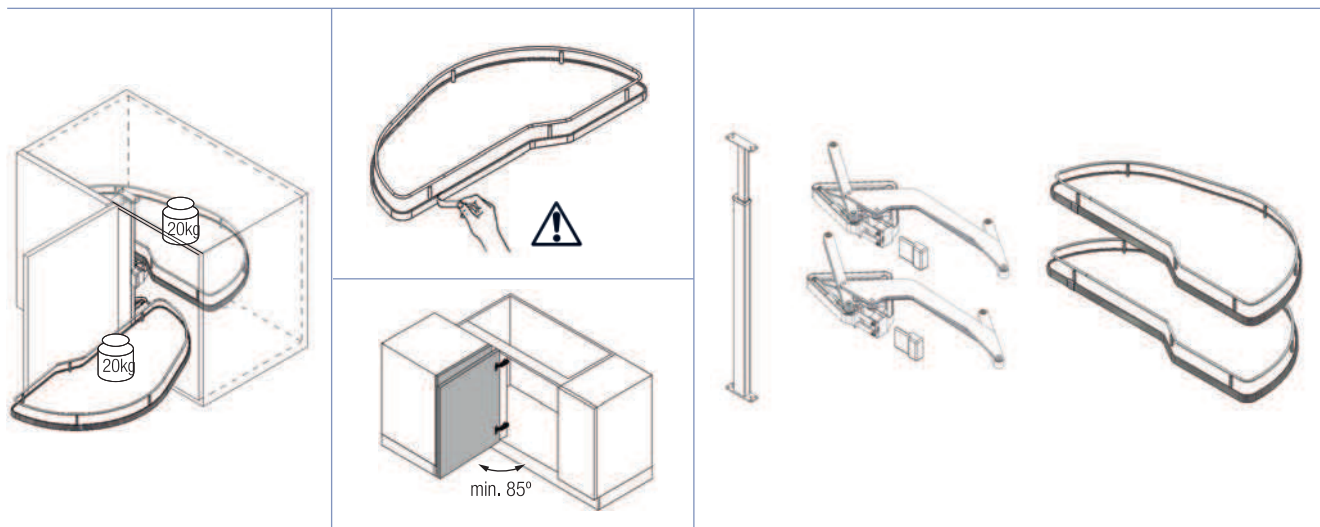
Specifications

Item Code	Size
P-DCPO-45R	450 mm
P-DCPO-45L	450 mm

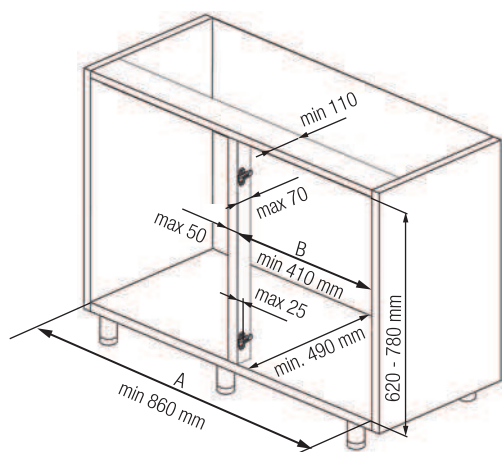


Fitting Instructions

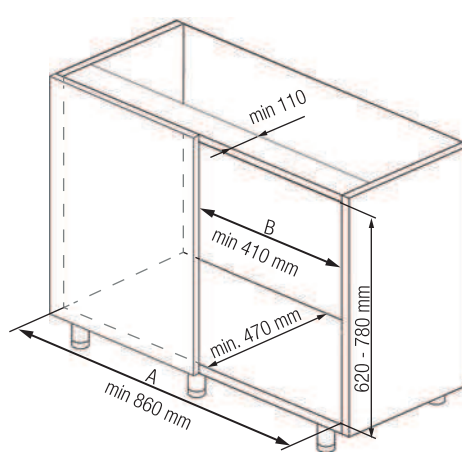
1. Mark the position at top and bottom of cabinet as shown in Fig.1 and fix the vertical column as shown in Fig. 2.
2. Tighten the vertical column after adjusting the height as per cabinet size.
3. Fix the lower arm on vertical column as shown in Fig. 4a to 4d. Tighten the latches with 5mm allen key as shown in Fig. 4e.
4. Swing the arm outside and locate the position of the bottom tray and mount on the bottom arm as shown in Fig. 5a and 5b. Do the same for the upper tray.
5. Bring the trays in closed position and lock the trays as shown in Fig. 6a and 6b.



Cabinet With Vertical Wooden Cross



Cabinet Without Vertical Wooden Cross

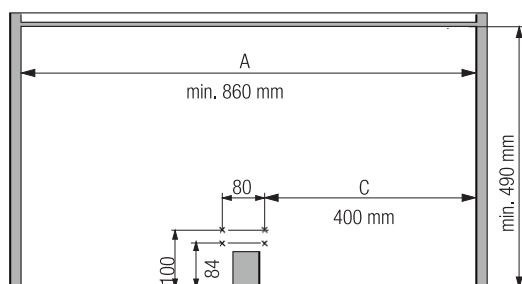




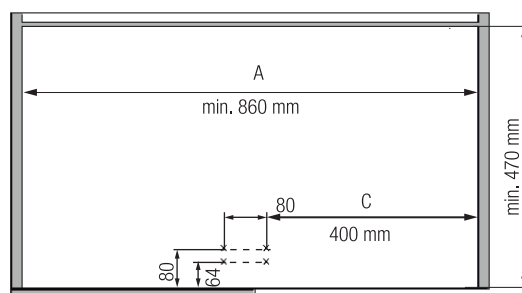
DOUBLE CORNER PULLOUT 450

①

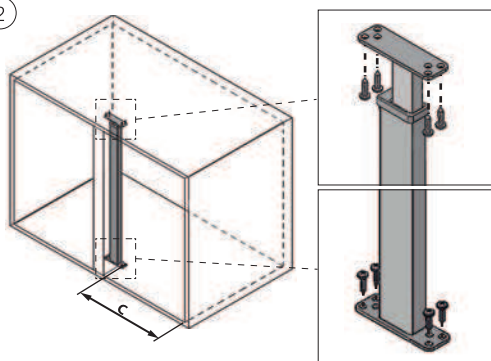
CABINET WITH VERTICAL WOODEN CROSS



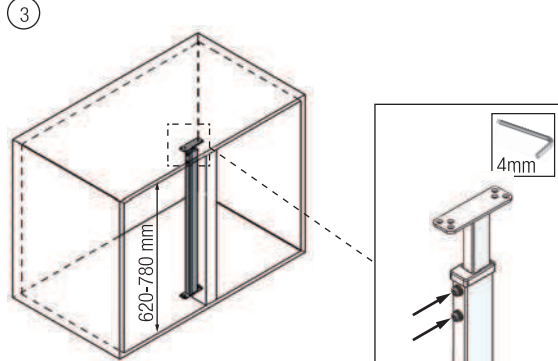
CABINET WITHOUT VERTICAL WOODEN CROSS



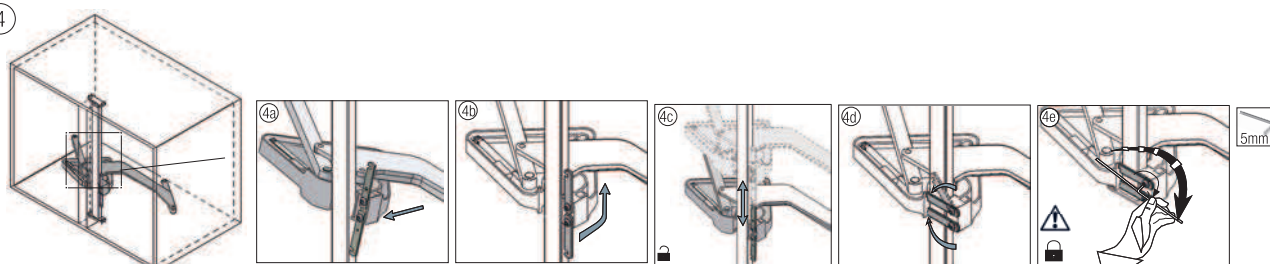
②



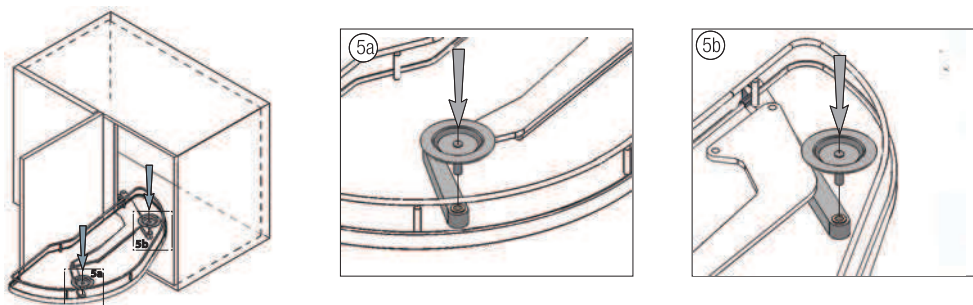
③



④



⑤



⑥

