

# PRESTO - DOOR KNOB LOCK

Design Application Reg. No: 1555955/313851



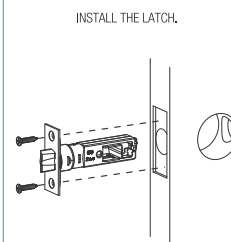
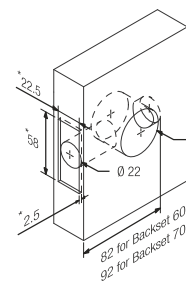
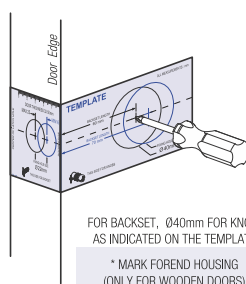
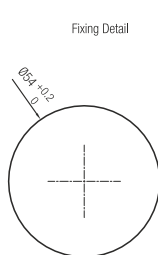
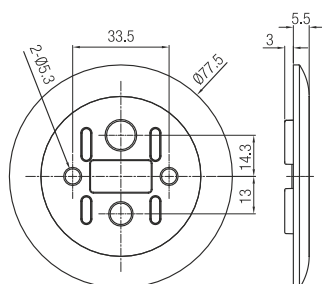
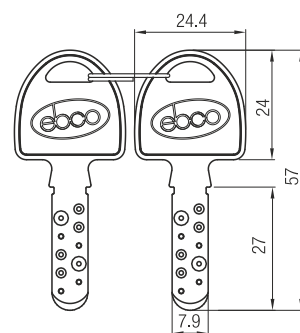
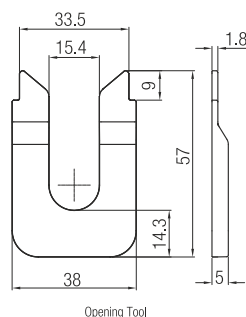
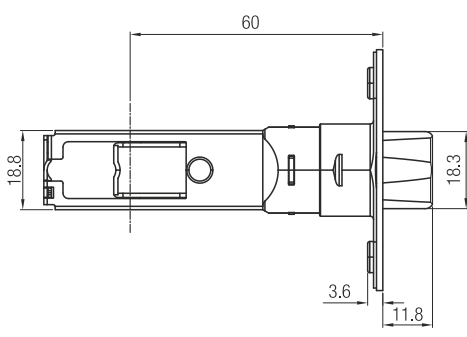
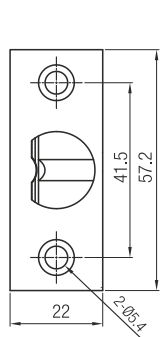
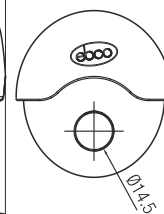
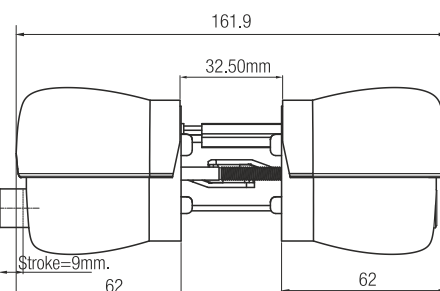
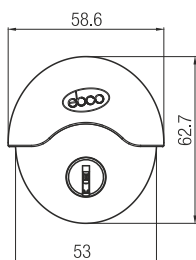
## Special Features

- Door knob with push button locking.
- Press button to latch from inside until unlocked by key or by inside knob.
- For 32-50mm door thickness.
- With dimple keys.
- 1,00,000 cycles tested.
- Separate opening tool available for unlocking.



## Specifications

Item	Code Nos.	Finish	Item	Code Nos.	Finish
Presto - Door Knob Lock (Keyless) (Aluminium Version)	P-DKL2-CP	CP	Presto - Door Knob Lock (One Side Key) (Aluminium Version)	P-DKL2K-CP	CP
	P-DKL2-NS	NS		P-DKL2K-NS	NS
	P-DKL2-AT	AT		P-DKL2K-BS	BS
	P-DKL2-BS	BS		P-DKL2K-AQ	AQ
	P-DKL2-AQ	AQ		P-DKL2K-AT	AT
			Presto - Door Knob Lock - Boring Kit	BKPL1	BL
			Presto - Door Knob Lock - Opening Tool	P-DKL-OT	CL



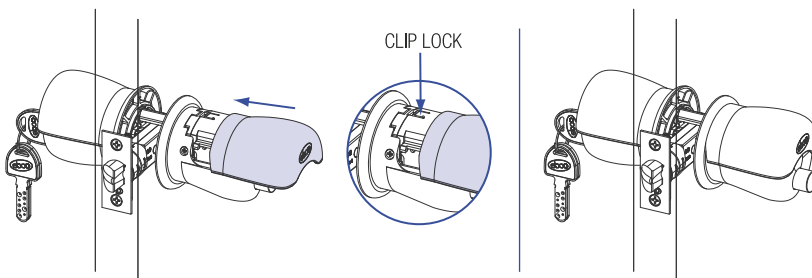
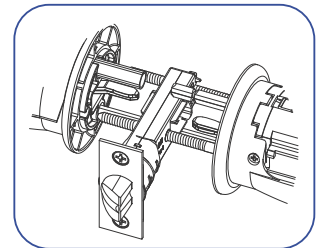
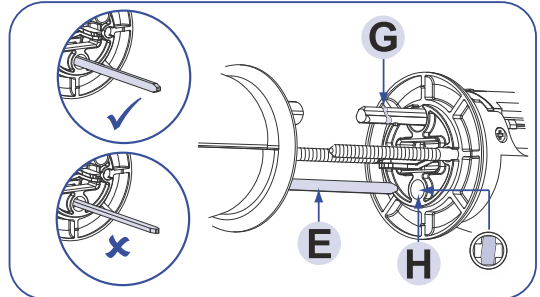
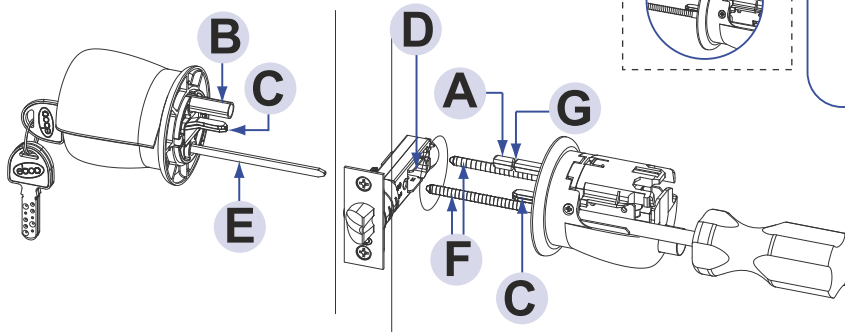
# PRESTO - DOOR KNOB LOCK



Important: For door thickness of less than 39mm cut pin (A) at the marked position (G)

Follow the following steps:

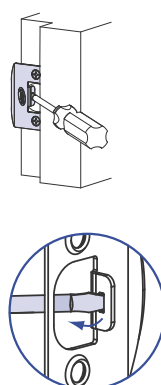
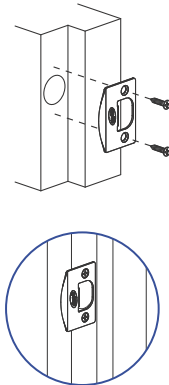
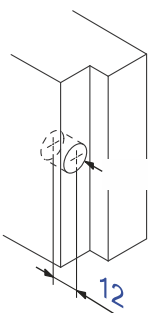
- 3.1 Place the outside knob with inside mechanism in position.
- 3.2 Insert pin (A) in its plug (B), metal scissors (D) must pass through the guide (D) of the latch unit.
- 3.3 Bar (E) must be inserted in the corresponding vertical hole (H) of the inside mechanism.
- 3.4 Tighten the screws (F).



Important: please check for correct positioning and operation of the lock

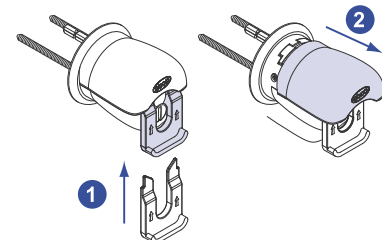
Slide the inside top cap towards the door until it clicks into place.

Fixing hole size



Drill doorpost and install strike plate. The strike plate is fitted with a special lip which can be used for adjustment of the latch bolt.

Removal of the top cap  
(only top cap on the inside knob can be removed)

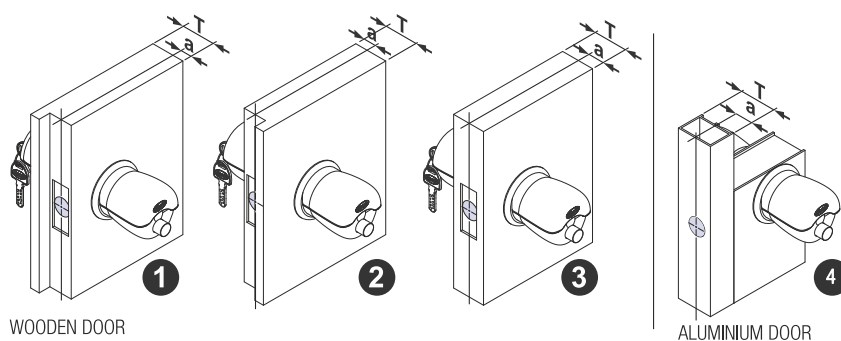


1. Insert cap removal tool up to the cap, then push upward until a click sound is heard.
2. Slide the cap out.

Different applications:

The lock is suitable for all doors with thickness from 32-50mm.

For different wood profiles (pic 1, 2, 3); aluminium (pic 4)



CENTER OF LATCH HOLE

DOOR THICKNESS ( T )	CENTER OF LATCH HOLE ( a )	
	MIN	MAX
34-42	17	25

DOOR THICKNESS ( T )	CENTER OF LATCH HOLE ( a )
32-34	T / 2
42-50	T / 2