



DOOR CLOSER - DC 1001



Special Features

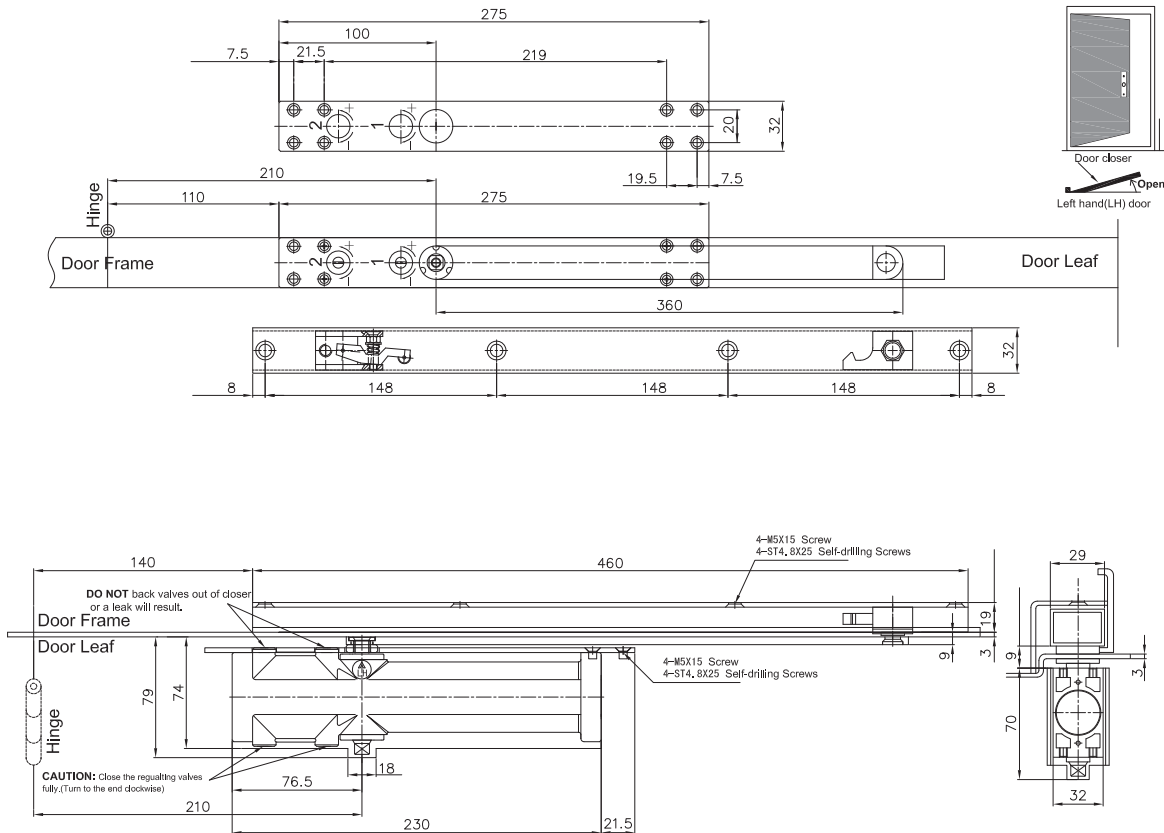
- Hold open facility.
- Hold open angle 90° to 160°.
- Latching and Closing speed adjust valve.
- Right hand and left hand opening door.
- Door width upto 850mm.
- Door weight upto 65kg.
- Door opening angle of 180° max.
- 5,00,000 cycles tested.



Specifications

Item Code No.	Hold Open Facility	Fire Rated	Latching and Closing Speed Adjust Valve	Technical Parameter	
				Door Width	Door Weight
DC 1001	Yes	Yes	Available	850mm	65kg

■ Standard Mounting of left Hand (LH)-View from Push Side

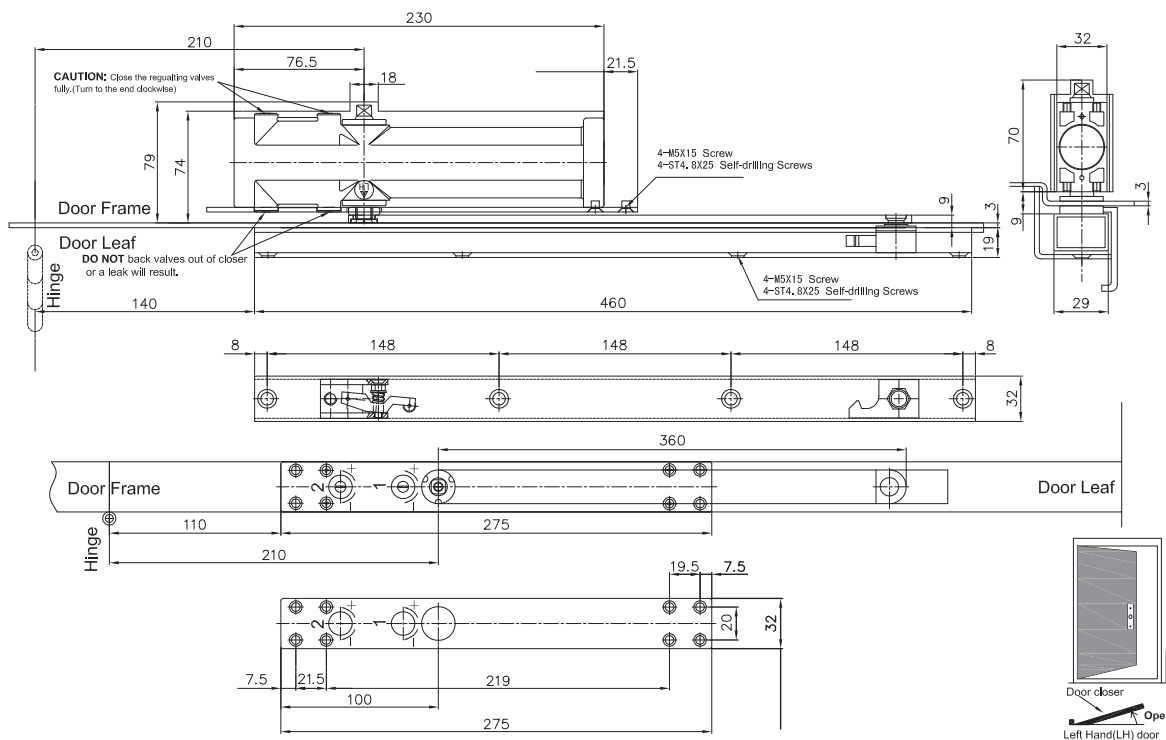




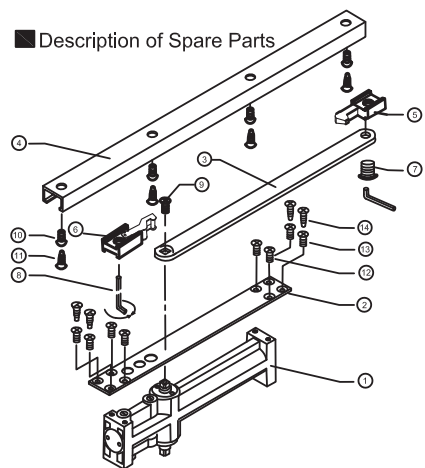
DOOR CLOSER - DC 1001



■ Top Jamb Mounting of left Hand (LH)-View from Push Side

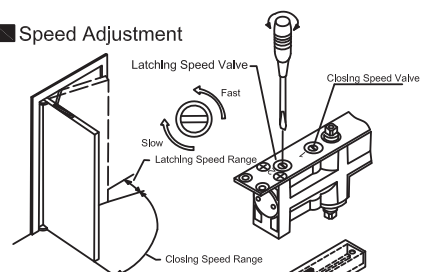


■ Description of Spare Parts

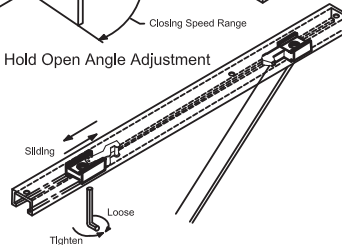


NO	Description	Q'TY
①	Body	1
②	Fixing Plate	1
③	Main Arm	1
④	Slide Track	1
⑤	Slider	1
⑥	Hold Open Module	1
⑦	Fixing Bolt M8X1	1
⑧	Sex Spanner 5mm	1
⑨	Screw M6x12L	1
⑩	Screw M5x15L	4
⑪	Self-drilling Screw ST4.8X25	4
⑫	Screw M5x12L	4
⑬	Screw M5x15L	4
⑭	Self-drilling Screw ST4.8X25	4

■ Speed Adjustment

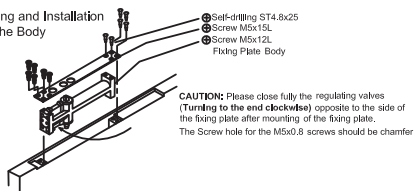


■ Hold Open Angle Adjustment

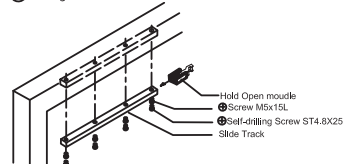


■ Non-Handed ■ Installation Steps

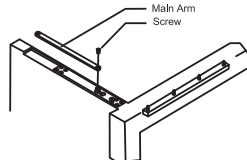
① Fixing and Installation of the Body



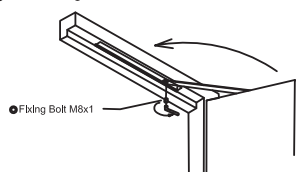
② Fixing and Installation of the Slide Track



③ Combining the Main Arm and Body



④ Combining the Main Arm and the Slider in the track



5 Opening Angle and Closing Speed Adjustment

