

CUPBOARD PULL-OUT

Special Features

- For tall unit storage cupboards.
- Consists of base unit having special plastic coated bearings for silent running.
- Top guide has lateral adjustments.
- Base unit has angle adjustments.
- Used where narrow spaces are available and gives easy access from both sides.
- Ideal for kitchen larders, office storage units and all types of tall unit pull cupboards.
- Load capacity: 170 Kgs.

Specifications

Code No.	Finish
CPO 1	PC



CUPBOARD PULL-OUT



Fitting Instructions

1. Base unit is to be screwed onto the cabinet floor as per Fig. 1. Use M6x40 hex. bolts.
2. Cupboard is to be mounted onto Base assembly as per Fig. 2. Use M6x40 CSK bolts.
3. Top track is fitted on top of Cupboard as per Fig. 3. Use No. 8x19 wood screws.
4. Top guide is to be fitted onto Cabinet roof as per Fig. 4. Use No. 8x19 wood screws.
5. Cupboard can be fully extended outwards and is accessible from both sides.
6. Top guide is to be adjusted for excess play between rollers and Top track.

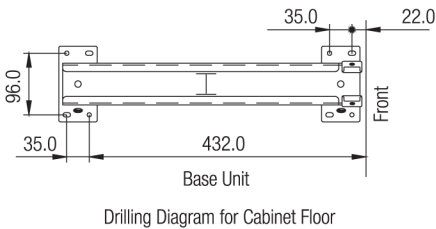
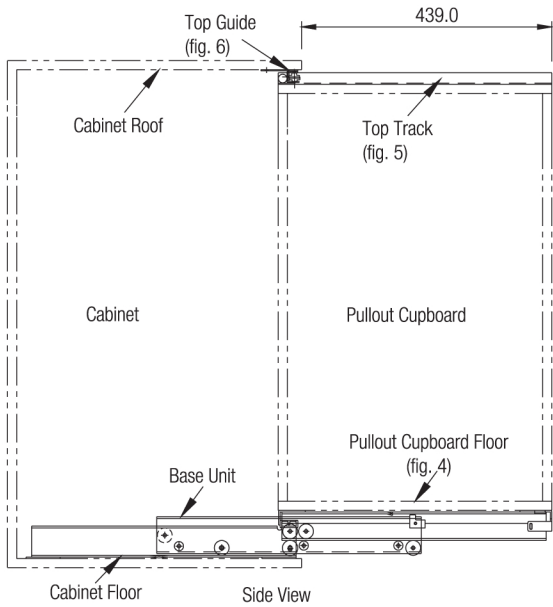
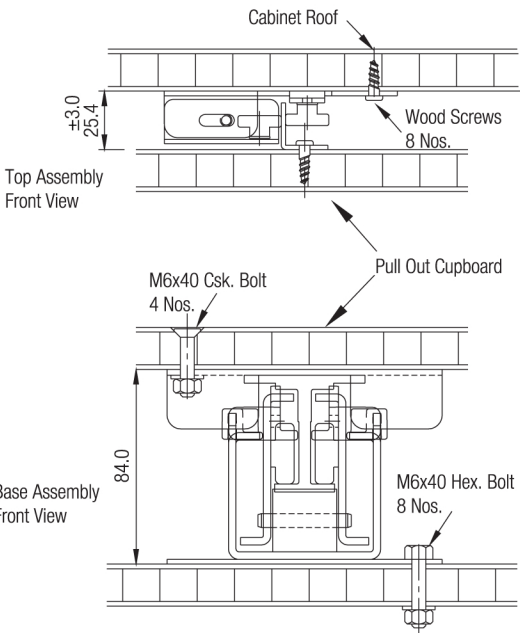
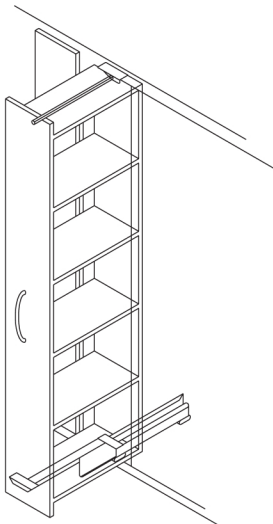


Fig.1

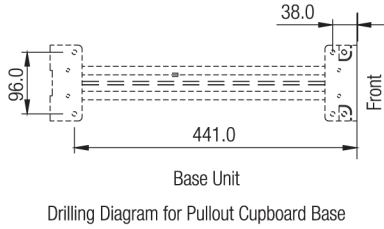


Fig.2

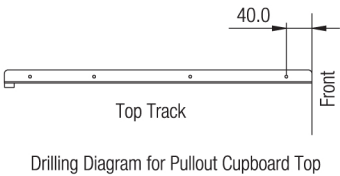


Fig.3

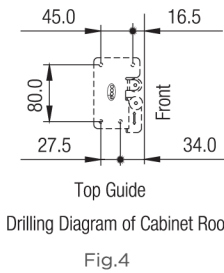


Fig.4