

4 DIGIT COMBINATION LOCK - WARDROBE 2 POINT INSET (WITH ROD)

Special Features

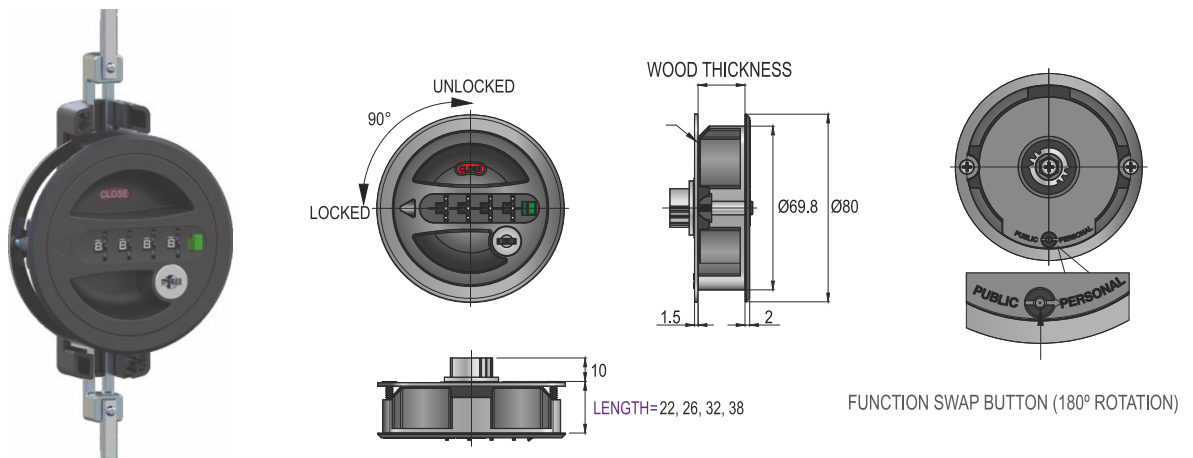
- Four digit combination lock for keyless operation.
- Get instant keyless access by replacing any standard furniture lock.
- Once unlocked, the housing doubles as a knob: just rotate 90° to unlatch.
- The combination can be reset to any four digit number, providing up to 10000 possible combinations.
- Two levels of code setting: Combi- Public and Combi- Personal.
- Resolve forgotten secret code easily & rapidly with secret code retriever key.
- Quick - fix system; easy to install.
- Ideal for home furniture (wardrobe), Corporates (Offices/ Banks/Bpo), retail showrooms etc.
- For Door Thickness: 16-20mm, Height : 2.4mm(1.2mm x 2).



WOOD

Specifications

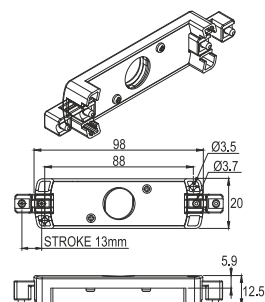
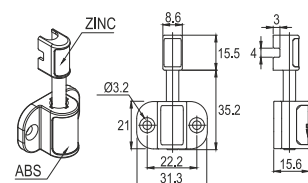
Code No.	Finish
P-CLWL2-20	BL



SEE FIXING DETAILS NEXT PAGE

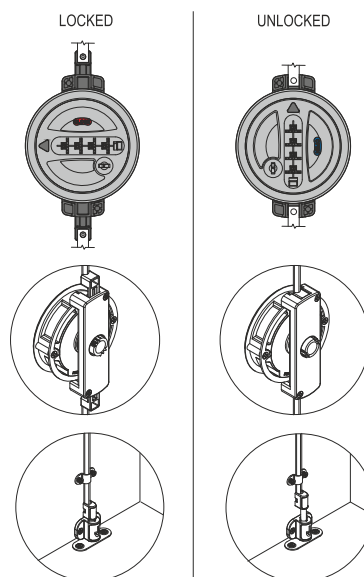
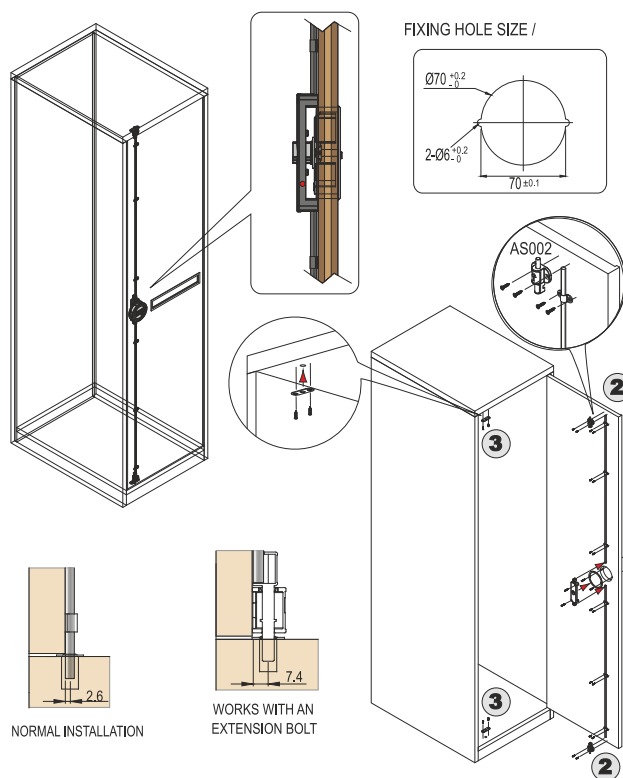
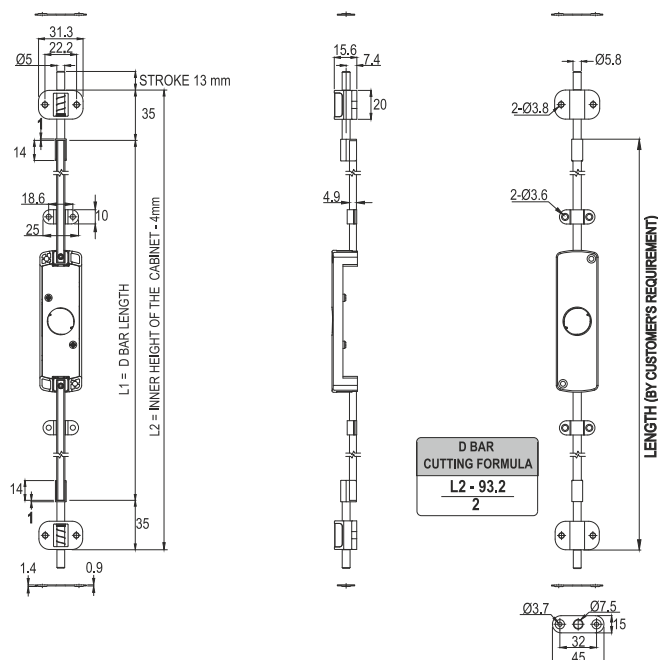


SUITABLE FOR OVERLAY CABINET DOOR AND INSET CABINET DOOR



4 DIGIT COMBINATION LOCK - WARDROBE 2 POINT INSET (WITH ROD)

SUITABLE FOR OVERLAY CABINET DOOR AND INSET CABINET DOOR



EXTENSION BOLT OFFERS BETTER SECURITY THAN REGULAR INSTALLATION, AS THE BOLT IS TO BE LOCATED FURTHER INSIDE WOOD PANEL (ADDS 7.4mm).