

PRO-LIFT BED FITTINGS - EASY FIT (W/O GAS LIFT)



Special Features

- Ideal for storage under bed.
- Special lifts available for different loads.
- 30° opening angle allows easy access to the storage area
- Easy to lift (with the weight of top board) with minimum force.
- Easy access as the gas lift keeps the bed top stay.
- Easy to Fit.
- Finish: Anthracite.

Specifications

Item	Code Nos.	Type	Max. Force (Kgs.)	Recommended bed size	
				Width	Length
Pro Lift Bed Fitting - Easy Fit - Regular	PLBF-EF	--	--	--	--
Pro Lift Bed Fitting - Easy Fit Extended Arm (w/o Gas Lift)	PLBF-EF-E				
Pro Lift Bed Fitting - Easy Fit Extended Arm 1100mm (w/o Gas Lift)	PLBF-EF-E110				
Gas Lift 500N	PLBF-50C	Medium	50	2.5 to 3 feet	5 to 6 feet
Gas Lift 750N	PLBF-75C	Medium	75	3 to 4 feet	6 to 6.5 feet
Gas Lift 1200N	PLBF-120C	Heavy	120	4 to 5 feet	
Gas Lift 1500N	PLBF-150C	Heavy	150	5 to 6 feet	

Fitting Instructions

1. Fit the Fix Brackets on bed frame as per given dimensions (Refer Fig.1) without the gas spring fitted.
2. Now fix the bed platform to the top brackets (Refer Fig. 2).
3. Lastly fit gas spring as shown in diagram (Refer Fig.3).

* Special Note:

Installation dimensions are only recommendation and will vary depending on type of construction design.

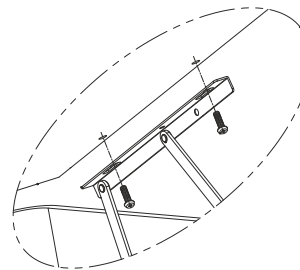
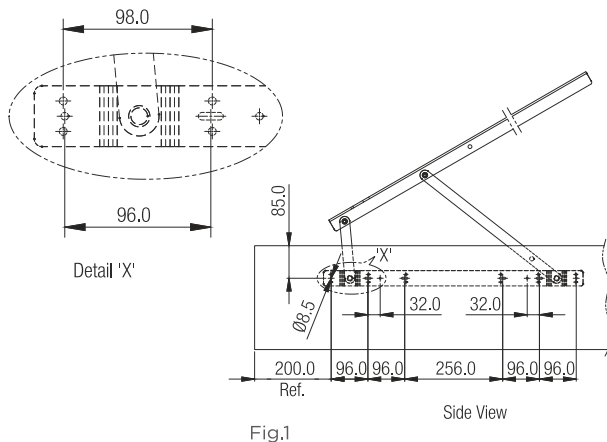
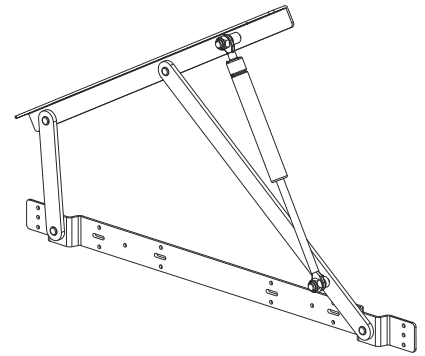


Fig. 2

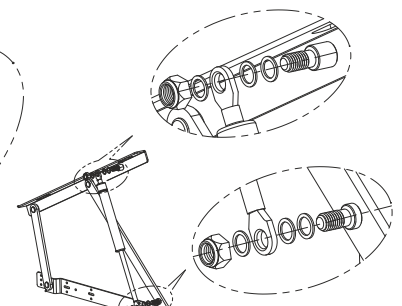
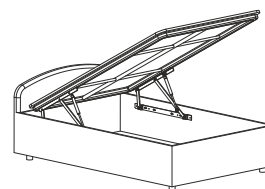


Fig.3

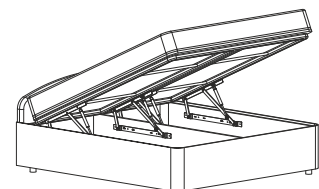
Caution

- Gas springs used are highly pressured, do not dismantle or damage and do not expose to heat or fire.
- Ensure that the top bed is locked properly with the bed frame.
- Do not tighten nut fully, Gas Spring should be able to rotate.

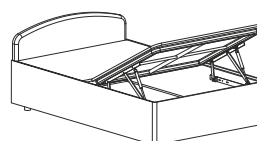
Different types of Applications (options)



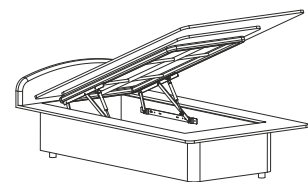
REGULAR



DOUBLE DUTY



HALF



OVERLAY