

Special Features

- Ideal for storage under bed.
- Can be tilted as well as lifted & flattened (with the weight of top board) with minimum force.
- Dual gas springs provided for tilting as well as lifting & flattening.
- 30° opening angle allows easy access to storage
- The gas lift keeps the bed top stay.
- Finish: Anthracite



Specifications

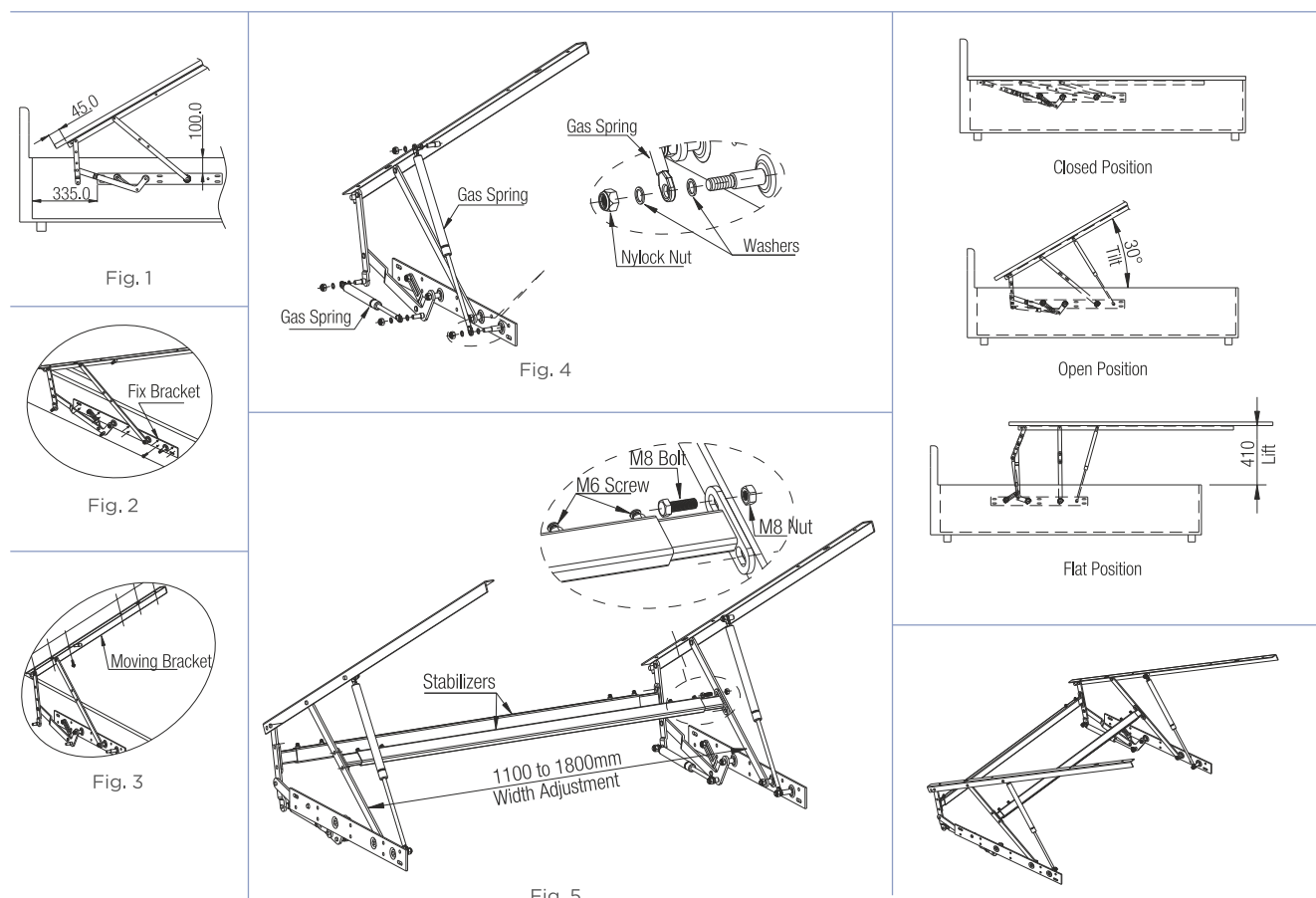
Code No.	Tilt	Lift	Recommended bed size	
			Width	Length
PLFBI-90-30	30°	410 mm	6 feet	6 to 6.5 feet

Fitting Instructions

1. Fit the Fix Bracket on bed frame as shown in Fig. 2. for dimensions refer Fig.1.
2. Place the bed platform onto the moving brackets & screw them as shown in Fig.3. For dimensions refer Fig.1.
3. Fix the gas springs with washers & nylock nuts provided as shown in Fig.4.
4. Loosen the M6 screws in the stabilizers & adjust the width (Width can be Adjusted from 1100 to 1800mm) & mount it with M8 Bolts & nuts provided as shown in Fig.5 & then tighten the M6 screws.

* Special Note:

Installation dimensions are only recommendation and will vary depending on type of construction design.



Caution

- Gas springs used are highly pressured, do not dismantle or damage and do not expose to heat or fire.
- Do not tighten nut fully, Gas Spring should be able to rotate.