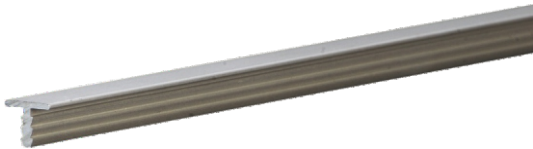


ALUMINIUM PROFILE DECORATIVE



Special Features

- Used for decorative purposes & lining to add design value to the furniture.
- Width of profile is 4mm, 7.6mm, 12mm & 25mm.
- Available in Anodized Silver & Anodized Special Finish.
- Length : 3mtr.



Specifications

Code Nos.	A	Finish
DP1-4-3M	4mm	AS/BL/ CP/BA/ SF/AG
DP1-7,6-3M	7,6mm	
DP1-12-3M	12mm	
DP1-25-3M	25mm	CP/BA

*Add after code : AS for Anodised Silver, SF for Special Finish, CP for Chrome Plated, BL for Black, BA for Brushed Aluminium, AG for Anodised Gold.

