



ALUMINIUM HANDLES & KNOBS

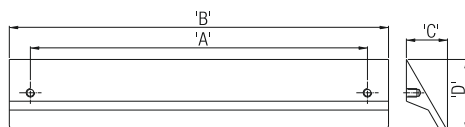
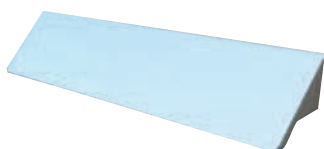


Special Features

- Variety of designs to select from.
- Ergonomically designed for good grip.
- Available in different lengths as per system - 32.
- Various finishes to suit your furniture.

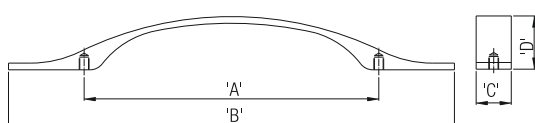


Aluminium Handle- A



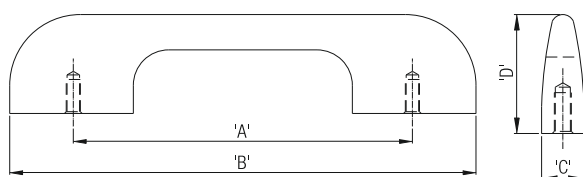
Item	Code Nos.	Finish	'A'	'B'	'C'	'D'
Aluminium Handle-A	AAH - 160	Anodized Silver	160	180	19	35
	AAH - 192		192	212	19	35
	AAH - 256		256	276	19	35
	AAH - 320		320	340	19	35

Aluminium Handle- B



Item	Code Nos.	Finish	'A'	'B'	'C'	'D'
Aluminium Handle-B	BAH 128 SF	Special Finish	128	197	20	24
	BAH 160 SF		160	229	20	24
	BAH 224 SF		224	293	20	24

Aluminium Handle - C



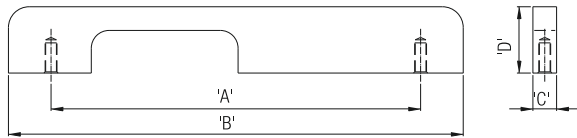
Item	Code Nos.	Finish	'A'	'B'	'C'	'D'
Aluminium Handle-C	CAH - 96 SF	Special Finish	96	132	10	28
	CAH - 160 SF		160	196	10	28
	CAH - 192 SF		192	228	10	28
	CAH - 320 SF		320	356	10	28



ALUMINIUM HANDLES & KNOBS

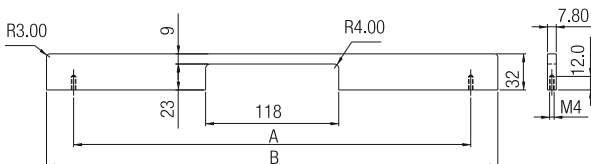


Aluminium Handle - C1



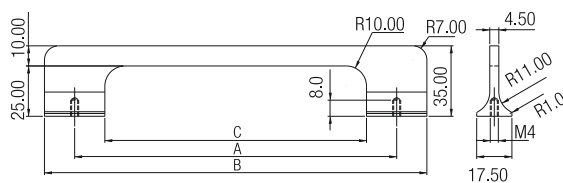
Item	Code Nos.	Finish	'A'	'B'	'C'	'D'
Aluminium Handle-C1	C1AH - 160	SL	160	180	8	30
	C1AH - 224		224	244	8	30
	C1AH - 288		288	308	8	30
	C1AH - 1088	CP/BA/AB	1088	1200	8	30

Aluminium Handle- C2



Item	Code Nos.	Finish	'A'	'B'
Aluminium Handle-C2	C2AH 224 AB	AB	224	272
	C2AH 288 AB		288	336
	C2AH 352 AB		352	400
	C2AH 224 AC	AC	224	272
	C2AH 288 AC		288	336
	C2AH 352 AC		352	400
	C2AH 224 CP	CP	224	272
	C2AH 288 CP		288	336
	C2AH 352 CP		352	400
	C2AH 224 AS	AS	224	272
	C2AH 288 AS		288	336
	C2AH 352 AS		352	400

Aluminium Handle- C3



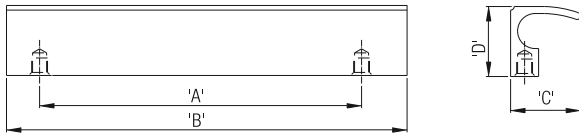
Item	Code Nos.	Finish	'A'	'B'	'C'
Aluminium Handle-C3	C3AH 160 CP	CP	160	190	130
	C3AH 224 CP		224	254	194
	C3AH 160 AB	AB	160	190	130
	C3AH 224 AB		224	254	194
	C3AH 160 AC	AC	160	190	130
	C3AH 224 AC		224	254	194



ALUMINIUM HANDLES & KNOBS

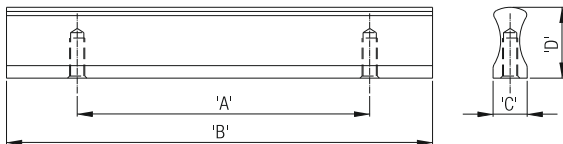


Aluminium Handle - G



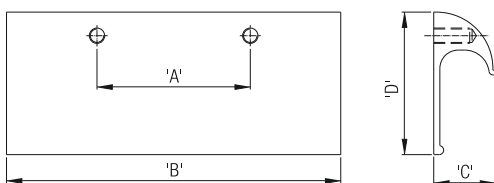
Item	Code Nos.	Finish	'A'	'B'	'C'	'D'
Aluminium Handle -G	GAH - 32	Silver	32	50	20	19.5
	GAH - 64		64	90	20	19.5
	GAH - 96		96	120	20	19.5
	GAH - 160		160	200	20	19.5
	GAH - 224		224	300	20	19.5
	GAH - 288		288	350	20	19.5
	GAH 96 SF	Special Finish	96	120	20	19.5
	GAH 160 SF		160	200	20	19.5
	GAH 224 SF		224	300	20	19.5

Aluminium Handle - I



Item	Code Nos.	Finish	'A'	'B'	'C'	'D'
Aluminium Handle -I	IAH - 32	Silver	32	50	9	17
	IAH - 64		64	90	9	17
	IAH - 96		96	120	9	17
	IAH - 160		160	200	9	17
	IAH - 224		224	300	9	17
	IAH 32 SF	Special Finish	32	50	9	17
	IAH 64 SF		64	90	9	17
	IAH 96 SF		96	120	9	17
	IAH 160 SF		160	200	9	17
	IAH 224 SF		224	300	9	17

Aluminium Handle- J



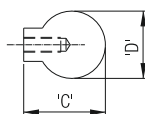
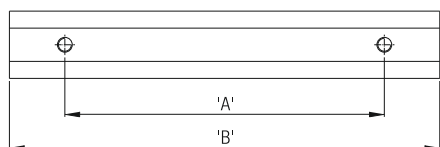
Item	Code Nos.	Finish	'A'	'B'	'C'	'D'
Aluminium Handle -J	JAH - 32	Silver	32	50	19.5	43
	JAH - 64		64	90	19.5	43
	JAH - 96		96	120	19.5	43
	JAH - 160		160	200	19.5	43
	JAH - 224		224	300	19.5	43
	JAH - 96 SF	Special Finish	96	120	19.5	43
	JAH - 160 SF		160	200	19.5	43
	JAH - 224 SF		224	300	19.5	43



ALUMINIUM HANDLES & KNOBS

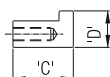
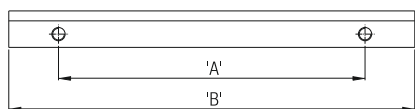


Aluminium Handle- K



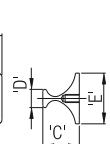
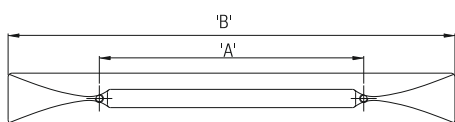
Item	Code Nos.	Finish	'A'	'B'	'C'	'D'
Aluminium Handle - K	KAH - 32	Silver	32	50	19,5	13
	KAH - 64		64	90	19,5	13
	KAH - 96		96	120	19,5	13
	KAH - 160		160	200	19,5	13
	KAH - 224		224	300	19,5	13
	KAH - 96 SF	Special Finish	96	120	19,5	13
	KAH - 160 SF		160	200	19,5	13
	KAH - 224 SF		224	300	19,5	13

Aluminium Handle - L



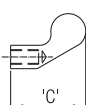
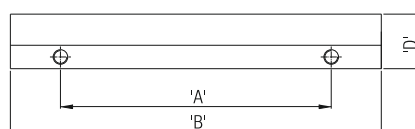
Item	Code Nos.	Finish	'A'	'B'	'C'	'D'
Aluminium Handle - L	LAH 96 SF	Special Finish	96	128	17	11
	LAH 160 SF		160	192	17	11
	LAH 224 SF		224	256	17	11

Aluminium Handle - M



Item	Code Nos.	Finish	'A'	'B'	'C'	'D'	'E'
Aluminium Handle - M	MAH 160 AB	AB	160	250	18	9	25
	MAH 224 AB		224	320	18	9	25
	MAH 160 CP	CP	160	250	18	9	25
	MAH 224 CP		224	320	18	9	25

Aluminium Handle - R



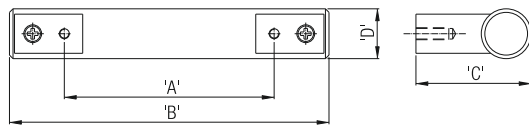
Item	Code Nos.	Finish	'A'	'B'	'C'	'D'
Aluminium Handle - R	RAH 96 SF	Special Finish	96	128	21	15
	RAH 160 SF		160	192	21	15
	RAH 224 SF		224	256	21	15



ALUMINIUM HANDLES & KNOBS

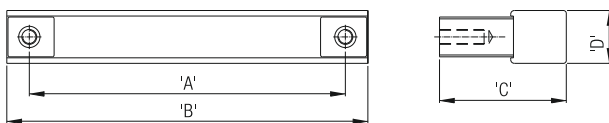


Aluminium Handle - RD



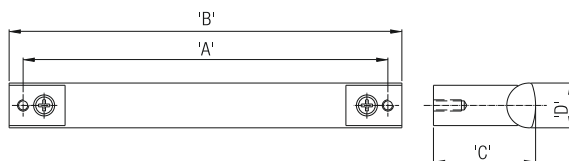
Item	Code Nos.	Finish	'A'	'B'	'C'	'D'
Aluminium Handle - RD	RDH 160 SF	Special Finish	160	198	39	18
	RDH 224 SF		224	262	39	18
	RDH 320 SF		320	358	39	18

Aluminium Handle - SQ



Item	Code Nos.	Finish	'A'	'B'	'C'	'D'
Aluminium Handle - SQ	SQAH 160 SF	Special Finish	160	176	37	16
	SQAH 224 SF		224	240	37	16
	SQAH 320 SF		320	336	37	16

Aluminium Handle - SR

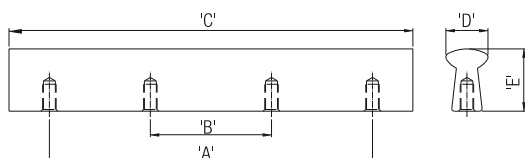
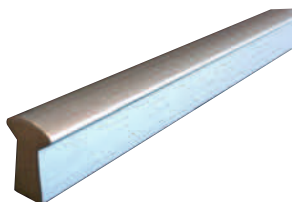


Item	Code Nos.	Finish	'A'	'B'	'C'	'D'
Aluminium Handle -SR	SRAH 224 AS	AS	224	234	36,5	16
	SRAH 288 AS		288	298	36,5	16
	SRAH 352AS		352	362	36,5	16
	SRAH 224 AC	AC	224	234	36,5	16
	SRAH 288 AC		288	298	36,5	16
	SRAH 352 AC		352	362	36,5	16



ALUMINIUM HANDLES & KNOBS

Aluminium Handle - Y



Item	Code Nos.	Finish	'A'	'B'	'C'	'D'	'E'
Aluminium Handle -Y	YAH 96	AS	96	---	120	12,5	18,5
	YAH 160		160	---	200	12,5	18,5
	YAH 224		224	---	300	12,5	18,5
	YAH 384		384	128	450	12,5	18,5
	YAH 512		512	192	600	12,5	18,5
	YAH 800		800	288	900	12,5	18,5
Aluminium Handle -Y Special Finish	YAH 96 SF	SF	96	---	120	12,5	18,5
	YAH 160 SF		160	---	200	12,5	18,5
	YAH 224 SF		224	---	300	12,5	18,5
	YAH 384 SF		384	128	450	12,5	18,5
	YAH 512 SF		512	192	600	12,5	18,5
	YAH 800 SF		800	288	900	12,5	18,5
Aluminium Handle - Y Metallic Blue	YAH 96 MB	MB	96	---	120	12,5	18,5
	YAH 160 MB		160	---	200	12,5	18,5
	YAH 224 MB		224	---	300	12,5	18,5
	YAH 384 MB		384	128	450	12,5	18,5
	YAH 512 MB		512	192	600	12,5	18,5
	YAH 800 MB		800	288	900	12,5	18,5

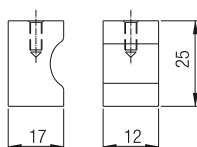
Aluminium Knob



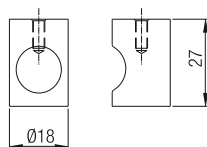
KNB 11 SF



KNB 32 SF



KNB 11 SF



KNB 32 SF

Item	Code Nos.	Finish
Aluminium Knob	KNB 11 SF	Special Finish
	KNB 32 SF	