

■ COMPUTER FURNITURE FITTINGS



Ergonomics @ Work

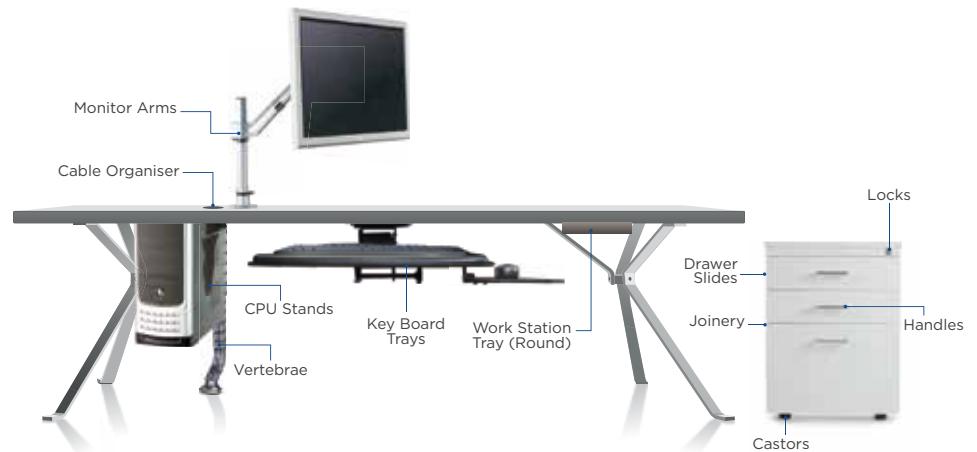


Choosing Office Furniture and Accessories is not the same as choosing your favourite colour or the latest in the market.

*Style ? Yes !
Elegance ? Yes !*

What about Ergonomics ?

The top priority in choosing Office Furniture accessories should be physical comfort and ease of use. One inch extra in the height of the workstation can bring productivity down by a few crores. That is the reason why Ebco Office Furniture Accessories have been designed to reduce fatigue and keep the workspace clutter free. The elegance enhances the pride while the style reduces the stress level of the employee. We are the largest manufacturer of furniture fittings in India. We should know.

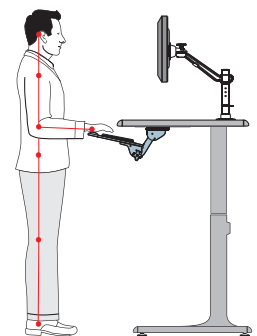


ERGONOMICS @ WORK

At the office, we usually spend the majority of our day generally unconcerned about the posture and position of our bodies while we work. Research says that for every 45 minutes of sitting, we need to take a break and stretch for 5 minutes. So if you have a desk that takes care of this, it will be ideal.

Ideal Standing Position at Work

- The height of the worktop should be set according to your height in such a way that you work without reaching or bending.
- The forearms should be parallel to the floor.
- Try to ensure that head, neck and wrists are in relaxed position & not forced up or down to work.
- The monitor should be at least 16" to 18" (or more depending upon screen size) in distance from your eye.
- The keyboard should be adjusted to a comfortable height that it allows the user to type with upper arms relaxed from the shoulder & forearms parallel to the floor.



Ideal Sitting Position at Work

- The height of the worktop should be set according to your height in such a way that you work without reaching or bending.
- The forearms should be parallel to the floor.
- Try to ensure that head, neck and wrists are in relaxed position & not forced up or down to work.
- The monitor should be at least 16" to 18" (or more depending upon screen size) in distance from your eye.
- The top line of the screen should be at your eye level so that the middle of the screen is approximately 20° downward for relaxed viewing.
- Your sitting height should be in such a way that the thighs are parallel to the floor, fully supported on the chair & feet firm on the floor. Use a foot rest for better support.
- The keyboard should be adjusted to a comfortable height that allows the user to type with upper arm relaxed from the shoulder and fore arm parallel to the floor.



SMART LIFT PRO 1

- Smart LiFT is height adjustable table legs that give you the flexibility to work sitting down or standing up, improving productivity and boosting your health.

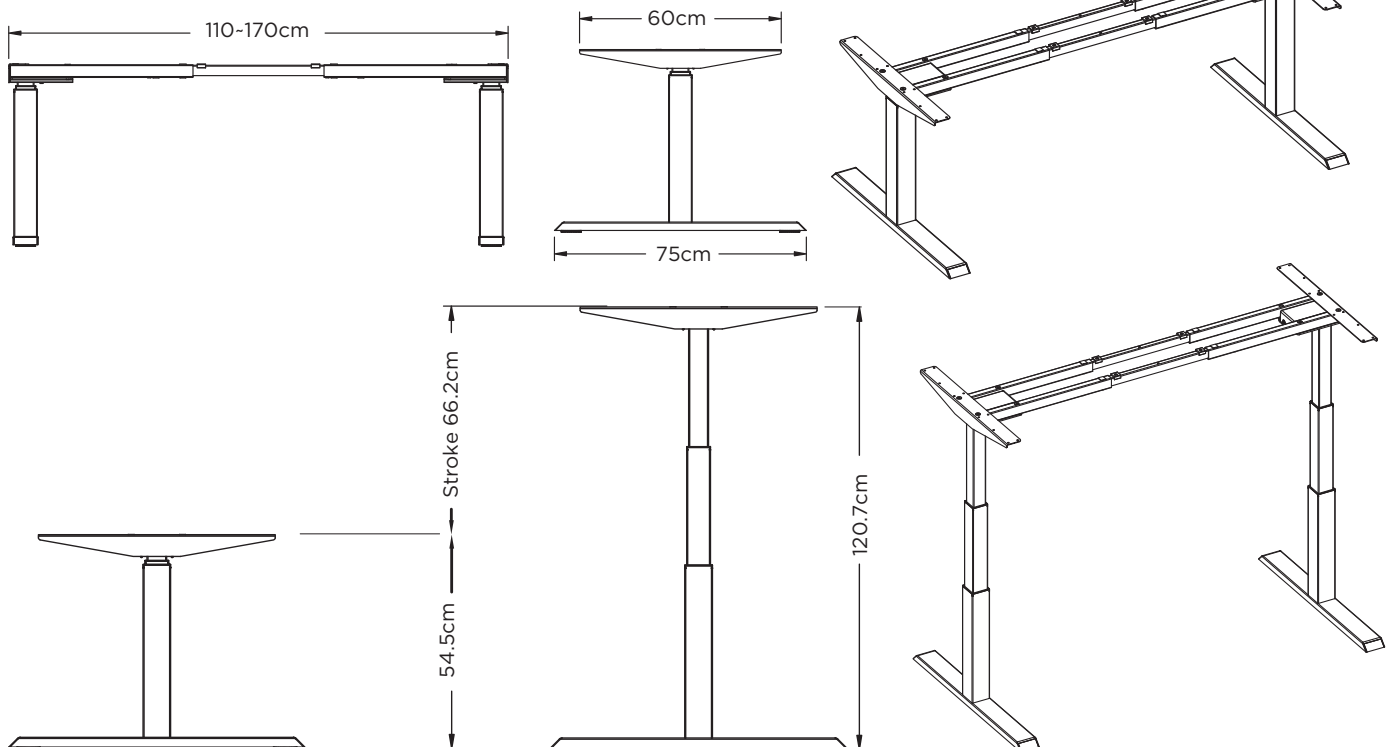


- Height (in cm) Display
- Height adjustability feature
- Four Height Memory Settings.
- Obstruction Sensors and Control
- Slide in / Slide out feature.



Code	Size in mm		Speed	Capacity	Finish
	Height	Width			
SLTLP1-E	545-1207	1100-1700	43mm/s	Dynamic: 80kg	Anthracite

- Minimum Frame Height : 54.5 cm
- Maximum Frame Height: 120.7 cm
- Stroke : 662 mm
- Capacity : Dynamic 160kg



SMARTLIFT - ELECTRIC



Touch control
for Up/Down
movement



Height
adjustment
680 - 1130 mm



Width
adjustment
1100 - 1700 mm

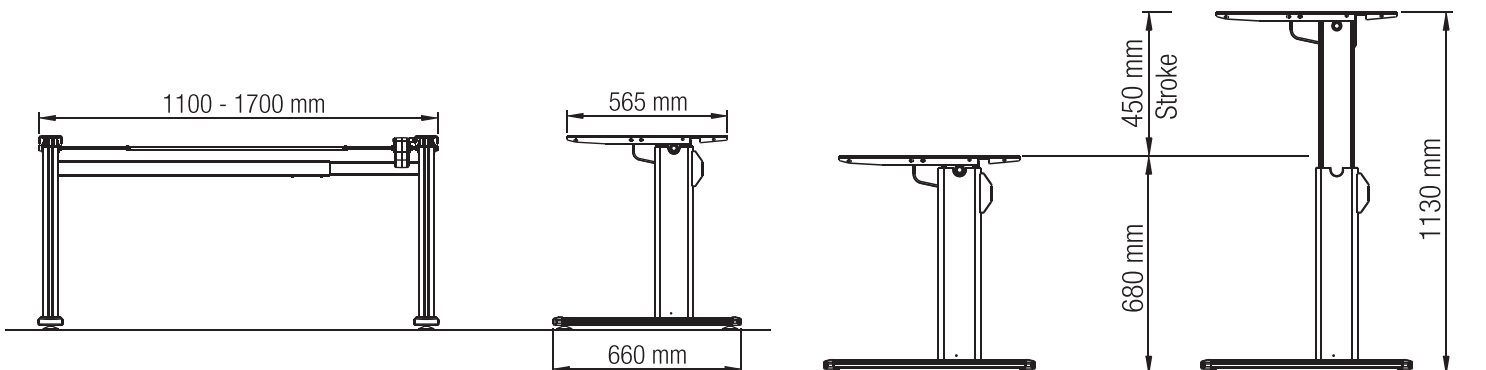


Floor Leveller

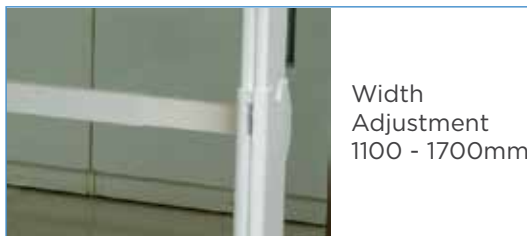
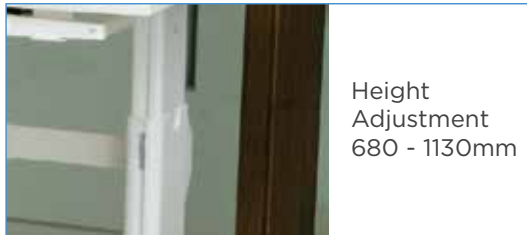


Code	Size in mm		Speed	Capacity	Finish
	Height	Width			
SLTL1-E	680 - 1130	1100- 1700	23mm/s	Dynamic: 60kg Static : 140 kg	Silver

- Ergonomically designed to enable easy installation & comfortable use.
- Table width can range from 1100mm to 1700mm.
- Height adjustment - 450mm.
- Special electric motor to raise or lower table.

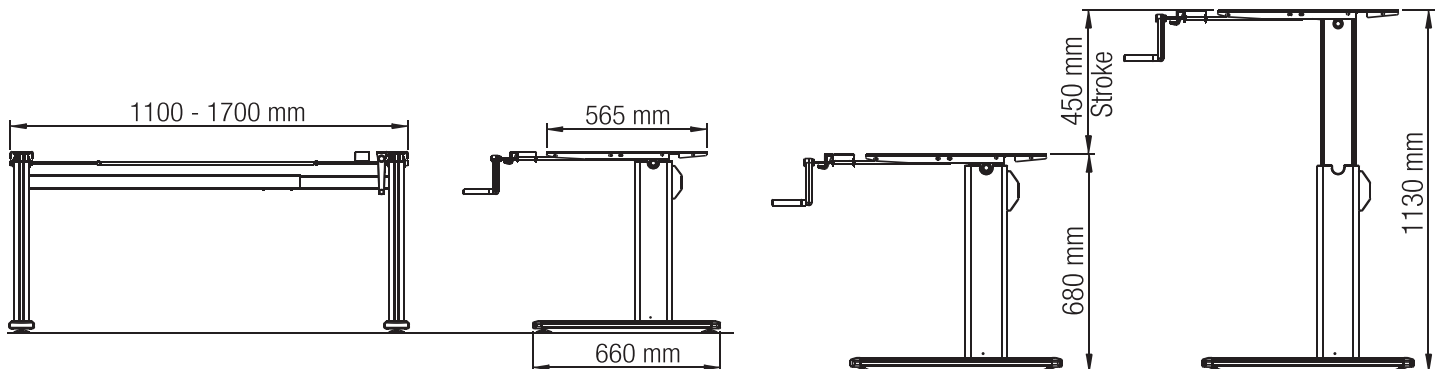


SMARTLIFT - MANUAL



Code	Size in mm		Speed	Capacity	Finish
	Height	Width			
SLTL1-M	680 - 1130	1100- 1700	6 / Crank Turn	Dynamic: 60kg Static : 140 kg	White

- Ergonomically designed to enable easy installation & comfortable use.
- Table width can range from 1100mm to 1700mm.
- Height adjustment - 450mm.
- Special manual crank to raise or lower table.



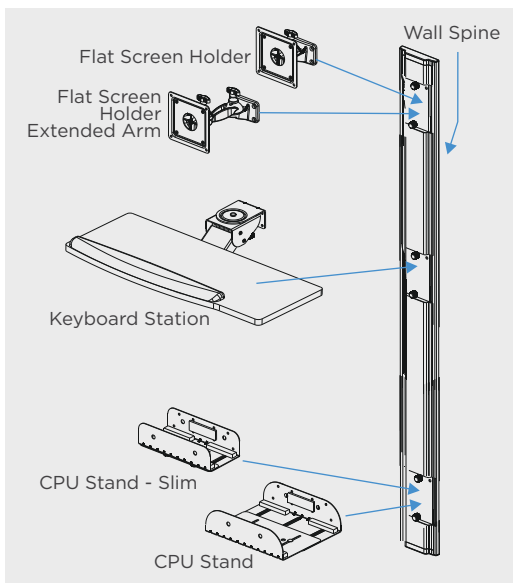
COMPUTER WALL STATION

- Modularly designed for all kinds of CPUs, Keyboards & Flat screen monitors.
- Perfect work station where space is limited.
- Height can be adjusted for convenience.
- Vertical track made out of aluminium alloy.
- Available in different optional fittings.



Computer Wall Station Compact

Choose your combination



Computer Wall Station

Item	Item Code	Size mm	Finish
Computer Wall Station	COMS-1	1300	SL/WW/AT
Computer Wall Station-Compact	COMS-2	800	SL/WW/AT
Tracks & Covers 1300 mm	COMS-TC13	1300	SL/WW/AT
Flat Screen Holder (with mounting bracket)	COMS-FS1	-	SL/WW/AT
	COMS-FS2	-	SL/WW/AT
Articulated K. B. Station Platform - Soft palm (with mounting bracket)	COMS-ASP	-	SL/WW/AT
CPU - Slim (with mounting bracket)		45- 95	SL/WW/AT
CPU - Regular (with mounting bracket)	COMS-CPU1	45- 95	SL/WW/AT

Application of Computer Wall Station



Corporate Offices, Laboratories, etc.



Public places, Hospitals, etc



Homes etc



Commercial Places, Restaurants etc

COMPUTER MONITOR ARM - SINGLE SCREEN

- Material : Aluminium & Steel
- Rotate: 360°
- Swivel: 180° Tilt: -85° /+90°
- Height Adjustable: 0-350mm
- Back & Forth Distance: 590 mm
- Integrated Cable Management
- Easy assembly & disassembly
- Die cast aluminium structure
- Hovering balance at any place
- VESA Standard: 75*75/100*100
- LCD Size:15"-27" (3-8KG)

Item Code	Finish
CMA-SS	WHITE



COMPUTER MONITOR ARM - DOUBLE SCREEN

- Material : Aluminium & Steel
- Rotate: 360°
- Swivel: 180° Tilt: -85° /+90°
- Height Adjustable: 0-350mm
- Back & Forth Distance: 570 mm
- Integrated Cable Management
- Easy assembly & disassembly
- Die cast aluminium structure
- Hovering balance at any place
- VESA Standard: 75*75/100*100
- LCD Size:15"-27" (3-8KG)

Item Code	Finish
CMA-DS	WHITE



FLAT SCREEN HOLDER SINGLE ARM

- Table Top Grommet Mounting with Single Arm.
- Height Adjustment of 100mm
- Compatible for VESA 75 x 75 & 100 x 100 with an extra plate.
- Die cast for good Aesthetics.
- Can be rotated towards left & right as well as Tilted up & down with a single knob.

Item Code	Finish
FSHSA	BL/SL/WW/AT



FLAT SCREEN HOLDER SINGLE ARM - EDGE MOUNT

- Table Top Edge Mounting with Single Arm.
- Easy to Fit.
- No Drilling of holes required.
- Height Adjustment of 100mm.
- Compatible for VESA 75 x 75 & VESA 100 x 100 with an extra plate.
- Die cast for good Aesthetics.
- Can be rotated towards left & right as well as tilted up & down with a single knob.

Item Code	Finish
FSHSA-EM	BL/SL/WW/AT



FLAT SCREEN HOLDER SINGLE ARM - TWIN

- Table Top Grommet Mounting for two flat screens on a single pole.
- Height Adjustment of 100mm.
- Compatible for VESA 75 x 75 & 100 x 100 with an extra plate.
- Die cast for good Aesthetics.
- Can be Rotated towards left & right as well as Tilted up & down with a single knob.

Item Code	Finish
FSHSAT	BL/SL/WW/AT



FLAT SCREEN HOLDER DOUBLE ARM

- Table Top Grommet Mounting with double arm.
- Height Adjustment of 100mm.
- Compatible for VESA 75 x 75 & 100 x 100 with an extra plate.
- Die cast for good Aesthetics.
- Can be Rotated towards left & right as well as Tilted up & down with a single knob.

Item Code	Finish
FSHDA	BL/SL/WW/AT



FLAT SCREEN HOLDER DOUBLE ARM - QUAD

- Table Top Grommet Mounting for four flat screen monitors on two poles.
- Easy to Fit.
- Height Adjustment of 100mm.
- Compatible for VESA 75 x 75 & 100 x 100 with an extra plate.
- Die cast for good Aesthetics.
- Can be Rotated towards left & right as well as Tilted up & down with a single knob.

Item Code	Finish
FSHDAQ	BL/SL/WW/AT



FLAT SCREEN HOLDER - WALL MOUNT

- Ideal for wall or partition mounting.
- Compatible for Vesa 75 mm & Vesa 100 mm with an extra plate.
- Direct mounting with system 32 holes.
- Can be rotated towards left & right as well as tilted up & down.
- Single knob for locking all adjustments.
- Die cast for good aesthetics.

Item Code	Size mm	Finish
FSHW-1	90	BL/SL/WW/AT



FLAT SCREEN HOLDER EXTENDED ARM - WALL MOUNT / FLAT SCREEN HOLDER - EXTENSION LINK (WITH KNOB & SPRING)

- Ideal for wall or partition mounting.
- Compatible for Vesa 75mm & Vesa 100mm with an extra plate.
- Can be rotated towards left & right as well as tilted up & down.
- Double locking knobs gives ample adjustment.
- Extended arm keeps the screen away from wall, thus gives ample place for rotation.
- Die cast for good aesthetics.

Item Code	Finish
FSHWE-2	BL/SL/WW/AT
FSH-EL1	



ARTICULATED KEYBOARD STATION

- New generation keyboard station has built in slide and adjustable keyboard holder.
- Stable durable design. Simultaneous adjustment.
- Can be tilted and rotated. Spring assisted to help counter balance.
- Soft palm rest and stowaway mouse pad.
- Functional design combined with elegant looks.
- Easy to assemble and transport.
- Low profile design for maximum leg room.
- 360° swivel allows user to move keyboard freely from side to side.

Model	Item Code	Finish
with Mouse Tray	AKS1 M	BL/AT
without Mouse Tray	AKS1	BL/AT



ARTICULATED KEYBOARD STATION - PLATFORM

- Functional design combined with elegant look. Low Profile Design.
- Single knob to adjust height & tilt angle of keyboard tray. Keyboard tilt adjustment range +10° to -20°.
- Simultaneous adjustment.
- Available with softpalm rest and stow away softpad.
- Platform is made out of high quality foil pressed on prelaminated MDF.

Model	Item Code	Finish
with Mouse Tray	ASPSM	BL/AT
without Mouse Tray	ASPS	BL/AT



ARTICULATED KEYBOARD STATION - ARM

- The easiest, most convenient keyboard arm mechanism.
- Easy to install.
- Special system 32 mounting plates provided to mount the required platform.
- Single knob to adjust height and tilt angle of keyboard tray.
- Simultaneous adjustment.
- Spring assisted to help counter balance.

Item Code	Finish
AKS-S4	BL/AT



ERGOMATE METAL

- Steel construction with aesthetic looks.
- Can be pulled out and rotated.
- Height adjustment available.
- Special non skid pad provided restrict the movement of keyboard while working.
- Easy to install.
- Simultaneous adjustment of movements with a single knob.
- Can be tilted or rotated and the height and reach can be adjusted allowing optimum comfort to user.
- Spring assisted to help counter balance.

Item Code	Finish
ERG-MKT1	Black



MULTI MEDIA KEYBOARD TRAY

- Steel construction with aesthetic looks.
- Can be pulled out and rotated.
- Height adjustment available.
- Easy to install.
- Special non skid pad provided to restrict the movement of keyboard while working.

Item Code	Finish
MKT 40	Black



COMPUTER KEYBOARD TRAY - ECO

- Simple and cost effective design.
- Direct front installation.
- Smooth quiet movement with telescopic slides.
- Unique angled hand rest to prevent fatigue while working.
- Special latch provided for locking.
- Max. load 12 kgs.

Model	Item Code	Size	Finish
with Mouse Tray	KTE1-35M	350	Powder Coated Black/Ivory
	KTE1-45M	450	
without Mouse Tray	KTE1-35	350	
	KTE1-45	450	
with Soft Pad, with Mouse Tray	KTES1-35M	350	
	KTES1-45M	450	
with Soft Pad, without Mouse Tray	KTES1-35	350	
	KTES1-45	450	



also available with Soft Palm

COMPUTER KEYBOARD TRAY

- Left or Right side retractable mouse pad tray. Also available with soft palm rest.
- Height adjustment on mounting brackets.
- Smooth quiet movement with telescopic slides. Removable drawer with latches.
- Unique angled hand rest to prevent fatigue while working.
- Available with 200 and 250 mm extension.
- Special compartment for pencil.
- Special pressure lock at extended position.
- Max. Load :12 kgs.



Keyboard Tray



Keyboard Tray with Soft Palm



Keyboard Tray Full Extension with Soft Pad

Model	Item Code	Size	Finish
with Mouse Tray	KBTM 35	350	Powder Coated Black/Ivory
	KBTM 45	450	
without Mouse Tray	KBT 35	350	
	KBT 45	450	

Model	Item Code	Size	Finish
with Mouse Tray	KTSM 35	350	Powder Coated Black/Ivory
	KTSM 45	450	
without Mouse Tray	KTS 35	350	
	KTS 45	450	

Model	Item Code	Size	Finish
without Mouse Tray	KTS25FE	250	Powder Coated Black

KEYBOARD TRAY CURVE

- Simple and cost effective design.
- Direct front installation.
- Comes with a formed pencil tray.
- Smooth quiet movement with telescopic slides. Unique arched hand rest to prevent fatigue while working.
- Special latch provided for locking.
- Max. load 12kgs.

Model	Item Code	Size	Finish
K. B. Tray - Curve (w/o Mouse Tray)	KBTC 35	350	Powder Coated Black/Ivory
	KBTC 45	450	
K. B. Tray - Curve (with Mouse Tray)	KBTC 35M	350	
	KBTC 45M	450	



COMPUTER KEYBOARD TRAY - JUMBO

- Made for extra large multimedia keyboard.
- Height adjustment on mounting brackets.
- Smooth quiet movement with ball bearings.
- Removable drawer with latches.
- Special pressure lock at extended position.
- Has specially designed palm rest.

Item Code	Size	Finish
KBTJ 1	450	Powder Coated Black / Ivory



COMPUTER KEYBOARD PLATFORM WITH SOFT PALM

- Platform made out of high quality foil pressed on prelaminated MDF.
- Left or Right side swivel mouse pad tray.
- Height adjustment on mounting brackets.
- Smooth quiet movement with telescopic slides. Removable drawer with latches.
- Also available unique soft pad hand rest to prevent fatigue while working.
- Special pressure lock at extended position.
- Max. Load : 12 kgs.

Model	Item Code	Size	Finish
with Mouse Tray	KPSM 35	350	Black
	KPSM 45	450	
without Mouse Tray	KPS 35	350	
	KPS 45	450	



For special finishes in Wood or Metallic silver, add 'WD' or 'SL'.

PLASTIC KEYBOARD BASE / WITH SLIDING MOUSE TRAY

- An elegant cost effective option.
- Manufactured out of PP.
- Option of sliding mouse tray on steel brackets.
- It also has a pencil compartment built into an ergonomics palm rest.
- Can be used with 'Eco' Keyboard Slide.
- Available in Black and Grey Colour.

Model	Item Code	Finish
Plastic Keyboard Base	PPK 1	Black/Grey
Plastic Keyboard Base with Sliding Mouse Tray	PPKM 2	Black/Grey



Recommended Slides CKSC 35 (I), CKDS 45.

CPU STATION WITH LOCK

- Ideal for storage of C.P.U. under the table.
- Unique Locking Lever helps lock the Side Locking Bracket in place.
- C.P.U. can be pulled out and swiveled.
- Security Lock with keys incorporated in design.
- Safe Load: 20Kgs.

Item Code	Finish
CPUSL	BL/AT/WH



CPU STATION Design Reg. 217362

- Ideal for storage of C.P.U. under the table.
- Unique locking lever helps lock the side locking bracket in place.
- C.P.U. can be pulled out and swiveled.
- Safe Load: 20Kgs.

Item Code	Finish
CPUSN	BL/AT/WH



CPU STAND

- Computer C.P.U. Stand for storage of C.P.U. unit conveniently under the table.
- This saves valuable desk top space.
- Soft vibration pads provided.
- Width adjustment then 115-210mm provided.
- Safe Load: 25Kgs.

Item Code	Finish
CPUS 1	BL/SL/IV/WH



CPU STAND - ECO

- Computer C.P.U. Stand for storage of C.P.U. unit conveniently under the table.
- This saves valuable desk top space.
- Soft vibration pads provided.
- Width adjustment then 115-210mm provided.
- Safe Load: 12Kgs.

Item Code	Finish
CPUS E1	BL/SL/IV/WH



TELESCOPIC CPU STAND

- Stores C.P.U. under the table.
- Saves valuable working space.
- Soft anti-vibration pads provided.
- Width adjustment from 145 mm to 225 mm.
- Height adjustment from 310 mm to 530 mm.
- 530 mm. Safe load - 20kgs.
- No tools needed for adjusting height and width range.
- Material - Steel.
- Finish - Powder Coated.

Item Code	Finish
CPUS (T)1	BL/AT/WH



TELESCOPIC CPU STAND - SLIM

- Ideal for compact / small CPUs.
- Also stores UPS below the table.
- Top mount and saves floor space.
- Soft anti-vibration pads provided.
- Width adjustment from 45 mm to 100 mm.
- Height adjustment from 310 mm to 530 mm.
- No tools needed for adjusting height and width range.
- Safe load - 20 Kgs.
- Material - Steel.

Item Code	Finish
CPUS-TS	BL/AT/WH



TELESCOPIC CPU STAND - SWIVEL & PULLOUT Design Reg. Pending

- Stores C.P.U. under the table.
- Saves valuable working space.
- 360° Swivelling and Pullout for easy access to the rear of the CPU.
- Direct mounting, no assembly.
- Soft anti-vibration pads provided.
- Width adjustment from 145mm to 225mm.
- Height adjustment from 310mm to 530mm.
- No tools needed for adjusting height and width range.
- Extension available is 310 mm
- Safe load - 20kgs.
- Material - Steel.
- Finish - Black Powder Coated.

Item Code	Finish
CPUS (T)2	BL/AT/WH



SIDE MOUNTING CPU STAND

- Saves valuable working space.
- Direct mounting, no assembly.
- Soft anti-vibration pads provided.
- Width adjustment from 145mm to 225mm.
- No tools needed for adjusting width range.
- Safe load - 20 kgs.
- Material - Steel.
- Finish - Black powder coated.

Item Code	Finish
CPUSM	BL/AT/WH



SIDE MOUNTING CPU STAND-SLIM

- Saves valuable working space.
- Direct mounting and no assembly.
- Soft anti vibration pad provided.
- No tools needed for adjusting width range.
- Width adjustment from 45mm - 100mm
- Safe load - 20kgs.

Item Code	Finish
CPUSM-S	BL/AT/WH



TABLET HOLDER

- For Apple iPad, Kindle Fire, Galaxy Tab and other 7" -10" tablets PC.
- Foldable, compact and easy to carry around.
- Flexibility to position your device at multiple angles in landscape or portrait view.
- Size: 18cm x 2.6cm x 3.2cm.

Item Code	Finish
TH 1BL	Black
TH 1WH	White



ROLL TOP

- Ideal for environments where floor space is essential.
- Total access to the shelves and their doors do not interfere with accessibility.
- Optimum sliding quality & quite operation.
- High light resistance.
- Resistance to chemical agents used to clean furniture.
- Ease of use and fast installation.



Horizontal

Item Code	Size (mm) WxH	Finish
RTH 100195 SL	1000 x 1950	Silver
RTH 100195 FW	1000 x 1950	Frosty White
RTH 80100 SL	800 x 1000	Silver
RTH 80100 FW	800 x 1000	Frosty White
RTH 60120 SL	1200 x 600	Silver
RTH 60120 FW	1200 x 600	Frosty White



Vertical

Item Code	Size (mm) WxH	Finish
RTEV 45130 SL	450 x 1300	Silver
RTEV 45130 SF	450 x 1300	Special Finish
RTEV 45130 WE	450 x 1300	Wenge
RTEV 45130 WM	450 x 1300	Maple
RTEV 45130 FG	450 x 1300	Frozen Glass (Plastic)
RTEV 45135 GW	450 x 1350	Glossy White
RTEV 45135 SA	450 x 1350	Satin Aluminium
RTEV 60130 SL	600 x 1300	Silver
RTEV 60130 SF	600 x 1300	Special Finish
RTEV 60130 WE	600 x 1300	Wenge
RTEV 60130 WM	600 x 1300	Maple
RTEV 60130 FG	600 x 1300	Frozen Glass (Plastic)
RTEV 60135 GW	600 x 1350	Glossy White
RTEV 60135 SA	600 x 1350	Satin Aluminium
RTEV 90130 SL	900 x 1300	Silver
RTEV 90130 SF	900 x 1300	Special Finish
RTEV 90130 WE	900 x 1300	Wenge
RTEV 90130 WM	900 x 1300	Maple
RTEV 90130 FG	900 x 1300	Frozen Glass (Plastic)
RTEV 90135 GW	900 x 1350	Glossy White
RTEV 90135 SA	900 x 1350	Satin Aluminium

FOOT REST

- Designed to keep your feet supported and comfortable keeping the blood circulation regular.
- It can help to prevent Varicose veins and pressure on the Achilles tendon which are caused for being seated for long hours.
- Made of high impact polystyrene.
- Tilts (0°-20°) to provide the most comfortable angle.
- Large platform: 450 X 350 mm.
- Non-slip surface enhances overall stability.

Item Code	Size	Finish
FR 2	450 x 350	Black



WORK STATION TRAY

- This tray fits perfectly on the top edge of a drawer in a work station.
- Aesthetically designed with both, utility and end user in mind.
- This tray augments the looks and feel of any work station.
- Manufactured out of A.B.S. for strength and long life.
- Smaller tray economy model available.

Item Code	Size	Finish
WST 14-6	355 x 151	Black / Ivory



WORK STATION TRAY (ROUND)

- This tray can be fitted to any table.
- Since this tray is directly mounted underneath the table, no drawers are required.
- System 32 compatible.
- 360° rotation for easy accessibility.
- Aesthetically designed with both, utility and end user in mind.
- This tray augments the looks and feel of any work station.
- Manufactured out of Durable Plastics for strength and long life.

Item Code	Size	Finish
WSTR-9	Ø220	Black / Ivory



ELECTRIC BOX

- Aluminium Construction.
- Soft close Optional.
- Available in 6 Module, 8 Module, 10 Module and 12 Module.

Item	Model	Code Nos.	Size (mm)	Finish
Electric Box 6 Module	6 Module w/o Soft Close & Shield	EB-6M	219x119x51	Black, Window White, Silver
	6 Module with Soft Close & w/o Shield	EB-6MSC	219x119x51	
	6 Module w/o Soft Close & with Shield	EB-6MS	219x119x103	
	6 Module with Soft Close & Shield	EB-6MSCS	219x119x103	
Electric Box 8 Module	8 Module w/o Soft Close & Shield	EB-8M	268x119x51	
	8 Module with Soft Close & w/o Shield	EB-8MSC	268x119x51	
	8 Module w/o Soft Close & with Shield	EB-8MS	268x119x103	
	8 Module with Soft Close & Shield	EB-8MSCS	268x119x103	
Electric Box 10 Module	10 Module w/o Soft Close & Shield	EB-10M	316x119x51	
	10 Module with Soft Close & w/o Shield	EB-10MSC	316x119x51	
	10 Module w/o Soft Close & with Shield	EB-10MS	316x119x103	
	10 Module with Soft Close & Shield	EB-10MSCS	316x119x103	
Electric Box 12 Module	12 Module w/o Soft Close & Shield	EB-12M	364x119x51	
	12 Module with Soft Close & w/o Shield	EB-12MSC	364x119x51	
	12 Module w/o Soft Close & with Shield	EB-12MS	364x119x103	
	12 Module with Soft Close & Shield			

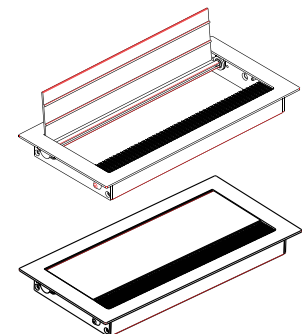


ELECTRIC BOX SLIM

NEW

- Gives access to switches beneath the table.
- Elegant design.
- Built in Soft Close Mechanism.
- Easy installation.
- Available in 4 different lengths.

Item	Code Nos.	Size (mm)	Finish
Electric Box Slim 20	EBS 20	220x132x27	WH/AT/ SL/BL
Electric Box Slim 25	EBS 25	270x132x27	
Electric Box Slim 30	EBS 30	320x132x27	
Electric Box Slim 35	EBS 35	370x132x27	



UTILITY FLIP BOX

- Gives access to switches beneath the table.
- Elegant design.
- Easy installation.
- Doubles as stationery box.
- Size : External : 300 x 145
- Cut out : 126 x 284

Item Code	Finish
UFB512	Silver



VERTEBRAE (OVAL)

- Ideal for concealing electrical and data cables separately at a work station in an organized way.
- Enhances the look of furniture.
- Manufactured out of plastic and is flexible.
- Size - 780.

Item Code	Size	Finish
Vertebrae Oval	VO2	White / Grey / Black



VERTEBRAE (ROUND)

- Ideal for an organized concealing of electrical and data cables separately in four compartments at a work station.
- Enhances the look of furniture.
- Manufactured out of plastic and is flexible.
- Size : 850L, Ø65.

Item Code	Size	Finish
Vertebrae Round	VR 1C	Clear



HORIZONTAL VERTEBRAE

NEW

- Ideal for Concealing Horizontal Electrical and Data Cables separately at a work station in an organized way.
- Enhances the look of your Furniture.
- Manufactured out of Durable Plastic.
- Each set consists of 4 Connectors & 1 Clip.
- Available in Three Finishes.

Item Code	Size	Finish
Vertebrae Round	VOH1	WH/GR/BL



CABLE ORGANIZER

- Manufactured out of plastic.
- This unique design has 3 port selection to suite different number of cables.
- Available in Black, Ivory and Grey colours.

Item	Item Code	Finish
Cable Organizer Ø53	CO53	Black/ Ivory/ Grey
Cable Organizer Ø60	CO60	
Cable Organizer Ø80	CO80	Black



CABLE ORGANIZER - ZINC

- Die Cast and Zinc Plated.
- Available in grommet size of Ø60 and Ø80.

Item	Item Code	Finish
Cable Organizer Ø60	CO 60ZN1	Zinc White
Cable Organizer Ø80	CO 80ZN1	



CABLE MANAGER - Ø 20 & Ø 40

- Simple and elegant in appearance.
- Ideal for managing cables underneath the table.
- Protects users from coming direct contact with cable.
- Available in two sizes: Ø20 and Ø40 in length of 500mm.
- Easy Stick-on installation and screw mounting provision.

Item	Item Code	Finish
Cable Manager Ø40	CM 4050	White
Cable Manager Ø20	CM 2050	



CABLE TRAY - SS

- Simple and elegant in appearance.
- Ideal for cables underneath the table.
- Protects cables and users.
- Manufactured out of stainless steel.
- Available in two sizes.

Item	Size	Finish
CT 30	300mm	SS
CT 50	500mm	



TABLE PARTITION CLAMP - TOP MOUNT

- Aesthetically designed.
- Can be used for board as well as glass partitions.
- Side screws provided for better grip to the partition.
- Can be used for thickness between 6mm to 20mm.
- Special Plastic Pads provided for better grip & glass protection.

Item Code	Size	Finish
TPC2-620	6-20mm	PC



TABLE PARTITION CLAMP - EDGE MOUNT

- Aesthetically designed.
- Can be used for wood as well as glass partitions.
- Side screws provided for better grip to the partition.
- Can be used for thickness between 6mm to 20mm.
- Special Plastic Pads provided for better grip & protection.
- For table top edge installation.

Item Code	Partition Thickness	Finish
TPC2-620EM	6-20mm	PC



MODESTY PANEL CLAMP

- Aesthetically designed.
- Provides below work surface modesty for Wood / Glass.
- Can be used for thickness between 4mm to 12mm.

Item Code	Finish
MPC1	White / Chrome Plated



VENTILATION GRILL

- Ideal to be used where ventilation is required like in CPU cabinets, appliance cabinets, shoe racks, etc.
- Cut out size: 360 x 100mm.

Item Code	Finish
VG414	Grey / Black



VENTILATION GRILL DIA 40MM

- Ideal to be used where ventilation is required like in cabinets and drawers, especially for gas cylinders, wardrobes, etc.
- Made out of durable plastic.
- Easy to fit.

NEW

Item Code	Finish
VG-40	BL/GR/WH



VENTILATION GRILL - RECTANGULAR

- Ideal to be used where ventilation is required like in cabinets and drawers, especially for gas cylinders, wardrobes, etc.
- Made out of durable plastic.
- Easy to fit.

NEW

Item	Finish
VG-34168	BL/GR/WH



MODULAR GALLERY FITTING

- Manufactured out of durable plastic with aluminium extruded rails duly anodized.
- Aluminium rails available in 1 metre length width and without perforation.
- Easy to fit and System 32 compatible.

Item	Code	No of Sets	Length(mm)
Base (L & R)	MGF - A	2	-
Top Connector	MGF - B	2	-
Facia Connector	MGF - C	2	-
Partition Bracket	MGF - D	2	-
Al. Profile Rail (Perforated)	MGF - R1 1	1	1m
	MGF - R1 2	1	2m
Al. Profile Rail	MGF - R2 1	1	1m
	MGF - R2 2	1	2m



For Office

MULTI PURPOSE BIN

- This elegantly designed bin is suited for multiple utilities in offices, kitchens, Bathrooms, etc.
- It is easy to install and cost effective.
- With 13 liters capacity, makes the bin useful at any given place.
- Available in black and light grey finish.

Item Code	Size	Finish
MPBI-13	13 ltr.	Grey / Black



GLASS HOLDER - WALL MOUNT

- Aesthetically designed.
- Easy to use.
- Manufactured out of durable plastic.

Item Code	Finish
GHW 1	Black



CD RACK

- Designed to hold upto 10 CDs.
- Made out of Nylon.
- Easy to fit in any cabinet or workstation & safe for storing CDs.
- Special clips hold the Cd's safely.

Item Code
CDR 10



www.ebco.in



EBCO Pvt.Ltd

402-3, Hyde Park, Saki Vihar Road, Mumbai 400072, INDIA

Tel : +91 22 67837777 | Fax : +91 22 66920700

Email : info@ebco.in | Web : www.ebco.in