

POLE SHELVING SYSTEMS & ACCESSORIES

Space Creating Solutions!







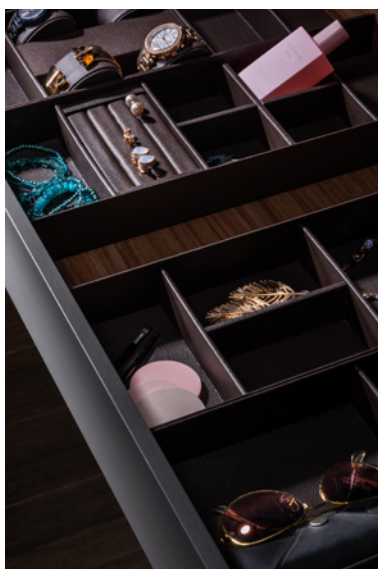
Ebco Pole Shelving System
Versatility that looks
good on your walls.





Space saving is out. Space creation is in. With Livsmart Pole Shelving Systems, create the perfect combination of closed and open storage and shelving to suit individual needs with a wide choice of fittings that will make your living room, bedroom and even your retail store look more open and spacious!

With a wide variety of durable and aesthetically designed units, there is no limit to the permutations and combinations in which space can be created!



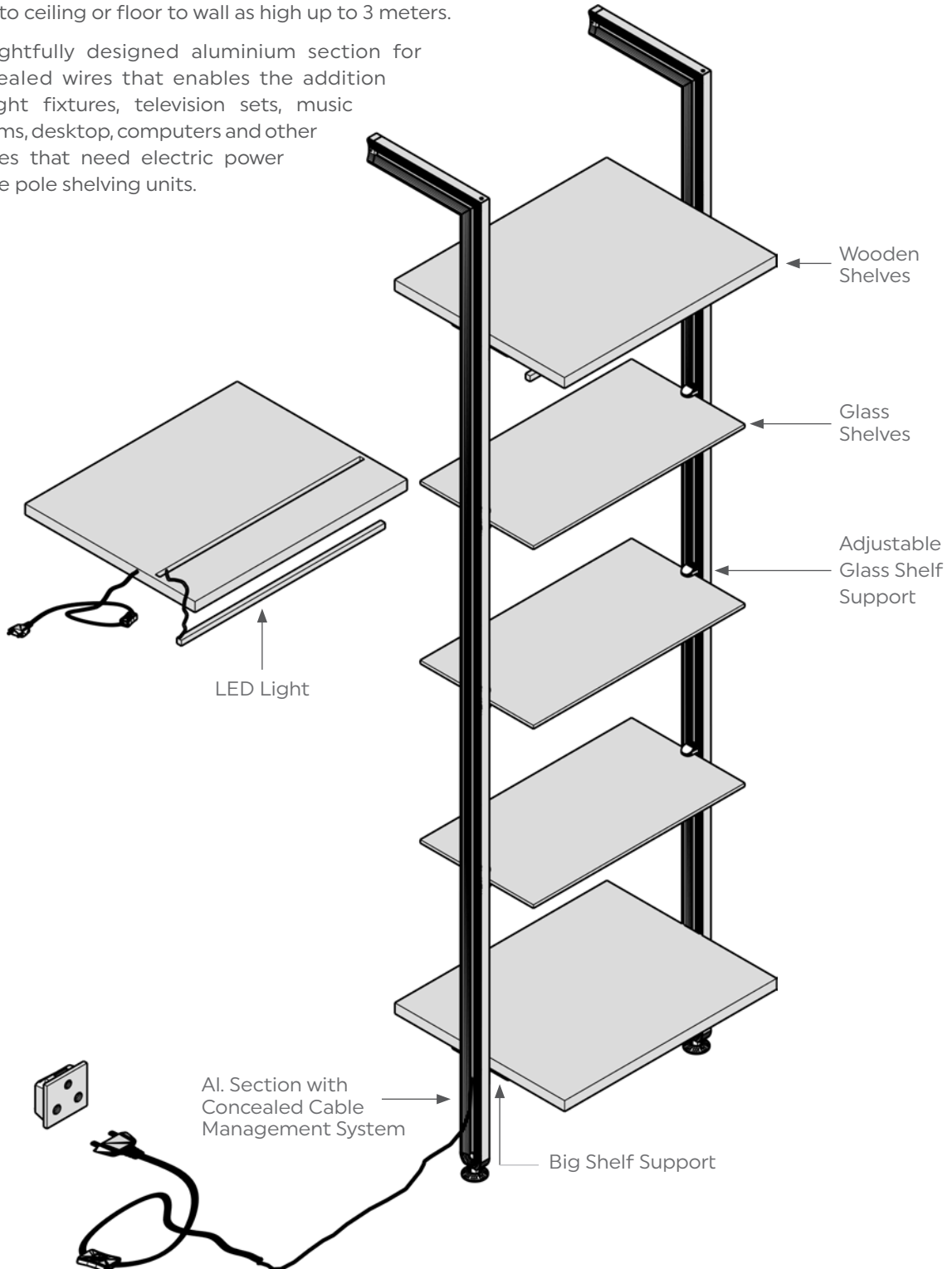
CONTENTS

1. INTRODUCTION 6
2. SPECIAL FEATURES 7
3. POLE SHELVING SYSTEM - COMPONENTS 8
4. LIBRARY / BOOKSHELF APPLICATION 12
5. LIVING ROOM APPLICATION 13
6. STUDY / WORK FROM HOME APPLICATION 15
7. WALK-IN WARDROBE APPLICATION 17
8. BEDROOM APPLICATION 18
9. BATHROOM APPLICATION 19
10. RETAIL APPLICATION 21
11. HI SLIDE WALK-IN SLIDING SYSTEM 22
12. WALK-IN SLIDING LOCKS 25
13. WARDROBE ACCESSORIES 27
14. FURNITURE LIGHTS LED - 24V 32

INTRODUCTION

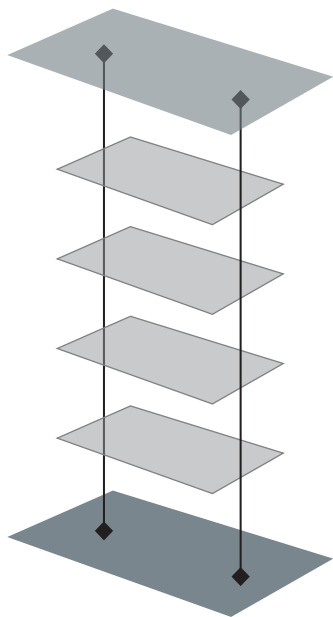
A sophisticated shelving system minimal by design, versatile and exceptionally flexible. Wide range of adaptors/brackets for shelves, cabinets, hangers and pullout baskets makes it a designer's choice due to its functionality. These can be mounted from floor to ceiling or floor to wall as high up to 3 meters.

Thoughtfully designed aluminium section for concealed wires that enables the addition of light fixtures, television sets, music systems, desktop, computers and other devices that need electric power on the pole shelving units.

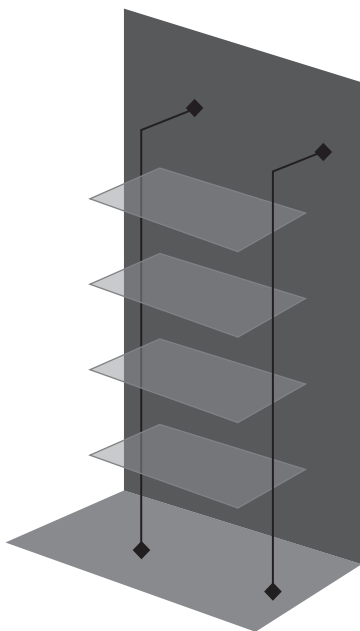


SPECIAL FEATURES

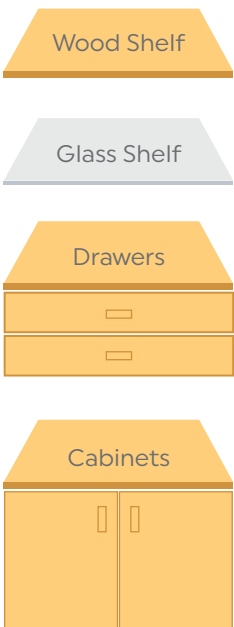
Floor to Ceiling Installation



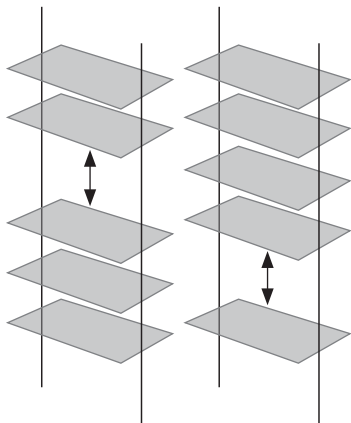
Floor to Wall Installation



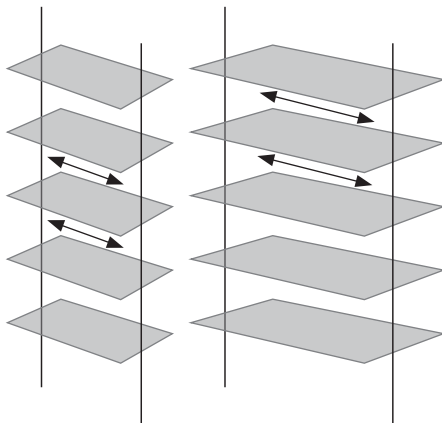
Adapters available for:



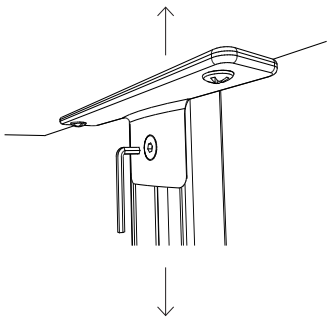
Height Adjustment of Shelf



Width Adjustment of Pole



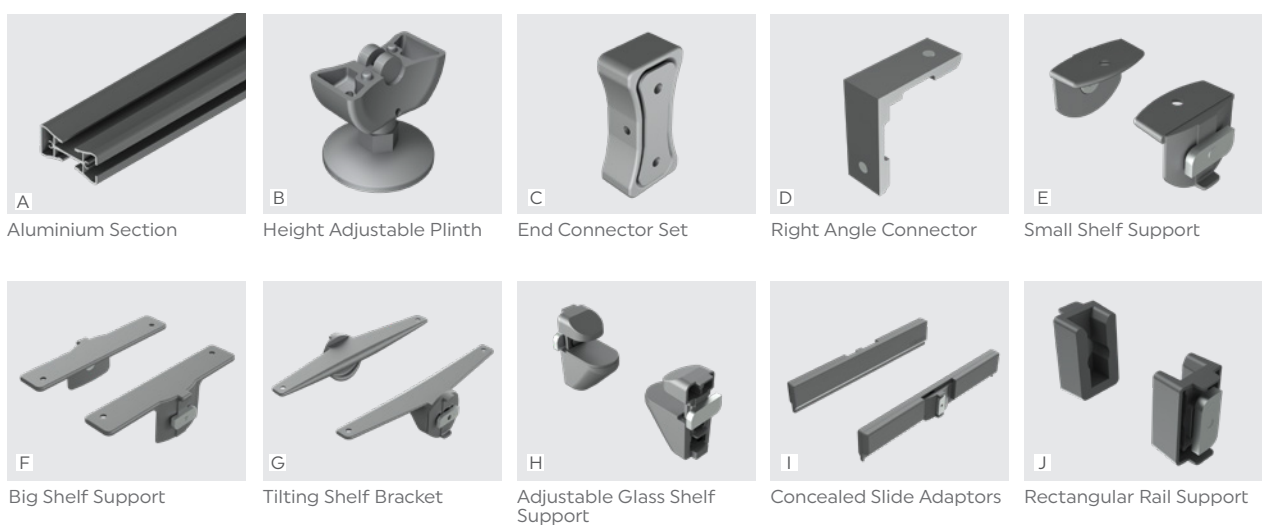
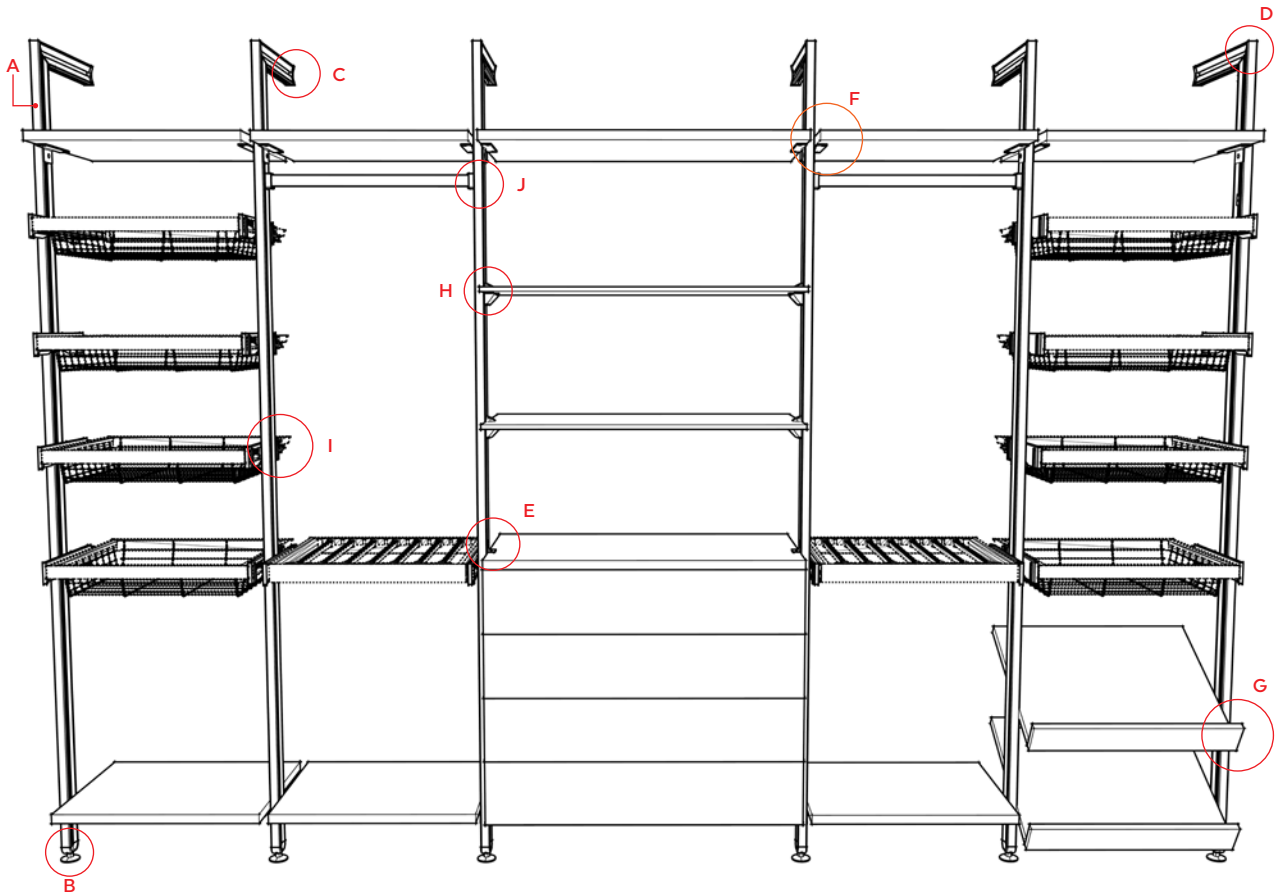
Tighten/Loosen the allen screw for shelf height adjustment



AVAILABLE FINISHES



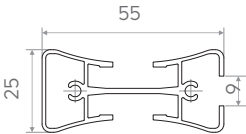
POLE SHELVING SYSTEM - COMPONENTS



POLE SHELving COMPONENTS

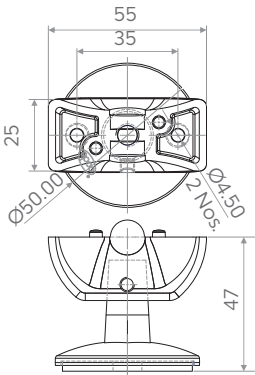
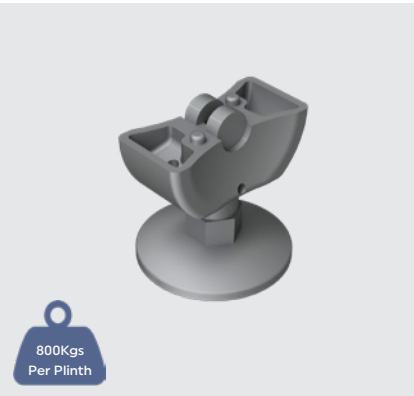
Aluminium Section

CODE: PPDS - ALS
LENGTH: 3mtr



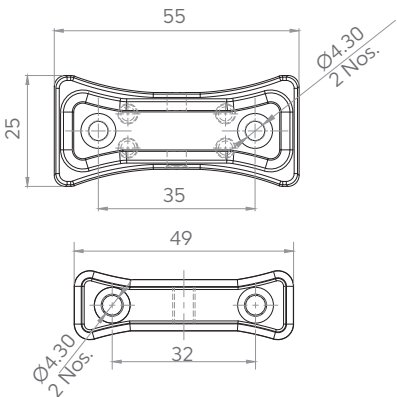
Height Adjustable Plinth

CODE: PPDS - HAP



End Connector Set

CODE: PPDS - ECS



POLE SHELVING COMPONENTS

Right Angle Connector

CODE: PPDS-RAC



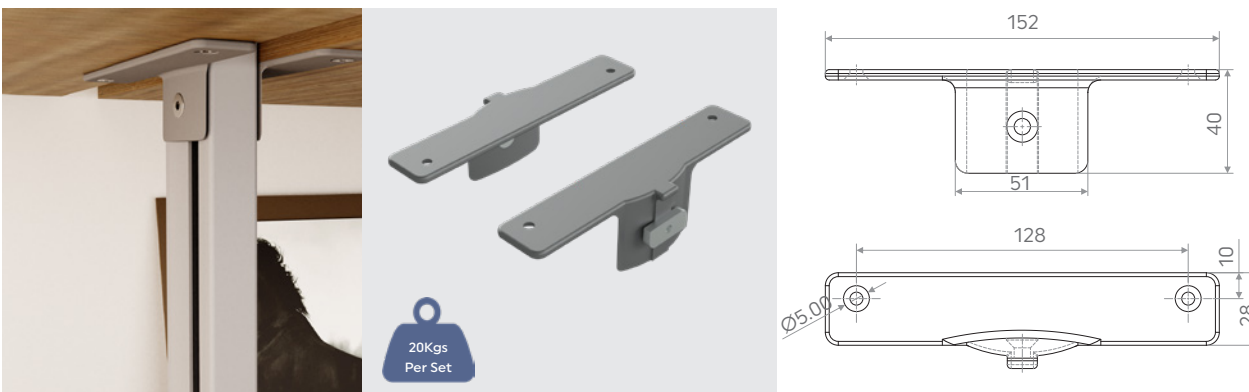
Small Shelf Support

CODE: PPDS - SSS



Big Shelf Support

CODE: PPDS - BSS



POLE SHELVEING COMPONENTS

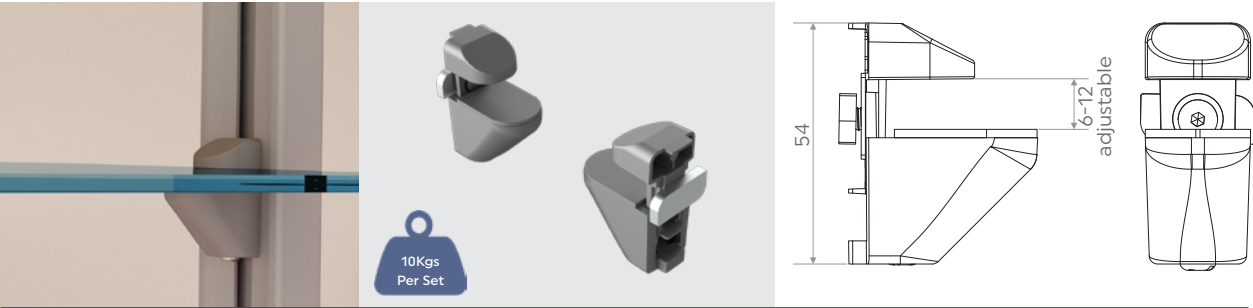
Tilting Shelf Bracket

CODE: PPDS - TSB



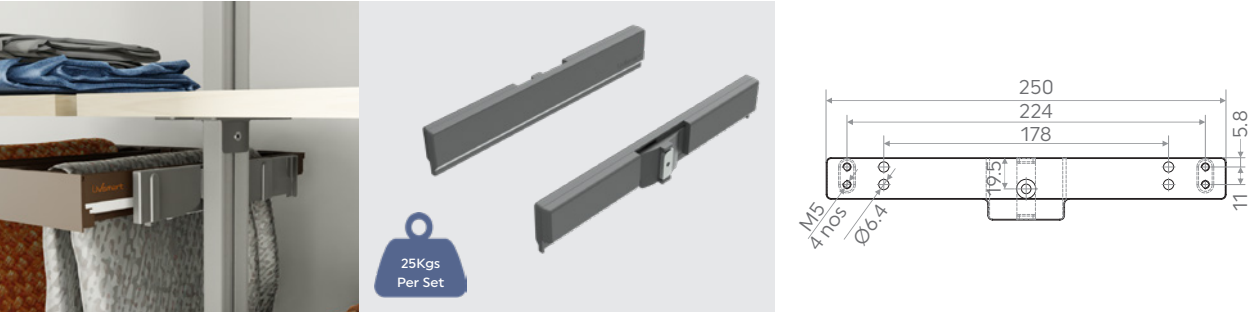
Adjustable Glass Shelf Support

CODE: PPDS - AGS



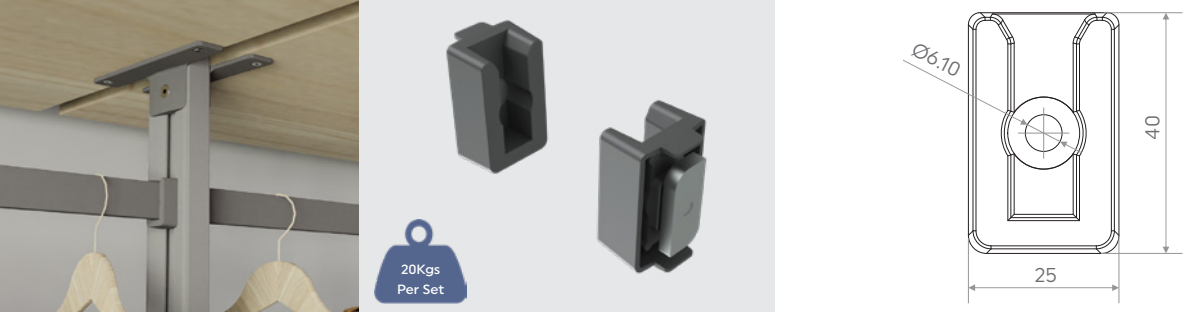
Concealed Slide Adaptor

CODE: PPDS - CSA

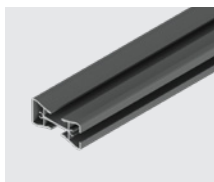


Rectangular Rail Support

CODE: PPDS - RRS



100



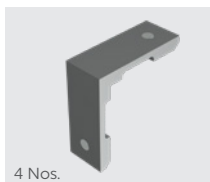
Aluminium Section



4 Nos.



4 Nos.



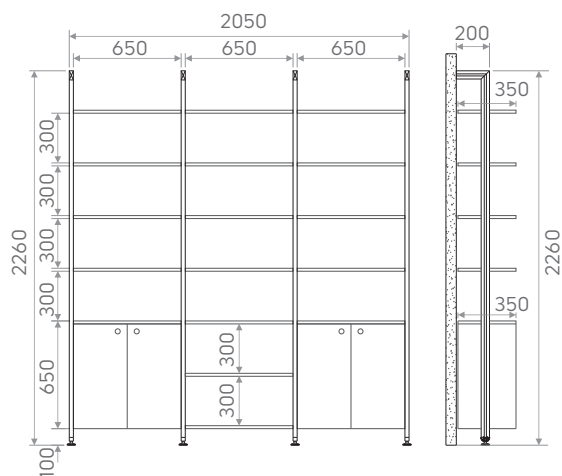
4 Nos.



4 Sets



15 Sets



LIVING ROOM APPLICATION



Aluminium Section



4 Nos.

Height Adjustable Plinth



4 Nos.

End Connector Set



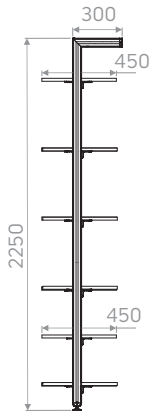
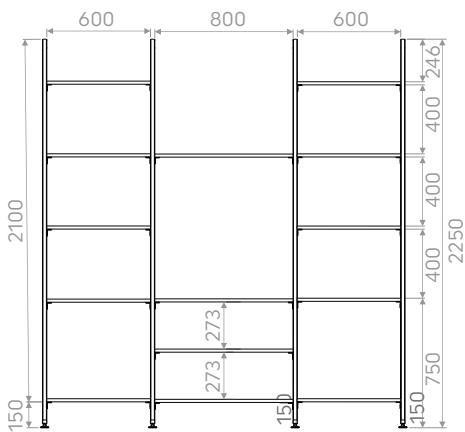
4 Nos.

Right Angle Connector



14 Sets

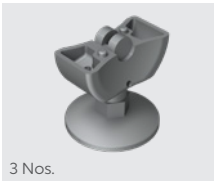
Big Shelf Support



LIVING ROOM APPLICATION



Aluminium Section



3 Nos.
Height Adjustable Plinth



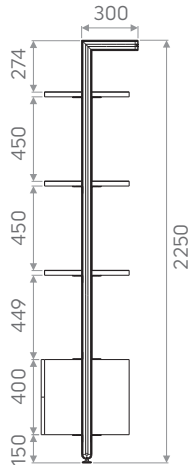
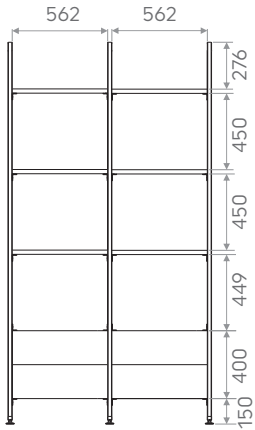
3 Nos.
End Connector Set



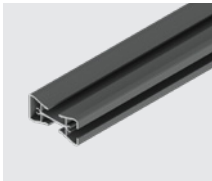
3 Nos.
Right Angle Connector



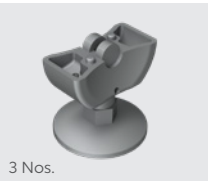
10 Sets
Big Shelf Support



STUDY / WORK FROM HOME APPLICATION



Aluminium Section



3 Nos.

Height Adjustable Plinth



3 Nos.

End Connector Set



3 Nos.

Right Angle Connector



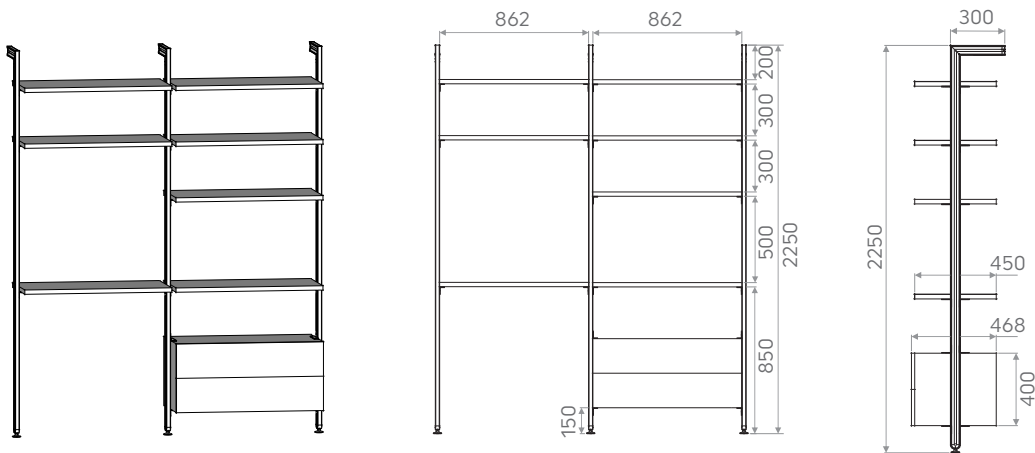
7 Sets

Big Shelf Support

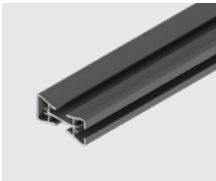


2 Sets

Small Shelf Support



STUDY / WORK FROM HOME APPLICATION



Aluminium Section



6 Nos.

Height Adjustable Plinth



6 Nos.

End Connector Set



6 Nos.

Right Angle Connector



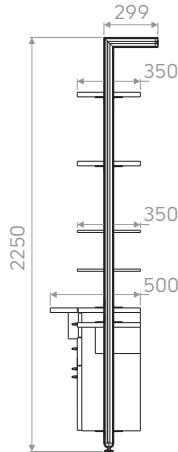
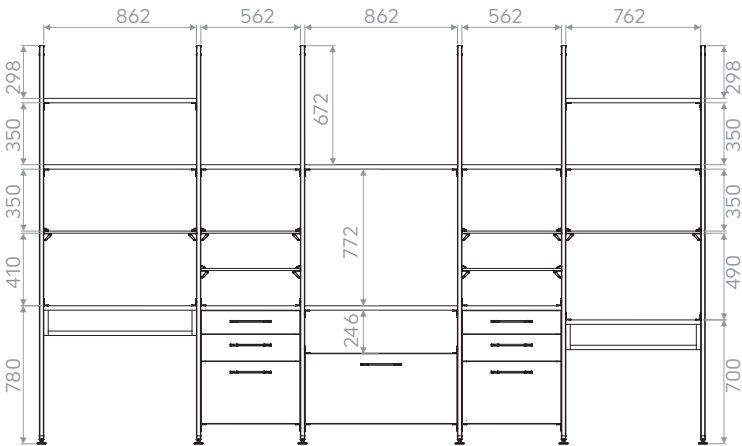
17 Sets

Big Shelf Support



6 Sets

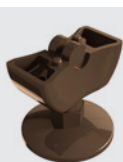
Adjustable Glass Shelf Support



WALK-IN WARDROBE APPLICATION



Aluminium Section



10 Nos.
Height /
Plinth



10 Nos.



10 Nos.
Right Angle
Connector



Big Shelf Support



Adjustable Glass Shelf Support



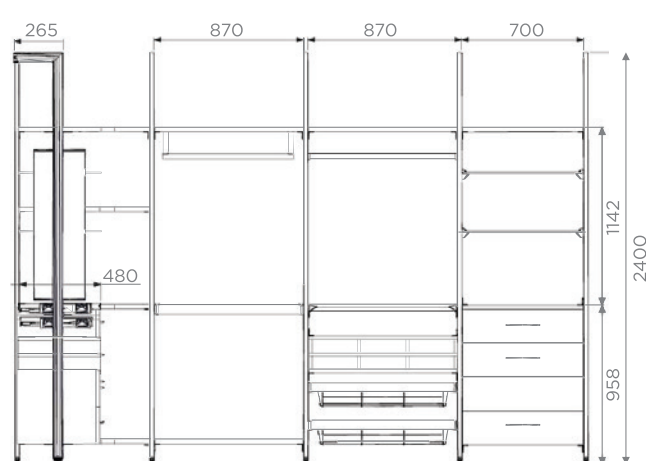
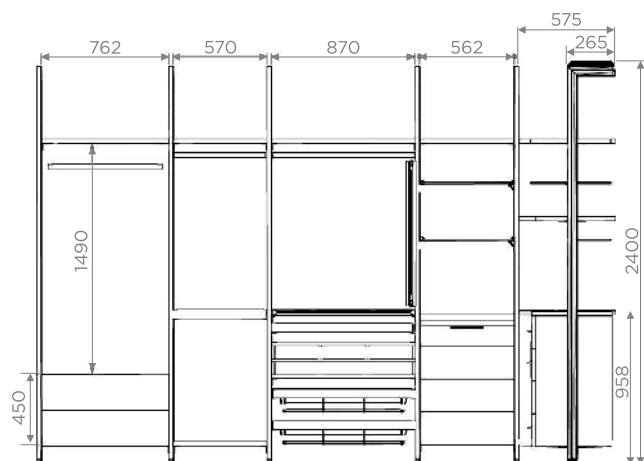
7 Sets

Concealed Slide
Adaptors

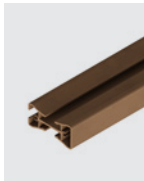


3 Sets

Rectangular Rail Support



BEDROOM APPLICATION



Aluminium
Section



6 Nos.
Height
Adjustable
Plinth



6 Nos.
End Connector
Set



6 Nos.
Right Angle
Connector



11 Sets
Big Shelf
Support



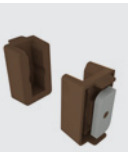
2 Sets
Tilting Shelf
Bracket



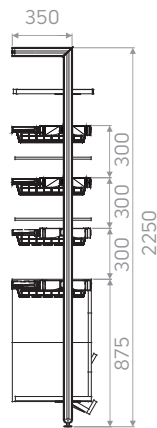
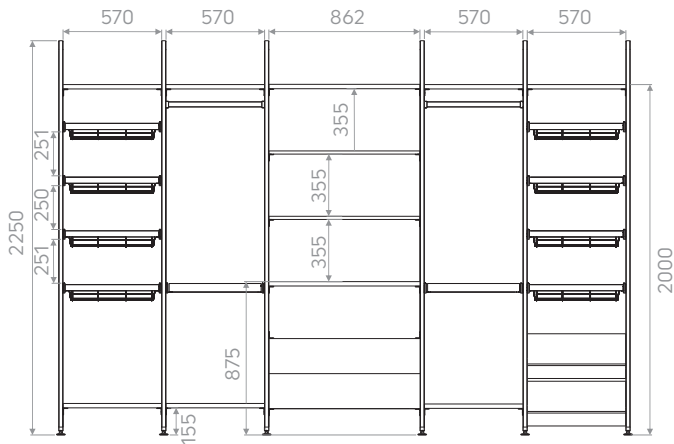
2 Sets
Adjustable Glass
Shelf Support



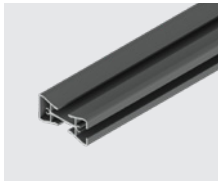
8 Sets
Concealed Slide
Adaptors



2 Sets
Rectangular Rail
Support



BATHROOM APPLICATION



Aluminium Section



2 Nos.

Height Adjustable Plinth



2 Nos.

End Connector Set



2 Nos.

Right Angle Connector



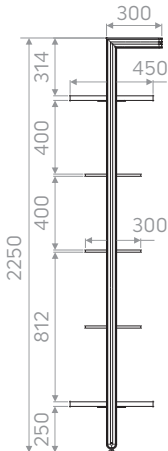
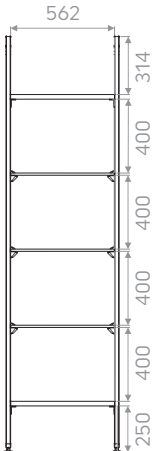
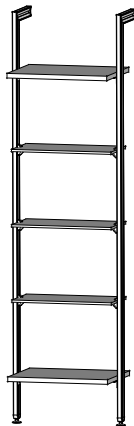
2 Sets

Big Shelf Support

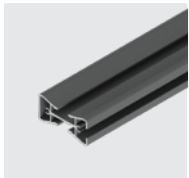


3 Sets

Adjustable Glass Shelf Support



BATHROOM APPLICATION



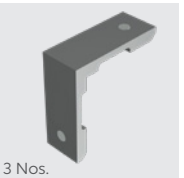
Aluminium Section



3 Nos.
Height Adjustable
Plinth



3 Nos.
End Connector Set



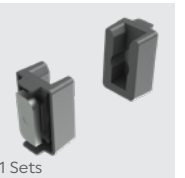
3 Nos.
Right Angle
Connector



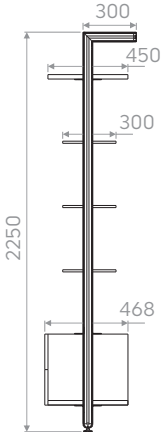
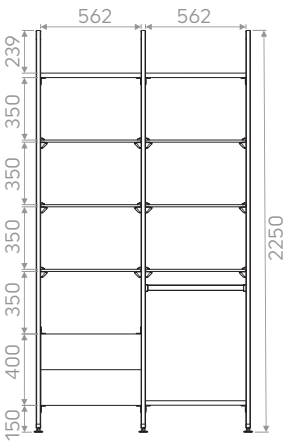
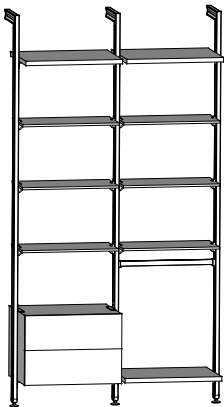
5 Sets
Big Shelf Support



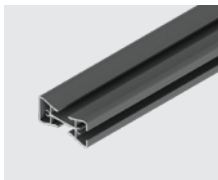
6 Sets
Adjustable Glass
Shelf Support



1 Sets
Rectangular Rail
Bracket



RETAIL APPLICATION



Aluminium Section



4 Nos.

Height Adjustable Plinth



4 Nos.

End Connector Set



4 Nos.

Right Angle Connector



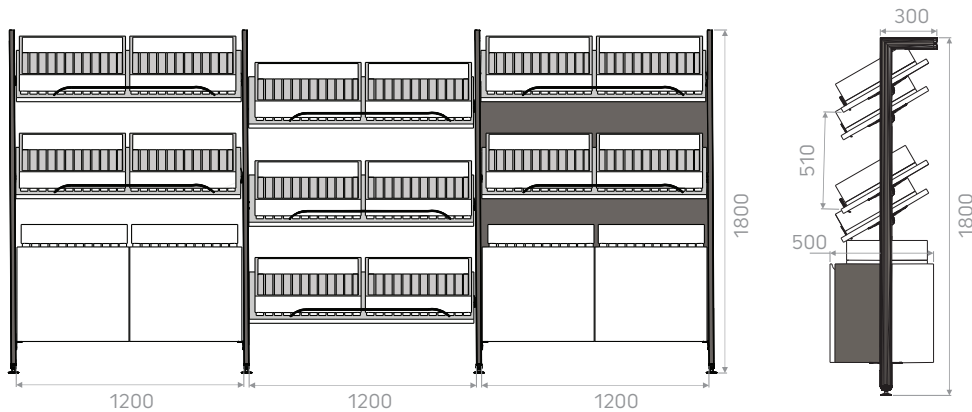
4 Sets

Big Shelf Support



7 Sets

Tilting Shelf Bracket

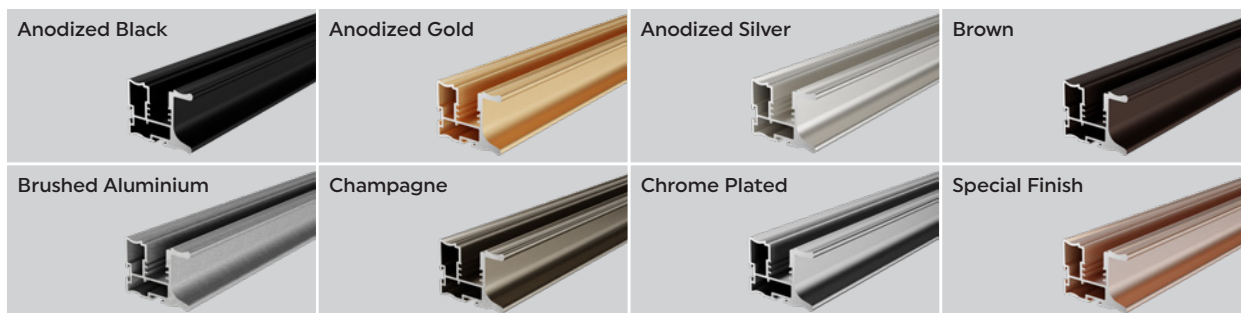




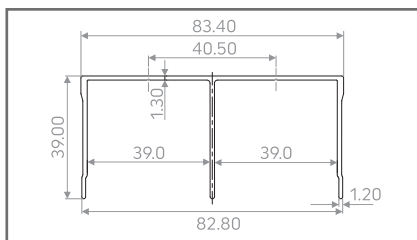
HI SLIDE WALK-IN SLIDING SYSTEM

Get a walk-in wardrobe with Ebco's Pole Shelving System! Light yet strong, these systems have a unique design and functionality, allowing you to create additional space and storage, with easy and quick installation. With a choice of open and closed fittings and units, you can custom fit your bedroom with the perfect wardrobe!

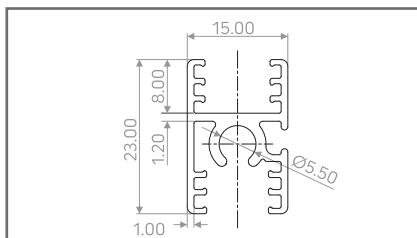
AVAILABLE FINISHES



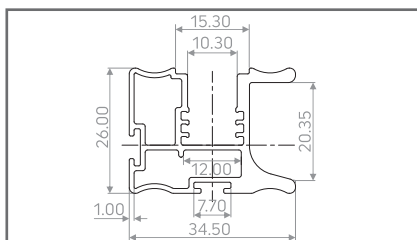
HI SLIDE WALK-IN SLIDING SYSTEM PROFILES



CODE: HSWSS-TGT-3M
FINISH: AS/AB/AG/SF/CP/BA/CH
LENGTH: 3mtr

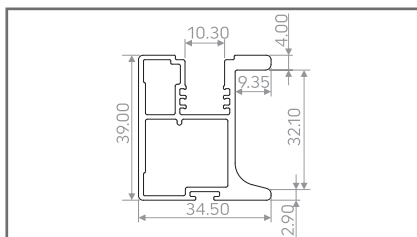


CODE: HSWSS-SPTM-3M
FINISH: AS/AB/AG/SF/CP/BA/CH
LENGTH: 3mtr



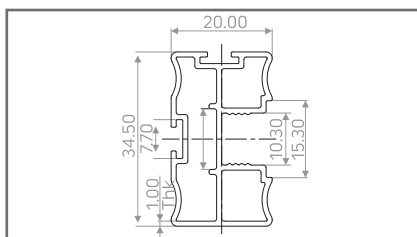
CODE: HSWSS-SPVH-3M
FINISH: AS/BL/SF/CP/BA/CH
LENGTH: 3mtr

CODE: HSWSS-SPVH-36
FINISH: AS/BL/SF/CP/BA
LENGTH: 3.66mtr



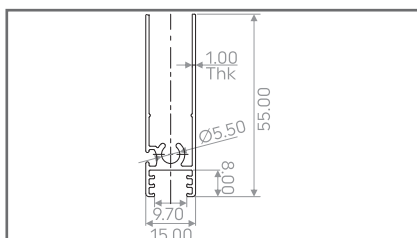
CODE: HSWSS-SPVHHD-3M
FINISH: AS/BL
LENGTH: 3mtr

CODE: HSWSS-SPVHHD-36
FINISH: AS/BL
LENGTH: 3.66mtr

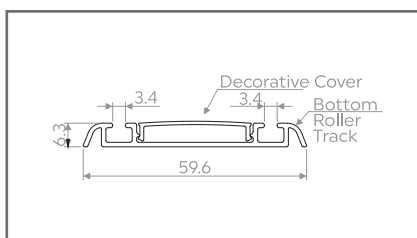


CODE: HSWSS-SPV-3M
FINISH: AS/BL/SF/CP/BA/CH
LENGTH: 3mtr

CODE: HSWSS-SPV-36
FINISH: AS/BL/SF/CP/BA/CH
LENGTH: 3.66mtr



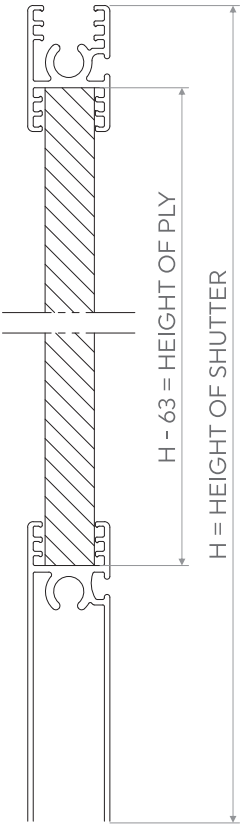
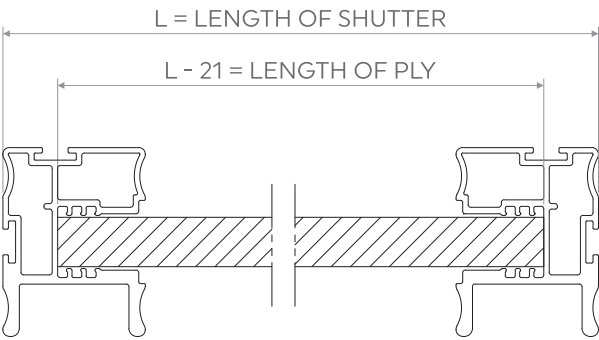
CODE: HSWSS-PB-3M/36
FINISH: AS/AB/AG/SF/CP/BA/CH
LENGTH: 3mtr/3.66mtr



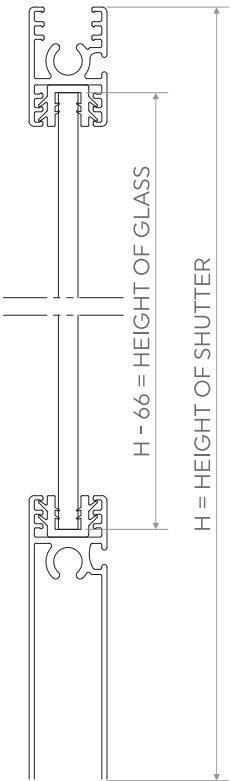
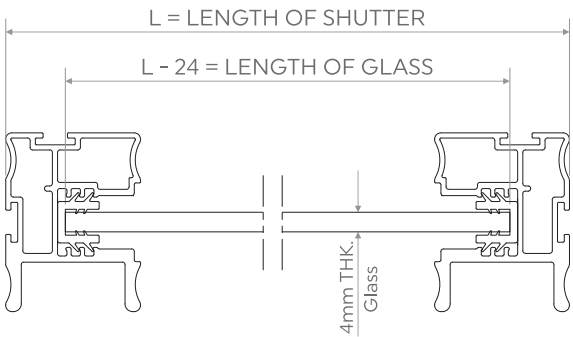
CODE: HSWSS-BTC-3M
FINISH: AS/AB/AG/SF/CP/BA/CH
LENGTH: 3mtr

HI SLIDE WALK-IN SLIDING SYSTEM

Wooden Door Application - HSWSS Shutter Size Calculation



Glass Door Application - HSWSS Shutter Size Calculation

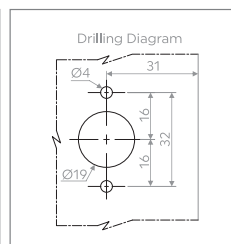
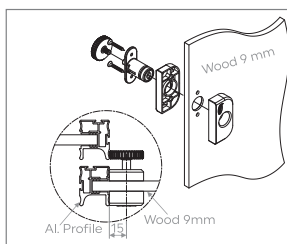
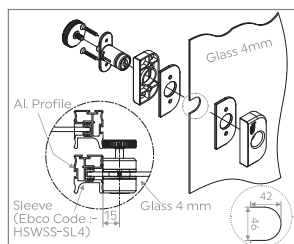


WALK-IN SLIDING LOCKS

Walk-in Sliding Push Lock — Glass / Wood



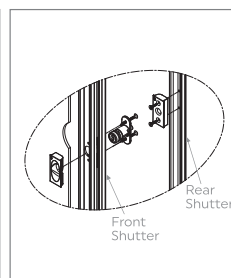
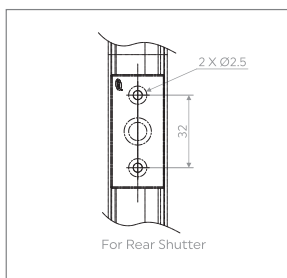
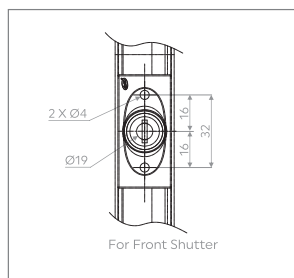
- Specially designed lock for the Walk-in Sliding wood and glass Shutters
- Glass THK.: 4mm & Wood THK.: 9mm
- Compatible to use with shutter profile vertical handle (HSWSS-SPVH)
- Code: P-WSPL-GW
- Finish: Black



Walk-in Sliding Push Lock – Aluminum



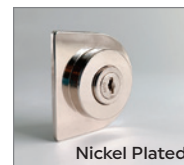
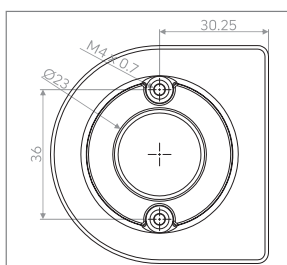
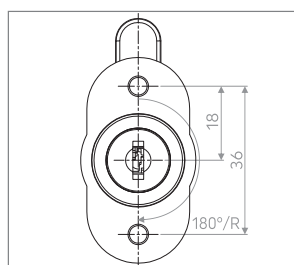
- Specially designed lock for the Walk-in Sliding Shutters profile vertical handle (HSWSS-SPVH)
- Code: P-WSPL-AL
- Finish: Black



Walk-in Sliding Lock



- Specially designed lock for the Walk-in Sliding Shutters
- Compatible with below Profiles:
 - 1) P-WSL1 model to use with HSWSS-SPVH Profile
 - 2) P-WSL2 model to use with HSWSS-SPVH-HD Profile
- Code: P-WSL1/2





WARDROBE ACCESSORIES

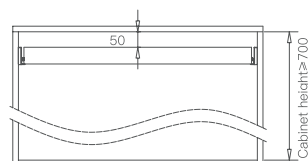
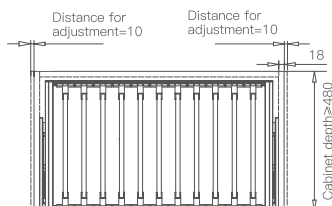
Ebco's wide range of wardrobe pullout accessories give clear overview of every item stored in your wardrobes. Dresses, Shoes, Trousers, Jewellery or any other accessories - choose the right solution to store all your favourite items carefully and in a stylish way.

WARDROBE ACCESSORIES

Wardrobe Pullout - Trouser / Saree (Soft Close)



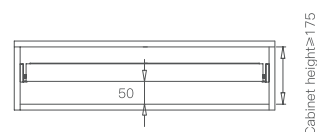
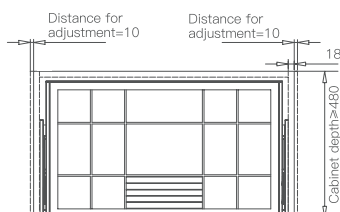
CODE: WPTS-45/60/80/90-SC-BR
FINISH: BROWN



Wardrobe Pullout Drawer Organiser (Soft Close)



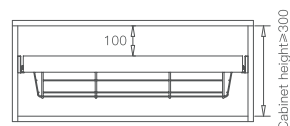
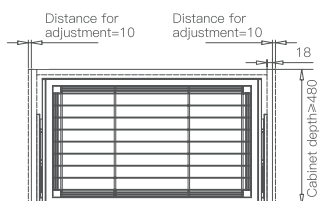
CODE: WPDO-45/60/90-SC-BR
FINISH: BROWN



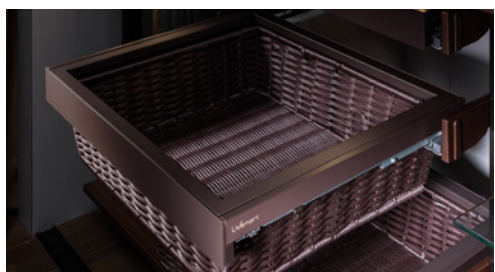
Wardrobe Pullout Basket (Soft Close)



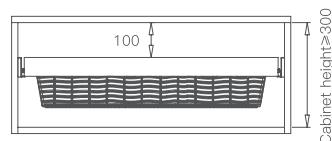
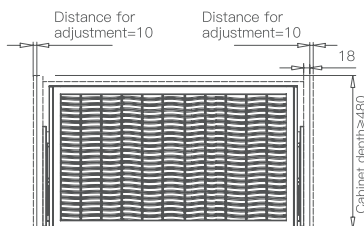
CODE: WPB-45/60/90-SC-BR
FINISH: BROWN



Wardrobe Pullout Basket - Wicker (Soft Close)



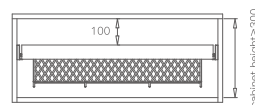
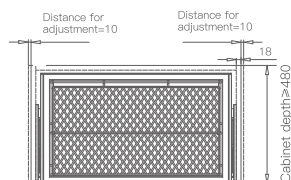
CODE: WPBW-45/60/90 SC BR
FINISH: BROWN



Wardrobe Pullout Shoe Rack - Soft Close



CODE: WPSR-60/90-SC-BR
FINISH: BROWN

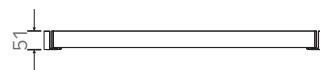
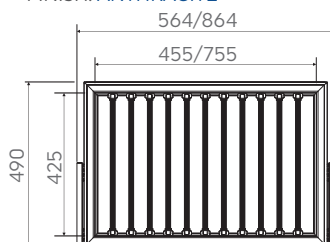


WARDROBE ACCESSORIES

Wardrobe Pullout 2 - Trouser / Saree (Soft Close)



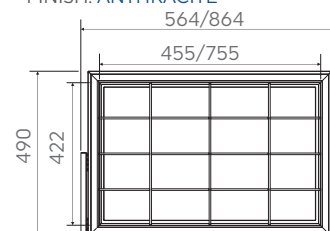
CODE: WP2TS-60/90-SC-AT
FINISH: ANTHRACITE



Wardrobe Pullout 2 Drawer Organiser (Soft Close)



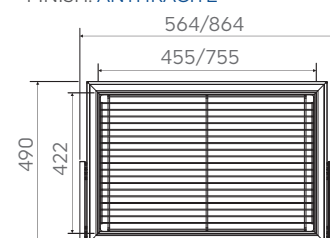
CODE: WP2DO-60/90-SC-AT
FINISH: ANTHRACITE



Wardrobe Pullout 2 Basket (Soft Close)



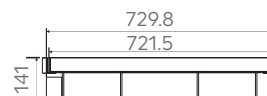
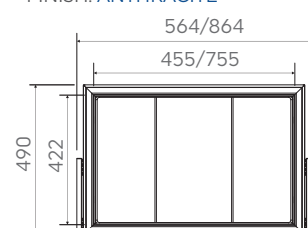
CODE: WP2B-60/90-SC-AT
FINISH: ANTHRACITE



Wardrobe Pullout 2 Basket - Wicker (Soft Close)



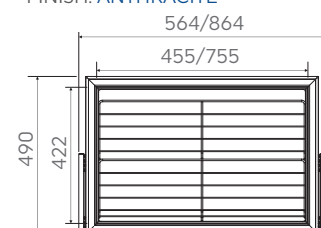
CODE: WP2BW-60/90 SC AT
FINISH: ANTHRACITE



Wardrobe Pullout 2 Shoe Rack - Soft Close

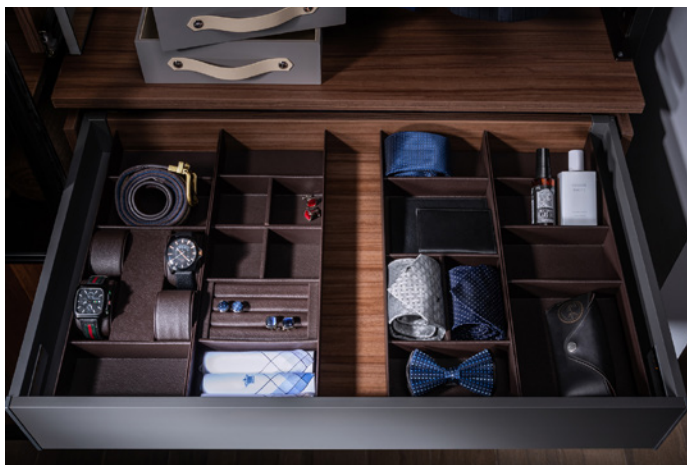


CODE: WP2SR-60/90-SC-AT
FINISH: ANTHRACITE



WARDROBE ACCESSORIES

Wardrobe Drawer Organiser 2

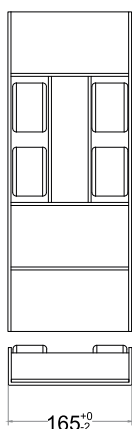


FEATURES:

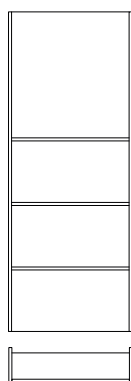
- Rearrange your valuables as desired with these multipurpose divider organisers.
- Can be easily added to a finished wardrobe and moved around to suit your needs.
- Ideal for storing multiple items such as jewellery, watches, bangles or other accessories.
- Dimension : Length (425mm), Width (165mm), Height (50mm)
- Finish : Brown



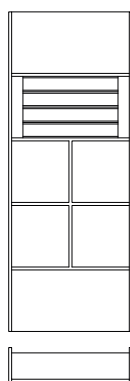
WDO2-WB1



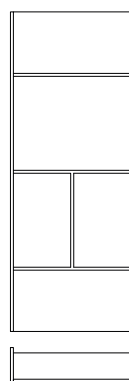
WDO2-M41



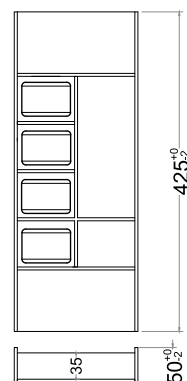
WDO2-OR



WDO2-M42



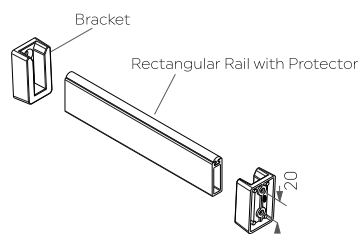
WDO2-WB2



SR.NO	ITEM	CODE	SIZE (mm)	FINISH
1	Wardrobe Drawer Organiser 2 - Watch / Bangles 1	WDO2-WB1	425 X 165 X 50	Brown
	Wardrobe Drawer Organiser 2 - Watch / Bangles 2	WDO2-WB2		
	Wardrobe Drawer Organiser 2 - Multipurpose-4-1	WDO2-M41		
	Wardrobe Drawer Organiser 2 - Multipurpose-4-2	WDO2-M42		
	Wardrobe Drawer Organiser 2 - Ornaments & Rings	WDO2-OR		

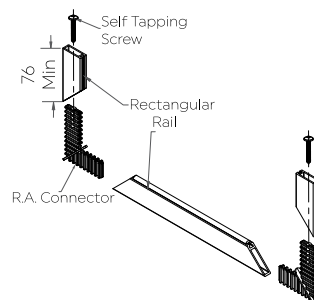
WARDROBE ACCESSORIES

Wardrobe Rail Fittings - Rectangular Rail & Bracket



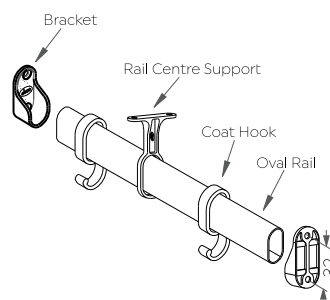
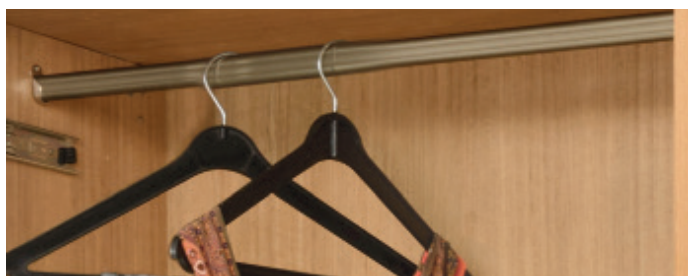
ITEM	CODE	SIZE (mm)	FINISH
Wardrobe Rail Fitting - Rectangular Rail	WRF-RR-2-AN	10 X 30	Anodised Brown
	WRF-RR-3-AN	10 X 30	
	WRF-RR-3M-AN	10 X 30	
	WRF-RR-2-BA	10 X 30	Brushed Aluminium
	WRF-RR-3M-BA	10 X 30	
	WRF-RR-3-BA	10 X 30	
Wardrobe Rail Fitting Rectangular Bracket	WRF-BR1	42 X 25 X Ø 4	Brown / Anodized

L Connector for Rectangular Al. Rail



ITEM	CODE	SIZE (mm)	FINISH
L Connector for Rectangular Al. Rail	WRF - RRC	-	Brown

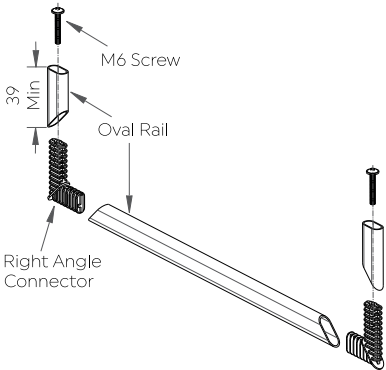
Wardrobe Rail Fittings - Oval



ITEM	CODE	SIZE (mm)	FINISH
Wardrobe Rail Fittings - Oval	WRF RA-1-AC / CP	-	Anodised Champagne / Chrome Plated
	WRF RA-2-AC / CP	-	
	WRF RA-3-AC / CP	-	
Bracket	WRF-B1	-	Nickel Plated
Bracket - MS	WRF-B2	-	
Rail Centre Support	WRF-RS1	-	Nickel Plated
Coat Hook	WRF - CH	-	Black/Grey

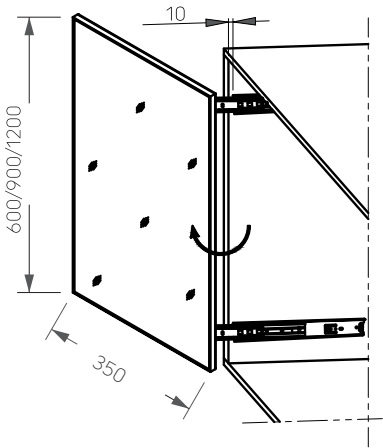
WARDROBE ACCESSORIES

Wardrobe Rail R.A Connector



ITEM	CODE	SIZE (mm)	FINISH
Wardrobe Rail R.A. Connector	WRF-RAC	-	Brown

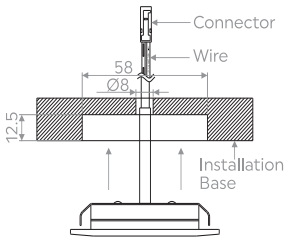
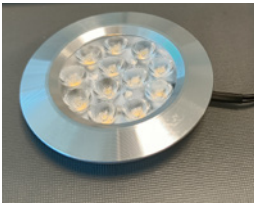
Mirror Pullout (Frameless)



ITEM	CODE	SIZE (mm)	FINISH
Mirror Pullout (Frameless)	WA-POM60-N	600 X 350	Anodised Silver / Black
	WA-POM90-N	900 X 350	
	WA-POM120-N	1200 X 350	

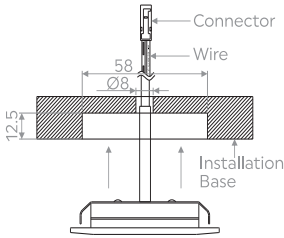
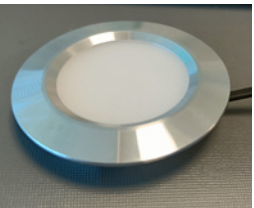
FURNITURE LIGHTS LED - 24V

Spot Bright Regular (Recessed Mount)



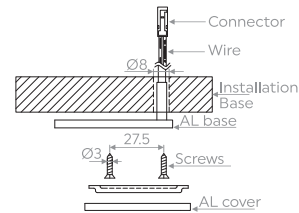
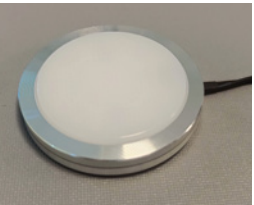
ITEM	CODE	POWER	FINISH
Spot Bright Regular	S-BRRR-NW	24V/2.4W	Anodised Silver/Black

Spot Bright Diffused (Recessed Mount)



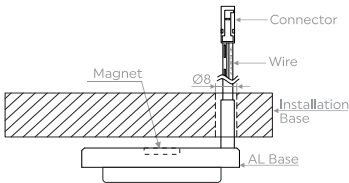
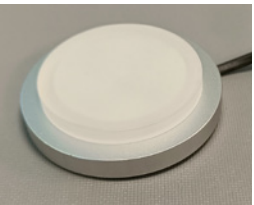
ITEM	CODE	POWER	FINISH
Spot Bright Diffused	S-BRDR-NW	24V/2.4W	Anodised Silver/Black

Spot Diffused (Surface Mount)



ITEM	CODE	POWER	FINISH
Spot Diffused	S-SDS-NW	24V/2.4W	Anodised Silver

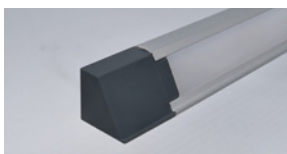
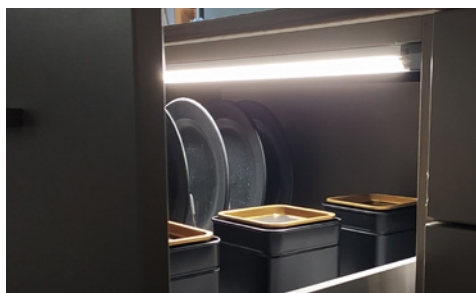
Spot Diffused-2 (Magnetic-Surface Mount)



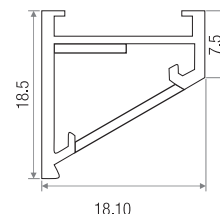
ITEM	CODE	POWER	FINISH
Spot Diffused-2	S-SD2SM-NW	24V/2.16W	Anodised Silver

FURNITURE LIGHTS LED - 24V

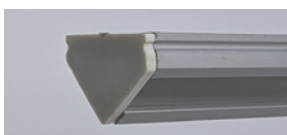
Linear Slim 5 for Drawer-Door Trigger IR Sensor (Surface/ Side Mount)



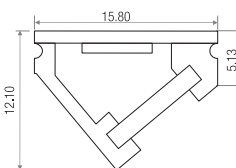
ITEM	CODE	LENGTH	POWER	FINISH
Linear Slim 5 for Drawer-Door Trigger IR Sensor (Surface/ Side Mount)	L-LS5IRS-412-NW	412mm	24V/6W	Anodised Silver
	L-LS5IRS-562-NW	562mm	24V/8W	
	L-LS5IRS-862-NW	862mm	24V/12W	



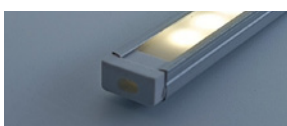
Linear Slim 6 for cabinets (Surface Mount)



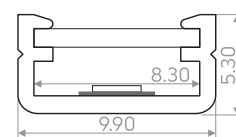
ITEM	CODE	LENGTH	POWER	FINISH
Linear Slim 6 for cabinets (Surface Mount)	L-LS6S-412-NW	412mm	24V/5W	Anodised Silver/ Brown
	L-LS6S-562-NW	562mm	24V/6W	
	L-LS6S-762-NW	762mm	24V/9W	
	L-LS6S-862-NW	862mm	24V/10W	
	L-LS6S-962-NW	962mm	24V/11W	
	L-LS6S-1162-NW	1162mm	24V/13W	



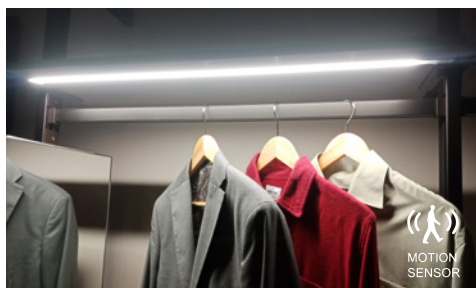
Linear Slim 7



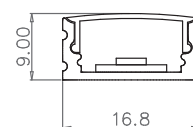
ITEM	CODE	LENGTH	POWER	FINISH
Linear Recess 7	L-LS7-462-NW	412mm	24V/5W	Anodised Silver
	L-LS7-562-NW	562mm	24V/6W	
	L-LS7-862-NW	862mm	24V/10W	
	L-LS7-2000-NW	2000mm	24V/18W	



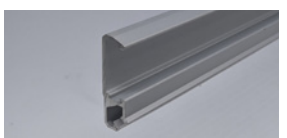
Linear Recessed Slim 8 mm with PIR sensor



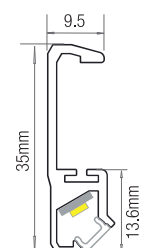
ITEM	CODE	LENGTH	POWER	FINISH
Linear Recessed Slim 8mm with PIR sensor	L-LRS8-412	412mm	24V/6W	Anodised Silver
	L-LRS8-562	562mm	24V/8W	
	L-LRS8-862	862mm	24V/12W	



Linear Shelf Edge (Edge Mount)

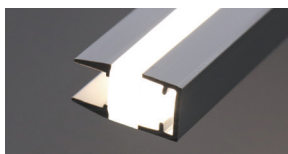
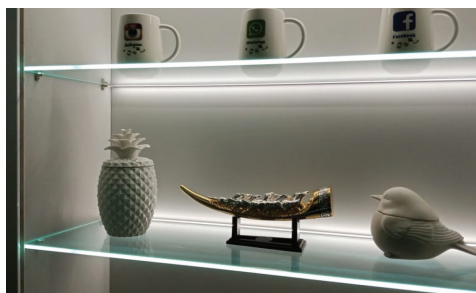


ITEM	CODE	LENGTH	POWER	FINISH
Linear Shelf Edge (Edge Mount)	L-LSE18-412-NW	412mm	24V/5W	Anodised Silver
	L-LSE18-562-NW	562mm	24V/6W	
	L-LSE18-862-NW	862mm	24V/10W	

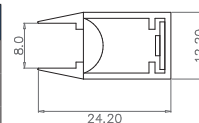


FURNITURE LIGHTS LED - 24V

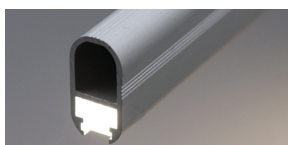
Linear 2 way Glass 8 mm with Door Trigger 2 part sensor



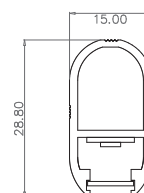
ITEM	CODE	LENGTH	POWER	FINISH
Linear 2 Way Glass 8mm with Door Trigger 2 Part Sensor	L-L2G8-412	412mm	24V/6W	Anodised Silver
	L-L2G8-562	562mm	24V/8W	
	L-L2G8-862	862mm	24V/12W	



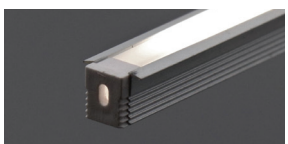
Linear Wardrobe Oval with Door Trigger 2 part sensor



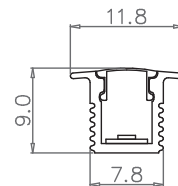
ITEM	CODE	LENGTH	POWER	FINISH
Linear Wardrobe Oval With Door Trigger 2 part sensor	L-LWO-412	409mm	24V/6W	Anodised Silver
	L-LWO-562	559mm	24V/8W	
	L-LWO-862	859mm	24V/12W	



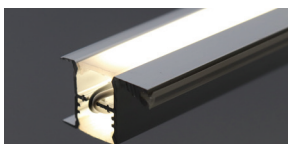
Linear Recess 9mm



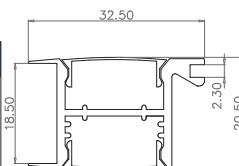
ITEM	CODE	LENGTH	POWER	FINISH
Linear Recess 9mm	L-LR9-412	409mm	24V/4.8W	Anodised Silver
	L-LR9-562	559mm	24V/6.5W	
	L-LR9-862	859mm	24V/10W	



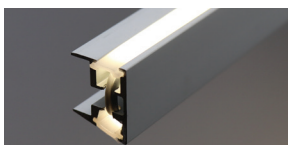
Linear 2 Way 18mm - H with Hand Shake Sensor (Cabinet Shelf Edge Handle)



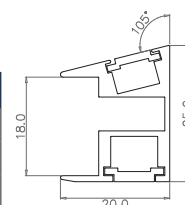
ITEM	CODE	LENGTH	POWER	FINISH
Linear Two Way 18mm - H With Hand Shake Sensor	L-L218H-412	412mm	24V/6W	Anodised Silver
	L-L218H-562	562mm	24V/8W	
	L-L218H-862	862mm	24V/12W	
Linear Two Way 18mm Profile	L-L218-AS	2050mm	-	



Linear 2 Way Angular 18mm (For Cabinet Shelf Edge)

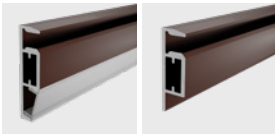


ITEM	CODE	LENGTH	POWER	FINISH
Linear 2 Way Angular 18mm	L-L218A-412	412mm	24V/6W	Brown
	L-L218A-562	562mm	24V/8W	
	L-L218A-862	862mm	24V/12W	

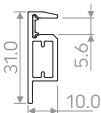
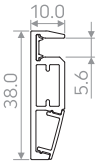


FURNITURE LIGHTS LED - 24V

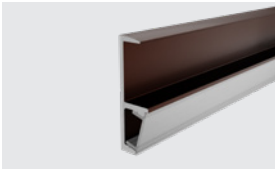
Cabinet Glass Shelf LED Profile



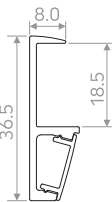
ITEM	CODE	LENGTH	FINISH
Cabinet Glass Shelf LED Profile	CGSL-4-AN	3mtr	Brown
	CGSS-4-AN	3mtr	
Mounting Kit	CGSL2K	-	Zinc White



Linear Wood Shelf Edge LED Profile



ITEM	CODE	LENGTH	FINISH
Linear Wood Shelf Edge LED Profile	LWSEL-18-AN	3mtr	Brown



LED Strip Light - 8mm

Cool White
(CCT: 6500K)

Neutral White
(CCT: 4000K)

Warm White
(CCT: 3000K)

FEATURES:

- A versatile LED strip for decorative & cove lighting applications
- High colour consistency ensures good light quality
- Available in Cool White, Neutral White & Warm White
- Power: 24V, 11W/mtr
- CCT: 4000K
- Super bright, double copper PCBS
- 120 LED per meter
- Suits any type of décor - interior & exterior

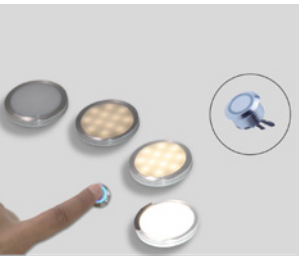
Door Trigger Sensor



Door Trigger Sensor



Touch Dimmer Sensor



3/6/10 Way Distributor



Extension Cord for Light Series 2 (24V)



Power Supply Unit





EBCO Pvt. Ltd.
402 - 405 / 502, Hyde Park,
Saki Vihar Road,
Mumbai - 400072, INDIA.
Tel : +91-22 67837777.
Fax : +91-22 66920700.
Email : info@ebco.in



Click here for
Distribution
Network

