

- OFFICE FURNITURE FITTINGS

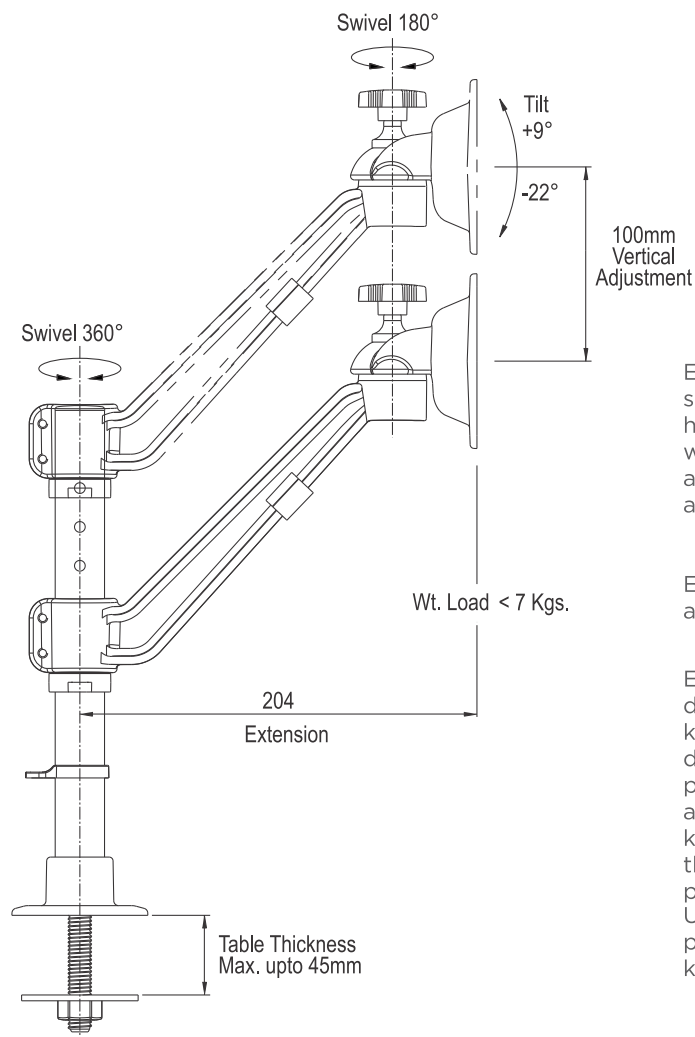
EC_B | July 2019





OFFICE FURNITURE FITTINGS

| | | | |
|-----|--|-------|--|
| 5-6 | Computer Monitor Arm - Single Screen | 31 | Side Mounting CPU Stand |
| 7 | Computer Monitor Arm - Single Screen Extension Arm | 31 | Side Mounting CPU Stand Slim |
| 8 | CMA Laptop Plate | 32 | Safe Drawer - Single |
| 9 | Computer Monitor Arm - Double Screen | 33 | Safe Drawer - Double |
| 10 | Computer Monitor Arm - Double Screen Extension Arm | 34 | Laptop Stand |
| 11 | Flat Screen Holder - Single Arm | 35-36 | Computer Wall Station |
| 12 | Flat Screen Holder Single Arm - Edge Mount | 37 | Electric Box - Slide Out |
| 13 | Flat Screen Holder - Single Arm Twin | 38 | Electric Box - Ceiling Mount |
| 14 | Flat Screen Holder - Double Arm | 39 | Electric Box - Edge Mount |
| 15 | Flat Screen Holder - Double Edge Mount | 40 | Electric Box - Flip Up |
| 16 | Flat Screen Holder - Quadruple Arm | 41 | Wireless Charger |
| 17 | Flat Screen Holder - Wall Mount | 41 | USB Charger with Cable Organiser (Ø60) |
| 18 | Flat Screen Holder Wall Mount - Extended Arm | 42 | USB Charger – Furniture Mount (Circular) |
| 19 | Articulated Keyboard Station | 43 | USB Charger – Furniture Mount (Linear) |
| 20 | Computer Keyboard Tray | 44 | Electric Box Slim |
| 21 | Keyboard Tray Full Extension - Soft Pad | 45 | Electric Box Slim - 2 & 3 |
| 22 | Computer Keyboard Tray - Jumbo | 46 | Work Station Tray (Round) |
| 23 | Computer Keyboard Tray Curve | 46 | Work Station Tray |
| 24 | Computer Keyboard Tray - Eco | 47 | Modesty Panel Clamp |
| 25 | Plastic Keyboard Base | 47 | Table Partition Clamp - Slim |
| 25 | Plastic Keyboard Base - with sliding Mouse Tray | 48 | Table Partition Clamp - Top Mount |
| 26 | CPU Station - Basic | 48 | Table Partition Clamp - Edge Mount |
| 27 | CPU Station | 49 | Vertebrae (Oval) |
| 28 | CPU Station with Lock | 49 | Vertebrae (Rectangular) |
| 29 | Telescopic CPU Stand | 50 | Cable Tray - Fixed |
| 29 | Telescopic CPU Stand - Slim | 50 | Cable Tray |
| 30 | CPU Stand / CPU Stand-Eco | 51 | Cable Organizer |
| | | 51 | Cable Manager Ø20 And Ø40 |
| | | 51 | Foot Rest |



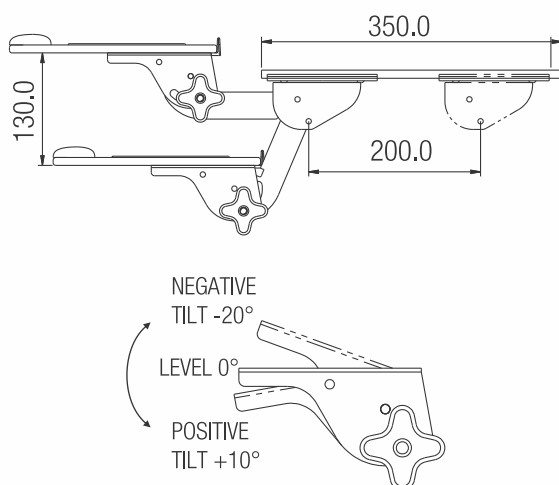
Ebco's range of Computer Furniture Fittings have been specially designed to reduce fatigue due to long working hours and the associated ill-effects such as neck, shoulder, wrist-related problems. Besides the benefits of aesthetic appeal, comfort to the user and clutter-free work spaces are an added advantage.

Ergonomic **Monitor Arms** have been designed for flexible adjustment of the height and viewing angle of the monitor.

Ergonomic **Keyboard Systems** attached underneath the desk, allows you to adjust the height and position of the keyboard to a comfortable position. It is specifically designed to adjust the height and angle of the keyboard to provide a comfortable posture to the user. Though design and a lot of prevailing information say you should tilt the keyboard to a positive angle, it is wrong. A negative angle that allows the wrists to stay in their natural position is proper. A positive angle is an injury waiting to happen. Use a negative tilt keyboard tray with an upper mouse platform or downward tiltable platform adjacent to keyboard.

Unique Ultra Sleek Design with negative tilt adjustment

Linear and Angular Adjustments



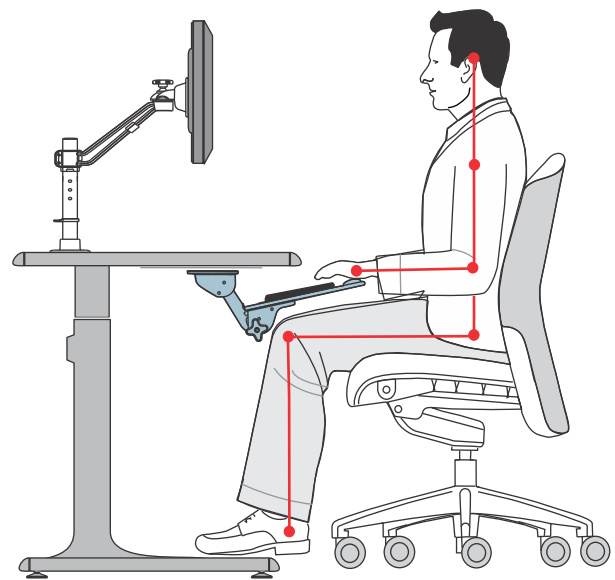
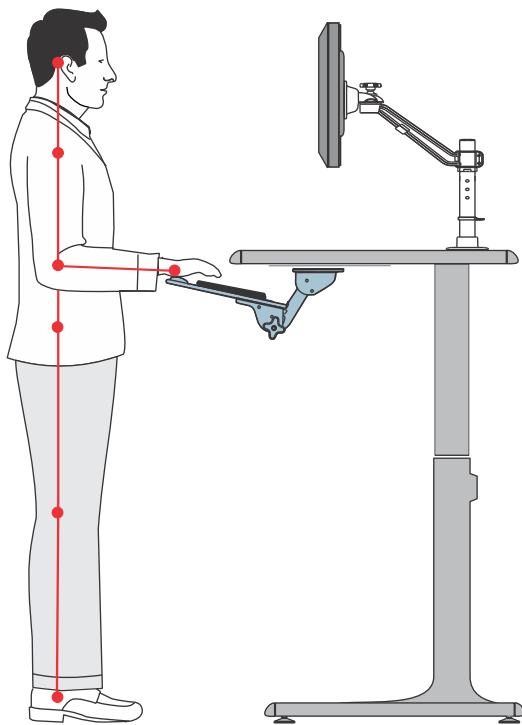
Computer Keyboard Stations has been specially designed to minimize the risk of modern day health hazard - Carpel Tunnel Syndrome (CTS) or Repetative Stress Injury (RSI). And by using correct monitor arms one can reduce the chance to have Spondylosis.



The top priority in choosing Office Furniture Fittings & Accessories should be physical comfort and ease of use. This is the reason why Ebco Office Furniture Fittings & Accessories have been designed to reduce fatigue while working long hours and keep the workspace clutter free. Style enhances visual appeal while the ergonomic design of the furniture and accessories reduces stress levels of the employees.

Ideal Body Posture at Work

Regardless of how good your working posture is, working in the same posture or sitting still for prolonged periods is not healthy. Research shows that changing position periodically or standing for regular intervals throughout the day can reduce fatigue and improve alertness and productivity.



Ideal Standing Position at Work

- The height of the worktop should be set according to your height in such a way that you work without reaching or bending.
- The forearms should be parallel to the floor.
- Try to ensure that head, neck and wrists are in relaxed position and not forced up or down to work.
- The monitor should be at least 16" to 18" (or more depending upon screen size) in distance from your eye.
- The keyboard should be adjusted to a comfortable height that it allows the user to type with upper arms relaxed from the shoulder and forearms parallel to the floor.

Ideal Sitting Position at Work

- The height of the worktop should be set according to your height in such a way that you work without reaching or bending.
- The forearms should be parallel to the floor.
- Try to ensure that head, neck and wrists are in relaxed position and not forced up or down to work.
- The monitor should be at least 16" to 18" (or more depending upon screen size) in distance from your eye.
- The top line of the screen should be at your eye level so that the middle of the screen is approximately 20° downward for relaxed viewing.
- Your sitting height should be in such a way that the thighs are parallel to the floor, fully supported on the chair & feet firm on the floor. Use a foot rest for better support.
- The keyboard should be adjusted to a comfortable height that allows the user to type with upper arm relaxed from the shoulder and fore arm parallel to the floor.



COMPUTER MONITOR ARM - SINGLE SCREEN



Special Features

- Robotic arm design enables flexibility for practical view.
- Concealed cable management system for clutter free work desk.
- Table top grommet mounting for 15" to 27" screen.
- Compatible for VESA 75 x 75 & VESA 100 x 100.
- Die cast for good Aesthetics.
- Max. Load : 8 Kgs. per arm.

Specifications

| Code No. | Finish |
|----------|-------------|
| CMA-SA | BL/SL/WT/AT |



ROTATIONAL SCREEN



HEIGHT ADJUSTMENT



ANGULAR ADJUSTMENT

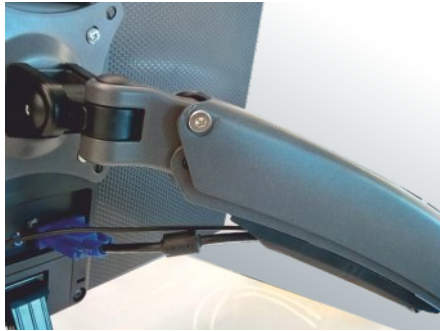




COMPUTER MONITOR ARM - SINGLE SCREEN



Cable Management



Pressure Adjustment

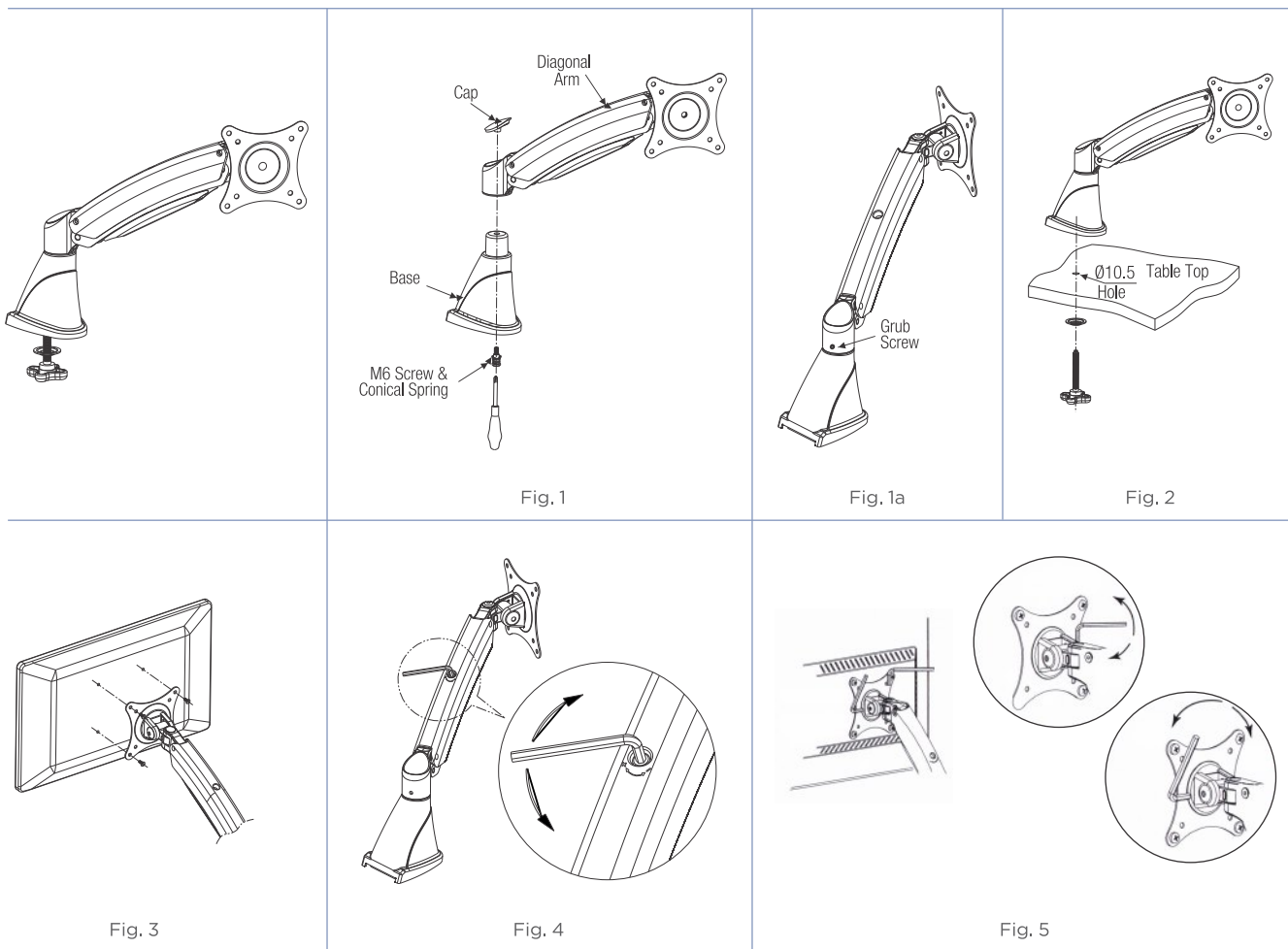
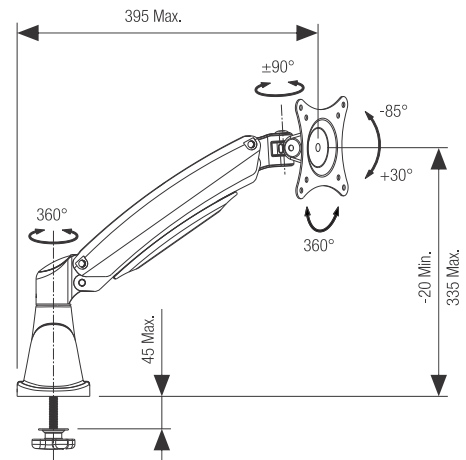


VESA 75 / 100



Fitting Instructions

1. Fix the Diagonal Arm onto the Base with Cap & M6 screw as shown in Fig.1.
2. Tighten the grub screw shown in Fig. 1a.
3. Drill Ø10.5mm hole throughout on table top on the desired position & Mount the Base as shown in Fig.2.
4. Screw the Flat Screen to the Mounting plate as shown in Fig.3.
5. Pressure can be adjusted by tightening & loosening the screw as shown in Fig.4.
6. Tighten the screws to adjust the load of the Monitor as shown in Fig.5.





COMPUTER MONITOR ARM - SINGLE SCREEN EXTENSION ARM



Special Features

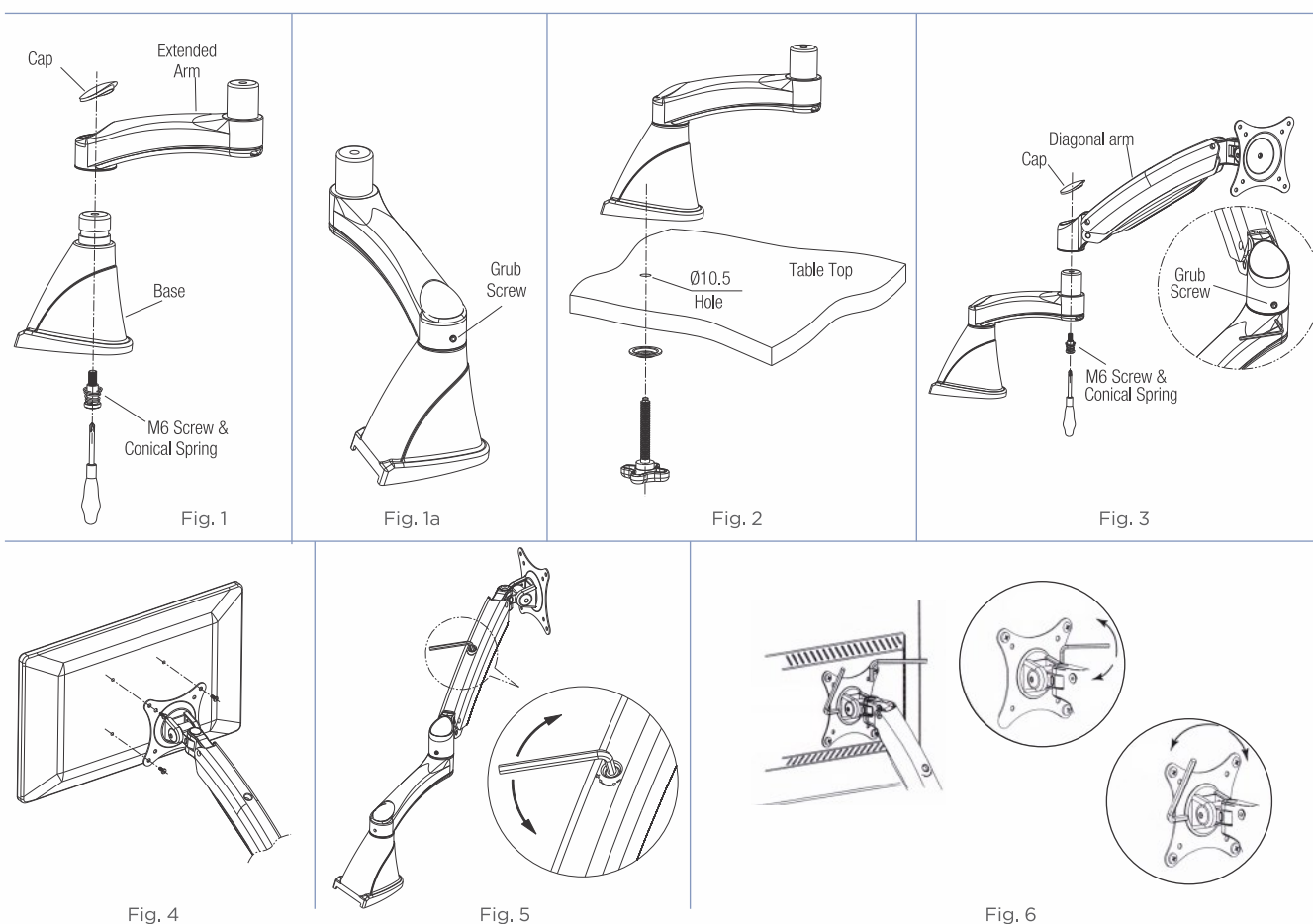
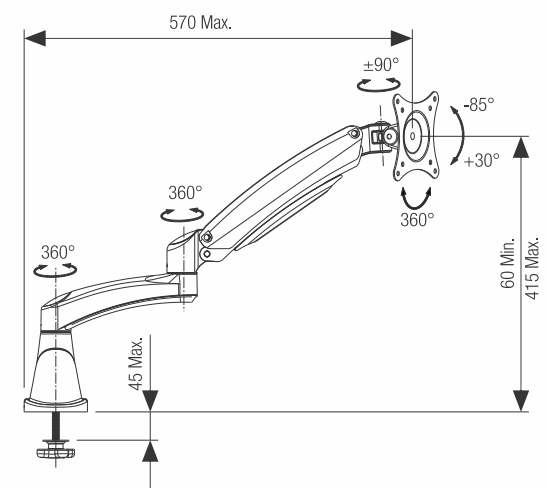
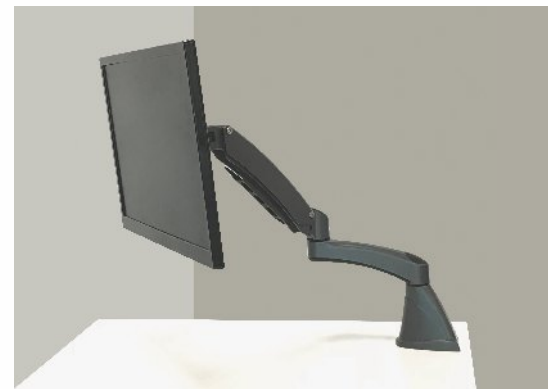
- Table Top Grommet mounting with Single Extension Arm.
- For 15" to 27" Screen.
- Ergonomically designed to comfort.
- Compatible for VESA 75 x 75 & VESA 100 x 100.
- Simultaneous adjustment.
- Die cast for good aesthetics.
- Functional design combined with elegant look.
- Stable & durable design.
- Max. Load : 8 Kgs. per arm.
- Also available in : Single Arm (CMA-SA), Double Arm (CMA-DA), Double Extension Arm (CMA-DEA).

Specifications

| Code No. | Finish |
|----------|-------------|
| CMA-EA | BL/SL/WT/AT |

Fitting Instructions

1. Fix the Extended Arm onto the Base with Cap & M6 screw as shown in Fig. 1.
2. Tighten the grub screw shown in Fig. 1a.
3. Drill Ø10.5mm hole throughout on table top on the desired position & Mount the Base as shown in Fig. 2.
4. Fix the Diagonal arm onto Extended Arm with Cap & M6 screw & then tighten the grub screw as shown in Fig. 3.
5. Screw the Flat Screen to the Mounting plate as shown in Fig. 4.
6. Pressure can be adjusted by tightening & loosening the screw as shown in Fig. 5.
7. Tighten the screws to adjust the load of the Monitor as shown in Fig. 6.





CMA LAPTOP PLATE



Special Features

- Unique design with laptop plate setup for integrating your laptop as a secondary display.
- This combine setup is ideal for mobile workers, business travelers users etc who are constantly on the go.
- Designed to use with 'ebco' Computer Monitor Arms.
- Max. Load : 8 kgs per arm.

Specifications

| Code No. | Finish |
|----------|-------------|
| CMA-LB | BL/SL/WT/AT |

Fitting Instructions

1. Screw the Laptop Base onto the computer monitor arm with screws & nuts provided as shown in Fig.1.

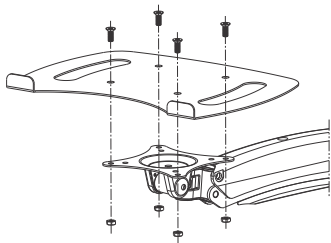
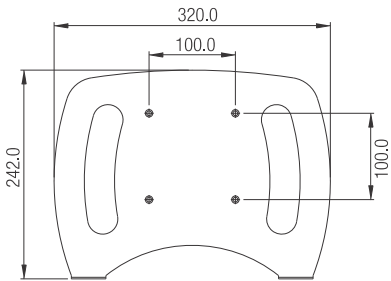


Fig. 1.



CMA Laptop Plate



COMPUTER MONITOR ARM - DOUBLE SCREEN



Special Features

- Table Top Grommet mounting with Double Arm.
- For 15" to 27" Screen.
- Ergonomically designed to comfort.
- Compatible for VESA 75 x 75 & VESA 100 x 100.
- Simultaneous adjustment.
- Die cast for good aesthetics.
- Functional design combined with elegant look.
- Stable & Durable design.
- Max. Load : 8 Kgs. per arm
- Also available in : Single Arm (CMA-SA), Single Extension Arm (CMA-EA), Double Extension Arm (CMA-DEA)

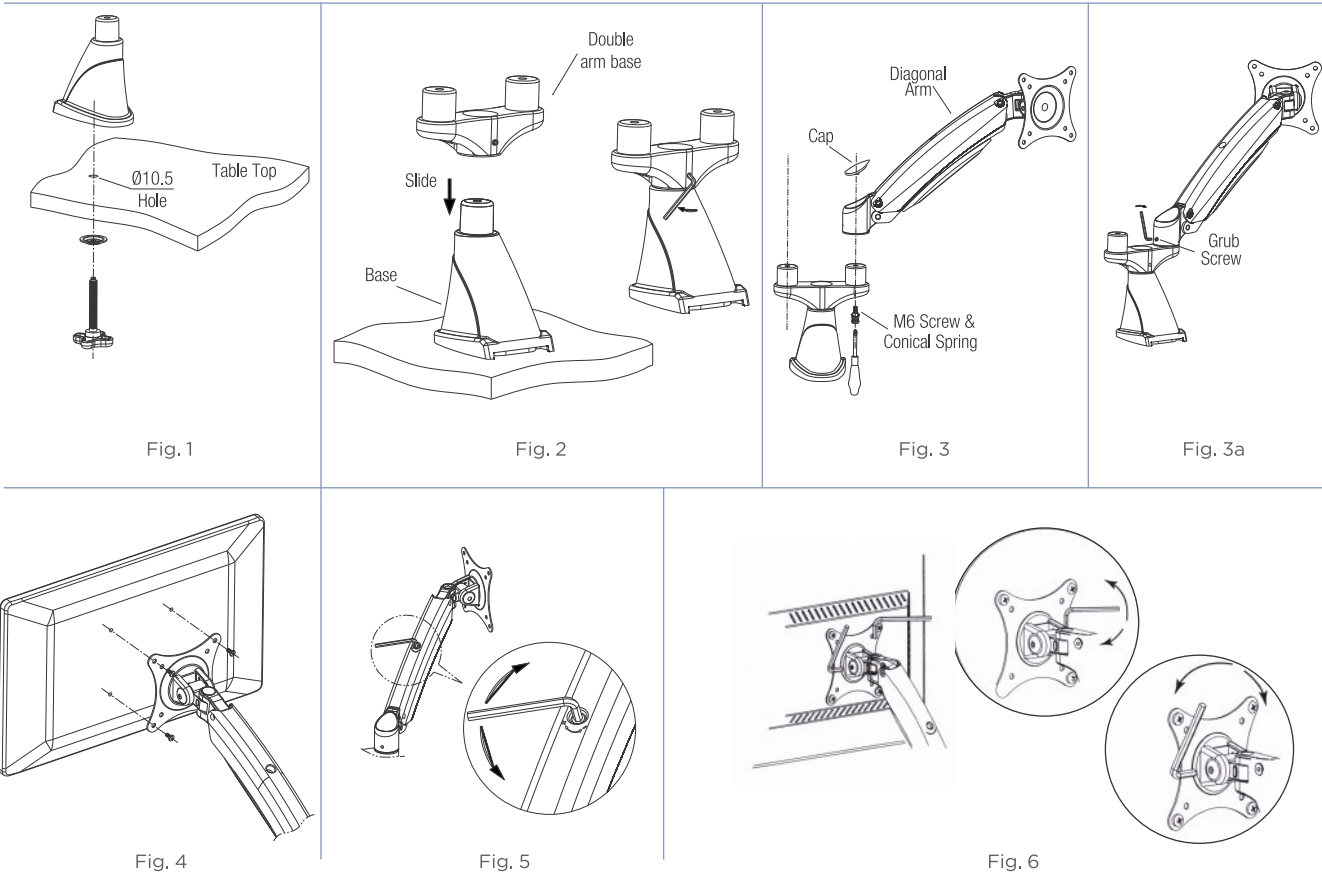
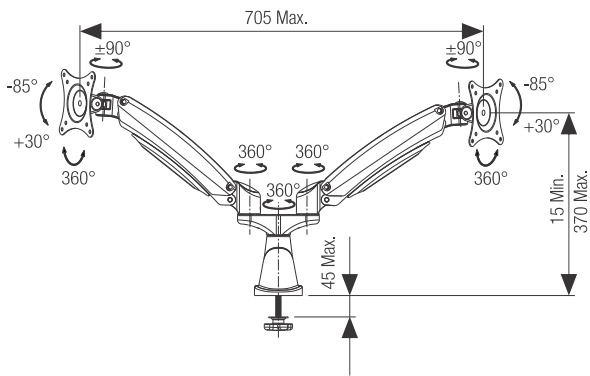


Specifications

| Code No. | Finish |
|----------|-------------|
| CMA-DA | BL/SL/WT/AT |

Fitting Instructions

1. Drill Ø10.5mm hole throughout on table top on the desired position & Mount the Base as shown in Fig.1.
2. Slide the double arm base onto the base & tighten the grub screw as shown in fig.2.
3. Fix the Diagonal arm onto double Arm base with Cap & M6 screw & shown in Fig. 3. tighten the grub screw as shown in Fig. 3a.
4. Screw the Flat Screen to the Mounting plate as shown in Fig. 4.
5. Pressure can be adjusted by tightening & loosening the screw as shown in Fig. 5.
6. Tighten the screws to adjust the load of the Monitor as shown in Fig. 6.





COMPUTER MONITOR ARM - DOUBLE SCREEN EXTENSION ARM



Special Features

- Table Top Grommet mounting with Double Extension Arm.
- For 15" to 27" Screen.
- Ergonomically designed to comfort.
- Compatible for VESA 75 x 75 & VESA 100 x 100.
- Simultaneous adjustment.
- Die cast for good aesthetics.
- Functional design combined with elegant look.
- Stable & Durable design.
- Max. Load : 8 Kgs. per arm
- Also available in : Single Arm (CMA-SA), Single Extension Arm (CMA-EA), Double Arm (CMA-DA).

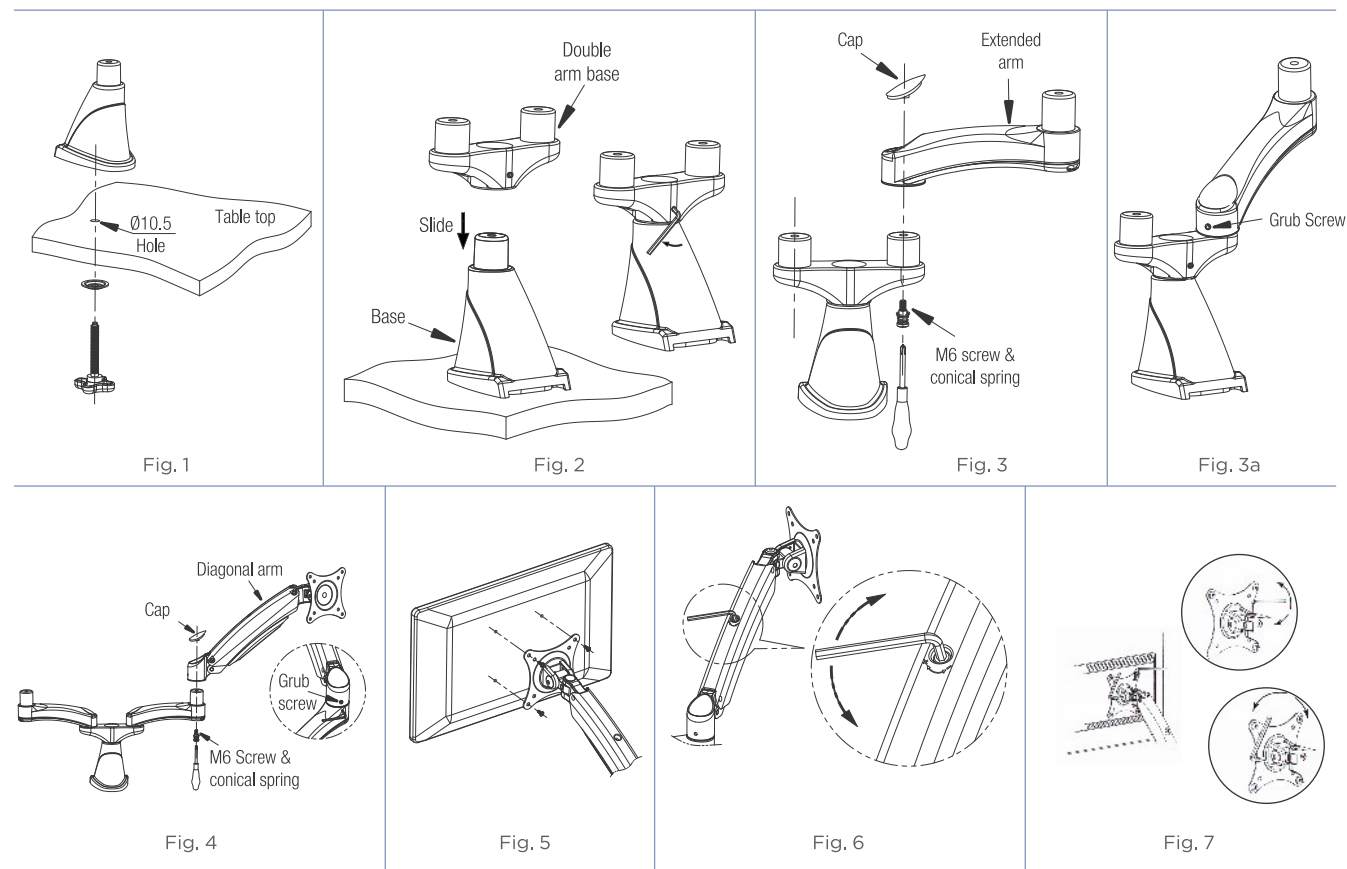
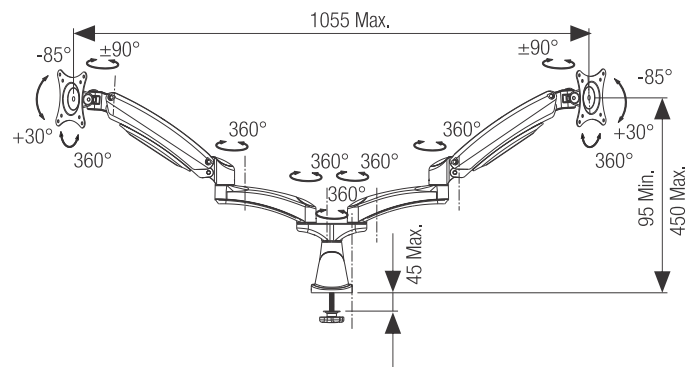


Specifications

| Code No. | Finish |
|----------|-------------|
| CMA-DEA | BL/SL/WT/AT |

Fitting Instructions

1. Drill $\varnothing 10.5\text{mm}$ hole throughout on table top on the desired position & Mount the Base as shown in Fig.1.
2. Slide the double arm base onto the base & tighten the grub screw as shown in Fig.2.
3. Fix the extended arm onto the double arm base with cap & M6 screw as shown in Fig.3. & tighten the grub screw as shown in Fig. 3a.
4. Fix the Diagonal arm onto Extended Arm with Cap & M6 screw & then tighten the grub screw as shown in Fig. 4.
5. Screw the Flat Screen to the Mounting plate as shown in Fig.5.
6. Pressure can be adjusted by tightening & loosening the screw as shown in Fig.6.
7. Tighten the screws to adjust the load of the Monitor as shown in Fig. 7.





FLAT SCREEN HOLDER - SINGLE ARM



Special Features

- Table top grommet mounting with single arm.
- Can be rotated towards left & right as well as tilted up & down with a single knob.
- Die cast for good aesthetics.
- Easy to fit.
- Height adjustment of 100mm.
- Compatible for VESA 75 x 75 & VESA 100 x 100 with an extra plate.
- Load capacity: ≤ 7 Kgs.

Specifications

| Item | Code Nos. | Finish |
|---------------------------------|-----------|----------------|
| Flat Screen Holder - Single Arm | FSHSA | BL /SL /WT/ AT |
| Extension Link | FSH-EL1 | |



Fitting Instructions

1. Drill $\varnothing 12.5$ mm hole throughout on table top on the desired position.
2. Fix the vertical pole as shown in Fig. 1.
3. Clip the height adjustment clip onto one of the holes on the vertical pole and slide the diagonal arm on to the pole from top till the bottom face of the arm rests on the height adjustment clip as shown in Fig. 2.
4. Assemble the other parts as shown in Fig. 3.
5. For VESA 100mm model, screw the 100mm plate to the hanging bracket with M4 screws as shown in Fig. 4.
6. Screw the flat screen to the hanging bracket with M4 screws provided as shown in Fig. 5.
7. Insert the monitor cables into the arm clip and wire holder, then clip them to the diagonal arm and vertical pole respectively, as shown in Fig. 6.

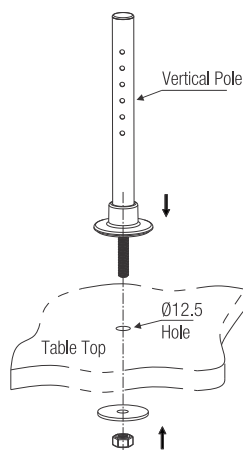


Fig. 1.

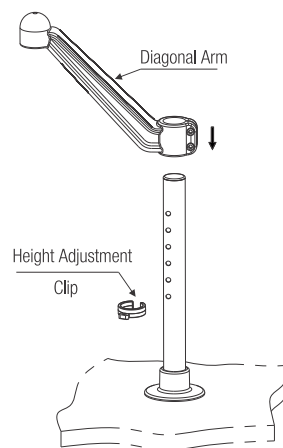


Fig. 2

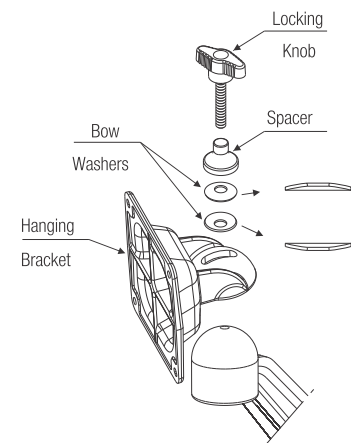


Fig. 3

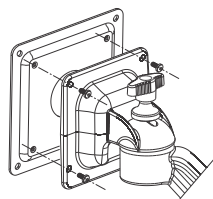


Fig. 4

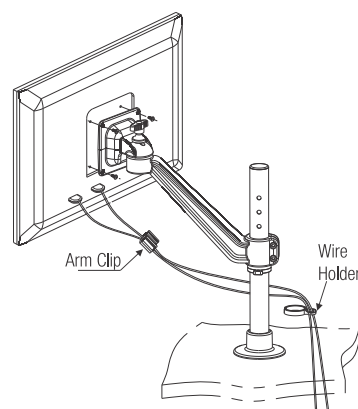
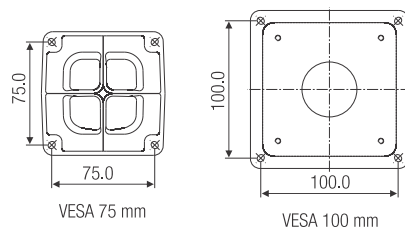


Fig. 5

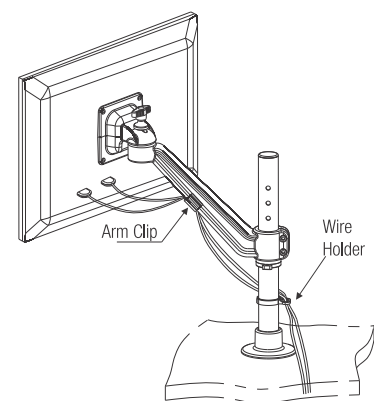


Fig. 6



FLAT SCREEN HOLDER SINGLE ARM - EDGE MOUNT



Special Features

- Table Top Edge Mounting with Single Arm.
- No Drilling of holes required.
- Height Adjustment of 100mm.
- Compatible for VESA 75 x 75 & VESA 100 x 100 with an extra plate.
- Die cast for good aesthetics.
- Can be rotated towards left & right as well as tilted up & down with a single knob.
- Load capacity: ≤7 Kgs.

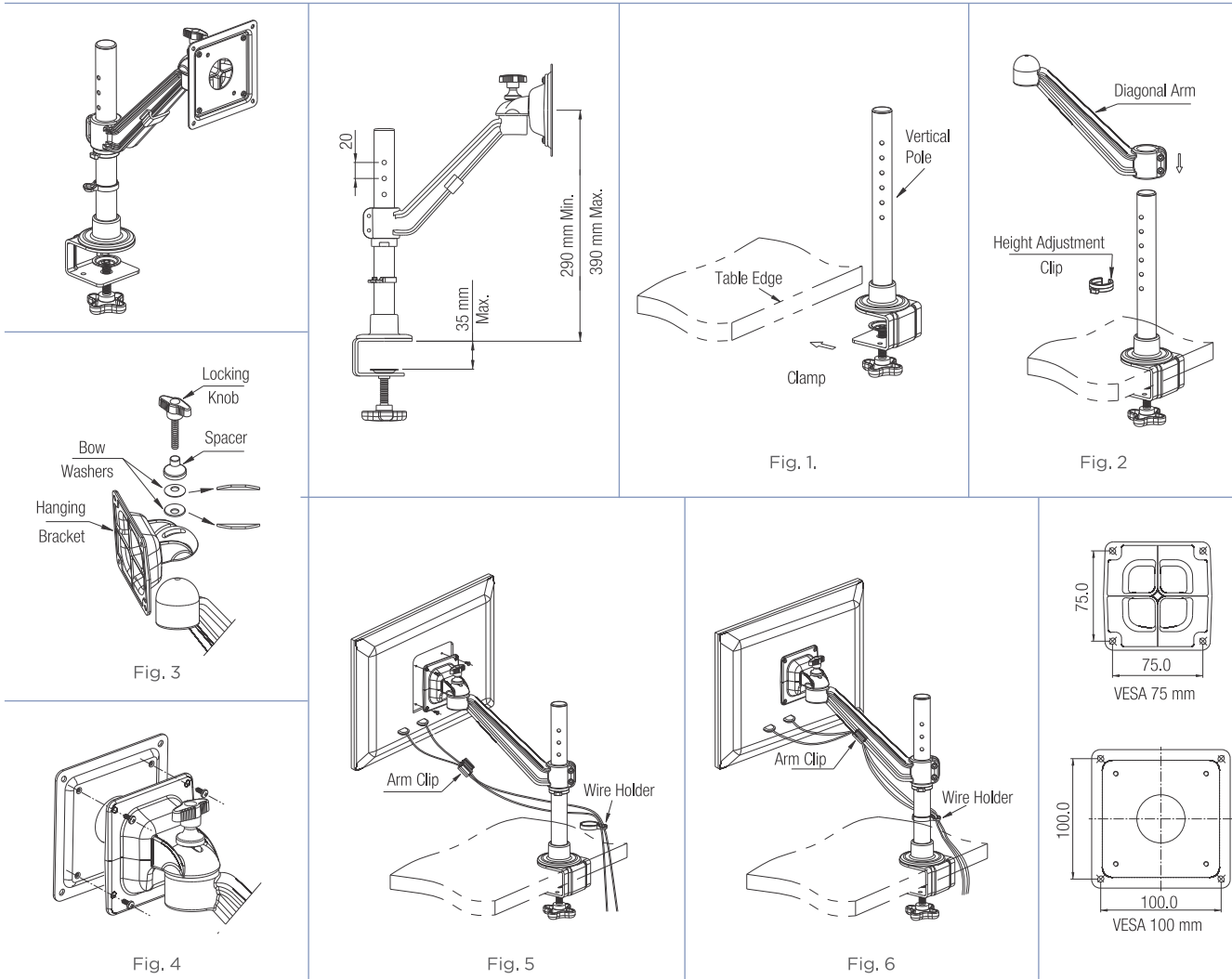
Specifications

| Item | Code Nos. | Finish |
|--|-----------|----------------|
| Flat Screen Holder Single Arm - Edge Mount | FSHSA-EM | BL /SL /WT/ AT |
| Extension Link | FSH-EL1 | |



Fitting Instructions

1. Clamp the vertical pole onto the edge of the table as shown in Fig.1.
2. Clip the height adjustment clip onto one of the holes on the Vertical Pole, & slide the diagonal arm on to the pole from top till the bottom face of the arm rests on the height adjustment clip, as shown in Fig. 2.
3. Assemble the other parts as shown in Fig. 3.
4. For Vesa 100 mm model screw the 100 mm plate to hanging bracket with M4 screws as shown in Fig. 4.
5. Screw the flat screen to the hanging bracket with M4 screws provided as shown in Fig. 5.
6. Insert the monitor cables into the arm clip & wire holder, then clip them to the diagonal arm & vertical pole respectively, as shown in Fig. 6.





FLAT SCREEN HOLDER - SINGLE ARM TWIN



Special Features

- Table top grommet mounting for two flat screens on a single pole.
- Can be rotated towards left & right as well as tilted up & down with a single knob.
- Die cast for good aesthetics.
- Easy to fit.
- Height adjustment of 100mm.
- Compatible for VESA 75 x 75 & VESA 100 x 100 with an extra plate.
- Load capacity: ≤7 Kgs. per arm.

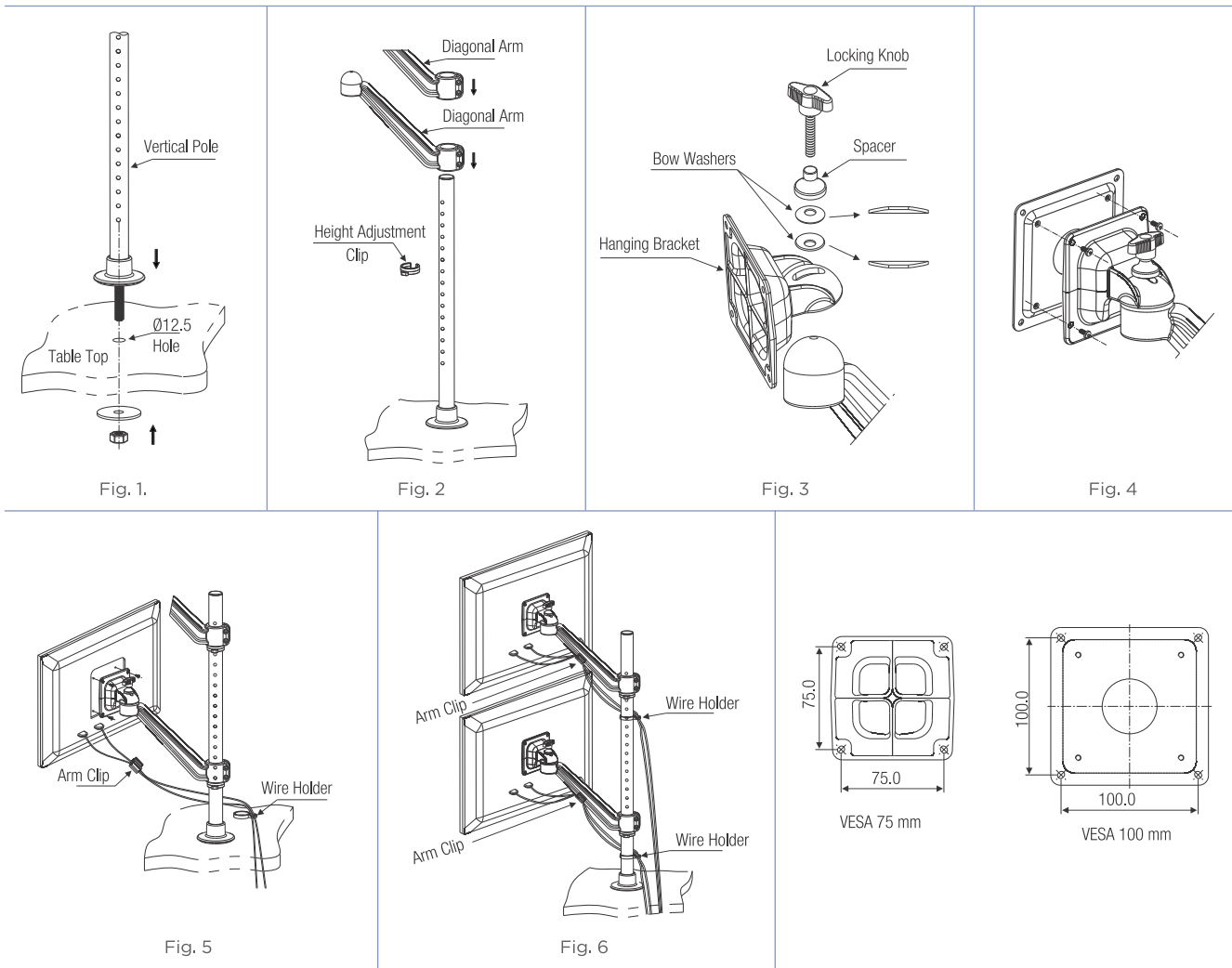
Specifications

| Item | Code Nos. | Finish |
|--------------------------------------|-----------|-------------|
| Flat Screen Holder - Single Arm Twin | FSHSAT | BL/SL/WT/AT |
| Extension Link | FSH-EL1 | |



Fitting Instructions

1. Drill Ø12.5mm hole throughout on table top on the desired position.
2. Fix the vertical pole as shown in Fig. 1.
3. Clip the height adjustment clip on to one of the holes on the vertical pole and slide the diagonal arm on to the pole from top till the bottom face of the arm rests on the height adjustment clip as shown in Fig. 2. Repeat for the second diagonal arm.
4. Assemble the other parts as shown in Fig. 3.
5. For VESA 100mm model, screw the 100mm plate to the hanging bracket with M4 screws as shown in Fig. 4.
6. Screw the flat screens to the hanging brackets with M4 screws provided as shown in Fig. 5.
7. Insert the monitor cables into the arm clips and wire holders, then clip them to the diagonal arms and vertical pole respectively, as shown in Fig. 6.





FLAT SCREEN HOLDER - DOUBLE ARM



Special Features

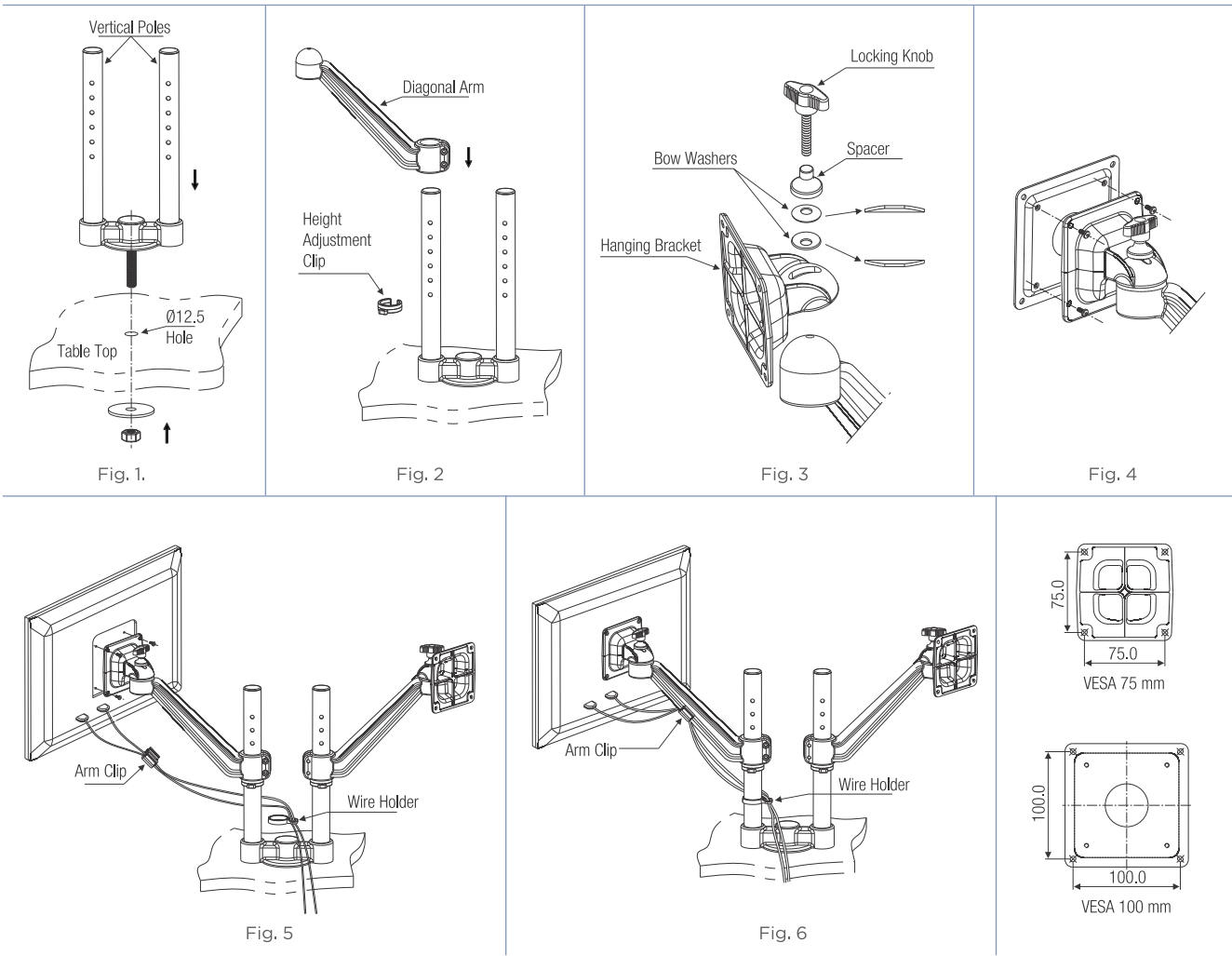
- Table top grommet mounting with double arm.
- Can be rotated towards left & right as well as tilted up & down with a single knob.
- Die cast for good aesthetics.
- Easy to fit.
- Height adjustment of 100mm.
- Compatible for VESA 75 x 75 & VESA 100 x 100 with an extra plate.
- Load capacity: ≤7 Kgs. per arm

Specifications

| Item | Code Nos. | Finish |
|---------------------------------|-----------|-------------|
| Flat Screen Holder - Double Arm | FSHDA | BL/SL/WT/AT |
| Extension Link | FSH-EL1 | |

Fitting Instructions

1. Drill Ø12.5mm hole throughout on table top on the desired position.
2. Fix the vertical pole as shown in Fig.1.
3. Clip the height adjustment clip on to one of the holes on the vertical pole and slide the diagonal arm on to the pole from top till the bottom face of the arm rests on the height adjustment clip as shown in Fig.2.
4. Assemble the other parts as shown in Fig.3.
5. For VESA 100mm model, screw the 100mm plate to the hanging bracket with M4 screws as shown in Fig.4.
6. Screw the flat screen to the hanging bracket with M4 screws provided as shown in Fig.5.
7. Insert the monitor cables into the arm clip and wire holder, then clip them to the diagonal arm and vertical pole respectively, as shown in Fig.6.





FLAT SCREEN HOLDER - DOUBLE EDGE MOUNT



Special Features

- Table Top Edge Mounting with Double Arm.
- Easy to Fit with manual adjustment.
- No Drilling of holes required.
- Height Adjustment of 100mm.
- Compatible for VESA 75 x 75 & VESA 100 x 100 with an extra plate.
- Diecast for good Aesthetics.
- Can be rotated towards left & right as well as tilted up & down with a single knob.
- Load capacity : <7 Kgs. per arm.
- Maximum table thickness 30mm.

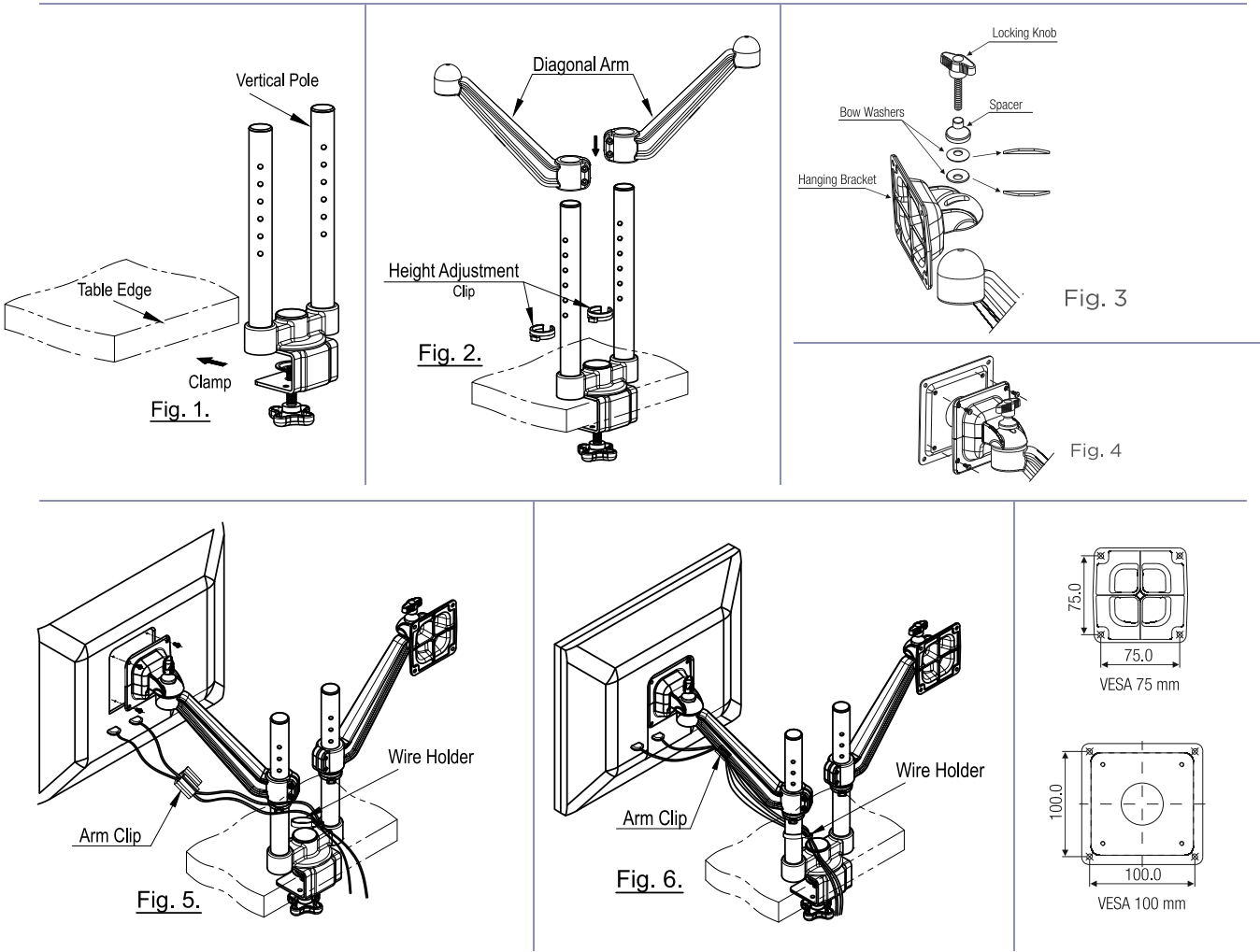
Specifications

| Item | Code Nos. | Finish |
|---|-----------|-------------|
| Flat Screen Holder - Double Arm (Edge Mount) | FSHDA-EM | BL/SL/WT/AT |
| Extension Link | FSH-EL1 | |



Fitting Instructions

1. Clamp the Vertical Pole onto the edge of the Table as shown in Fig.1.
2. Clip the Height Adjustment Clip onto one of the holes on the Vertical Pole, & slide the Diagonal arm onto the pole from top till the bottom face of the arm rests on the Height Adjustment Clip, as shown in Fig. 2.
3. Assemble the other parts as shown in Fig. 3.
4. For Vesa 100 mm model screw the 100 mm plate to hanging bracket with M4 screws as shown in Fig. 4.
5. Screw the flat screen to the hanging bracket with M4 screws provided as shown in Fig. 5.
6. Insert the Monitor cables into the Arm Clip & Wire Holder, then clip them to the Diagonal Arm & Vertical Pole respectively, as shown in Fig. 6.





FLAT SCREEN HOLDER - QUADRUPLE ARM



Special Features

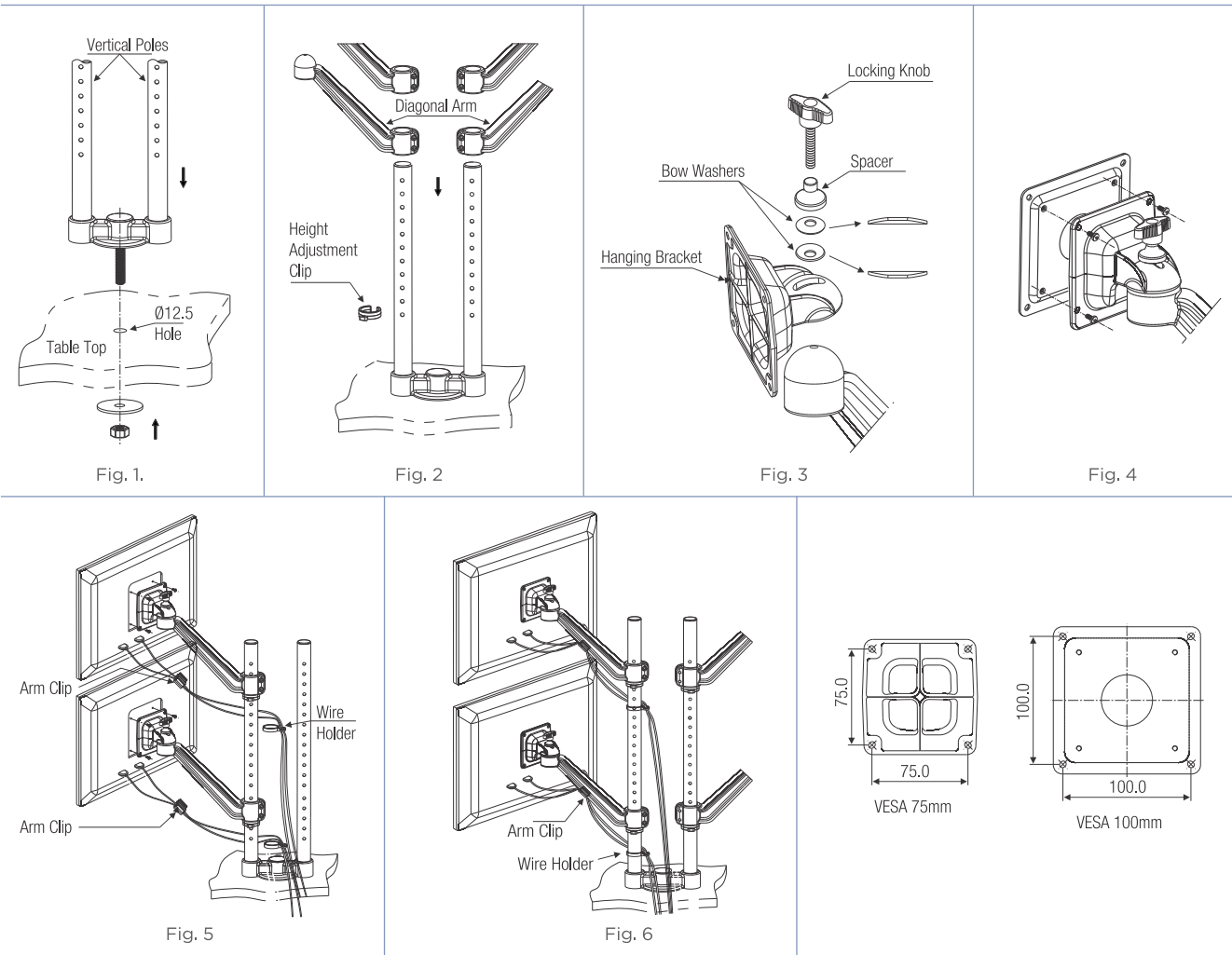
- Table top grommet mounting for four flat screen monitors on two poles.
- Can be rotated towards left & right as well as tilted up & down with a single knob.
- Die cast for good aesthetics.
- Height adjustment of 100mm.
- Compatible for VESA 75 x 75 & VESA 100 x 100 with an extra plate.
- Load capacity: ≤7 Kgs. per arm

Specifications

| Item | Code Nos. | Finish |
|------------------------------------|-----------|-------------|
| Flat Screen Holder - Quadruple Arm | FSHDAQ | BL/SL/WT/AT |
| Extension Link | FSH-EL1 | |

Fitting Instructions

1. Drill Ø12.5mm hole throughout on table top on the desired position.
2. Fix the vertical poles as shown in Fig. 1.
3. Clip the height adjustment clip on to one of the holes on the vertical pole and slide the diagonal arm on to the pole from top till the bottom face of the arm rests on the height adjustment clip as shown in Fig. 2. Repeat this until all four arms are fitted.
4. Assemble the other parts as shown in Fig. 3.
5. For VESA 100mm model, screw the 100mm plate to the hanging bracket with M4 screws as shown in Fig. 4.
6. Screw the flat screens to the hanging brackets with M4 screws provided as shown in Fig. 5.
7. Insert the monitor cables into the arm clips and wire holders, then clip them to the diagonal arms and vertical poles respectively, as shown in Fig. 6.





FLAT SCREEN HOLDER - WALL MOUNT



Special Features

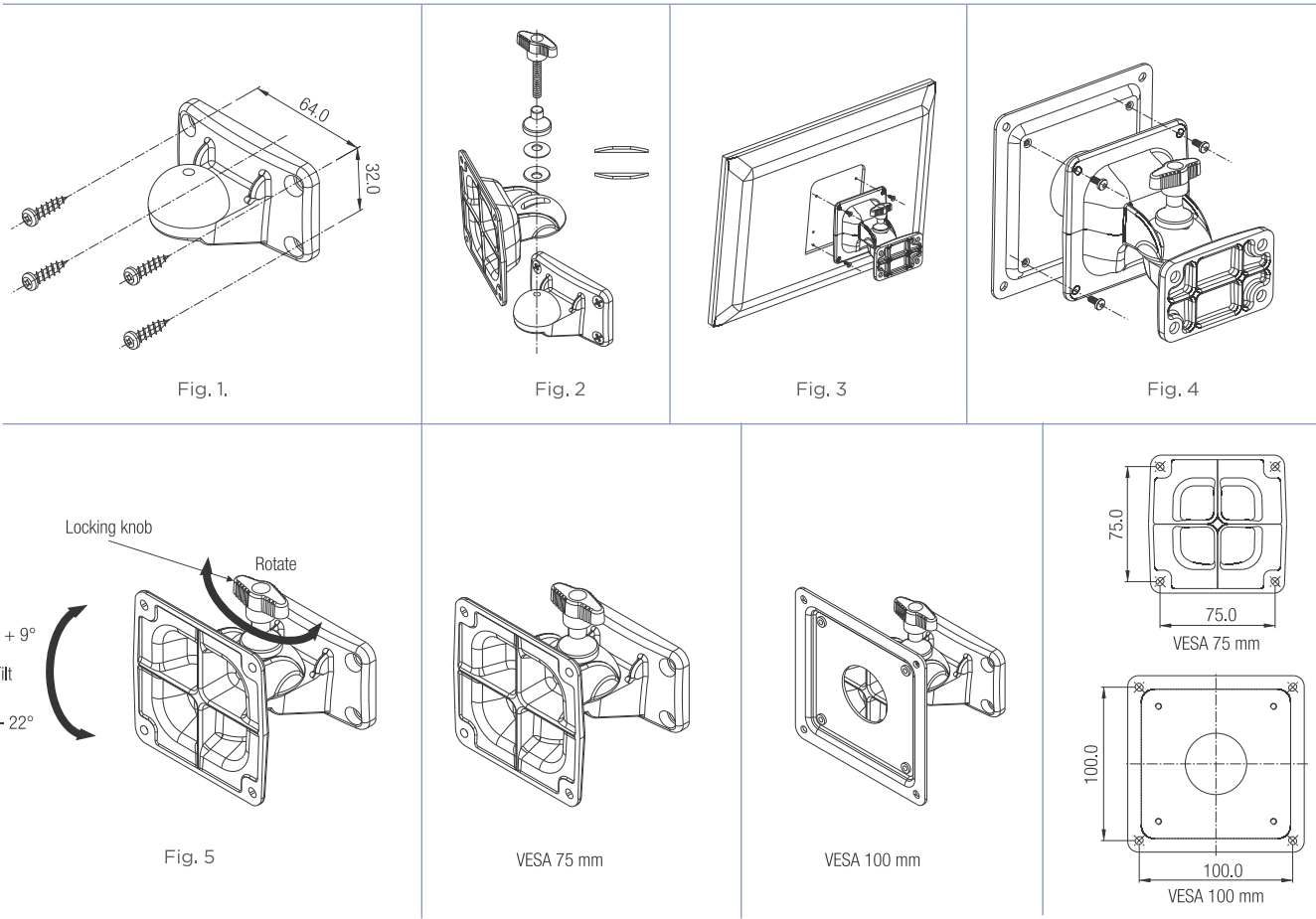
- Ideal for wall or partition mounting.
- Can be rotated towards left & right and well as tilted up & down.
- Single knob for locking all adjustments.
- Die cast for good aesthetics.
- Direct mounting with system 32 holes.
- Compatible for Vesa 75mm & Vesa 100mm with an extra plate.

Specifications

| Code No. | TV to Wall distance | Finish |
|----------|---------------------|-------------|
| FSHW-1 | 90mm | BL/SL/WT/AT |

Fitting Instructions

1. Screw the mounting bracket to the wall or partition with screws (Refer Fig.1).
2. Assemble other parts as shown in diagram (Refer Fig.2).
3. Screw the flat screen to the hanging bracket with M4 screws provided (Refer Fig.3).
4. For Vesa 100 mm model screw the 100 mm plate to hanging bracket with M4 screws (Refer Fig.4).
5. Rotation is possible left & right as well as up and down directions (Refer Fig.5).





FLAT SCREEN HOLDER WALL MOUNT - EXTENDED ARM



Special Features

- Ideal for wall or partition mounting.
- Compatible for Vesa 75mm & Vesa 100mm with an extra plate.
- Direct mounting with system 32 holes.
- Can be rotated towards left & right as well as tilted up & down.
- Double locking knobs gives ample adjustment.
- Extended arm keeps the screen away from wall thus gives ample space for rotation.
- Die cast for good aesthetics.

Flat Screen Holder-Extension Link (with knob & spring)

- Can be used as an extension with 'ebco' flat screen holder wall mount, flat screen holder single arm, double arm, single arm twin, and quadruple arm.

Specifications

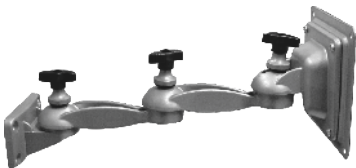
| Item | Code Nos. | TV to Wall distance | Finish |
|--|-----------|---------------------|-------------|
| Flat Screen Holder Extended Arm - Wall Mount | FSHWE-2 | 74-190mm | BL/SL/WT/AT |
| Flat Screen Holder -Extension Link (with knob & springs) | FSH-EL1 | - | |



Flat Screen Holder Extended Arm Wall Mount



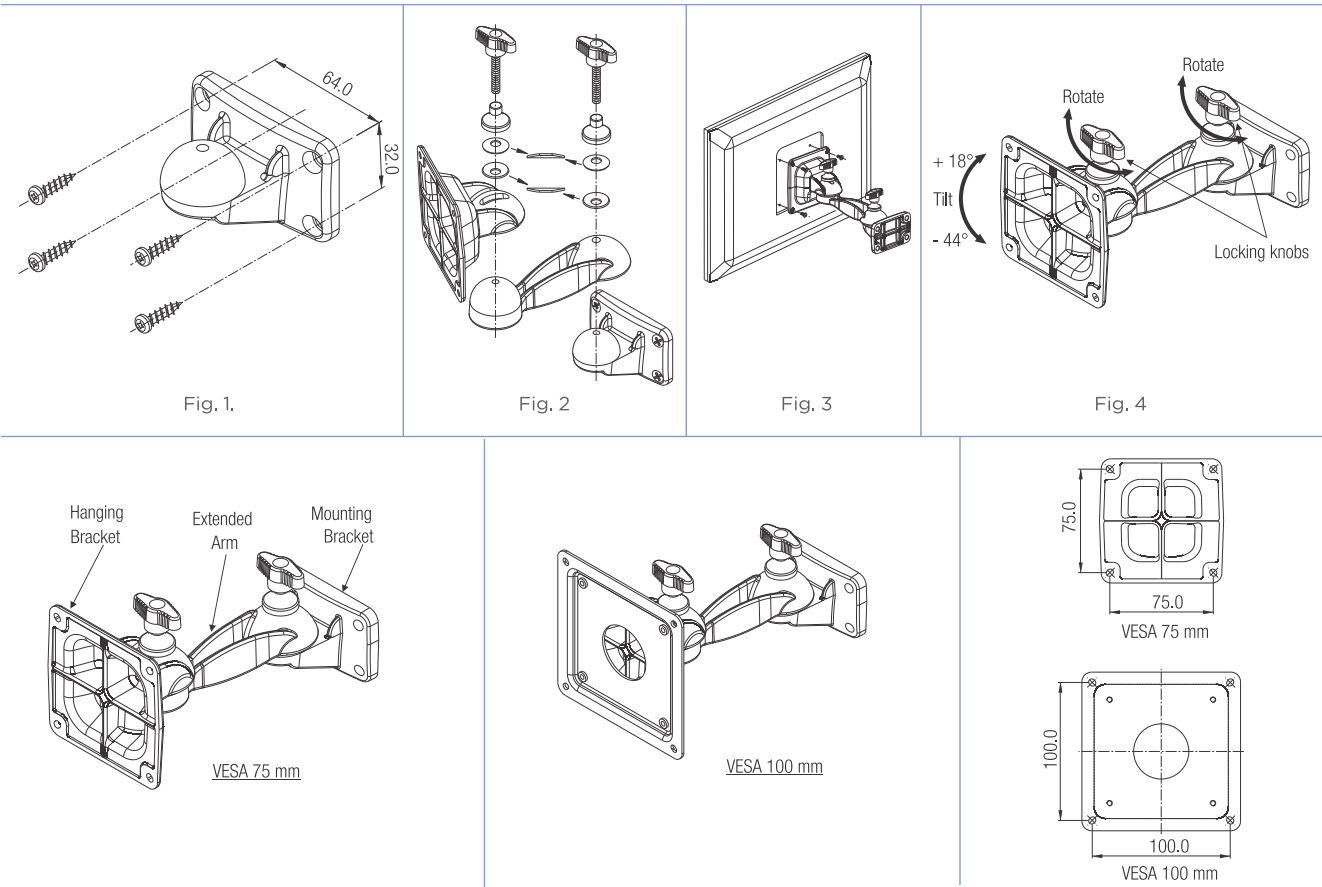
Extension Link



Flat Screen Holder-Extension Link (with knob & spring)

Fitting Instructions

1. Screw the Mounting Bracket to the wall or partition with screws (Refer Fig.1).
2. Assembly drawing (Refer Fig. 2).
3. Screw the flat screen to the hanging bracket with M4 screws provided (Refer Fig. 3).
4. For Vesa 100 mm model screw the 100 mm plate to hanging bracket with M4 screws.
5. Rotation is possible left & right as well as up & down directions (Refer Fig. 4).





ARTICULATED KEYBOARD STATION



Special Features

- Articulated Keyboard station with 360° swivel enables user to move keyboard freely as per their sitting posture.
- Soft palm rest and a stowaway soft pad provides rest to your wrists while working.
- Single knob system enables user to adjust height and tilt angle as required (Tilt angle +10° to -20°)
- Spring assisted to help counter balance.
- Low profile design for maximum leg room.

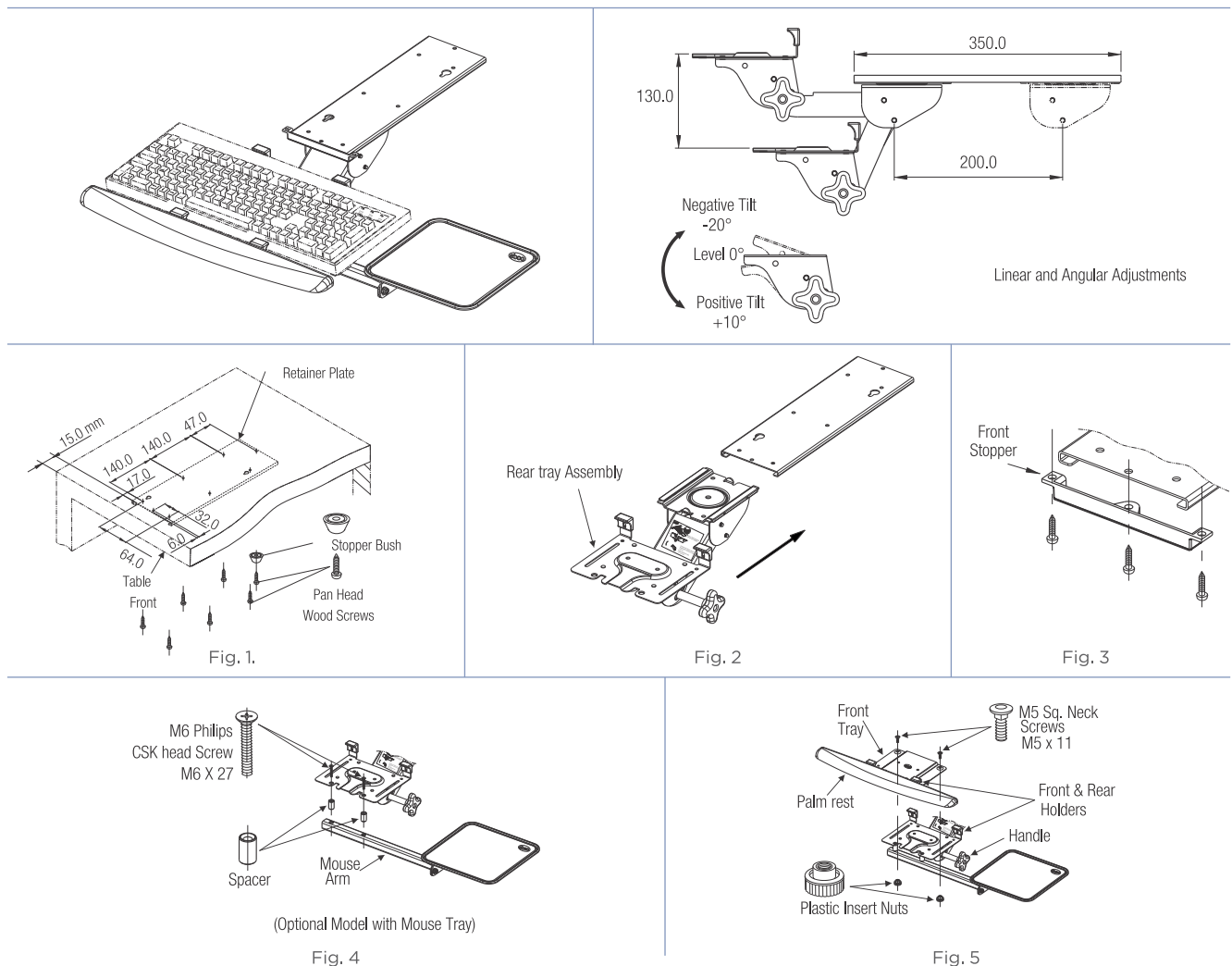


Specifications

| Item | Code Nos. | Finish |
|--------------------|-----------|--------|
| With Mouse Tray | AKS1 M | BL/AT |
| Without Mouse Tray | AKS1 | |

Fitting Instructions

1. Fit the retainer plate under the table top leaving 15 mm from the front. Fit the stopper bush at the rear end (Refer Fig. 1). Use pan head wood screws provided.
2. Slide the rear tray assembly into the retainer plate (Refer Fig. 2).
3. Screw the plastic front stopper onto the front end of the retainer plate (Refer Fig. 3).
4. Fit the optional mouse tray (Refer Fig. 4) Use M6 x 27 screws with spacers as shown.
5. Fit the front tray with M5 x 11 sq. neck screws and plastic insert nuts (Refer Fig. 5).
6. Keyboard is now inserted between front & rear holders and clamped tightly with plastic insert nuts.
7. Use handle to adjust angle, height as well as for storage.





COMPUTER KEYBOARD TRAY



Special Features

- Unique angled hand rest to prevent fatigue while working.
- Smooth quiet movement with ball bearings.
- Left or right side retractable mouse pad tray.
- Height adjustment on mounting brackets.
- Available with 200 & 250mm extension.
- Special compartment for pencil.
- Removable drawer with latches.
- Special pressure lock at extended position.
- Max. load : 12 kgs.



Keyboard Tray



Keyboard Tray with soft Palm

Specifications

| Item | Code Nos. | Length (mm) | Extension (mm) | Finish |
|------------------------------------|-----------|-------------|----------------|--------|
| With Mouse Tray | KBTM 35 | 350 | 200 | BL/WT |
| Without Mouse Tray | KBT 35 | | | |
| With Mouse Tray | KBTM 45 | 450 | 250 | |
| Without Mouse Tray | KBT 45 | | | |
| With Soft Pad & Mouse Tray | KTSM 35 | 350 | 200 | |
| With Soft Pad & without Mouse Tray | KTS 35 | | | |
| With Soft Pad & without Mouse Tray | KTS 45 | 450 | 250 | |

Fitting Instructions

1. Assemble height adjustment brackets on to slides using M4 screw provided as in Fig.1.
2. Drill as per drilling diagram Fig. 2.
3. Height adjustment bracket should be adjusted for desired height.
4. Screw the keyboard tray onto the table. Table should have minimum horizontal gap of 600mm.
5. Slide the keyboard tray out till it automatically latches.
6. To remove tray lift latches provided on each sides and pull as per Fig. 3.

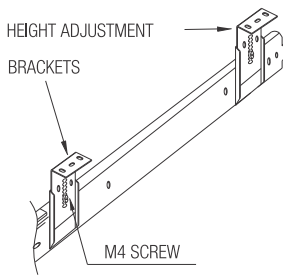


Fig. 1.

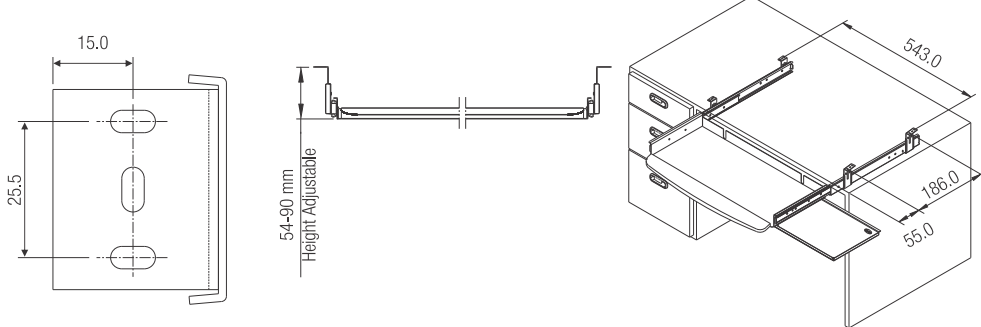


Fig. 2.

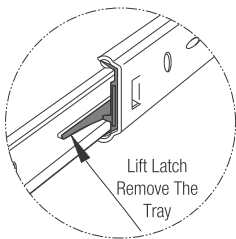
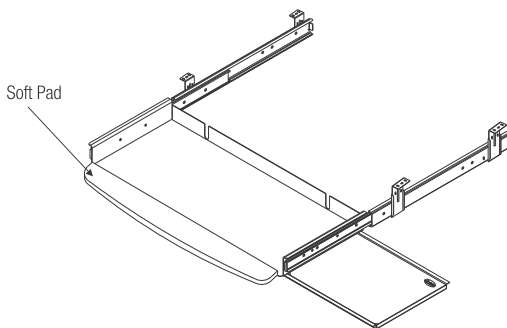
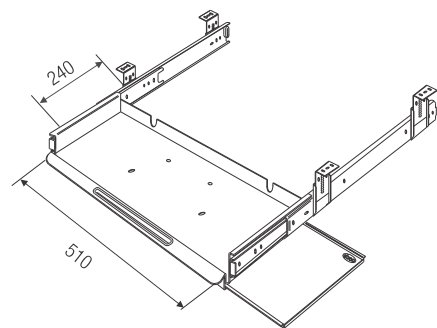


Fig. 3.



Computer Keyboard Tray with Soft Pad



Computer Keyboard Tray with Mouse Tray



KEYBOARD TRAY FULL EXTENSION - SOFT PAD



Special Features

- Specially designed with full extension slide.
- Smooth quiet movement with ball bearings.
- Soft palm provided to prevent fatigue while working.
- Height adjustment on mounting brackets.
- Locks at extended position.
- Direct front installation.
- Max. load 12 Kgs.



Specifications

| Code No. | Length in mm | Extension in mm | Finish |
|----------|--------------|-----------------|---------------------|
| KTS25FE | 250 | 260 | Powder Coated Black |

Fitting Instructions

1. Minimum horizontal gap required 600 mm.
2. Drill as per drilling diagram Fig.1.
3. Assemble height adjustment brackets on to slides using M4 screw provided as in Fig.2.
4. Height adjustment bracket should be adjusted for desired height.
5. Screw the mounting bracket onto the table as shown in Fig. 3.

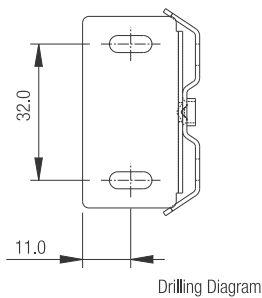


Fig. 1.

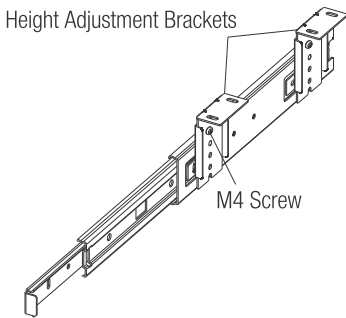


Fig. 2

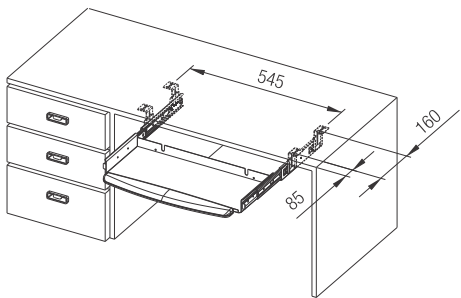
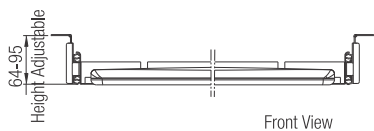
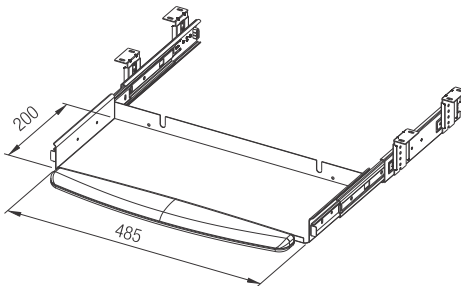
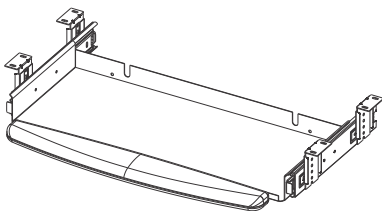


Fig. 3



Front View





COMPUTER KEYBOARD TRAY - JUMBO



Special Features

- Made for extra large multimedia keyboard.
- Has specially designed palm rest.
- Height adjustment on mounting brackets.
- Smooth quiet movement with ball bearings.
- Removable drawer with latches.
- Special pressure lock at extended position.

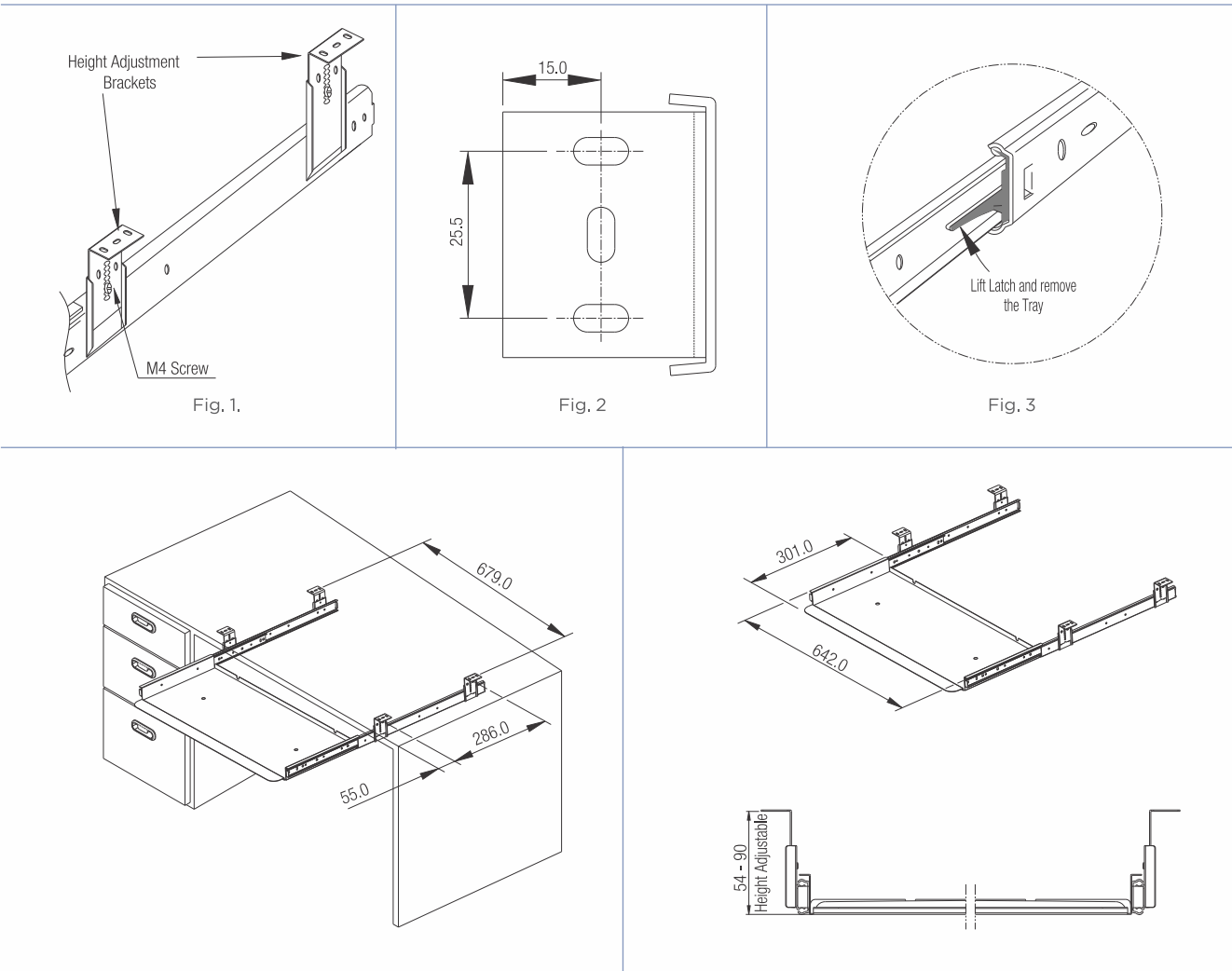


Specifications

| Code No. | Finish |
|----------|--------|
| KBTJ 1 | BL/WT |

Fitting Instructions

1. Assemble height adjustment brackets on to slides using M4 screws provided as in Fig.1.
2. Drill as per drilling diagram Fig.2.
3. Height adjustment bracket should be adjusted for desired height.
4. Screw the key board onto the table. Table should have minimum horizontal gap of 700mm.
5. Slide the Keyboard Tray out till it automatically latches.
6. To remove tray, lift latches provided on each sides and pull as per Fig.3.





COMPUTER KEYBOARD TRAY CURVE



Special Features

- Unique arched hand rest to prevent fatigue while working.
- Smooth quiet movement with telescopic slides.
- Height adjustment on mounting brackets.
- Locks at extended position.
- Comes with a formed pencil tray.
- Direct front installation.
- Max. load 12 kgs.

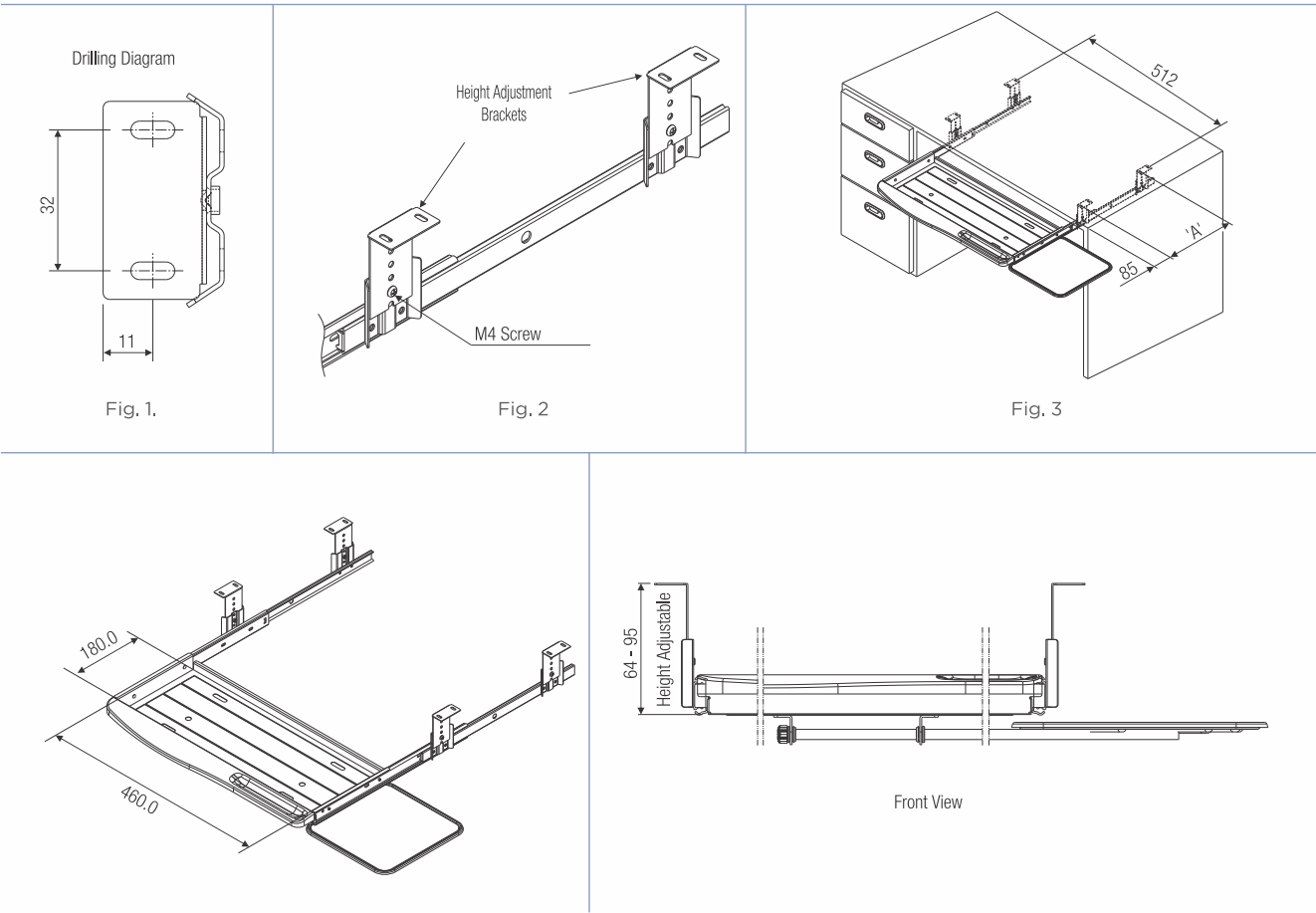


Specifications

| Item | Code Nos. | Length (mm) | Extension (mm) | Dim. 'A' in mm | Finish |
|--------------------|-----------|-------------|----------------|----------------|--------|
| With Mouse Tray | KBTC 35M | 350 | 240 | 255 | BL/WT |
| Without Mouse Tray | KBTC 35 | | | | |

Fitting Instructions

1. Minimum horizontal gap required is 550mm.
2. Drill as per drilling diagram as in Fig. 1.
3. Assemble height adjustment brackets on to the slides using M4 screws provided as in Fig. 2.
4. Height adjustment bracket should be adjusted for desired height.
5. Screw the mounting bracket 85mm distance from the front edge of the table and to other end 255mm & 355mm respectively for 350mm & 450mm slides (Refer Fig. 3).





COMPUTER KEYBOARD TRAY - ECO



Special Features

- Unique angled hand rest to prevent fatigue while working.
- Smooth quiet movement with ball bearings.
- Left or right side retractable mouse pad tray.
- Height adjustment on mounting brackets.
- Locks at extended position.
- Direct front installation.
- Max. load 12 kgs.

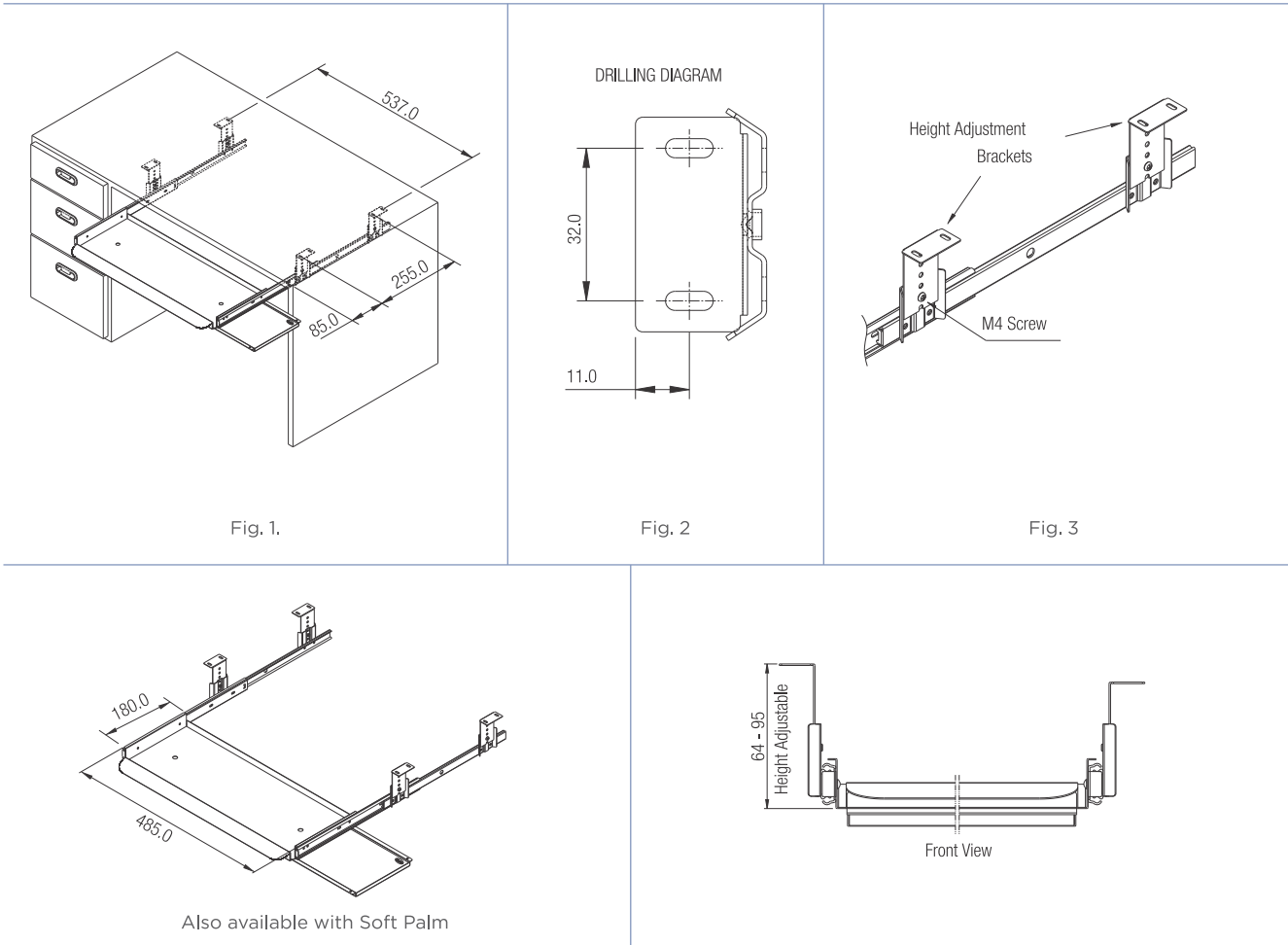


Specifications

| Item | Code Nos. | Finish |
|--------------------|-----------|--------|
| Without Mouse Tray | KTE1-35 | BL/WT |
| | KTE1-45 | |
| With Mouse Tray | KTE1-35M | |
| | KTE1-45M | |

Fitting Instructions

1. Minimum horizontal gap required 600 mm.
2. Screw the mounting brackets at 85 mm distance from the front edge of the table and to other 255 mm (Refer Fig. 1).
3. Drill as per drilling diagram Fig. 2.
4. Assemble height adjustment brackets on to slides using M4 screw provided as in Fig. 3.
5. Height adjustment bracket should be adjusted for desired height.





PLASTIC KEYBOARD BASE

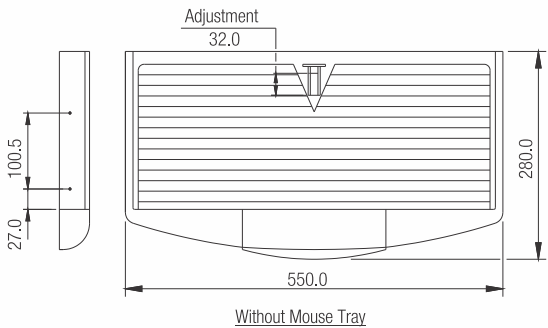


Special Features

- Can be used with 'Ebco' computer keyboard slides as well as 'Eco' keyboard slides.
- Unique compartment for pencils and pens.

Specifications

| Model | Code Nos. | Finish |
|-----------------------|-------------|--------|
| Plastic Keyboard Base | PPK 1 | BL/GR |
| Recommended Slides | CKDS 45 | ZW/ZB |
| | CKSE 35 (I) | |



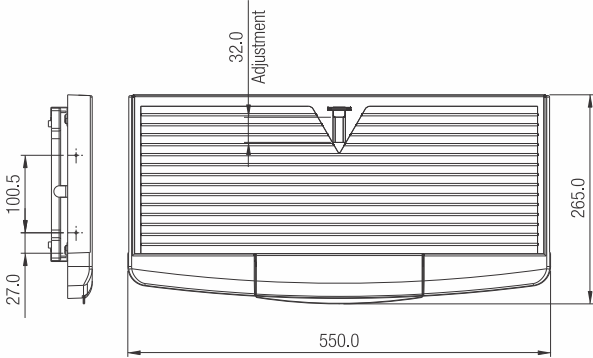
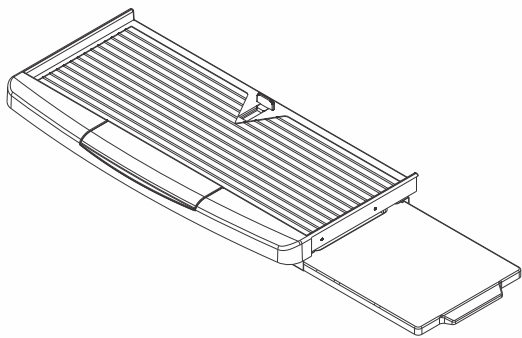
PLASTIC KEYBOARD BASE - WITH SLIDING MOUSE TRAY

Special Features

- Can be used with 'Ebco' computer keyboard slides as well as 'Eco' keyboard slides.
- Made out of durable plastics.
- Unique compartment for pencils & pens.
- Left or right side Sliding Mouse Pad Tray.

Specifications

| Model | Code Nos. | Finish |
|---|-------------|--------|
| Plastic Keyboard Base with Sliding Mouse Tray | PPKM 2 | BL |
| Recommended Slides | CKDS 45 | ZW/ZB |
| | CKSE 35 (I) | |



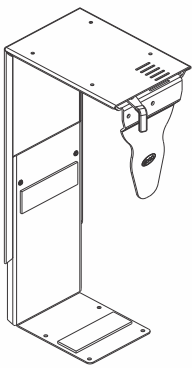


Special Features

- Easy to fit & Install.
- Ideal for storage of C.P.U. under the table.
- Unique Locking Lever helps lock the Side Locking Bracket in place.
- Height adjustment: 300 mm to 550 mm.
- Width adjustment: 70 mm 250 mm.

Specifications

| Code No. | Finish |
|----------|----------|
| CPUSB | BL/AT/WT |



Fitting Instructions

1. Fit the L-Bracket under the table top as shown in fig.1.
2. Adjust the Height Adjustment Bracket to suitable height of the C.P.U. and tighten the grub screws provided properly. (Ref. Fig.2)
3. Place the C.P.U. and insert the Side Locking Bracket. (Ref. Fig.3) While inserting the Side locking Bracket ensure that the Locking Lever is in open position. (Ref. Fig.4A)
4. Lock the C.P.U. with Locking Lever by turn to the right. (Ref. Fig. 4B)

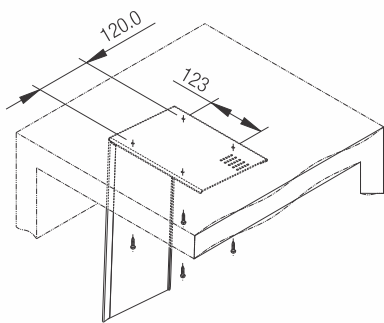


Fig. 1

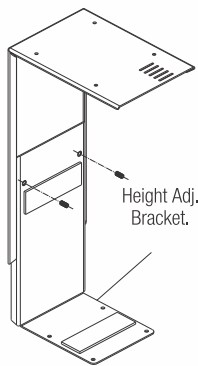


Fig. 2

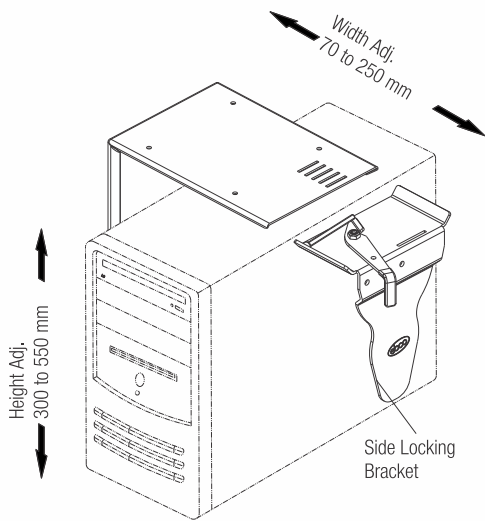
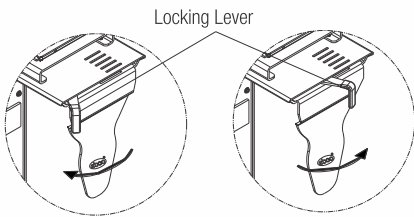


Fig. 3



To Open

To Lock

Fig.4A

Fig. 4B



Special Features

- Ideal for storage of C.P.U. under the table.
- Unique locking lever helps lock the side locking bracket in place.
- C.P.U. can be pulled out and swivelled.
- Height adjustment: 300 mm to 550 mm.
- Width adjustment: 70 mm to 250 mm.

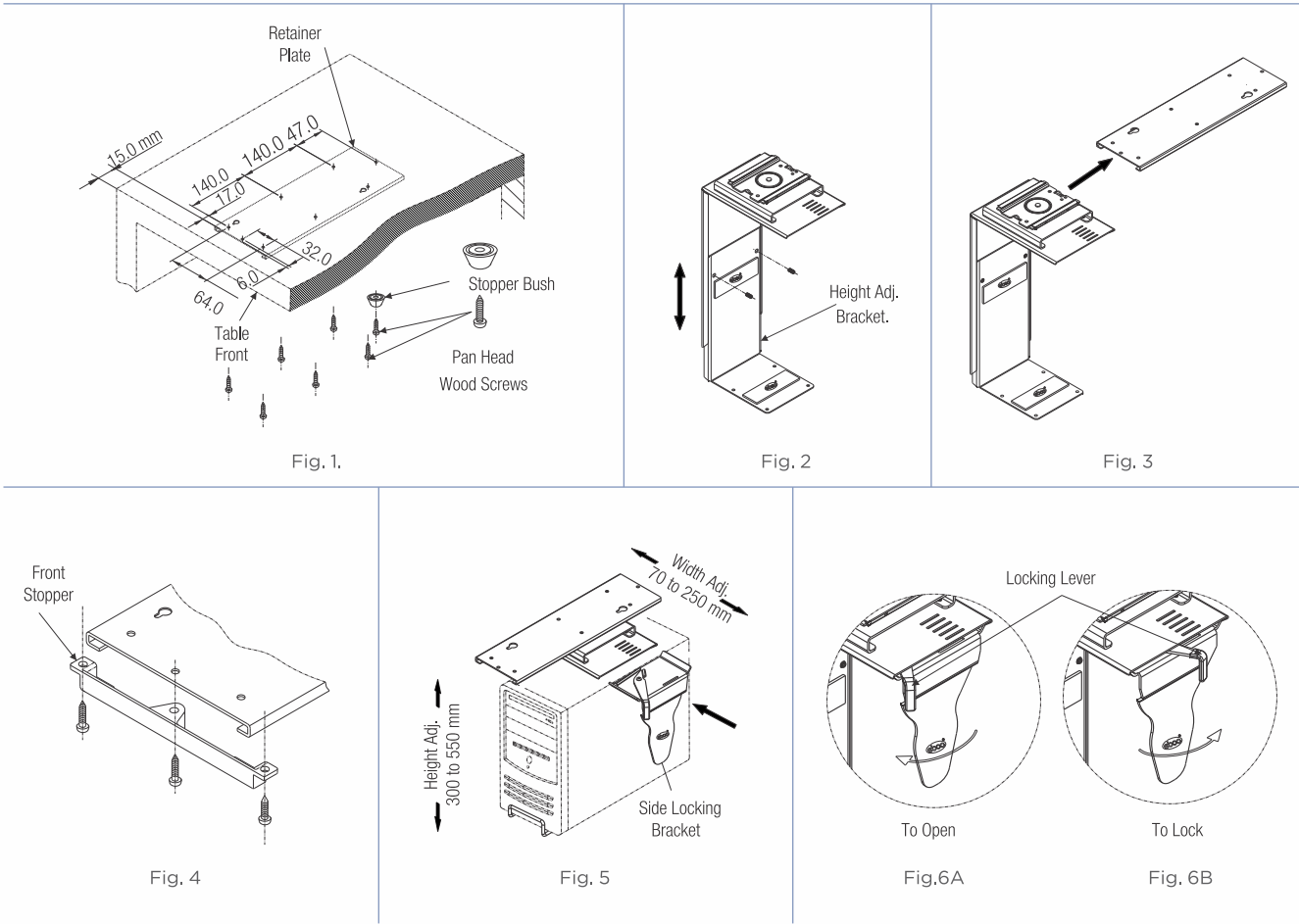
Specifications

| Code No. | Finish |
|----------|----------|
| CPUSN | BL/AT/WT |



Fitting Instructions

1. Fit the retainer plate under the table top leaving 15 mm from the front. Fit the stopper bush at the rear end (Refer Fig.1). Use pan head wood screws provided.
2. Adjust the height adjustment bracket to suitable height of the C.P.U. and tighten the grub screws provided properly (Refer Fig.2).
3. Slide the assembly into the retainer plate (Refer Fig.3).
4. Fix the front stopper to the front end of retainer plate (Refer Fig.4).
5. Place the C.P.U. and insert the side locking bracket (Refer Fig.5). While inserting the side locking bracket ensure that the locking lever is in open position (Refer Fig.6A).
6. Lock the C.P.U. with locking lever by turn to the right (Refer Fig.6B).





CPU STATION WITH LOCK



Special Features

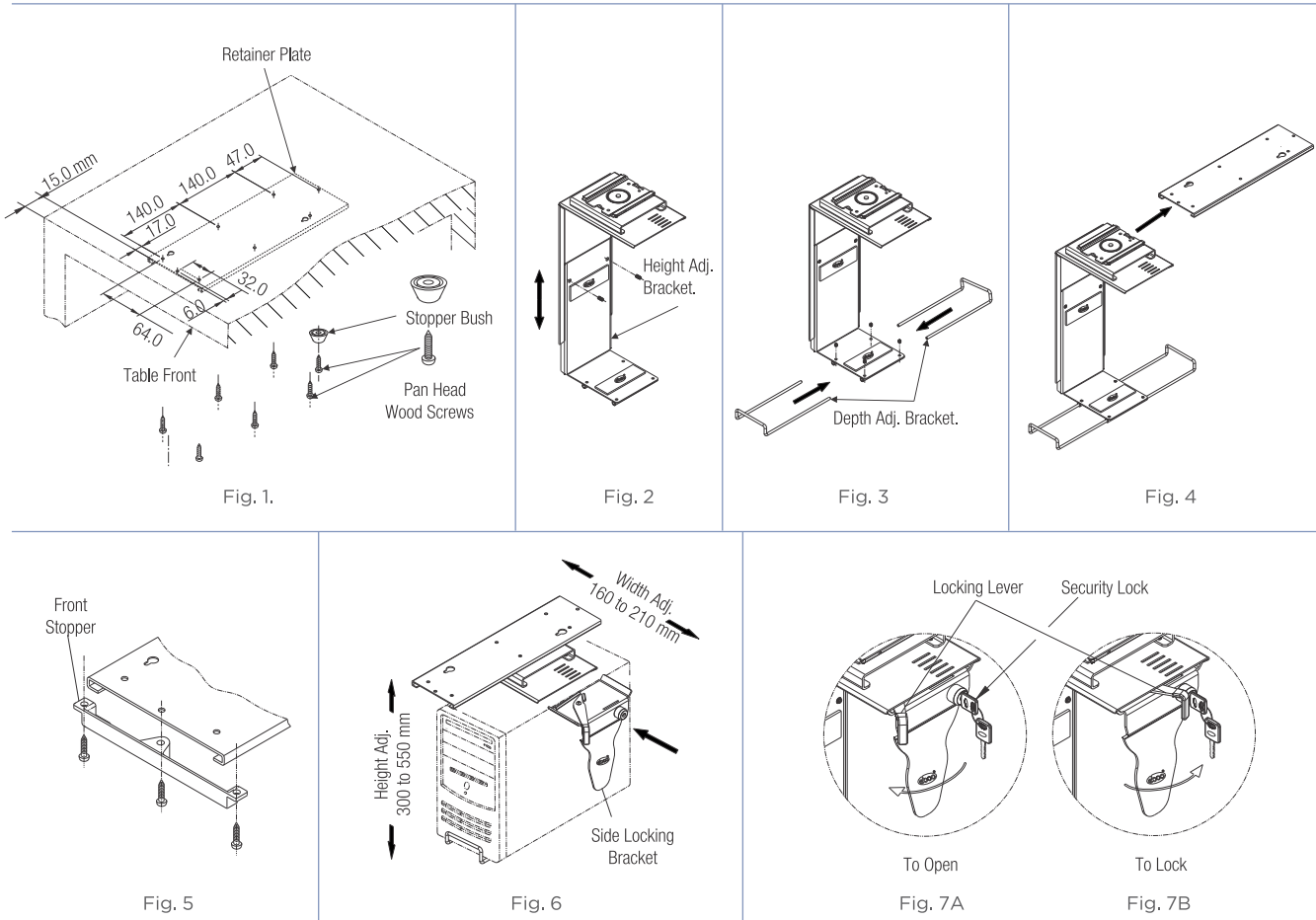
- Ideal for storage of C.P.U. under the table.
- Unique locking lever helps lock the side locking bracket in place.
- C.P.U. can be pulled out and swivelled.
- Security lock with keys incorporated in design.
- Height adjustment: 300 mm to 550 mm.
- Width adjustment: 160 mm to 210 mm.

Specifications

| Code No. | Finish |
|----------|----------|
| CPUSL | BL/AT/WT |

Fitting Instructions

1. Fit the retainer plate under the table top leaving 15 mm from the front. Fit the stopper bush at the rear end (Refer Fig. 1). Use pan head wood screws provided.
2. Adjust the height adjustment bracket to suitable height of the C.P.U. and tighten the grub screws provided properly (Refer Fig. 2).
3. Assemble the depth adjustment brackets to suitable depth of C.P.U. as shown in diagram and tighten the grub screws provided (Refer Fig. 3).
4. Slide the assembly into the retainer plate (Refer Fig.4).
5. Fix the front stopper to the front end of retainer plate (Refer Fig. 5).
6. Place the C.P.U. and insert the side locking bracket (Refer Fig. 6). While inserting the side locking bracket ensure that the locking lever is in open position (Refer Fig. 7A).
7. Lock the C.P.U. with locking lever (Ref. Fig. 7B). Additional lock provided for the security of the C.P.U.





TELESCOPIC CPU STAND Design Reg. 191687/03

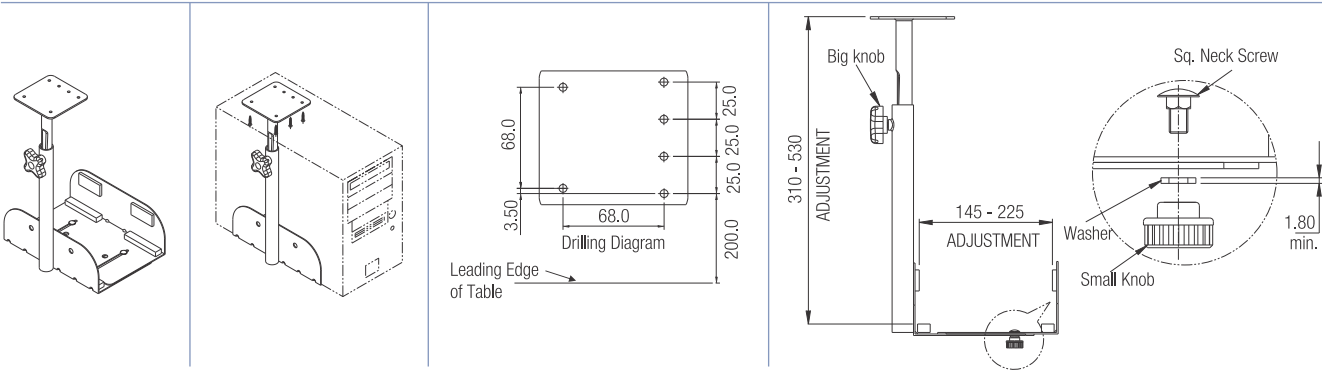


Special Features

- Stores C.P.U. under the table and saves space.
- Soft anti-vibration pads provided.
- No tools needed for adjusting height and width range.
- Width adjustment from 145 mm to 225 mm.
- Height adjustment from 310 mm to 530 mm.
- Safe load-20kgs.
- Material-Steel.

Specifications

| Code No. | Finish |
|----------|----------|
| CPUS(T)1 | BL/AT/WT |



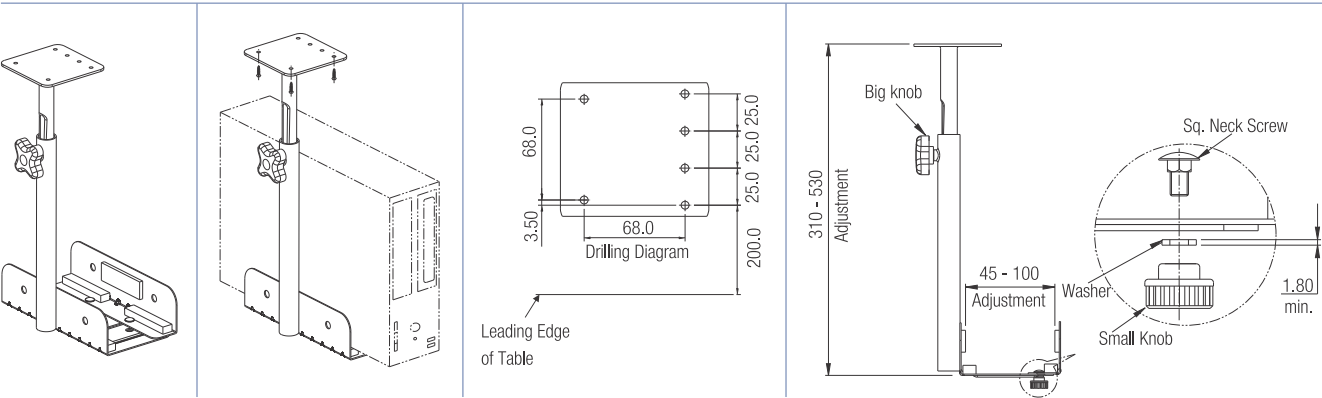
TELESCOPIC CPU STAND - SLIM

Special Features

- Stores C.P.U. under the table and saves space.
- Soft anti-vibration pads provided.
- No tools needed for adjusting height and width range.
- Width adjustment from 45 mm to 100 mm.
- Height adjustment from 310 mm to 530 mm.
- Safe load-20 Kgs.
- Material-Steel.

Specifications

| Code No. | Finish |
|----------|----------|
| CPUS-TS | BL/AT/WT |





CPU STAND



Special Features

- Computer C.P.U. stand for storage of C.P.U. unit conveniently under the table.
- This saves valuable desk top space.
- Soft vibration pads provided.
- Width adjustment of 100mm (4") provided.



Specifications

| Item | Code Nos. | Mounting | Wheel Dia. (mm) | Load (kgs.) | Material | Finish |
|--------------|-----------|-------------------|-----------------|-------------|--------------------------|----------|
| C.P.U. Stand | CPUS 1 | Twin Wheel Castor | 40 | 25 | Steel with Nylon Castors | BL/AT/WM |

Fitting Instructions

1. Join the base plate and side brackets with screws and washers provided. (Ref. Fig.1)
2. Width adjustment available is 130 mm min. and 230 mm max.

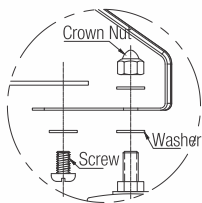
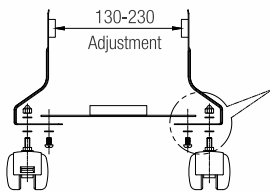
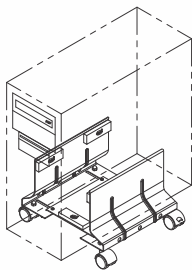


Fig. 1.

CPU STAND-ECO

Special Features

- Computer C.P.U. stand for storage of C.P.U. unit conveniently under the table.
- This saves valuable desk top space.
- Soft vibration pads provided.
- Width adjustment of 105mm (4") provided.



Specifications

| Item | Code Nos. | Mounting | Wheel Dia. (mm) | Load (kgs.) | Material | Finish |
|------------------|-----------|-------------------|-----------------|-------------|--------------------------|----------|
| C.P.U. Stand-Eco | CPUS E1 | Twin Wheel Castor | 30 | 12 | Steel with Nylon Castors | BL/AT/WM |

Fitting Instructions

1. Join the base plate and side brackets with screws and washers provided. (Ref. Fig.1)
2. Width adjustment available is 100 mm min. and 205 mm max.

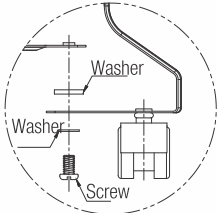
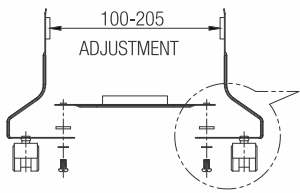
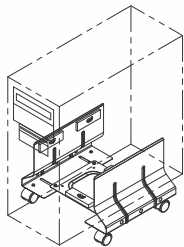


Fig. 1.



SIDE MOUNTING CPU STAND



Special Features

- Saves valuable working space.
- Direct mounting no assembly.
- Soft anti-vibration pads provided.
- Width adjustment from 145mm to 225mm.
- No tools needed for adjusting width range.
- Safe load-20kgs.
- Material-Steel.

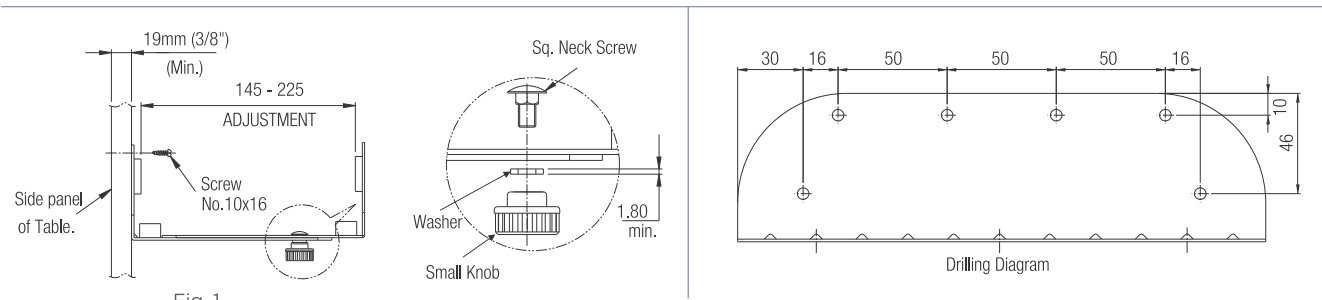
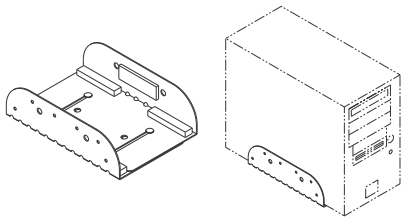


Specifications

| Code No. | Finish |
|----------|----------|
| CPUSM | BL/AT/WT |

Fitting Instructions

1. Recommended side panel thickness is 19mm minimum (Refer Fig.1).
2. Fix to side panel of table using 6 screws No. 10 x 16mm (Refer Fig.1).



SIDE MOUNTING CPU STAND - SLIM

Special Features

- Saves valuable working space.
- Direct mounting and no assembly.
- Soft anti vibration pads provided.
- No tools needed for adjusting width range.
- Width adjustable from 45mm to 100mm
- Safe load - 20kgs.

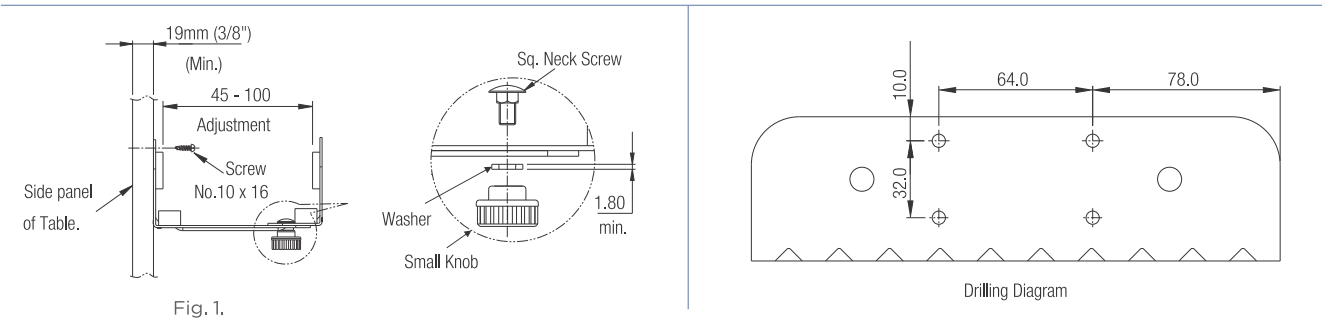
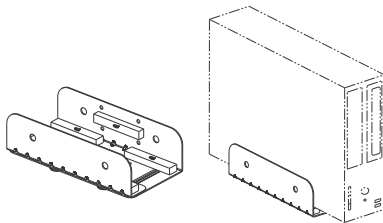


Specifications

| Code No. | Finish |
|----------|----------|
| CPUSM-S | BL/AT/WT |

Fitting Instructions

1. Recommended side panel thickness is 19mm minimum (Refer Fig.1).
2. Fix to side panel of table using 4 screws No. 10 x 16mm (Refer Fig.1).





SAFE DRAWER - SINGLE

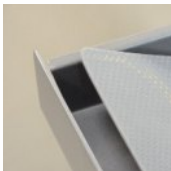


Special Features

- A useful product made specially for office tables.
- Conveniently designed for storage of laptop etc.
- Maximum laptop size : 390 x 270 x 40mm.
- Cam lock provided.
- Antiskid mat - Optional.
- Fitted on ball cage slides.
- Full extension of drawer 300mm.
- System 32 compatible.
- Easy to fit & use.
- Weight capacity : 12 kg.

Specifications

| Item | Code No. | Finish |
|---------------------------------|----------|--------|
| Safe Drawer - Single (W/O Mat) | SD-TM1 | AT/WT |
| Safe Drawer - Single (With Mat) | SDM-TM1 | |



Antiskid Mat



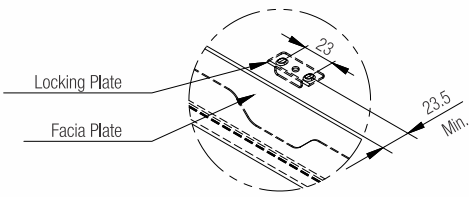
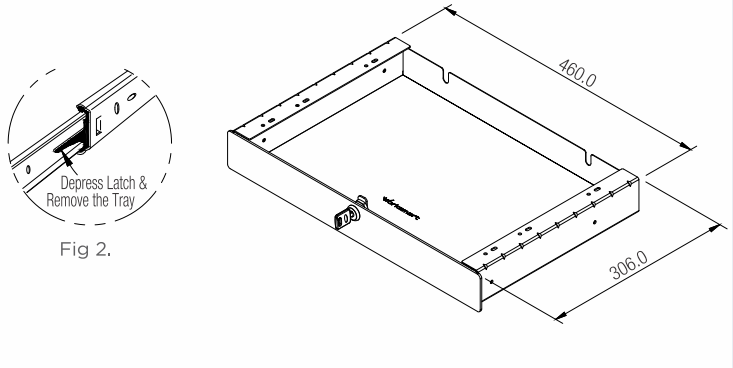
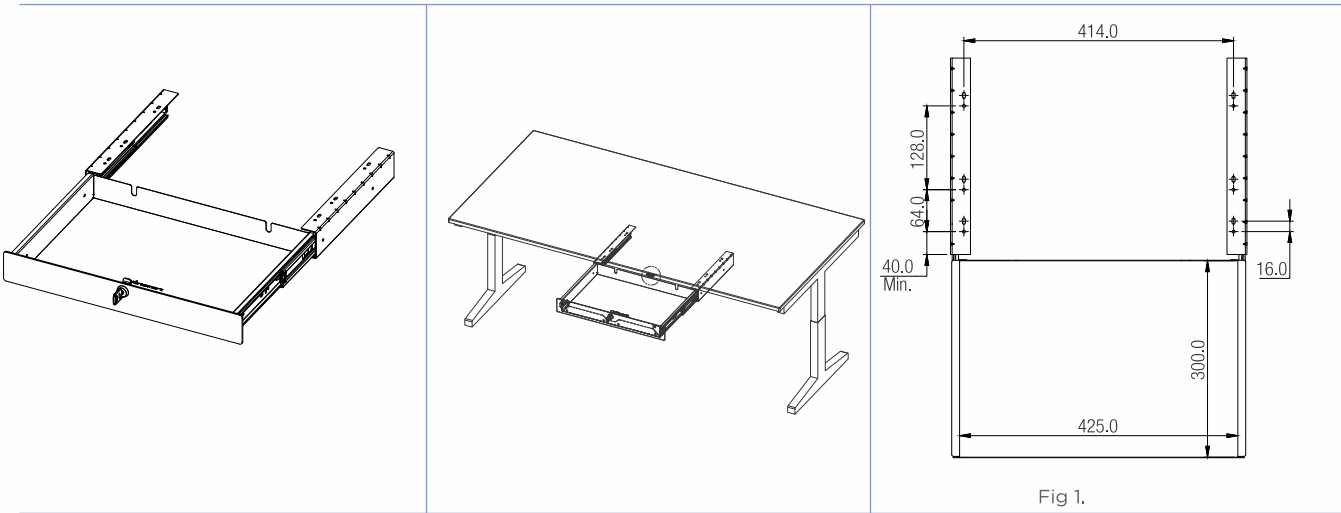
Safety Lock



Safety Bracket

Fitting Instructions

1. Minimum horizontal width required 470mm.
2. Drill as per drilling diagram as shown in Fig. 1.
3. Screw the mounting brackets onto the table top.
4. Slide in the laptop tray till it automatically latches.
5. Tray can be removed by depressing the latches on each side and pulling the tray out as shown in Fig 2.





SAFE DRAWER - DOUBLE



Special Features

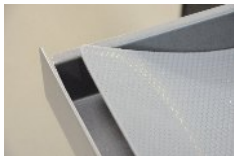
- A useful product made specially for sit/stand tables.
- Conveniently designed for storage of laptop in top lockable drawer & stationery items in bottom drawer.
- Maximum laptop size : 390 x 270 x 40mm.
- Cam lock provided in top drawer.
- Antiskid mat - Optional.
- Fitted on ball cage slides.
- Full extension of drawer 300mm.
- System 32 compatible.
- Easy to fit & use.
- Weight capacity : 30 kg.

Specifications

| Item | Code No. | Finish |
|---------------------------------|----------|--------|
| Safe Drawer - Double (W/O Mat) | SD-TM1D | AT/WT |
| Safe Drawer - Double (With Mat) | SDM-TM1D | |

Fitting Instructions

1. Minimum horizontal width required 470mm.
2. Drill as per drilling diagram as shown in Fig. 1.
3. Screw the mounting brackets onto the table top.
4. Slide in both the trays till it automatically latches.
5. Both trays can be removed by depressing the latches on each side and pulling the tray out as shown in Fig 2.



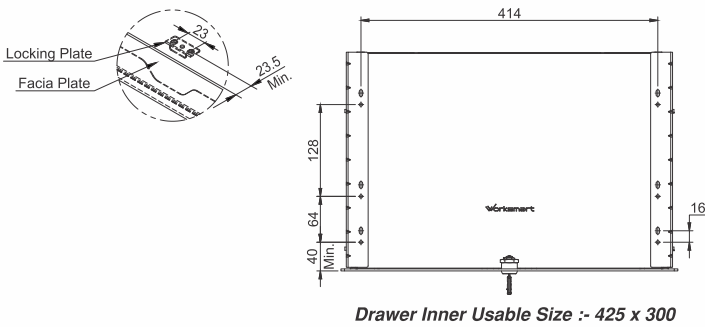
Antiskid Mat



Safety Lock



Safety Bracket



Drawer Inner Usable Size :- 425 x 300

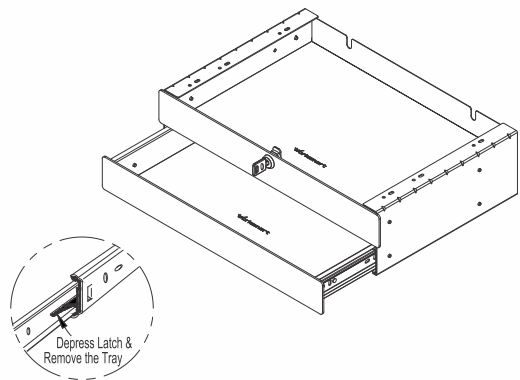
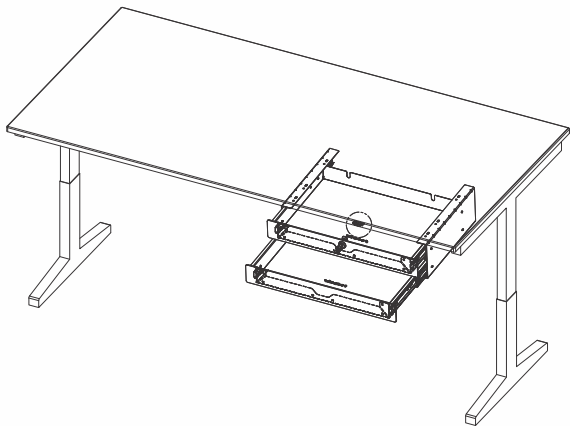
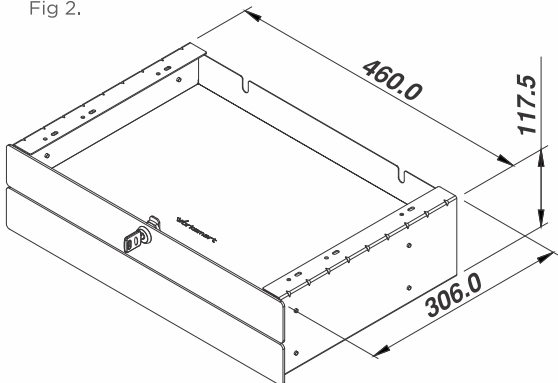


Fig 2.





LAPTOP STAND



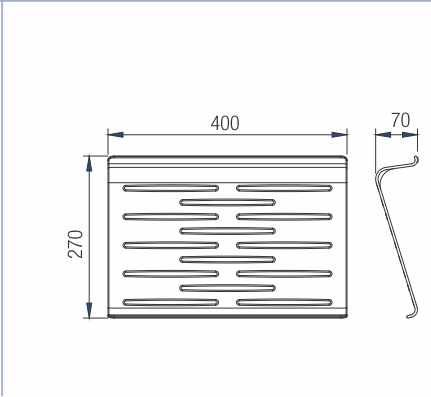
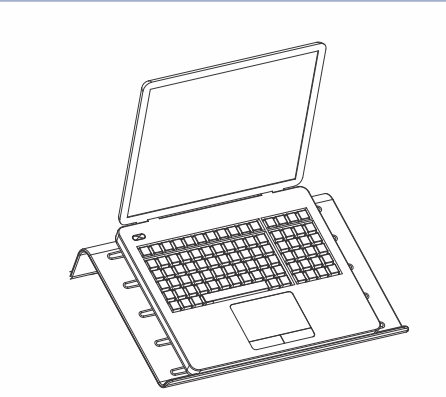
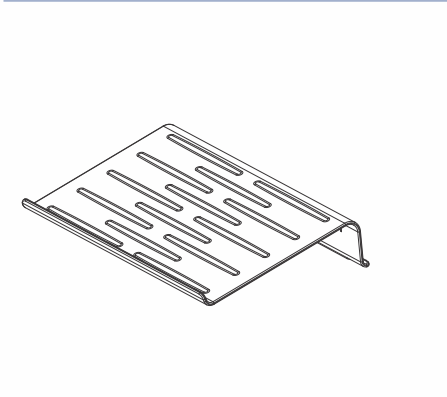
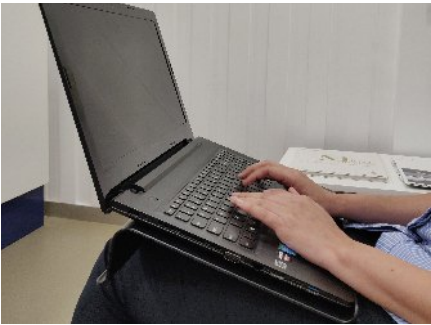
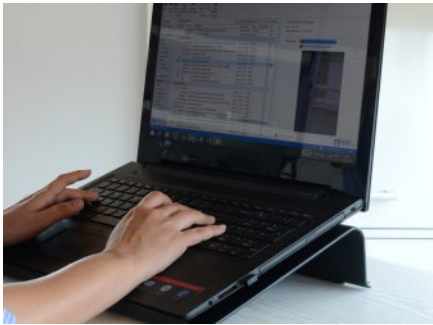
Special Features

- Ergonomic design laptop stand that can be used at home, offices, on a table, in the car, on a bed, while traveling and multiple scenarios.
- Lightweight and easy to carry around as per your convenience.
- Anti-skid pad provided to keep the laptop support firmly in place while working.
- Minimize the risk of modern health hazards such as Carpel Tunnel Syndrome (CTS). Repetitive Stress Injury(RSI)



Specifications

| Item | Code No. | Size | Finish |
|--------------|----------|----------------|--------|
| Laptop Stand | LTS-1 | 400 x 270 x 70 | AT |



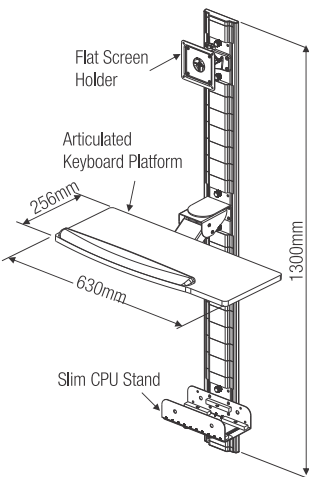


COMPUTER WALL STATION

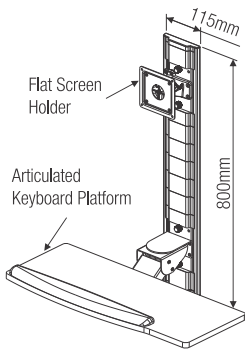


Special Features

- Modularly designed for all kinds of CPUs, Keyboards & Flat screens.
- Can be used in hospitals, offices, factories, restaurants, train and bus stations, airports, etc.
- Perfect work station where space is limited.
- Height can be adjusted for convenience.
- Vertical track made out of aluminium alloy.
- Available in different optional fittings.



Computer Wall Station



Computer Wall Station-Compact



Specifications

| Item | Code Nos. | Size in mm | Finish |
|--|-----------|------------|--------|
| Computer Wall Station | COMS-1 | 1300 | WM/AT |
| Computer Wall Station - Compact | COMS-2 | 800 | WM/AT |
| Tracks & Covers 1300 mm | COMS-TC13 | 1300 | WM/AT |
| Tracks & Covers 800 mm | COMS-TC08 | 800 | WM/AT |
| Flat Screen Holder (with mounting bracket) | COMS-FS1 | — | WM/AT |
| Flat Screen Holder - Extended Arm (with mounting bracket) | COMS-FS2 | — | WM/AT |
| Articulated K. B. Station Platform - Soft palm (with mounting bracket) | COMS-ASP | — | WM/AT |
| CPU - Slim (with mounting bracket) | COMS-CPU1 | 45- 95 | WM/AT |
| CPU - Regular (with mounting bracket) | COMS-CPU2 | 145 - 225 | WM/AT |

Fitting Instructions

1. Fix the vertical track to the wall using wall plug & screws provided as shown in Fig. 1
2. Fix the platform to the Articulated Station using screws provided as shown in Fig. 2.
3. Insert the end cap from bottom of the vertical track as shown in Fig. 3.
4. Slide in one 50mm cover from top to the vertical track as shown in Fig. 4.
5. Slide in the CPU stand slim from top of the vertical track as shown in Fig. 5. & tighten the locking knob. (While tightening the locking knob always ensure that the knob enter into the hole of the vertical track.)
6. Slide in two 37mm cover & multiples of 50mm cover to the Vertical Track to attain the desired height as shown in Fig. 6.
7. Slide in the Articulated Keyboard Station into the vertical track as shown in Fig. 7 & tighten the locking knob.
8. Repeat the procedure of Fig. 6.
9. Slide in the Flat Screen Holder into the vertical track as shown in Fig. 8. & tighten the locking knob.
10. Slide in one 50mm cover into the vertical track as shown in Fig. 9.
11. Insert the end cap from top of the vertical track as shown in Fig. 10.



COMPUTER WALL STATION

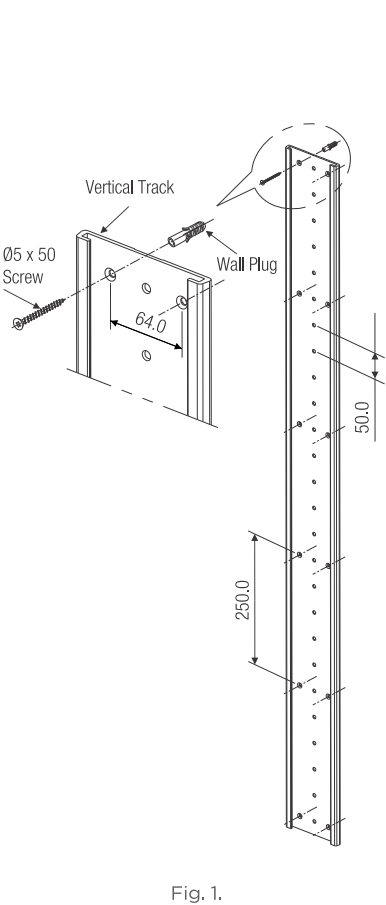


Fig. 1.

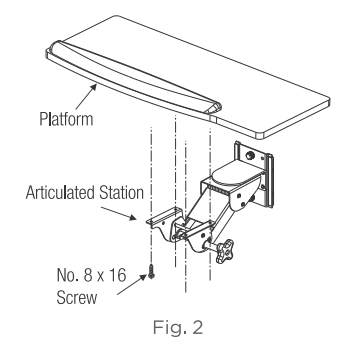


Fig. 2

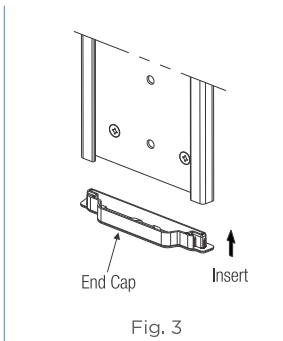


Fig. 3

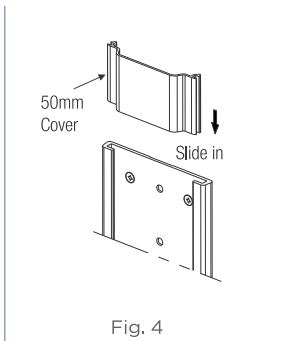


Fig. 4

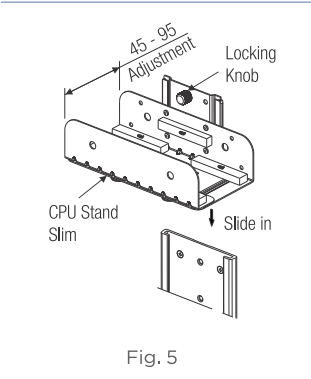


Fig. 5

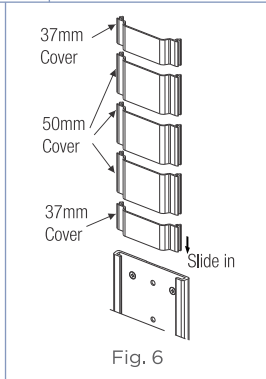


Fig. 6

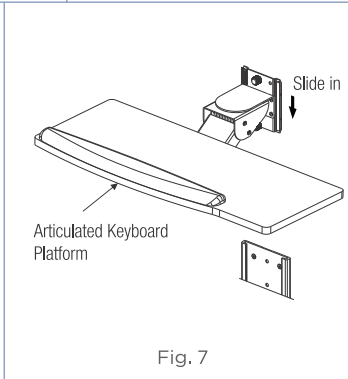


Fig. 7

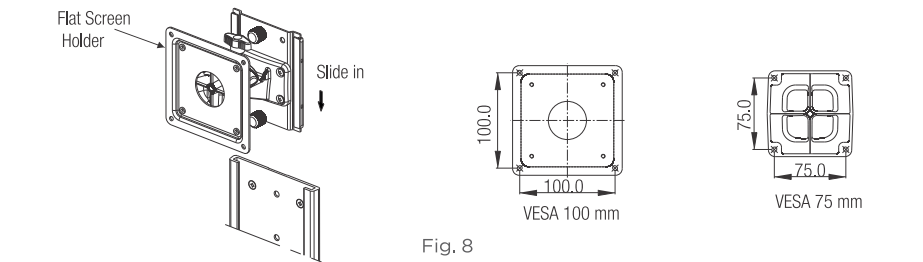


Fig. 8

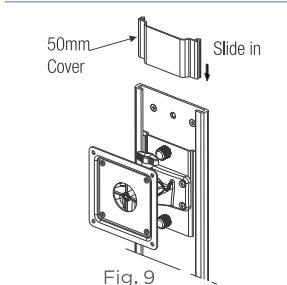


Fig. 9

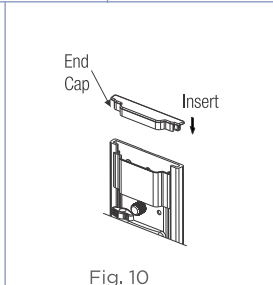
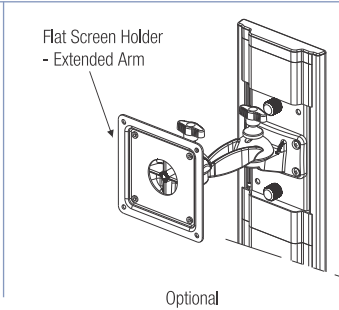
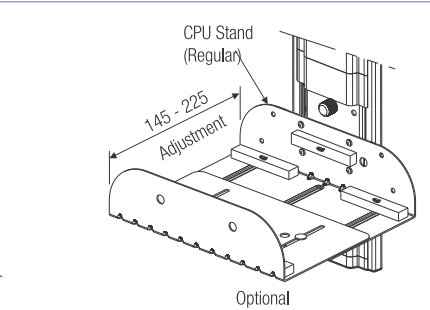


Fig. 10



Optional














Optional

COMS-1

| | | | | | | | | | | | |
|--------|---------|---------|---------|--------|--------|-------|--------|-------|-------|-------|--------|
| 1 No. | 12 Nos. | 12 Nos. | 15 Nos. | 4 Nos. | 2 Nos. | 1 No. | 4 Nos. | 1 No. | 1 No. | 1 No. | 4 Nos. |
| | | | | | | | | | | | |
| 1300mm | | | | | | | | | | | |

COMS-2

| | | | | | | | | | | |
|---|---|---|---|---|---|--|---|---|---|---|
| 1 No. | 8 Nos. | 8 Nos. | 9 Nos. | 2 Nos. | 2 Nos. | 1 No. | 4 Nos. | 1 No. | 1 No. | 4 Nos. |
|  |  |  |  |  |  |  |  |  |  |  |
| 1300mm | | | | | | | | | | |



ELECTRIC BOX - SLIDE OUT



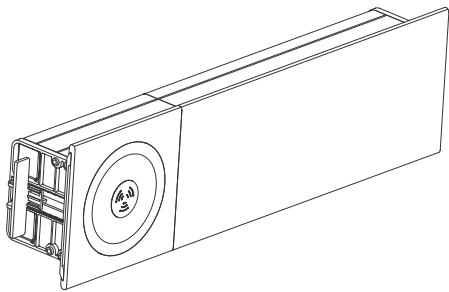
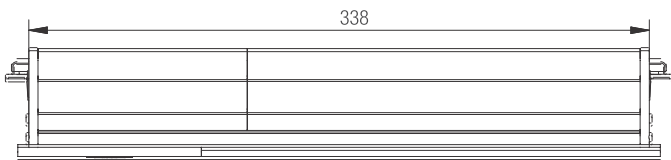
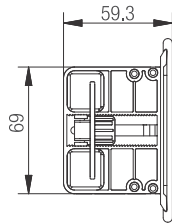
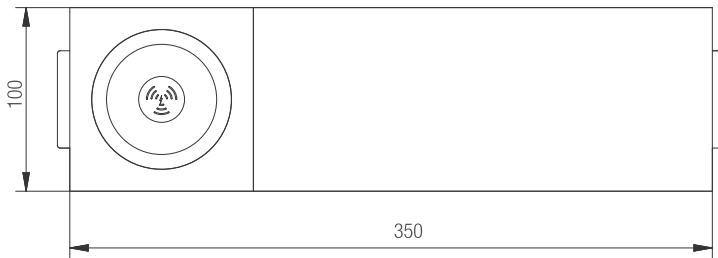
Special Features

- Compact and slim design electric box with sliding lid that hides sockets when not in use.
- The unit includes Wireless Charger, 2 Universal Power Sockets, 2 USB Charger Sockets, 1 Telephone and 1 Network Socket.
- In-built wireless charger for high end smart phones.
- This concealed electric box is ideal for any conference table, work desk or counter tops.
- Dimensions: 350x100x40mm.
- Desktop Cut-out Size:340x72mm.



Specifications

| Code No. | Finish |
|-----------|--------|
| EBS - SO1 | SL |





ELECTRIC BOX - CEILING MOUNT

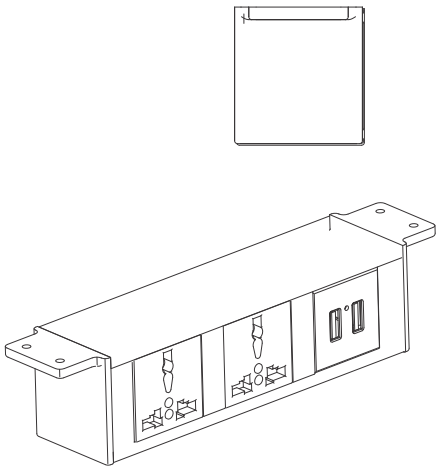
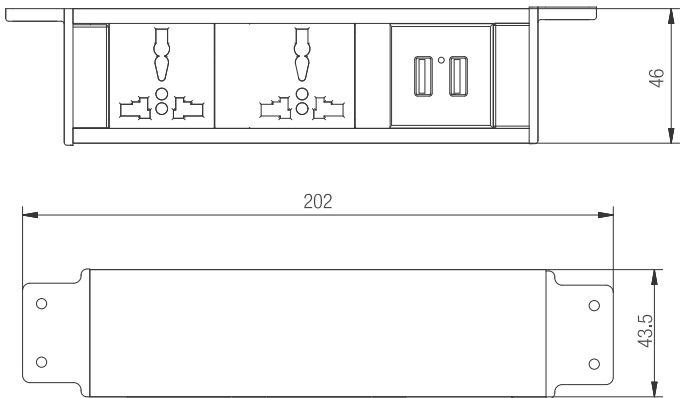
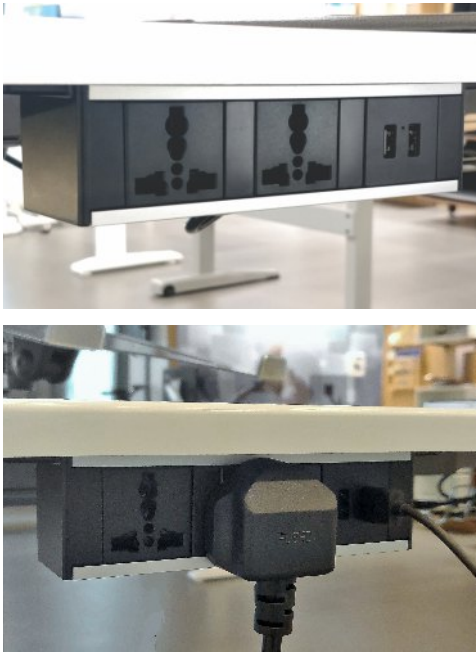


Special Features

- Ceiling Mount electric box can be mounted anywhere below the work desks as per your convenience.
- Clutter free desk as it is mounted below the table.
- The unit includes 2 Universal Power Sockets and 2 USB Charger Sockets.
- Ideal for any work desks, conference rooms etc.
- Dimensions: 162x43x46mm.

Specifications

| Code No. | Finish |
|----------|--------|
| EBS-CM1 | BL |





ELECTRIC BOX - EDGE MOUNT

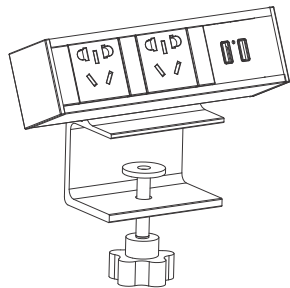
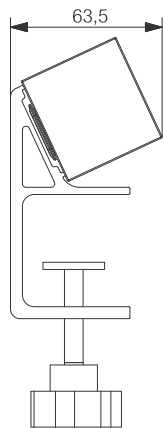
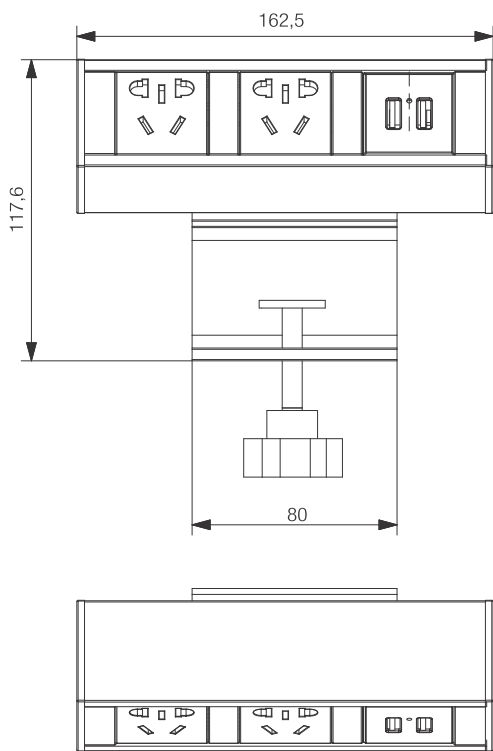
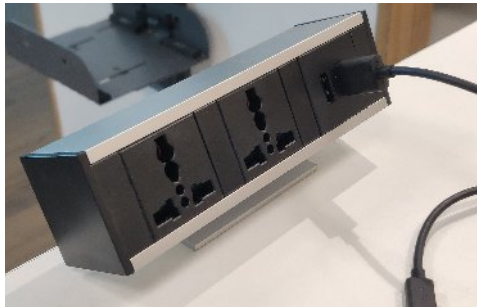


Special Features

- Easy edge mounting electric box is ideal for any work desk.
- Easy clamp on mounting makes it flexible to use on any table and mount anywhere you wish.
- The unit includes 2 Universal Power Sockets and 2 USB Charger Sockets.
- Dimensions: 162x43x46mm.

Specifications

| Code No. | Finish |
|-----------|--------|
| EBS - EM1 | BL |



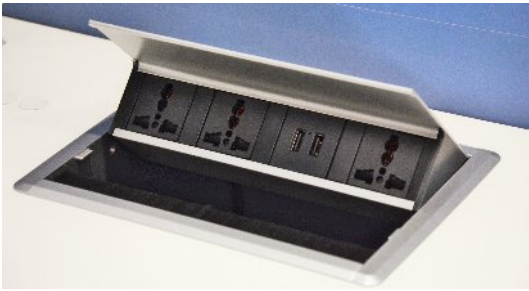


ELECTRIC BOX - FLIP UP



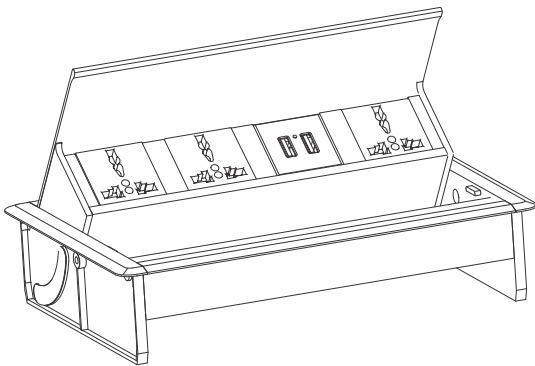
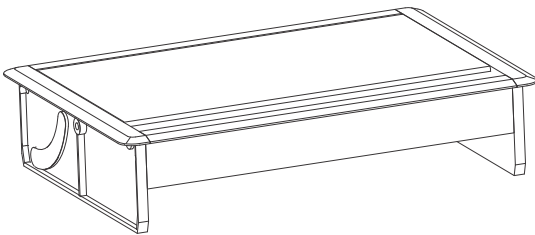
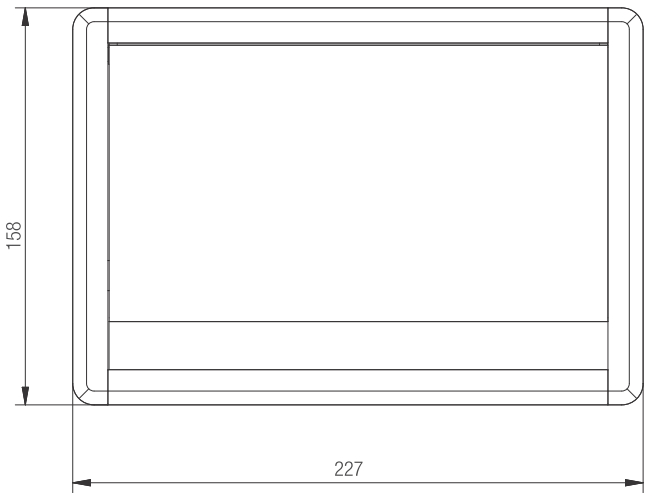
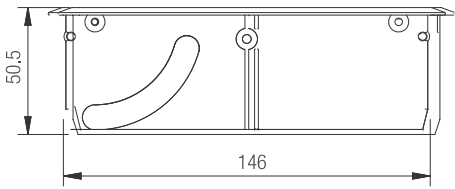
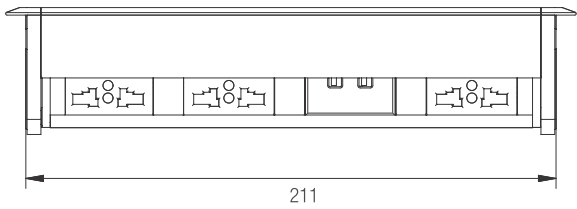
Special Features

- Unique design with flip up lid that hides sockets when not in use.
- Clutter free desk with no additional wires or cords attached.
- The unit includes 3 Universal Power Sockets and 2 USB Charger Sockets.
- Ideal for furniture in Offices, Meeting Rooms, Institutions etc.
- Dimensions: 228x158x50mm.
- Desktop Cut-out Size: 216x150mm.



Specifications

| Code No. | Finish |
|----------|--------|
| EBS-FU1 | SL |





WIRELESS CHARGER

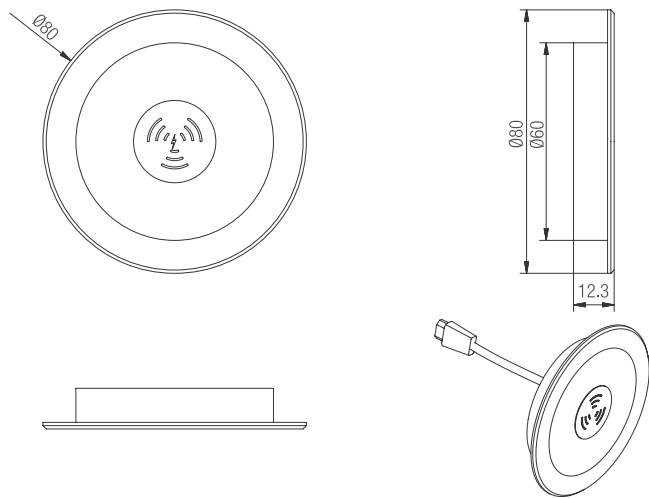


Special Features

- Elegant wireless charger for high end smart phones.
- Can be used with any Micro USB mobile charger.
- Easy to mount in a 60mm dia hole.
- Ideal for furniture in Offices, Meeting Rooms, Institutional & Home Application.
- Dimensions: 80x12mm.
- Desktop Cut-out Size :60mm.

Specifications

| Code No. | Finish |
|----------|--------|
| WLC1-WH | WH |



USB CHARGER WITH CABLE ORGANISER (Ø60)

Special Features

- Dual USB port charger that converts any work desk to a smart charging unit.
- Ideal for any work desk, which also functions as cable organiser.
- Physical Dimension : 66 x 20mm
- Cut-out Size: Ø60mm

Specifications

| Code No. | Finish |
|-----------|--------|
| USBC-CO60 | WH/BL |





USB CHARGER - FURNITURE MOUNT (CIRCULAR)



Special Features

- Dual USB port charger that converts any furniture to smart charging unit.
- Ideal for home and Office furniture.
- Size: Ø35 x 35mm
- Hole Ø32mm (Through Hole)
- USB Output: 5V/2.1A
- AC Adapter: INPUT: AC 100-240v 50/60Hz 0.35 MAX
OUTPUT: 5.0 V- 2.0A



Specifications

| | |
|----------|--------|
| Code No. | Finish |
| USBC-C1 | WH/BL |

x1
x1
x1

1 Drill a hole in the table / furniture/etc.

2 Plug the USB cable to the bottom of the USB charger.

3 Insert the product into the hole and feed the power plug through the plastic fastening nut.

4 Turn the plastic fastening nut as far up the thread as possible.

5 Connect the USB a port to the adapter.

6 Connect the adapter plug into the intended electrical socket.

2 USB charger (5V 2.0A)

One to USB charging One to adapter

1.5 meter cable



USB CHARGER - FURNITURE MOUNT (LINEAR)



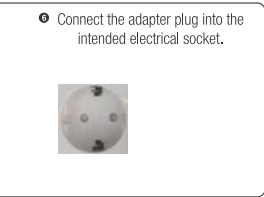
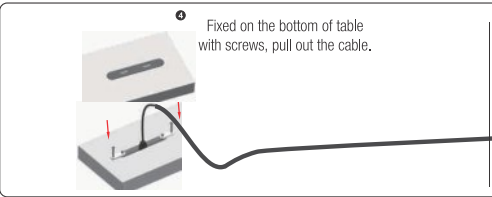
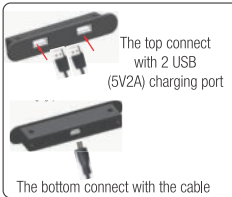
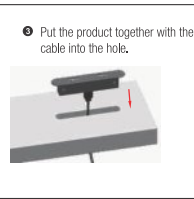
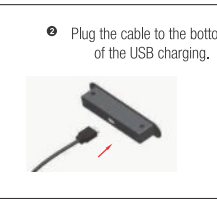
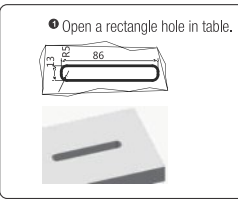
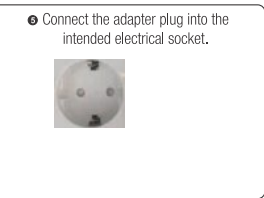
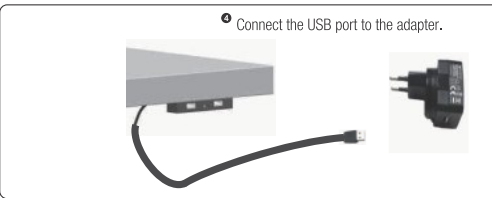
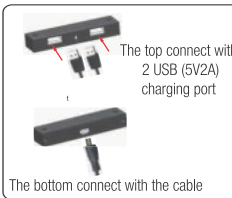
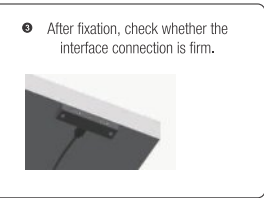
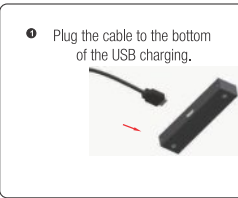
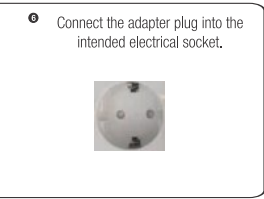
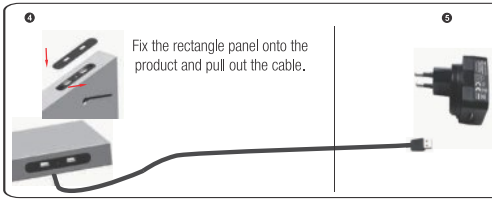
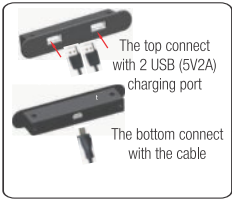
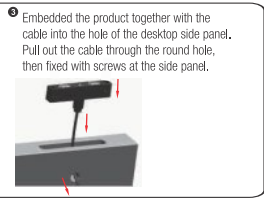
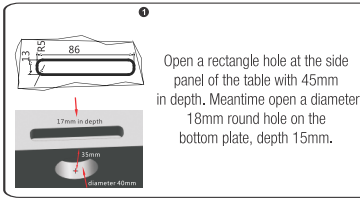
Special Features

- Dual USB port charger that converts any furniture to smart charging unit.
- Ideal for 18mm & 25mm table tops where it can be recessed on edge / top or mounted beneath the table
- Physical Dimension : Size: 80 x 12 x 17mm
- Cut-Out Size: 81 x 13mm
- USB Output: 5V/2.1A
- AC Adapter: INPUT: AC 100-240c 50/60 HZ 0.35 MAX
OUTPUT: 5.0 V- 2.0A



Specifications

| Code No. | Finish |
|----------|--------|
| USBC-L1 | WH/BL |





ELECTRIC BOX SLIM



Special Features

- Easy access to switches beneath the table.
- Sleek elegant design with built in Soft Close mechanism.
- Available in 6 different lengths.

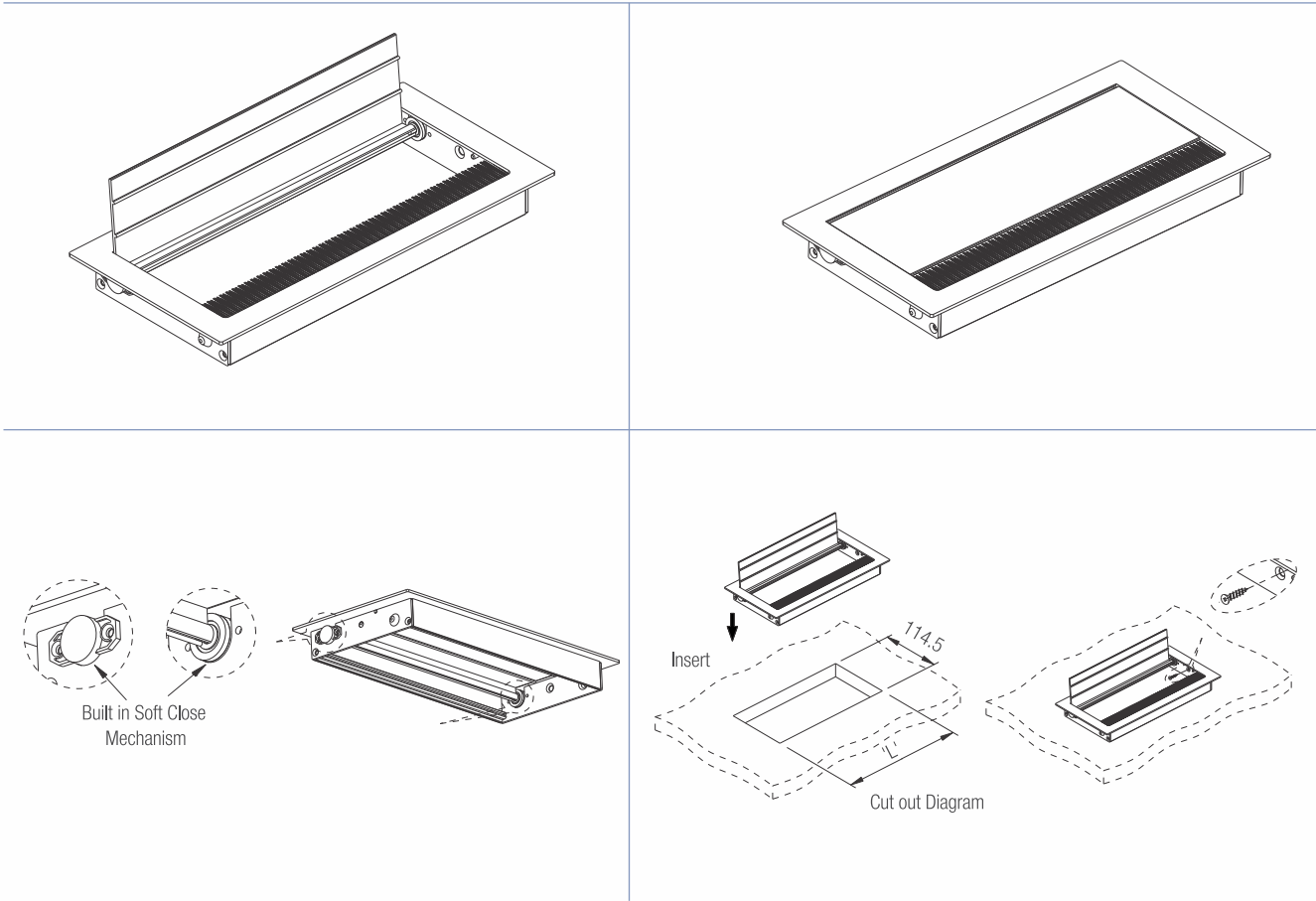


Specifications

| Item | Code Nos. | Size in mm | Finish | Code | Dimension 'L' |
|----------------------|-----------|----------------|--------------------|--------|---------------|
| Electric Box Slim 11 | EBS 11 | 132 x 132 x 27 | WM / AT / BL/SL | EBS 11 | 113.0 |
| Electric Box Slim 20 | EBS 20 | 220 x 132 x 27 | | EBS 20 | 201.0 |
| Electric Box Slim 25 | EBS 25 | 270 x 132 x 27 | | EBS 25 | 251.0 |
| Electric Box Slim 30 | EBS 30 | 320 x 132 x 27 | | EBS 30 | 301.0 |
| Electric Box Slim 35 | EBS 35 | 370 x 132 x 27 | | EBS 40 | 401.0 |
| Electric Box Slim 40 | EBS 40 | 470 x 132 x 27 | | EBS 45 | 451.0 |
| Electric Box Slim 45 | EBS 45 | 470 x 132 x 27 | | | |

Fitting Instructions

1. Follow the Steps given below.





ELECTRIC BOX SLIM - 2 & 3



Special Features

- Smart Electric box that gives access to switches beneath a desk / table.
- Has a built-in soft close mechanism which allows the lid to close silently.
- Slim 2 - 1. Made of plastic
 - 2. 3-way access
 - 3. Economic
- Slim 3 - 1. With aluminium lid & sides
 - 2. 2-way access with cable clip.

Specifications

| Item | Code Nos. | Size in mm | Finish |
|---------------------|-----------|--------------------------------------|--------|
| Electric Box Slim 2 | EBS2-30 | 300 x 120x 25 (Cut out 290 x 111) | WT |
| | EBS3-30 | 300 x 120x 25 (Cut out 290 x 111) | |
| Electric Box Slim 3 | EBS3-45 | 450 x 120 x25 (Cut Out 445 x 111) | |



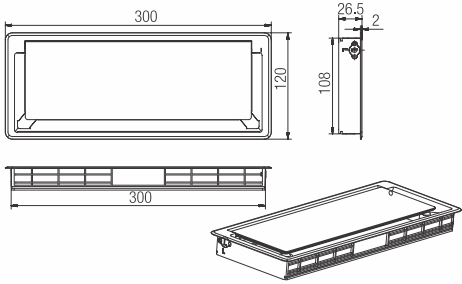
Slim 2



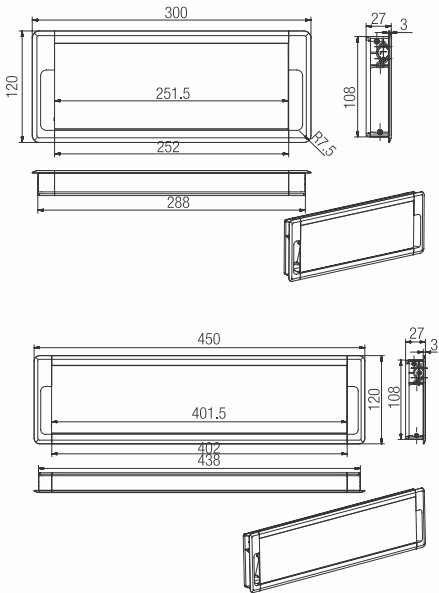
Slim 3



Slim 2



Slim 3





WORK STATION TRAY (ROUND) Design Reg. Pending



Special Features

- Ideal for working or study table.
- Aesthetically designed with both, utility and end user in mind.
- No drawers required as the tray is directly mounted underneath the table.
- Ideal for storing staplers, erasers, pens, pencils, pins, clips or 2 x 3 post it notes.
- 360° rotation for easy accessibility & special catch at 180° for fully closed & open position.
- Manufactured out of durable plastics for strength and long life.
- System 32 compatible.

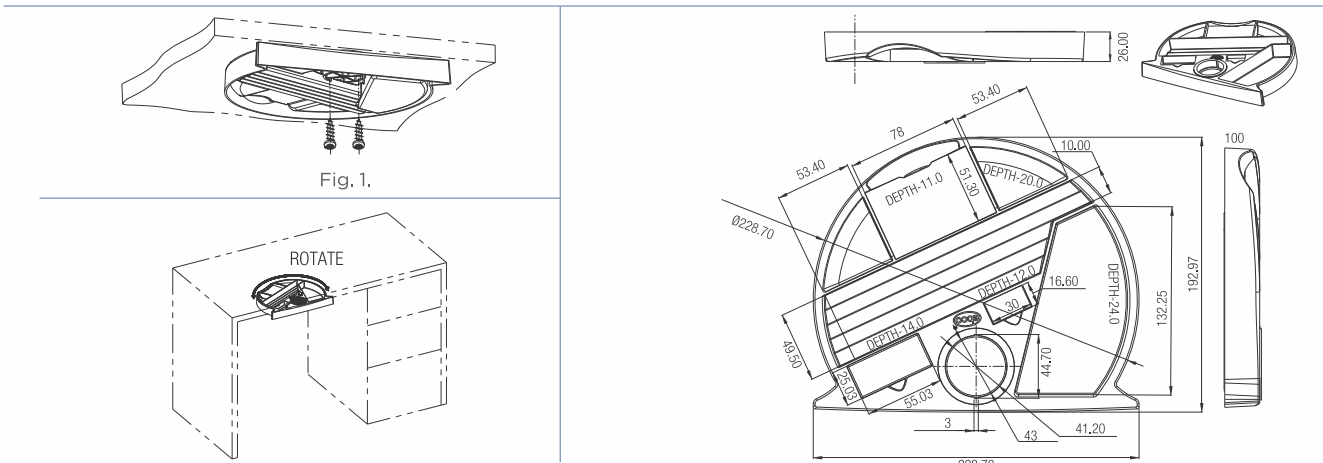


Specifications

| Code No. | Size in mm | Finish |
|----------|------------|---------------|
| WSTR-9 | Ø220 | Black & Ivory |

Fitting Instructions

1. Align the tray to the front most edge of the table & fix it with the screws provided on to the tables as shown in Fig.1.



WORK STATION TRAY

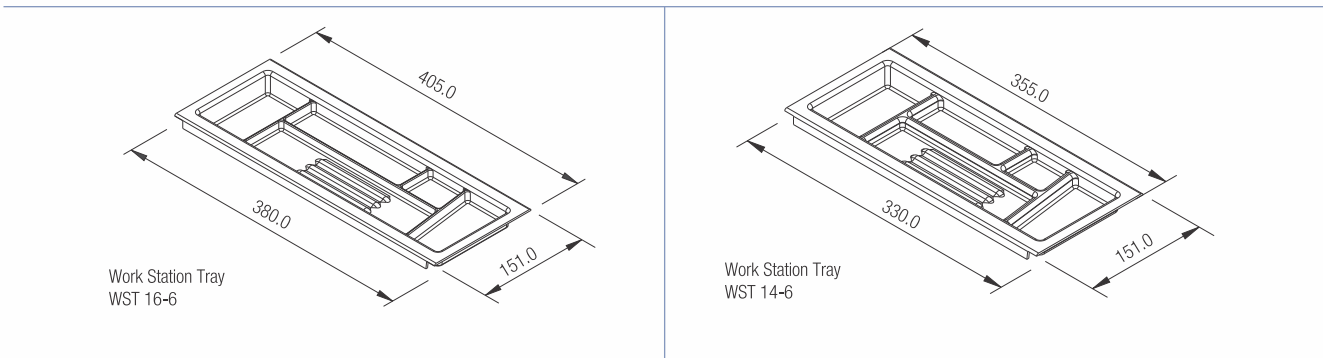
Special Features

- Aesthetically designed with both, utility and end user in mind.
- Tray fits perfectly on the top edge of a drawer in any work station.
- Manufactured out of A.B.S. for strength and long life.
- Smaller tray economy model available.



Specifications

| Code Nos. | Size in mm | Finish |
|-----------|------------|--------|
| WST 16-6 | 405 x 151 | Black |
| WST 14-6 | 355 x 151 | |





MODESTY PANEL CLAMP



Special Features

- Aesthetically designed.
- Provides below work surface modesty for wood / Toughened glass.
- Can be used for thickness between 8mm to 16mm.

Specifications

| Code Nos. | Finish |
|-----------|--------|
| MPC1 2 WT | WT |
| MPC1 2 CP | CP |

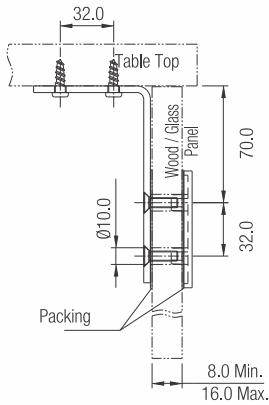
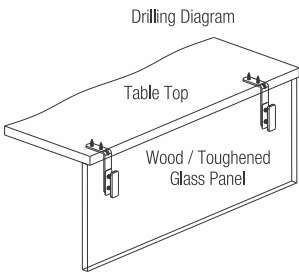
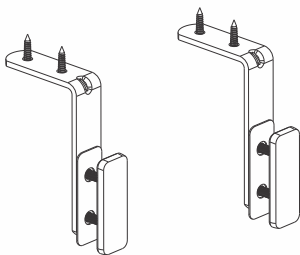
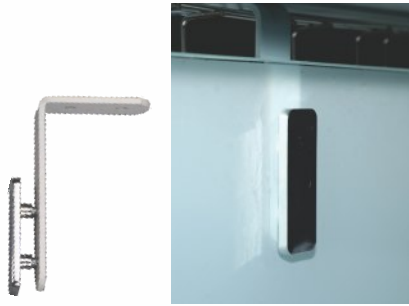


TABLE PARTITION CLAMP - SLIM

Special Features

- Designed with aesthetic slim look.
- Can be used for wood as well as glass partitions.
- Side screws provided for better grip to the partition.
- Can be used for thickness between 4mm to 20mm.
- Special Plastic Pads provided for better grip & protection.
- For table top installation.

Specifications

| Code Nos. | Partition Thickness | Finish |
|-----------|---------------------|-------------|
| TPCS-8 | 4mm to 12mm | WT/SL/AT/BL |
| TPCS-16 | 12mm to 20mm | |



Fitting Instructions

1. Follow the steps given below.

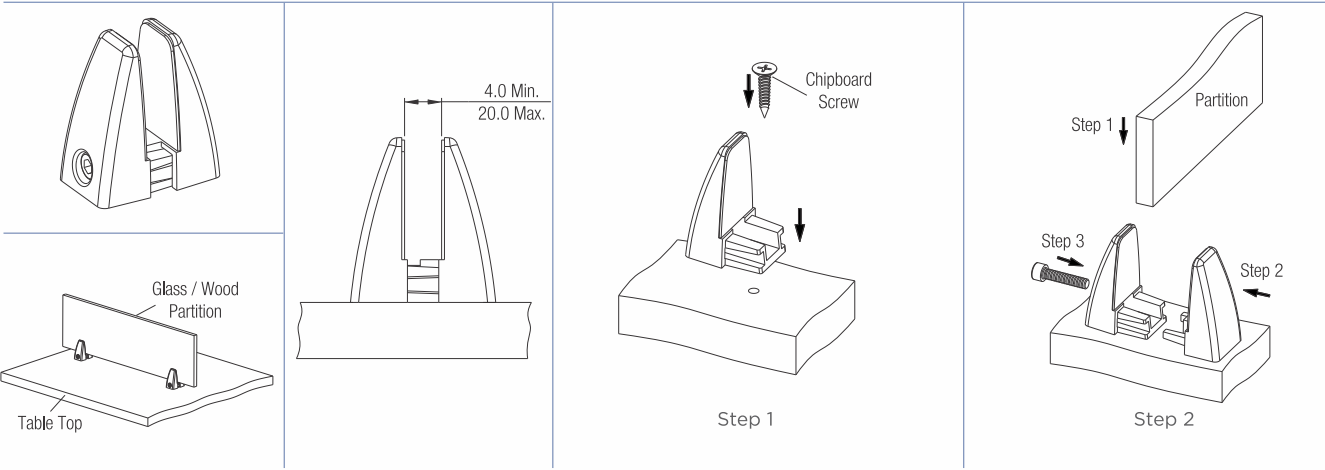




TABLE PARTITION CLAMP - TOP MOUNT



Special Features

- Ideal to use for wood as well as glass partitions.
- Can be used for thickness between 6mm to 20mm.
- Side screws and Special Plastic Pads provided for better grip & glass protection.



Specifications

| Code No. | Partition Thickness | Finish |
|----------|---------------------|---------|
| TPC2-620 | 6mm to 20mm | WM / SL |

Fitting Instructions

1. Follow the steps given below.

Table Top

Step 1

Screw

Step 2

Partition

Step 3

Glass / Wood Partition

Table Top

TABLE PARTITION CLAMP - EDGE MOUNT

Special Features

- Suitable for table top edge installation.
- Can be used for wood as well as glass partitions for thickness between 6mm to 20mm.
- For firm support and glass protection, side screws & special plastic pads are provided.



Specifications

| Code No. | Partition Thickness | Finish |
|------------|---------------------|---------|
| TPC2-620EM | 6mm to 20mm | WM / SL |

Fitting Instructions

1. Follow the steps given below.

Leading Edge of Table Top

Step 1

Step 2

Partition

Step 3

Glass / Wood Partition

Table Top Edge



VERTEBRAE (OVAL)

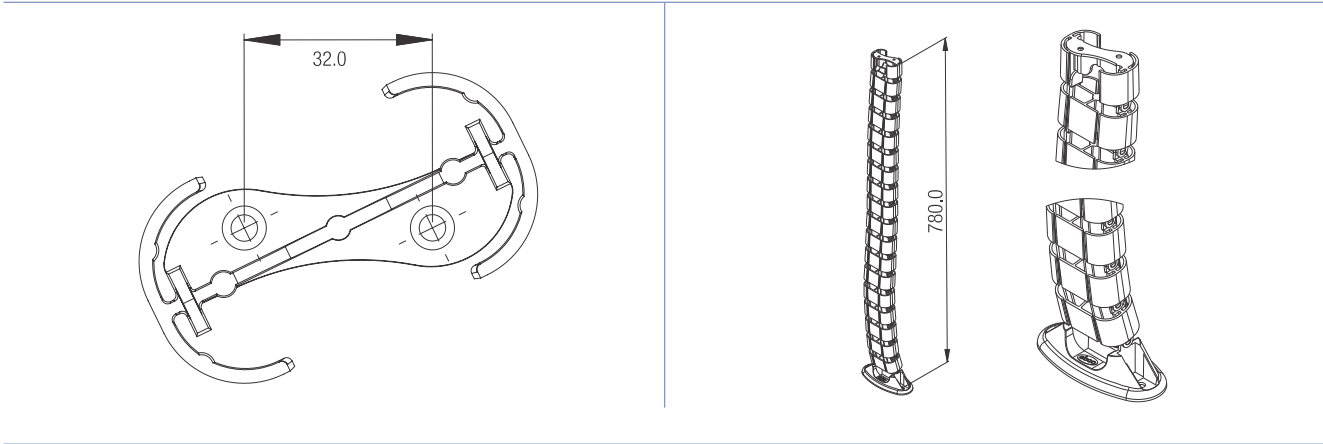


Special Features

- Ideal for concealing electrical and data cables separately at a work station in an organized way.
- Enhances the look of furniture.
- Manufactured out of plastic and is flexible.

Specifications

| Code No. | Finish |
|----------|--------------|
| VO 2 | WH / GR / BL |



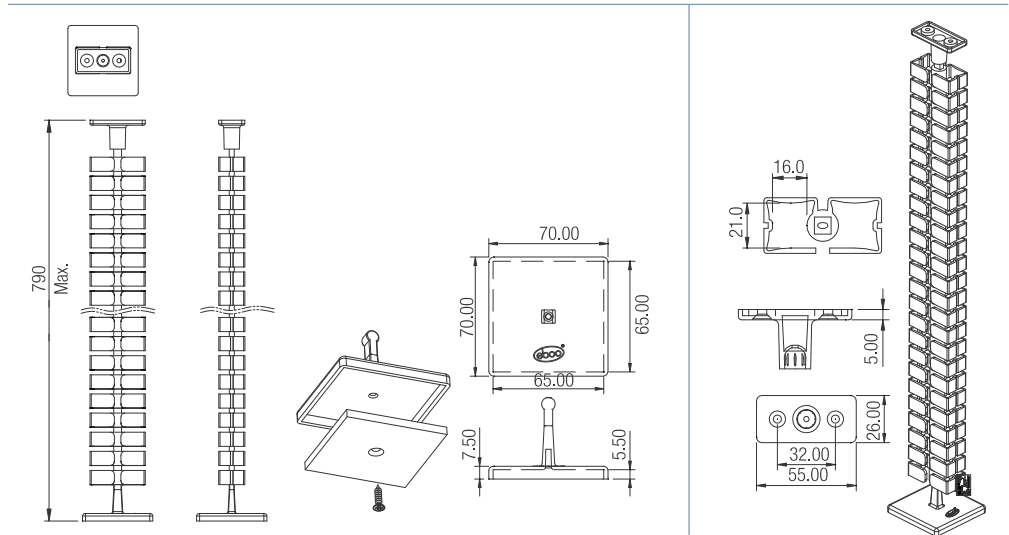
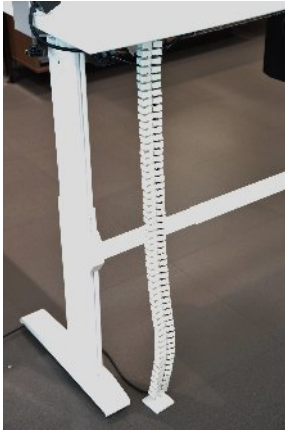
VERTEBRAE (RECTANGULAR)

Special Features

- Ideal for concealing electrical & data cables separately at a work station in an organised way.
- Enhances the look of furniture.
- Manufactured out of plastic & is flexible.
- System 32 compatible.
- Built in counter weight at base.

Specifications

| Code No. | Finish |
|----------|----------|
| VR - 2 | WH/GR/BL |





CABLE TRAY - FIXED



Special Features

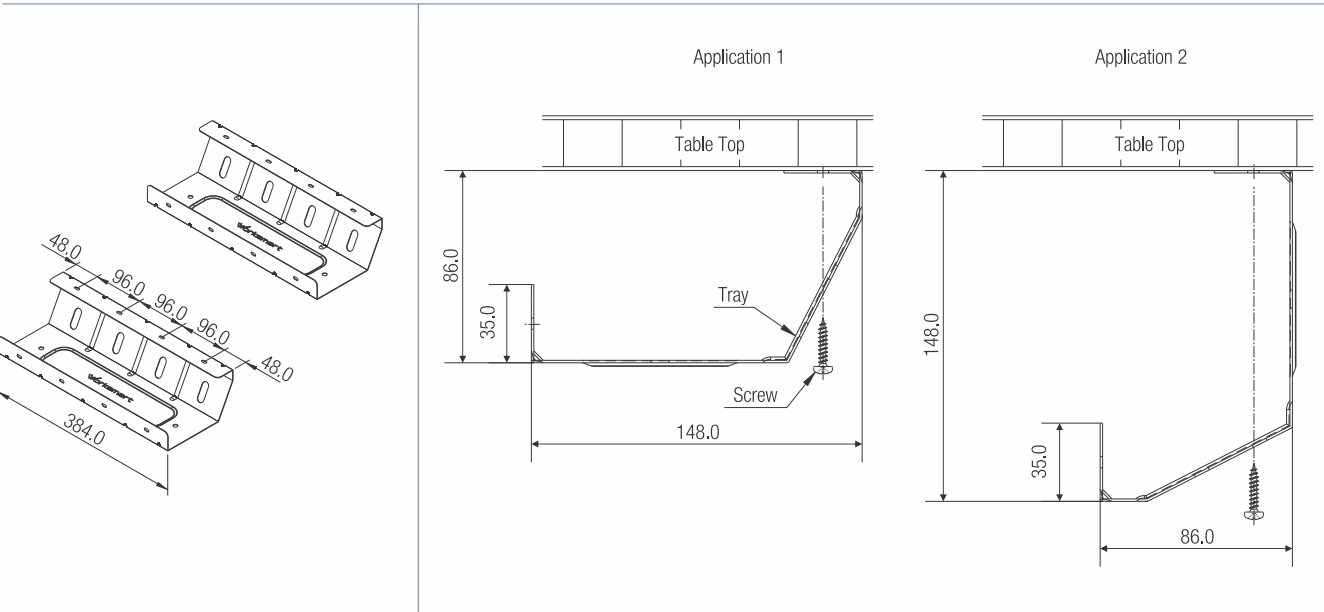
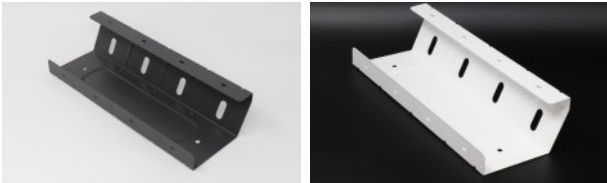
- Simple and elegant in appearance.
- Ideal for cable management underneath the table.
- Protects cables and users.
- Easy to fit.
- System 32 compatible.

Specifications

| Code No. | Size | Finish |
|----------|------|--------|
| CTF-1 | 384 | PC |

Fitting Instructions

1. Fit the Tray under the table as shown in application drawing.



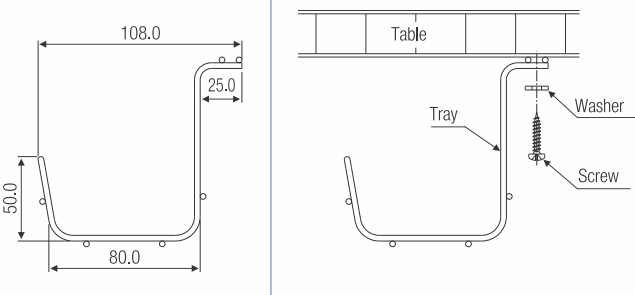
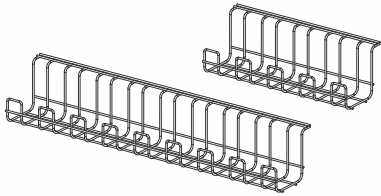
CABLE TRAY

Special Features

- Simple and elegant in appearance.
- Ideal for cables underneath the table.
- Protects cables and users.
- Manufactured out of stainless steel.
- Available in two sizes.

Specifications

| Code Nos. | Size | Finish |
|-----------|--------|--------|
| CT 30 | 300 mm | SS |
| CT 50 | 500 mm | SS |





CABLE ORGANIZER



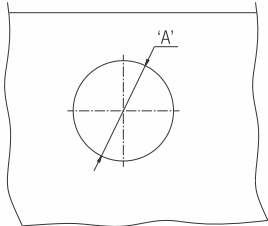
Special Features

- Unique design with 3 port selection to suit different number of cables.
- Manufactured out of plastic.



Specifications

| Item | Code Nos. | Drilling Dia. 'A' mm | Finish |
|------------------------|-----------|-------------------------|--------------|
| Cable Organizer Ø60 | CO 60 | 60 | BL / WH / GR |



Drilling Diagram

CABLE MANAGER Ø20 AND Ø40

Special Features

- Ideal for managing cables underneath the table.
- Protects users from coming in direct contact with the cables.
- Easy stick on installation and screw mounting provision.
- Available in two sizes: Ø20 and Ø40 in length of 500mm.



Specifications

| Code Nos. | Size in mm | Finish |
|-----------|------------|--------|
| CM 4050 | 500 x Ø40 | White |
| CM 2050 | 500 x Ø20 | White |

FOOT REST

Special Features

- Designed to keep your feet supported and comfortable keeping the blood circulation regular.
- It can help to prevent varicose veins and pressure on the Achilles tendon which are caused for being seated for long hours.
- Made of high impact polystyrene.
- Tilts (0°-20°) to provide the most comfortable angle.
- Large platform: 450 X 350 mm.
- Non-slip surface enhances overall stability.



Specifications

| Code No. | Size | Finish |
|----------|-----------|--------|
| FR 2 | 450 x 350 | BL |