

ESmart Digital Lock - Cabinet 4P - Numeric Code: ESDL-C4P-N

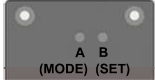
PANEL INTRODUCTION



TOUCH PANEL INTRODUCTION

- DIGITS:** Enter the password
- LOGO SIGN:** To activate and confirm
- BATTERY SIGN:** Low voltage alarm

BUTTON INTRODUCTION



- A/MODE:** Mode switch button (Private mode/public mode)
 - B/RESET:** Reset button (Default management code: 123456, user code: 1234)
- **Reset to default is only available in private mode.**

MODE INTRODUCTION

- PUBLIC MODE/ ONE-TIME USE ("BEEP" SOUND):** Enter the password to lock/unlock the door.
- PRIVATE MODE ("BEEP BEEP" SOUND):** Auto-lock after 6 seconds entering the password to unlock. Also, it's available to press the logo sign and lock the door instantly.

CODE MODE

- MANAGEMENT CODE (6-DIGIT)** Once the management code is entered to unlock, the user code will become default.
- USER CODE (4-DIGIT):** Unlock/lock the door/ change the user code.

LOW VOLTAGE ALARM

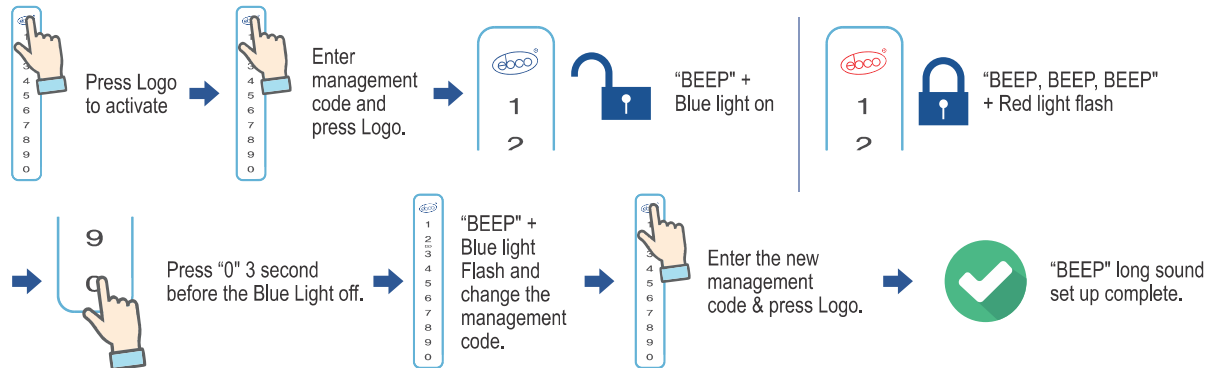
- When the battery sign light flash with alarm sound, it means the lock is in low power status. Please change the new batteries right away.
- Type-C external power charge for emergency use is available.

WARNING

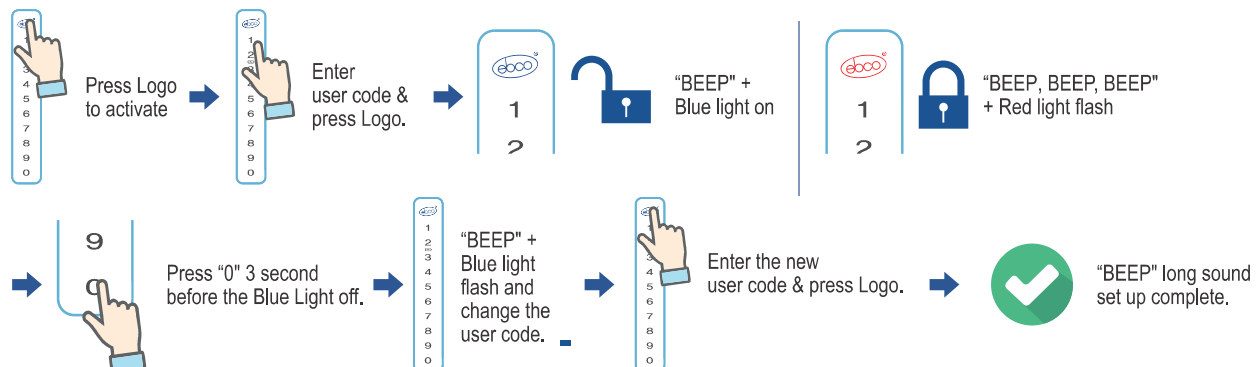
- PLEASE TEST LOCK IF IT CAN WORK BEFORE CLOSING THE DOOR.
- PLEASE USE NEW AAA ALKALINE BATTERY.
- VOLTAGE INPUT CANNOT BE OVER THAN 6V.

USER INSTRUCTION

CHANGE MANAGEMENT CODE (6-DIGIT)

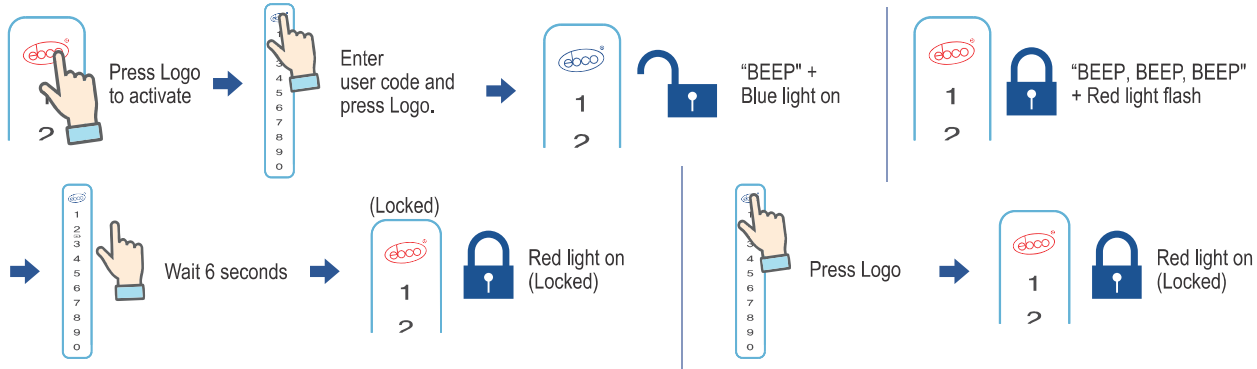


CHANGE USER CODE (4-DIGIT)

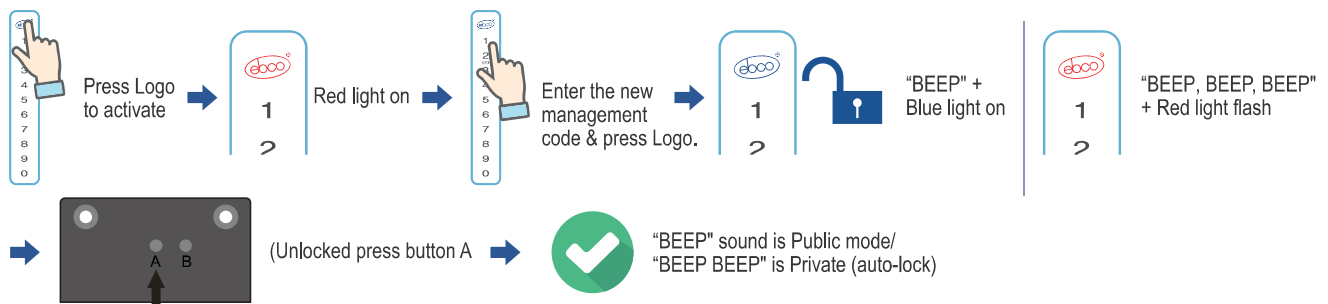


USER INSTRUCTION

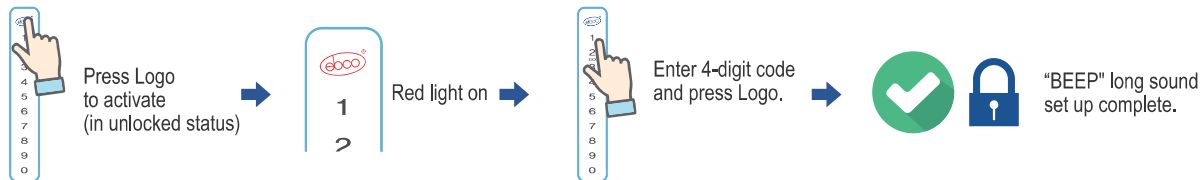
LOCK/UNLOCK (PRIVATE MODE)



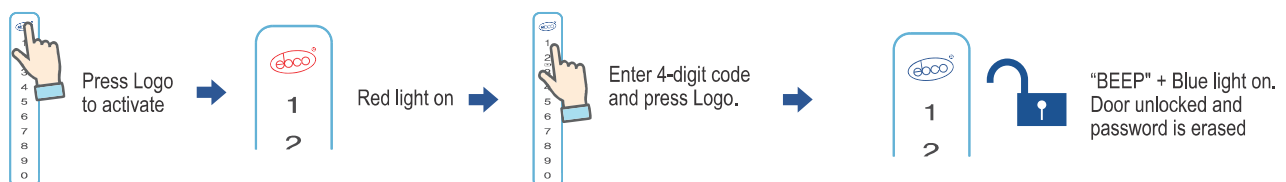
PRIVATE / PUBLIC MODE SWITCHING



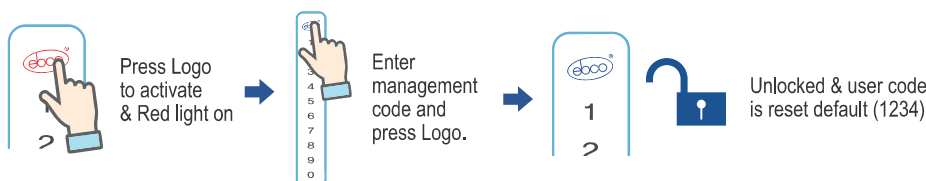
ONE-TIME USE (PUBLIC MODE)



ONE-TIME USE (PUBLIC MODE) : UNLOCK



UNLOCK BY MANAGEMENT CODE (PUBLIC MODE)



RESET DEFAULT

